

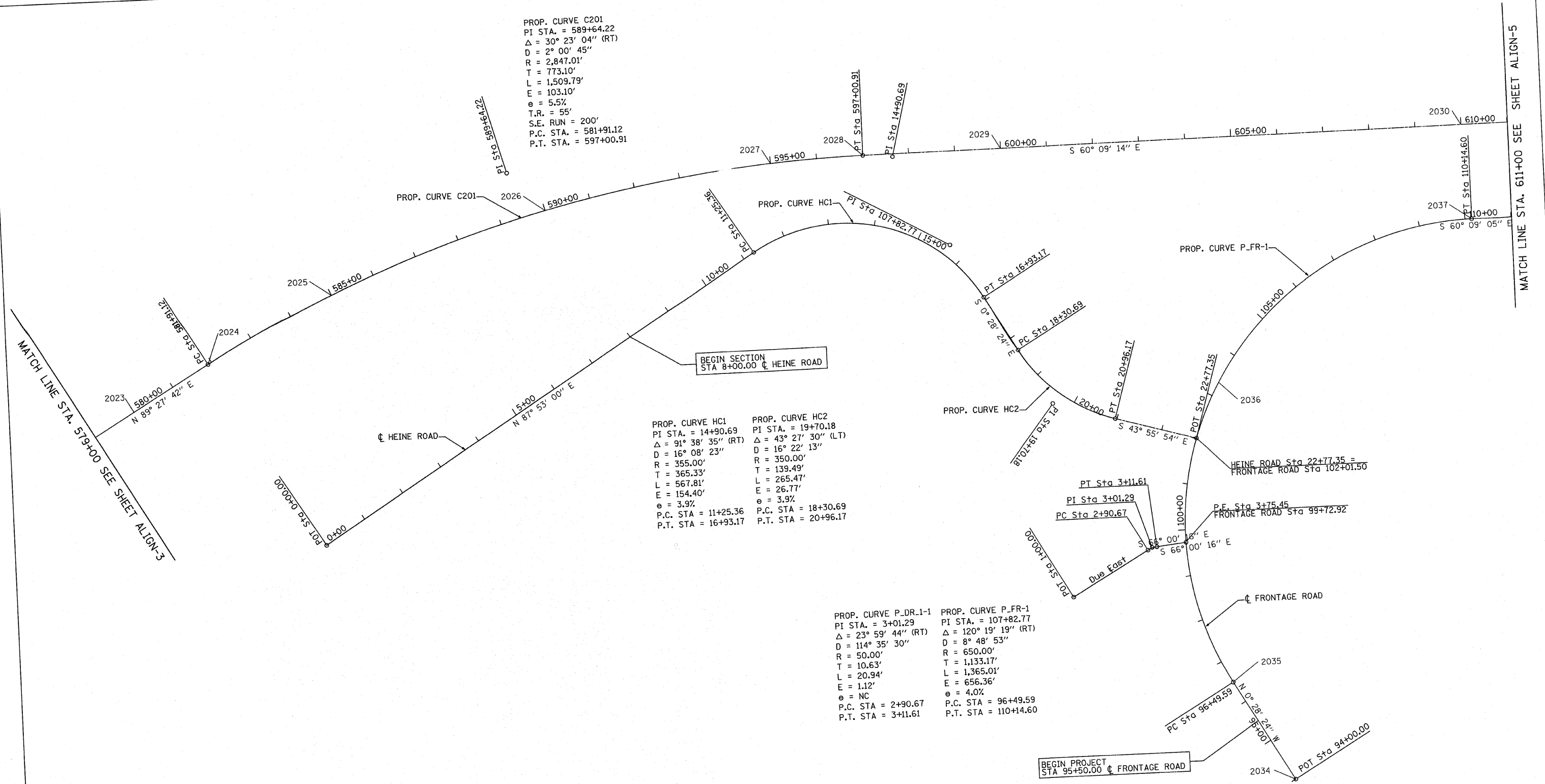
PROP. CURVE C201
 PI STA. = 589+64.22
 $\Delta = 30^\circ 23' 04''$ (RT)
 $D = 2^\circ 00' 45''$
 $R = 2,847.01'$
 $T = 773.10'$
 $L = 1,509.79'$
 $E = 103.10'$
 $e = 5.5\%$
 $T.R. = 55'$
 $S.E. RUN = 200'$
 $P.C. STA. = 581+91.12$
 $P.T. STA. = 597+00.91$

PROP. CURVE HC1
 PI STA. = 14+90.69
 $\Delta = 91^\circ 38' 35''$ (RT)
 $D = 16^\circ 08' 23''$
 $R = 355.00'$
 $T = 365.33'$
 $L = 567.81'$
 $E = 154.40'$
 $e = 3.9\%$
 $P.C. STA = 11+25.36$
 $P.T. STA = 16+93.17$

PROP. CURVE HC2
 PI STA. = 19+70.18
 $\Delta = 43^\circ 27' 30''$ (LT)
 $D = 16^\circ 22' 13''$
 $R = 350.00'$
 $T = 139.49'$
 $L = 265.47'$
 $E = 26.77'$
 $e = 3.9\%$
 $P.C. STA = 18+30.69$
 $P.T. STA = 20+96.17$

PROP. CURVE P_DR-1-1
 PI STA. = 3+01.29
 $\Delta = 23^\circ 59' 44''$ (RT)
 $D = 114^\circ 35' 30''$
 $R = 50.00'$
 $T = 10.63'$
 $L = 20.94'$
 $E = 1.12'$
 $e = NC$
 $P.C. STA = 2+90.67$
 $P.T. STA = 3+11.61$

PROP. CURVE P_FR-1
 PI STA. = 107+82.77
 $\Delta = 120^\circ 19' 19''$ (RT)
 $D = 8^\circ 48' 53''$
 $R = 650.00'$
 $T = 1,133.17'$
 $L = 1,365.01'$
 $E = 656.36'$
 $e = 4.0\%$
 $P.C. STA = 96+49.59$
 $P.T. STA = 110+14.60$



MATCH LINE STA. 579+00 SEE SHEET ALIGN-3

MATCH LINE STA. 611+00 SEE SHEET ALIGN-5

REVISIONS	
NAME	DATE

ILLINOIS DEPARTMENT OF TRANSPORTATION
 F.A.P. ROUTE 301 (US RTE. 20)
 FROM BOLTON ROAD TO WEST OF IL RTE. 26
 ALIGNMENT, TIES AND
 BENCHMARKS



SCALE: 1"=100'
 DATE: 01-22-10
 DRAWN BY RMH
 CHECKED BY DVS