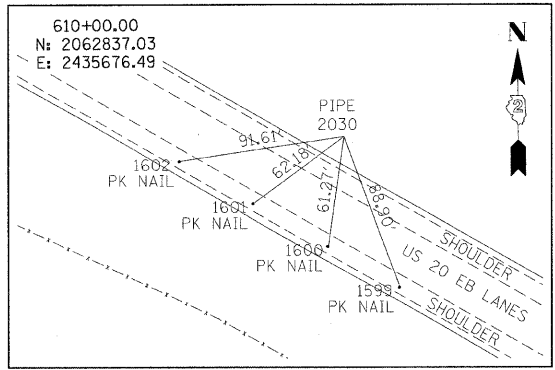
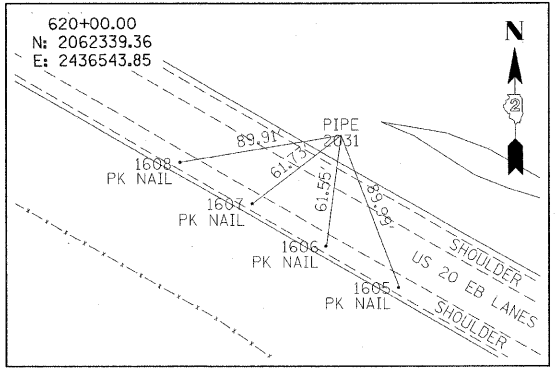


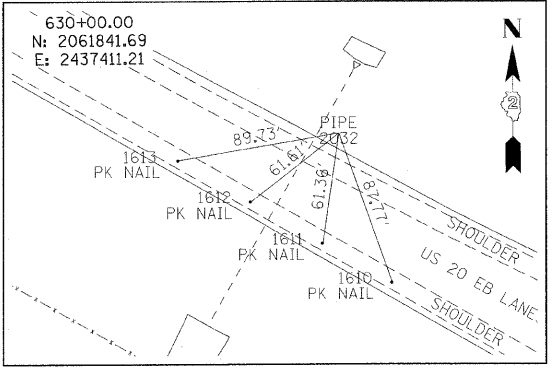
F.A.P. RTE.	SECTION	COUNTY	TOTAL SHEETS	SHEET NO.
301	177-2 (-1A, B-1, VB-1)	STEPHENSON	386	47
STA.		TO STA.		
FED. ROAD DIST. NO.		ILLINOIS FED. AID PROJECT		
P-92-029-02		CONTRACT #64799		



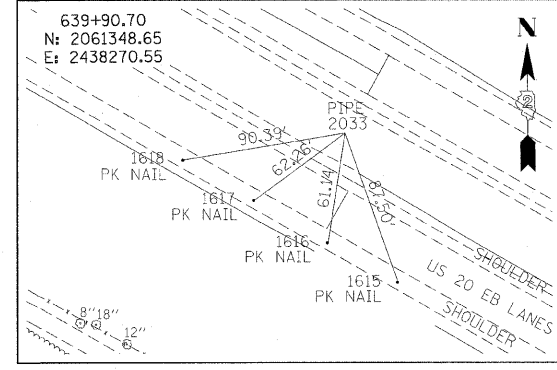
MAINLINE 610+00.00



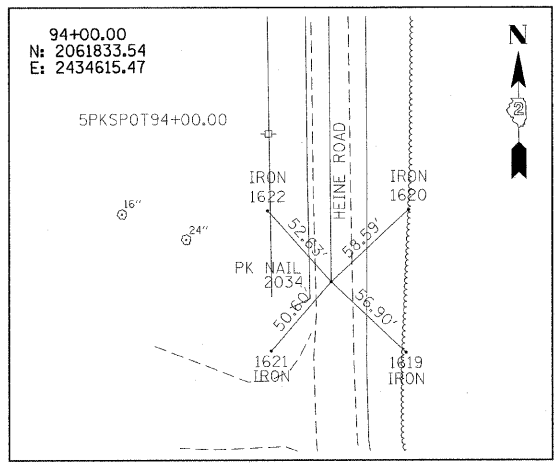
MAINLINE 620+00.00



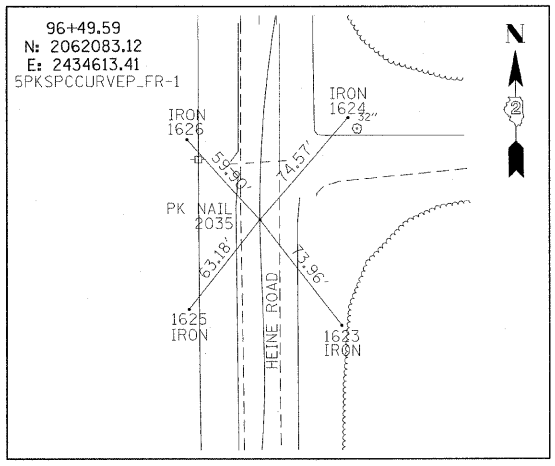
MAINLINE 630+00.00



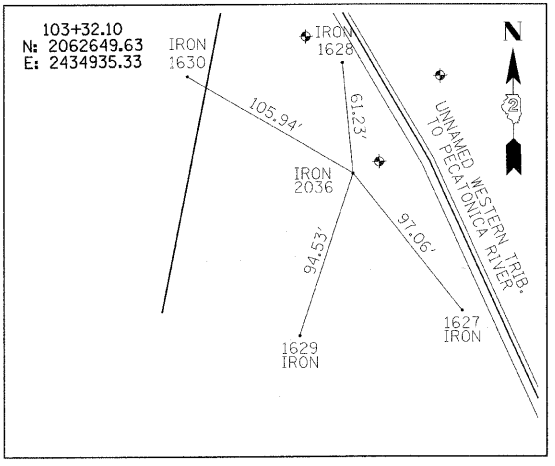
MAINLINE 639+90.70



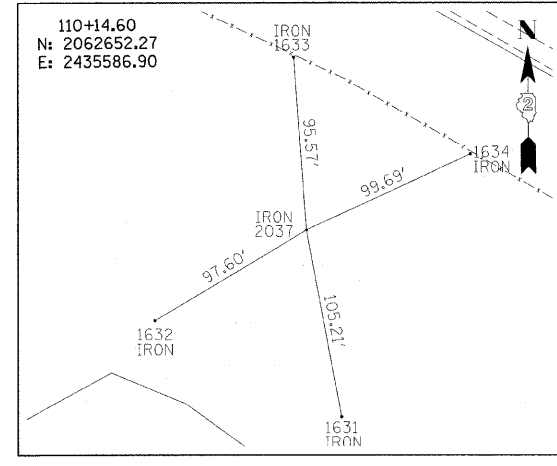
FRONTAGE ROAD 94+00.00



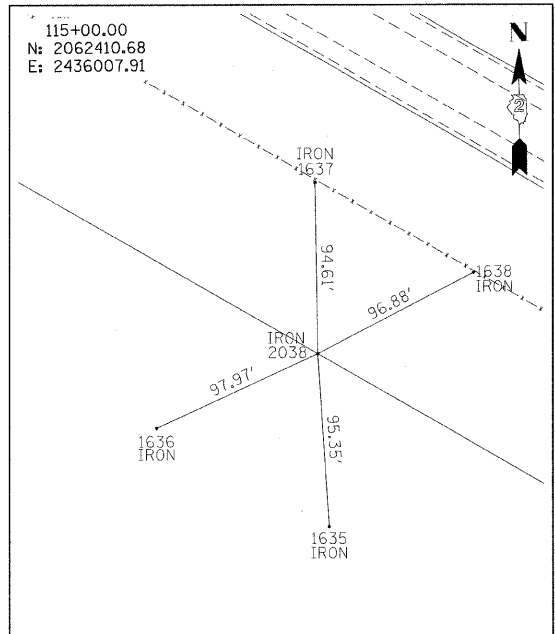
FRONTAGE ROAD 96+49.59



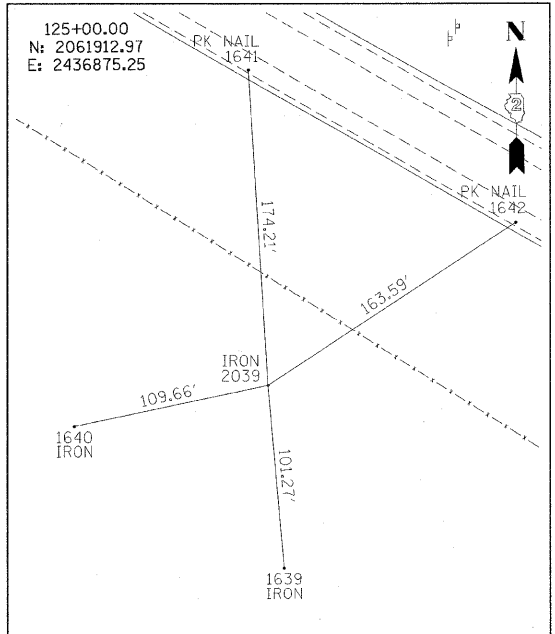
FRONTAGE ROAD 103+32.10



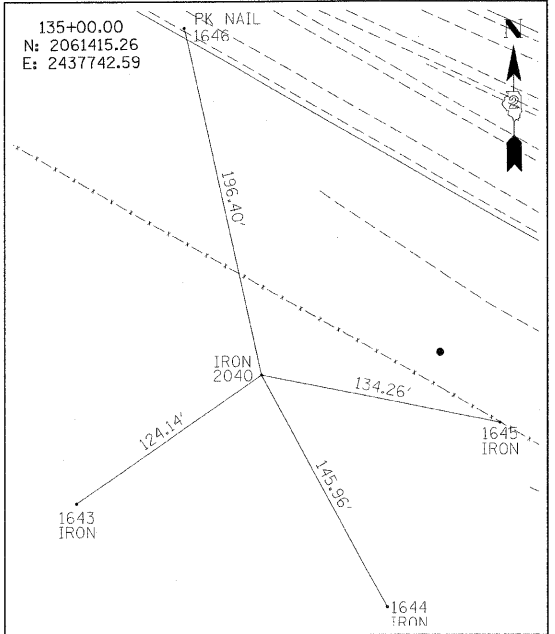
FRONTAGE ROAD 110+14.60



FRONTAGE ROAD 115+00.00



FRONTAGE ROAD 125+00.00



FRONTAGE ROAD 135+00.00

REVISIONS	
NAME	DATE

ILLINOIS DEPARTMENT OF TRANSPORTATION  
 F.A.P. ROUTE 301 (US RTE. 20)  
 FROM BOLTON ROAD TO WEST OF IL RTE. 26  
 ALIGNMENT, TIES  
 AND BENCHMARKS

SCALE: DATE: 01-22-10  
 DRAWN BY SJV  
 CHECKED BY RMH

