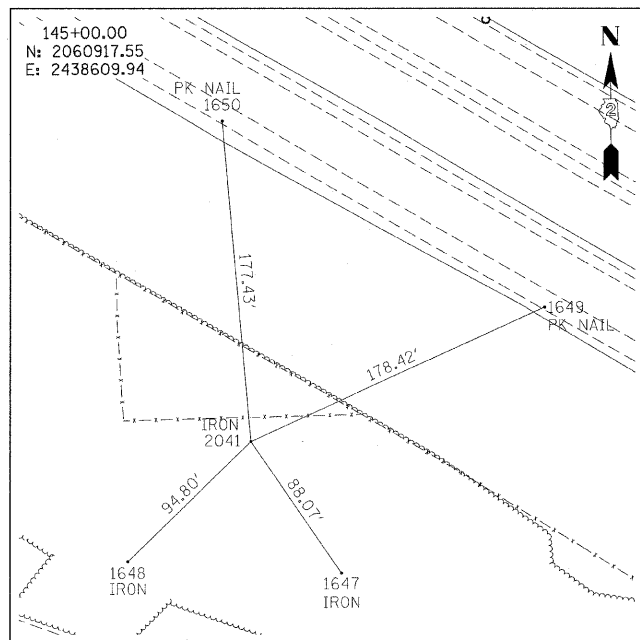
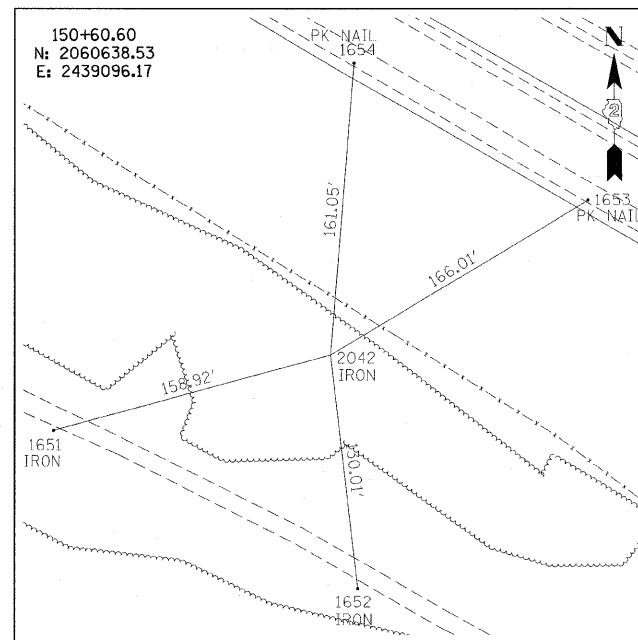


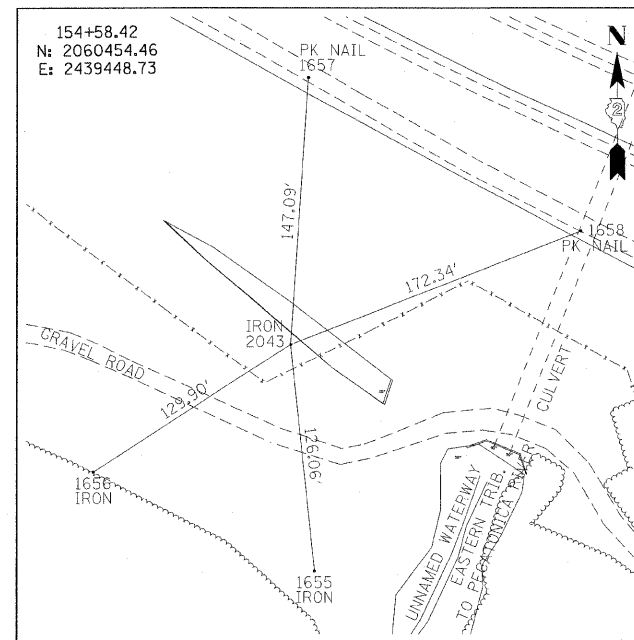
F.A.P. RTE.	SECTION	COUNTY	TOTAL SHEETS	SHEET NO.
301	177-2 (-1A, B-1, VB-1)	STEPHENSON	386	48
STA.		TO STA.		
FED. ROAD DIST. NO.		ILLINOIS FED. AID PROJECT		
P-92-029-02		CONTRACT #64799		



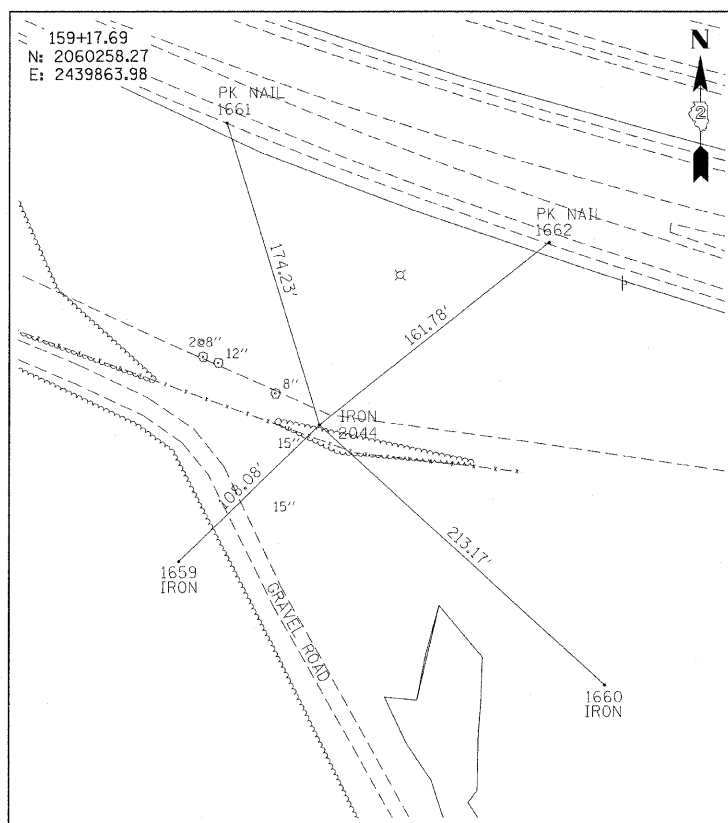
FRONTAGE ROAD 145+00.00



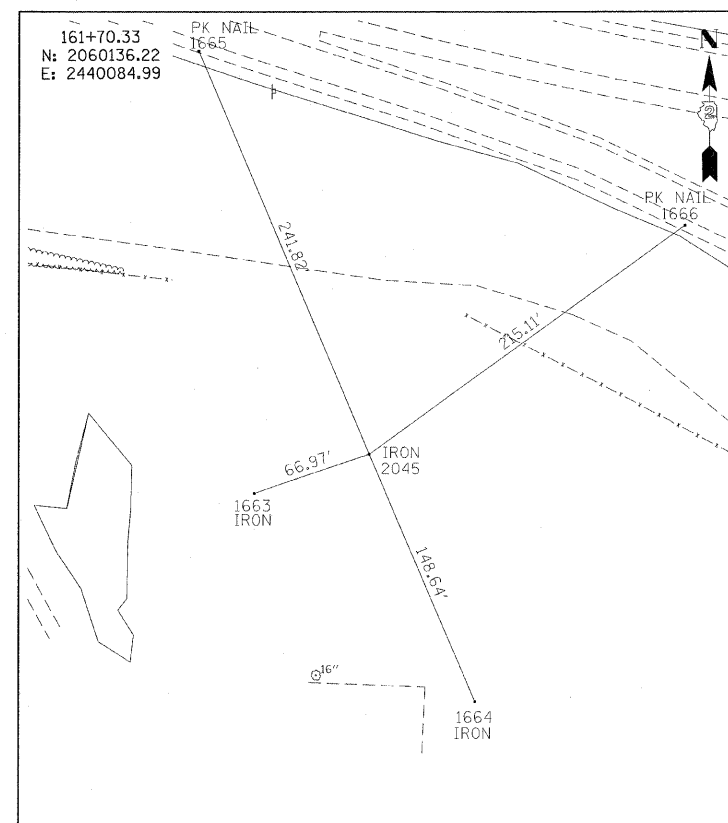
FRONTAGE ROAD 150+60.60



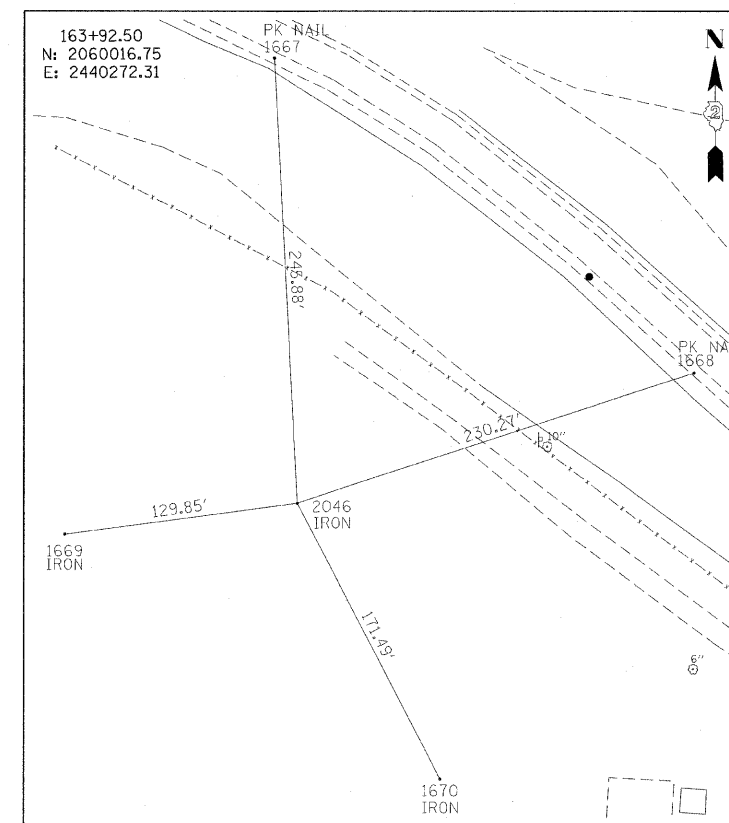
FRONTAGE ROAD 154+58.42



FRONTAGE ROAD 159+17.69



FRONTAGE ROAD 161+70.33



FRONTAGE ROAD 163+92.50

REVISIONS	
NAME	DATE

ILLINOIS DEPARTMENT OF TRANSPORTATION  
F.A.P. ROUTE 301 (US RTE. 20)  
FROM BOLTON ROAD TO WEST OF IL RTE. 26

ALIGNMENT, TIES  
AND BENCHMARKS

SCALE:  
DATE: 01-22-10

DRAWN BY SJV  
CHECKED BY RMH

