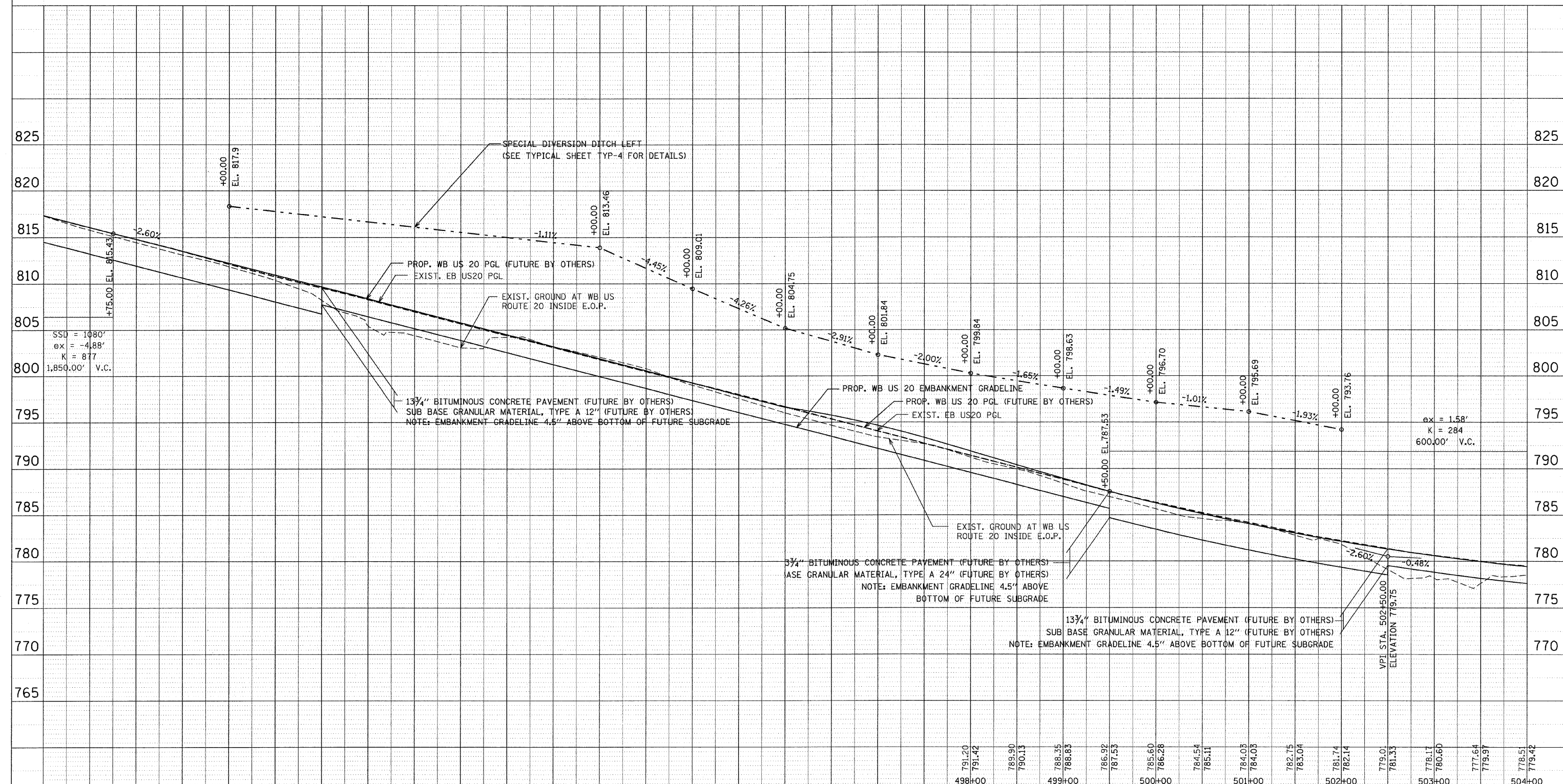
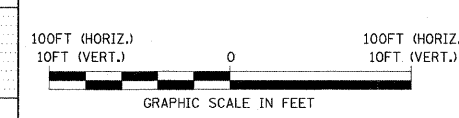


F.A. RTE.	SECTION	COUNTY	TOTAL SHEETS	SHEET NO.
301	177-2 (-1A, B-1, VB-1)	STEPHENSON	386	53
STA.	488+00	TO STA.	504+00	
FED. ROAD DIST. NO.	ILLINOIS	FED. AID PROJECT		
P-92-029-02				PLN-04 OF 32
CONTRACT #64799				



817.27 817.35	815.76 816.08	814.42 814.78	813.11 813.48	811.83 812.19	810.33 810.89	808.20 809.59	805.42 808.29	804.35 807.00	803.04 805.70	804.19 804.40	803.07 803.10	802.01 801.81	800.77 800.51	798.98 799.21	797.53 797.91	795.99 796.62	794.64 795.32	793.37 794.02	792.64 792.72	791.20 791.42	789.90 790.13	788.35 788.83	786.92 787.53	785.60 786.28	784.54 785.11	784.03 784.03	782.75 783.04	781.74 782.14	779.01 781.33	778.17 780.60	777.64 779.91	778.51 779.42		
488+00	489+00	490+00	491+00	492+00	493+00	494+00	495+00	496+00	497+00	498+00	499+00	500+00	501+00	502+00	503+00	504+00																		



REVISIONS	
NAME	DATE

ILLINOIS DEPARTMENT OF TRANSPORTATION
 F.A.P. ROUTE 301 (US RTE. 20)
 FROM BOLTON ROAD TO WEST OF IL RTE. 26

**PROFILE
 WESTBOUND U.S. ROUTE 20**

SCALE: VERT. 1"=50'
 HORIZ. 1"=50'
 DATE: 01-22-10

DRAWN BY RMH
 CHECKED BY DM