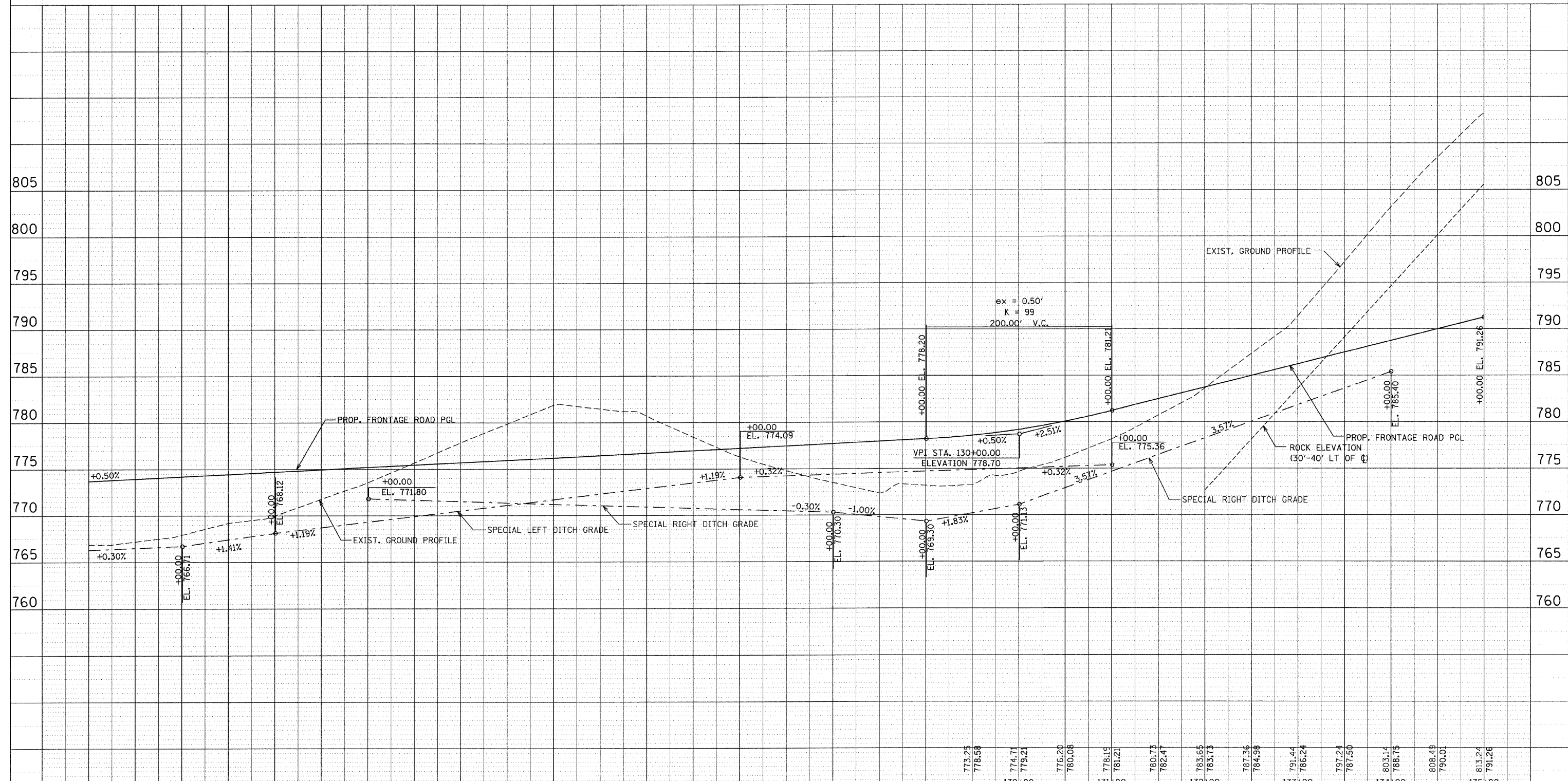


F.A. RTE.	SECTION	COUNTY	TOTAL SHEETS	SHEET NO.
301	177-2 (-1A, B-1, VB-1)	STEPHENSON	386	71
STA.	120+00	TO STA.	135+00	
FED. ROAD DIST. NO.	ILLINOIS	FED. AID PROJECT		
P-92-029-02				PLN-22 OF 32
CONTRACT #64799				



766.86	767.20	767.94	769.22	770.01	771.78	773.57	775.71	777.87	779.89	781.89	781.45	780.67	778.40	776.28	774.79	773.49	772.32	773.16
773.70	773.95	774.20	774.45	774.70	774.95	775.20	775.45	775.70	775.95	776.20	776.45	776.70	776.95	777.20	777.45	777.70	777.95	778.20
120+00	121+00	122+00	123+00	124+00	125+00	126+00	127+00	128+00	129+00									

100FT (HORIZ.)
10FT (VERT.)

0

100FT (HORIZ.)
10FT (VERT.)

GRAPHIC SCALE IN FEET

REVISIONS	
NAME	DATE

ILLINOIS DEPARTMENT OF TRANSPORTATION
F.A.P. ROUTE 301 (US RTE. 20)
FROM BOLTON ROAD TO WEST OF IL RTE. 26

PROFILE
FRONTAGE ROAD

SCALE: VERT. 1"=50'
HORIZ. 1"=50'

DATE: 01-22-10

DRAWN BY RMH
CHECKED BY DM