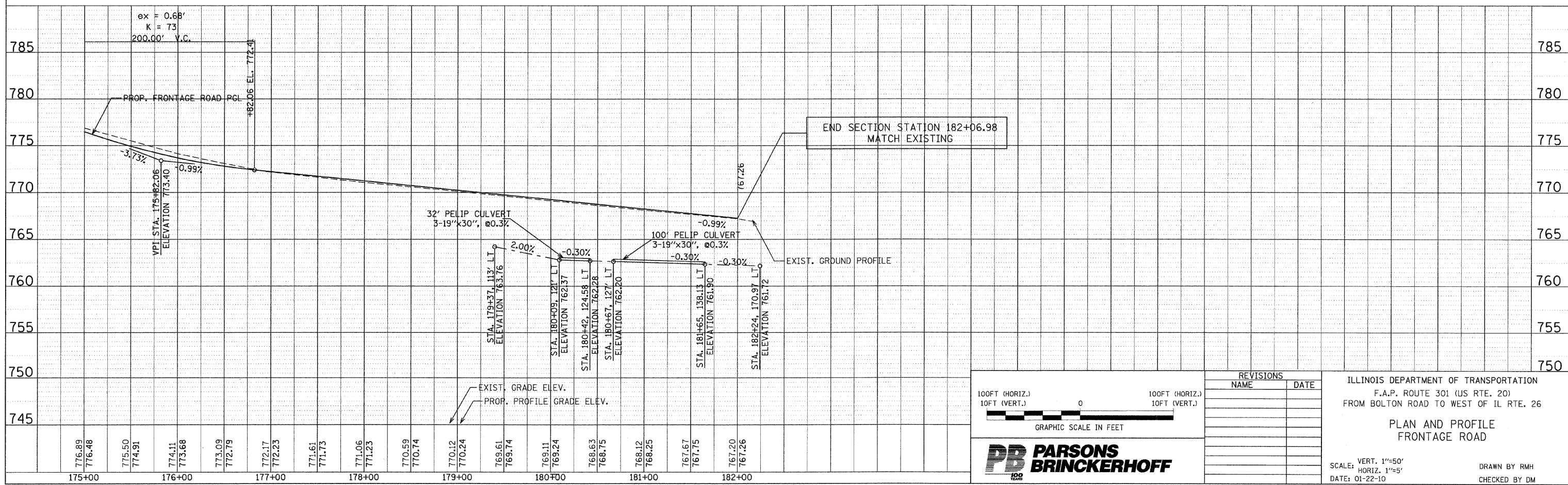
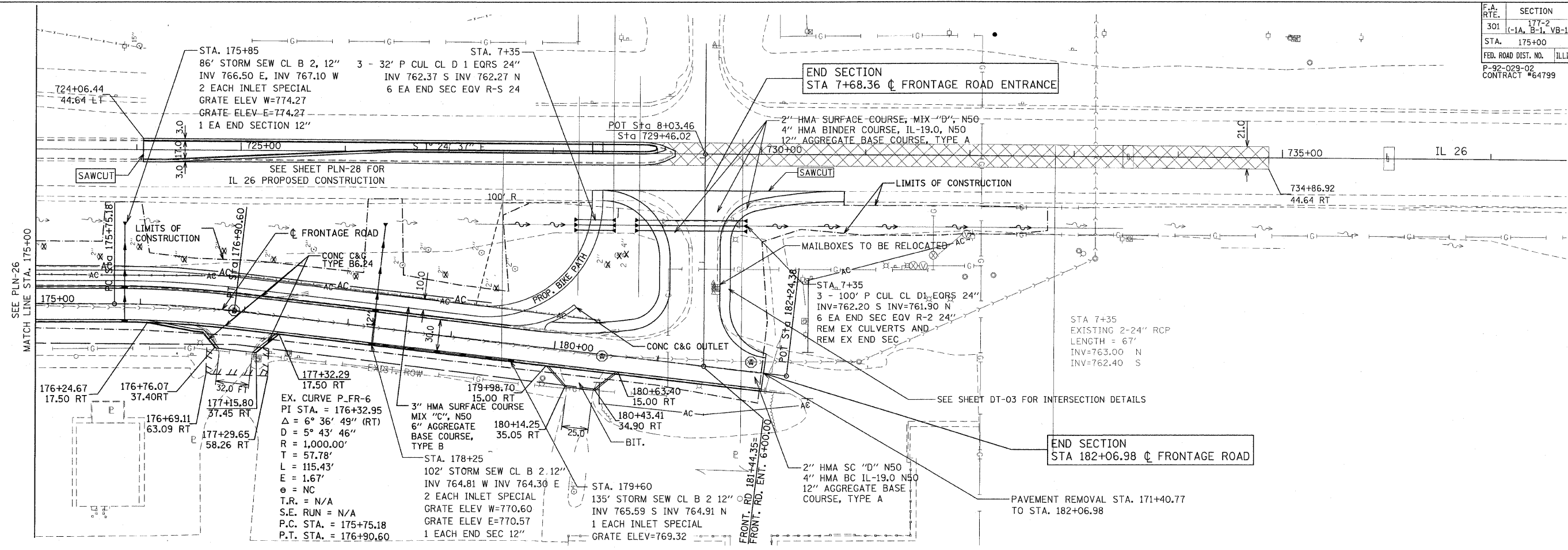


F.A. RTE.	SECTION	COUNTY	TOTAL SHEETS	SHEET NO.
301	177-2 (-1A, B-1, VB-1)	STEPHENSON	386	76
STA.	175+00	TO STA.	182+06.98	
FED. ROAD DIST. NO.	ILLINOIS	FED. AID PROJECT		
P-92-029-02		CONTRACT #64799		PLN-27 OF 32



100FT (HORIZ.)  
10FT (VERT.)

0 100FT (HORIZ.)  
10FT (VERT.)

GRAPHIC SCALE IN FEET

**PB PARSONS BRINCKERHOFF**

REVISIONS	
NAME	DATE

ILLINOIS DEPARTMENT OF TRANSPORTATION  
F.A.P. ROUTE 301 (US RTE. 20)  
FROM BOLTON ROAD TO WEST OF IL RTE. 26

**PLAN AND PROFILE  
FRONTAGE ROAD**

VERT. 1"=50'  
SCALE: HORIZ. 1"=50'  
DATE: 01-22-10

DRAWN BY RMH  
CHECKED BY DM