

F.A.P. RTE.	SECTION	COUNTY	TOTAL SHEETS	SHEET NO.
301	177-2 (-1A, B-1, VB-1)	STEPHENSON	386	86
STA.		TO STA.		
FED. ROAD DIST. NO.		ILLINOIS FED. AID PROJECT		
P-92-029-02		CONTRACT# 64799		
				STG-01 OF 23

SUGGESTED MAINTENANCE OF TRAFFIC SEQUENCE

- STAGE IA**
- CONSTRUCT TEMPORARY PARKING LOT ALONG KLEVER ROAD.
 - RESURFACE KLEVER ROAD.

- STAGE I**
- GRADE WB US 20 NORTH OF EXISTING US 20 FROM STA. 475+55.31 TO STA. 631+00.
 - CONSTRUCT PROPOSED FRONTAGE ROAD AND BIKE PATH FROM STA. 98+50 TO STA. 173+50.
 - CONSTRUCT PROPOSED HEINE ROAD AND BIKE PATH FROM STA. 20+00 TO STA. 22+77.
 - PERFORM MEDIAN WORK AND INSTALL TEMPORARY PAVEMENT ALONG IL 26 FROM STA. 727+86 TO STA. 729+15.

- STAGE IIA**
- INSTALL PIPE CULVERTS AND CONSTRUCT PROPOSED AND TEMPORARY PAVEMENT ALONG THE EAST SIDE OF THE PROPOSED FRONTAGE ROAD FROM STA. 173+50 TO STA. 182+00.

- CONSTRUCT PROPOSED PAVEMENT ALONG THE EAST SIDE OF THE PROPOSED FRONTAGE ROAD FROM STA. 95+50 TO STA. 100+00.

- STAGE IIB**
- CONSTRUCT PROPOSED FRONTAGE ROAD PAVEMENT FROM STA. 173+50 TO STA. 182+00.

- CONSTRUCT PROPOSED PAVEMENT ALONG THE WEST SIDE OF THE PROPOSED FRONTAGE ROAD FROM STA. 95+50 TO STA. 100+00.

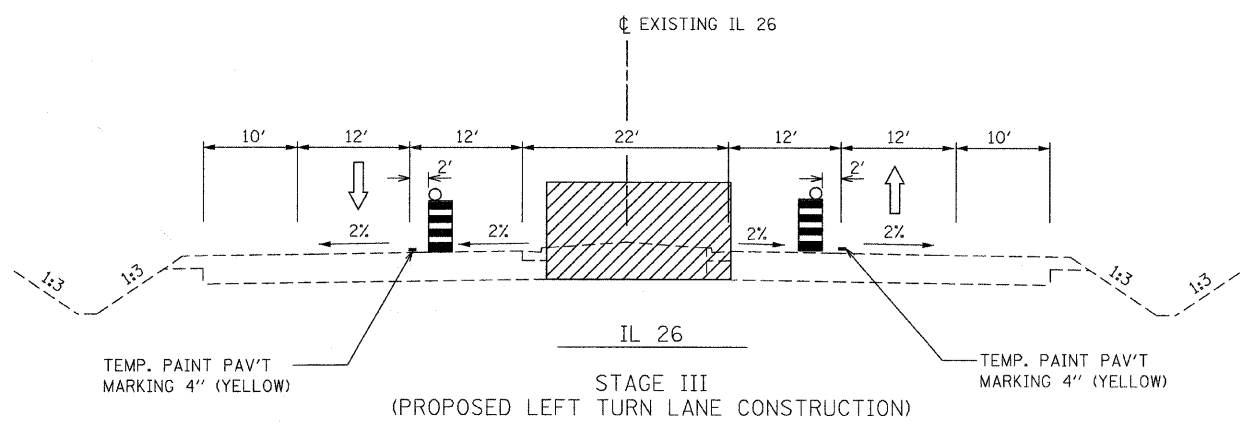
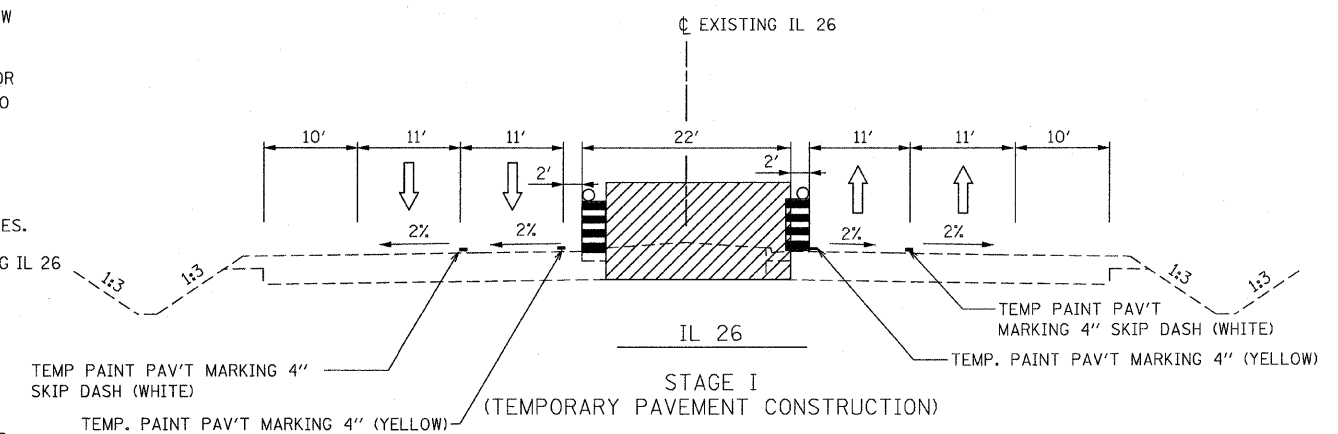
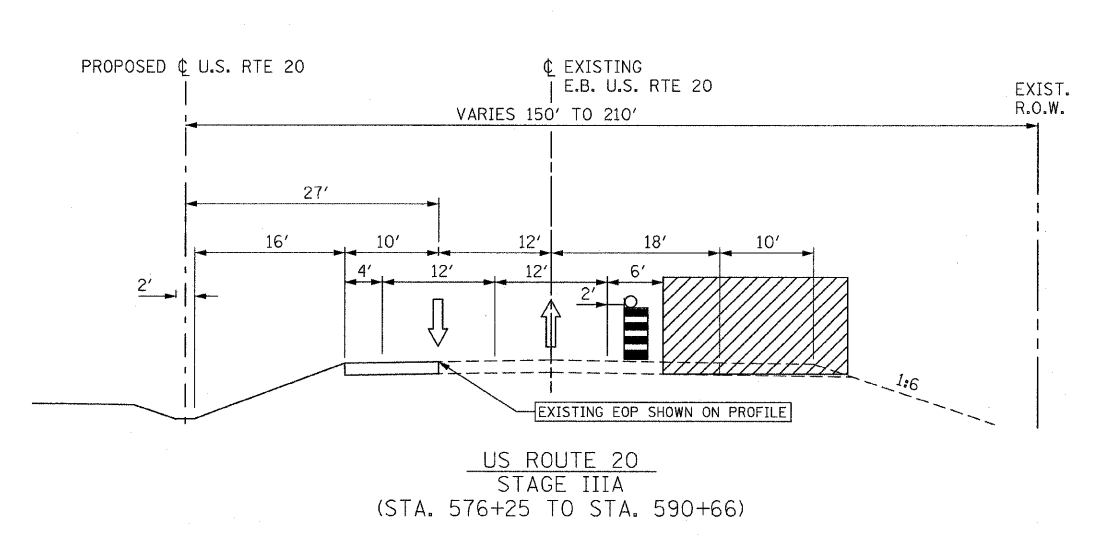
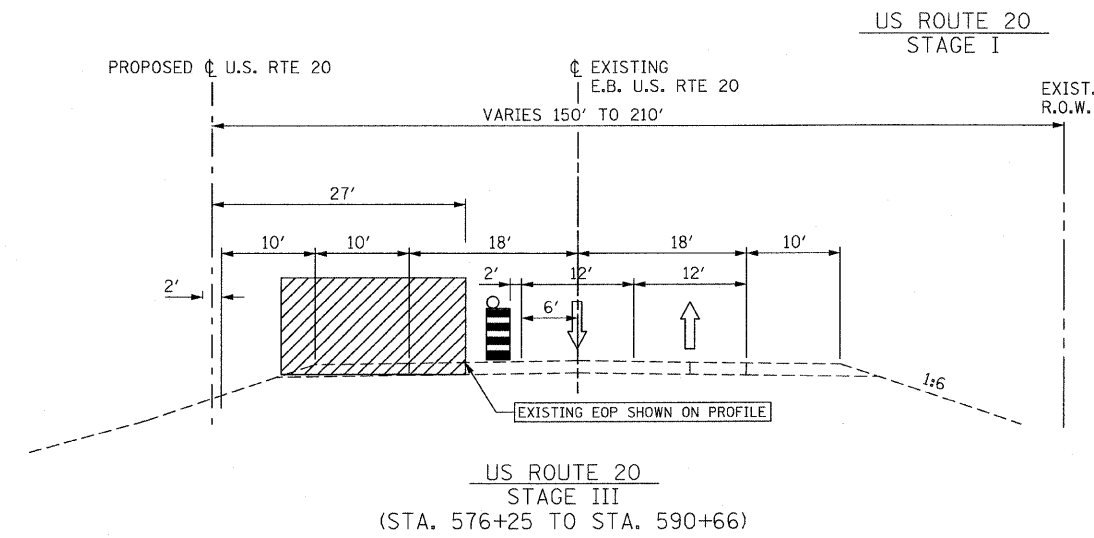
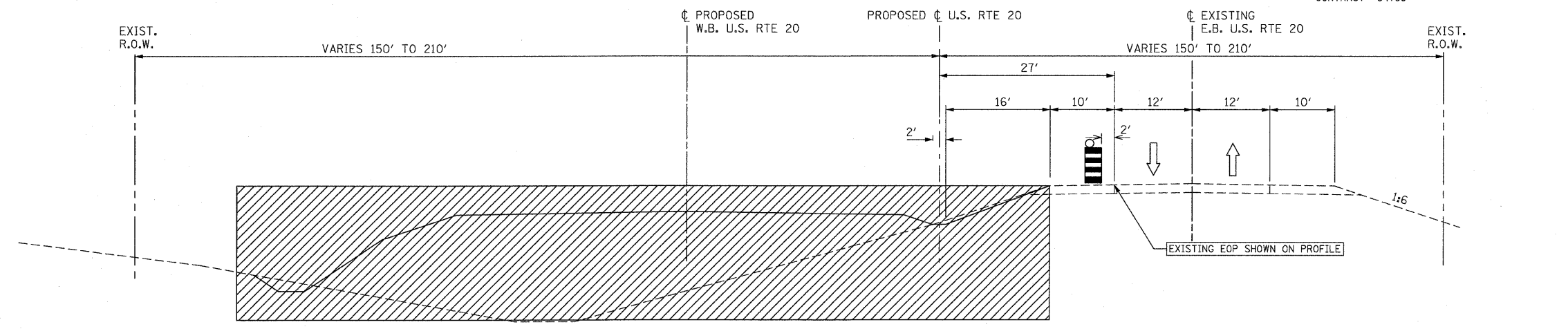
- CONSTRUCT PROPOSED HEINE ROAD AND PROPOSED BIKE PATH PAVEMENT FROM STA. 173+50 TO STA. 162+00.

- STAGE IIC**
- REMOVE TEMPORARY PAVEMENT AND CONSTRUCT PROPOSED BIKE PATH PAVEMENT ALONG THE EAST SIDE OF THE PROPOSED FRONTAGE ROAD FROM STA. 173+50 TO STA. 182+00.

- STAGE III**
- ONCE HEINE ROAD IS OPEN TO TRAFFIC, ALL ACCESS (SEE CONSTRUCTION PLANS) TO US 20 FROM FAIRVIEW ROAD SHALL BE REMOVED.
 - EXISTING SHOULDER PAVEMENT TO BE REMOVED PRIOR TO CONSTRUCTING PROPOSED SHOULDER ALONG US 20 FROM STA. 576+25 TO STA. 590+66.
 - REMOVE TEMPORARY PARKING LOT AND CONSTRUCT PROPOSED CUL-DE-SAC ALONG KLEVER ROAD.
 - REMOVE ACCESS TO US 20 FROM ALL FIELD ENTRANCES.
 - PROPOSED MEDIAN WORK SHALL BE PERFORMED ALONG IL 26 FROM STA. 724+06 TO STA. 734+87.

MAINTENANCE OF TRAFFIC GENERAL NOTES

1. ACCESS SHALL BE MAINTAINED TO ALL PROPERTIES FOR THE DURATION OF THE PROJECT.
2. ALL EXISTING PAVEMENT MARKING AND RAISED REFLECTIVE PAVEMENT MARKERS CONFLICTING WITH TEMPORARY TRAFFIC PATTERNS SHALL BE REMOVED PRIOR TO THE START OF CONSTRUCTION OR AS DIRECTED BY THE ENGINEER.
3. ALL WARNING SIGNS SHALL BE BLACK LEGEND AND BORDER ON ORANGE REFLECTORIZED BACKGROUND UNLESS OTHERWISE NOTED.



LEGEND

- DRUM WITH STEADY BURNING MONO DIRECTION LIGHT AT 50' C-C
- WORK ZONE
- DIRECTION OF TRAFFIC



REVISIONS	
NAME	DATE

ILLINOIS DEPARTMENT OF TRANSPORTATION
 F.A.P. ROUTE 301 (US RTE. 20)
 FROM BOLTON ROAD TO WEST OF IL RTE. 26

SUGGESTED TRAFFIC CONTROL AND STAGING NOTES AND DETAILS

SCALE: N.T.S. DRAWN BY RMH
 DATE: 01-22-10 CHECKED BY DVS