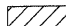




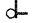

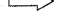
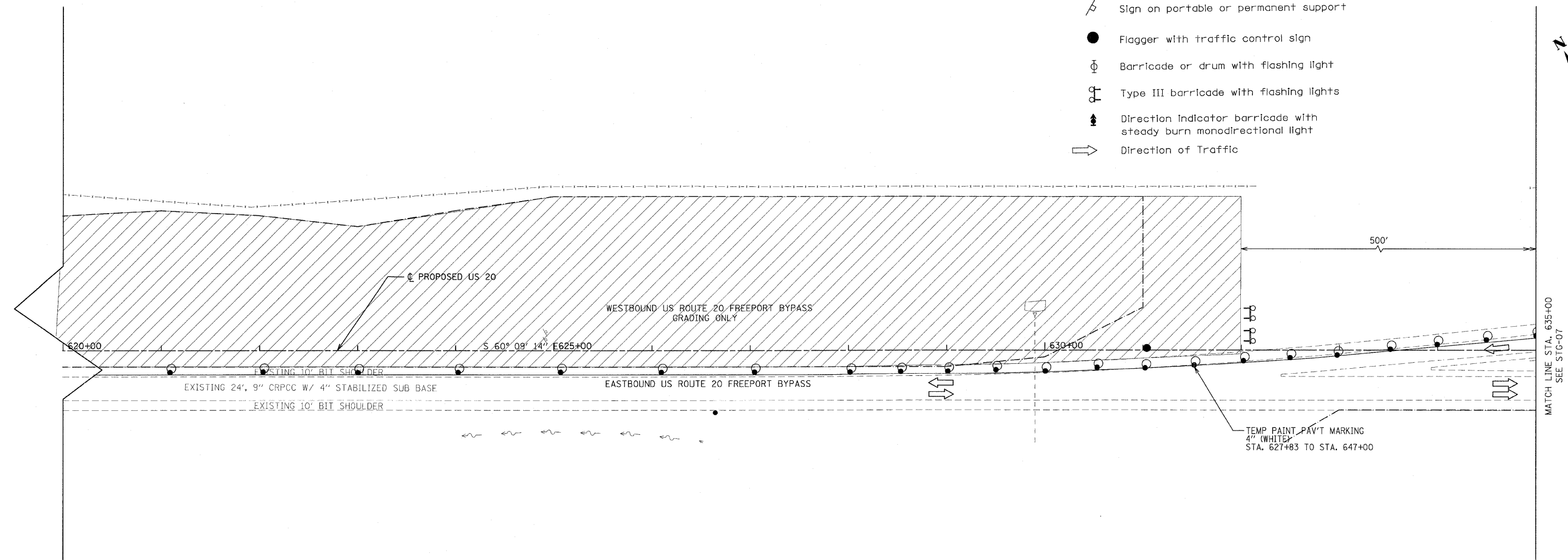
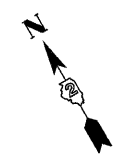


F.A.P. RTE.	SECTION	COUNTY	TOTAL SHEETS	SHEET NO.
301	177-2 (-1A, B-1, VB-1)	STEPHENSON	386	91
STA. 620+00	TO STA. 635+00			
FED. ROAD DIST. NO.	ILLINOIS	FED. AID PROJECT		
P-92-029-02	CONTRACT #64799		STG-06 OF 23	

LEGEND

-  Work area
-  Drums with steady burning mono-directional lights at 50' C-C in tapers and 100' C-C in tangents
-  Sign on portable or permanent support
-  Flagger with traffic control sign
-  Barricade or drum with flashing light
-  Type III barricade with flashing lights
-  Direction indicator barricade with steady burn monodirectional light
-  Direction of Traffic



STAGE I

REVISIONS	
NAME	DATE

ILLINOIS DEPARTMENT OF TRANSPORTATION
 F.A.P. ROUTE 301 (US RTE. 20)
 FROM BOLTON ROAD TO WEST OF IL RTE. 26

SUGGESTED TRAFFIC CONTROL
 AND STAGING PLANS
 WESTBOUND U.S. ROUTE 20

SCALE: 1"=50'
 DATE: 01-22-10

DRAWN BY SJV
 CHECKED BY RMH

