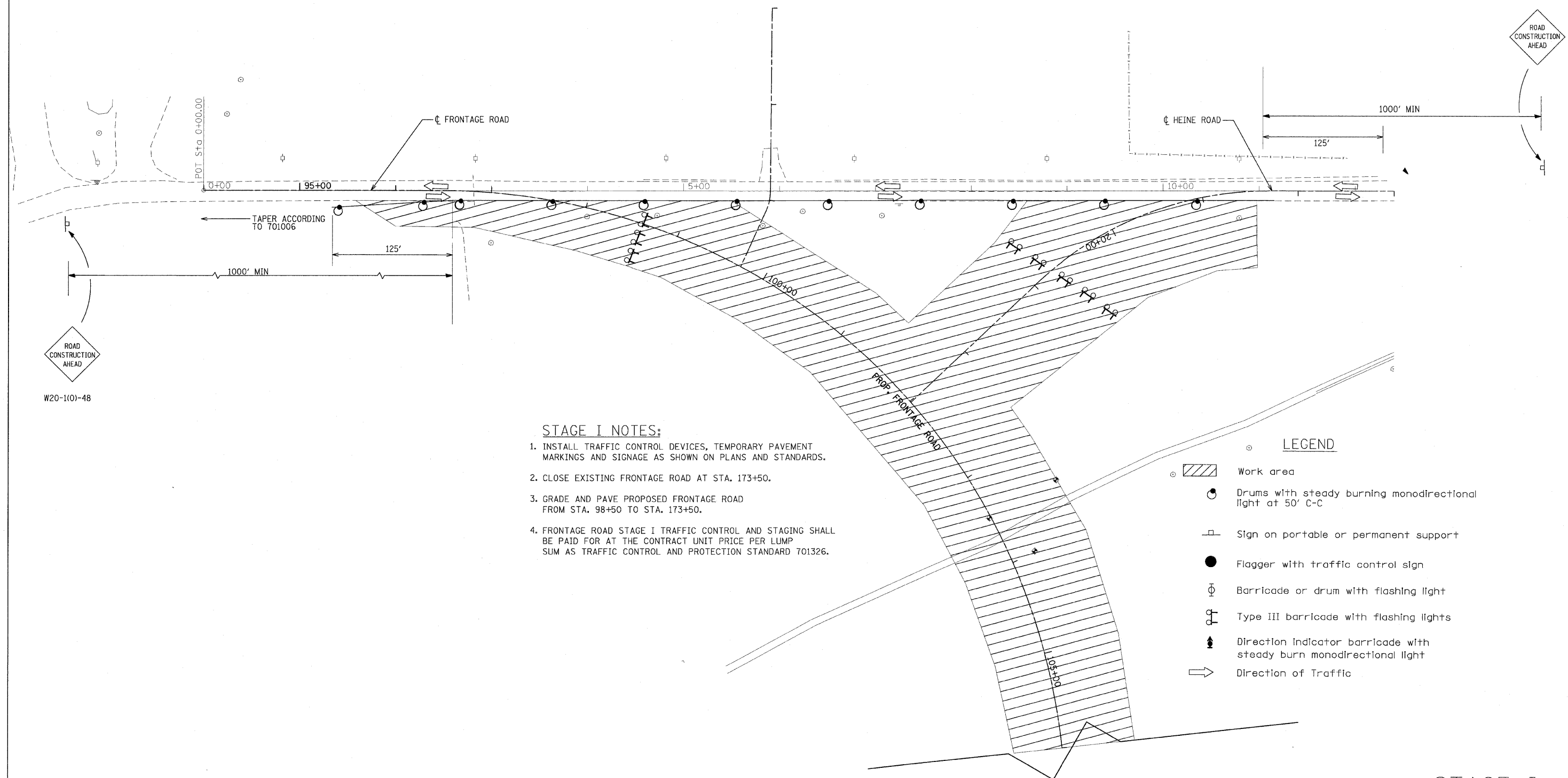


F.A.P. RTE.	SECTION	COUNTY	TOTAL SHEETS	SHEET NO.
301	177-2 (-1A, B-1, VB-1)	STEPHENSON	386	93
STA. 94+00	TO STA. 105+00			
FED. ROAD DIST. NO.	ILLINOIS	FED. AID PROJECT		
P-92-029-02	STG-08 OF 23			
CONTRACT #64799	W20-10(-)48			



W20-10(-)48

STAGE I NOTES:

1. INSTALL TRAFFIC CONTROL DEVICES, TEMPORARY PAVEMENT MARKINGS AND SIGNAGE AS SHOWN ON PLANS AND STANDARDS.
2. CLOSE EXISTING FRONTAGE ROAD AT STA. 173+50.
3. GRADE AND PAVE PROPOSED FRONTAGE ROAD FROM STA. 98+50 TO STA. 173+50.
4. FRONTAGE ROAD STAGE I TRAFFIC CONTROL AND STAGING SHALL BE PAID FOR AT THE CONTRACT UNIT PRICE PER LUMP SUM AS TRAFFIC CONTROL AND PROTECTION STANDARD 701326.

LEGEND

- Work area
- Drums with steady burning monodirectional light at 50' C-C
- Sign on portable or permanent support
- Flagger with traffic control sign
- Barricade or drum with flashing light
- Type III barricade with flashing lights
- Direction indicator barricade with steady burn monodirectional light
- Direction of Traffic

STAGE I

REVISIONS	
NAME	DATE

ILLINOIS DEPARTMENT OF TRANSPORTATION
 F.A.P. ROUTE 301 (US RTE. 20)
 FROM BOLTON ROAD TO WEST OF IL RTE. 26

SUGGESTED TRAFFIC CONTROL AND STAGING PLANS FRONTAGE ROAD

SCALE: 1"=50'
 DATE: 01-22-10

DRAWN BY SJV
 CHECKED BY RMH

