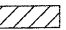




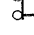

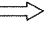


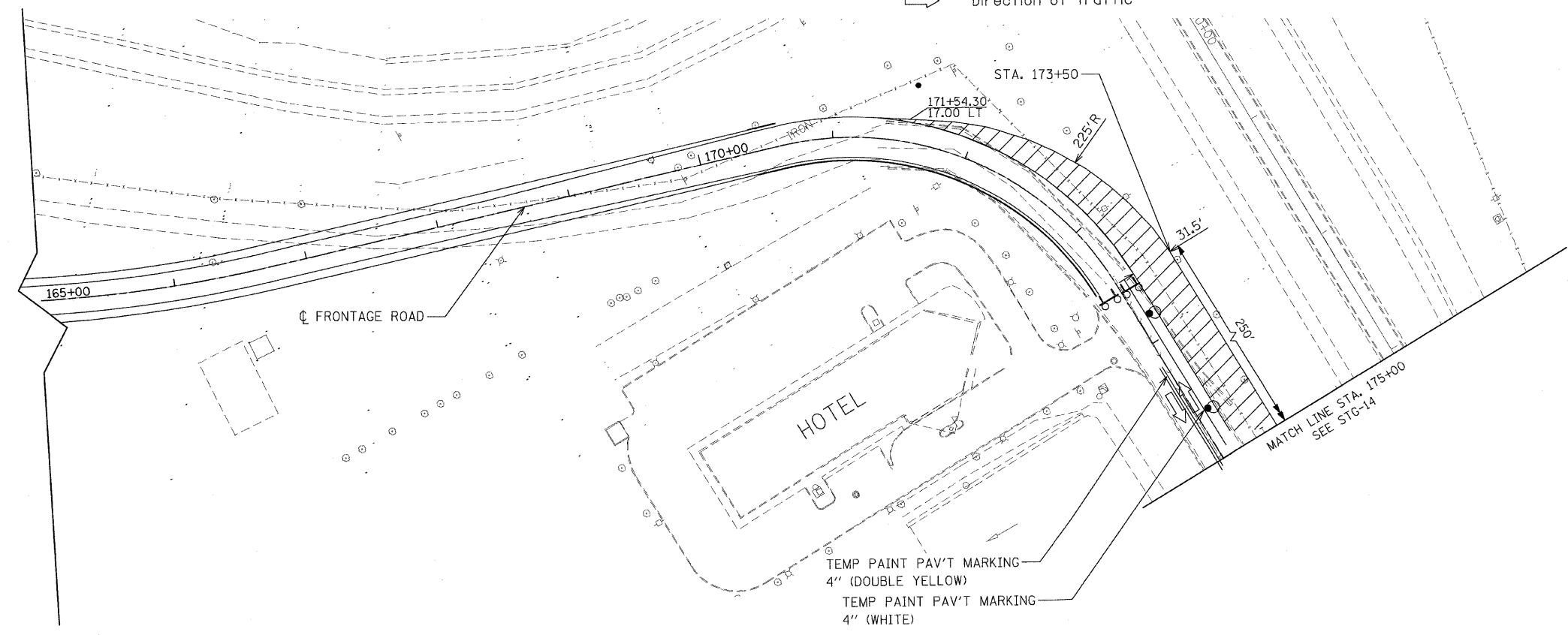
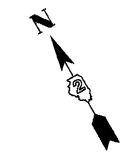
F.A.P. RTE.	SECTION	COUNTY	TOTAL SHEETS	SHEET NO.
301	177-2 (-1A, B-1, VB-1)	STEPHENSON	386	97
STA. 165+00	TO STA. 175+00			
FED. ROAD DIST. NO.	ILLINOIS	FED. AID PROJECT		
P-92-029-02 CONTRACT #64799			STG-12 OF 23	

STAGE IIA NOTES:

1. REMOVE EXISTING PAVEMENT MARKINGS. INSTALL TRAFFIC CONTROL DEVICES, TEMPORARY PAVEMENT MARKINGS AND SIGNAGE AS SHOWN ON PLANS AND STANDARDS.
2. SHIFT TRAFFIC TO TEMPORARY LANES.
3. REMOVE EXISTING FENCE STA. 173+50 TO STA.177+00.
4. REMOVE EXISTING CURB & GUTTER ALONG NORTHBOUND LANE.
5. CONSTRUCT TEMPORARY PAVMENT. GRADING OF TEMPORARY PAVEMENT SHALL CORRESPOND TO PROPOSED BIKE PATH GRADING.
6. ROAD CLOSURE TRAFFIC CONTROL OF THE FRONTAGE ROAD SHALL BE PAID FOR AT THE CONTRACT UNIT PRICE PER LUMP SUM AS TRAFFIC CONTROL ROAD CLOSURE.

LEGEND

-  Work area
-  Drums with steady burning mono-directional lights at 50' C-C in tapers and 100' C-C in tangents
-  Sign on portable or permanent support
-  Flagger with traffic control sign
-  Barricade or drum with flashing light
-  Type III barricade with flashing lights
-  Direction Indicator barricade with steady burn monodirectional light
-  Direction of Traffic



STAGE IIA

REVISIONS	
NAME	DATE

ILLINOIS DEPARTMENT OF TRANSPORTATION
 F.A.P. ROUTE 301 (US RTE. 20)
 FROM BOLTON ROAD TO WEST OF IL RTE. 26

**SUGGESTED TRAFFIC CONTROL AND STAGING PLANS
 FRONTAGE ROAD**

SCALE: 1"=50'
 DATE: 01-22-10

DRAWN BY SJV
 CHECKED BY RMH

