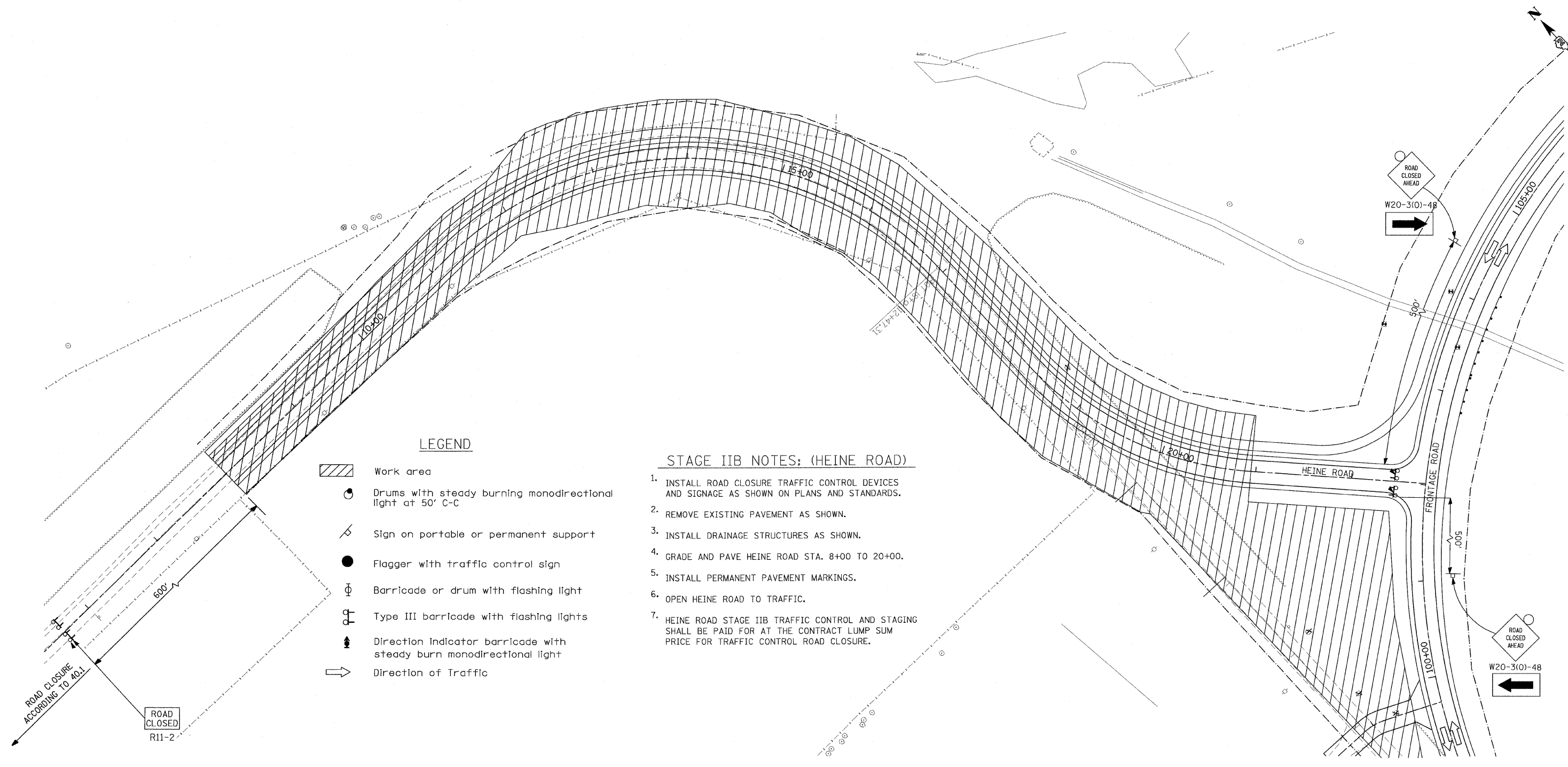


F.A.P. RTE.	SECTION	COUNTY	TOTAL SHEETS	SHEET NO.
301	177-2 (-1A, B-1, VR-1)	STEPHENSON	386	99
STA. 8+00	TO STA. 22+77.35			
FED. ROAD DIST. NO.	ILLINOIS	FED. AID PROJECT		
P-92-029-02			STG-14 OF 23	
CONTRACT #64799				



LEGEND

- Work area
- Drums with steady burning monodirectional light at 50' C-C
- Sign on portable or permanent support
- Flagger with traffic control sign
- Barricade or drum with flashing light
- Type III barricade with flashing lights
- Direction Indicator barricade with steady burn monodirectional light
- Direction of Traffic

STAGE IIB NOTES: (HEINE ROAD)

1. INSTALL ROAD CLOSURE TRAFFIC CONTROL DEVICES AND SIGNAGE AS SHOWN ON PLANS AND STANDARDS.
2. REMOVE EXISTING PAVEMENT AS SHOWN.
3. INSTALL DRAINAGE STRUCTURES AS SHOWN.
4. GRADE AND PAVE HEINE ROAD STA. 8+00 TO 20+00.
5. INSTALL PERMANENT PAVEMENT MARKINGS.
6. OPEN HEINE ROAD TO TRAFFIC.
7. HEINE ROAD STAGE IIB TRAFFIC CONTROL AND STAGING SHALL BE PAID FOR AT THE CONTRACT LUMP SUM PRICE FOR TRAFFIC CONTROL ROAD CLOSURE.

STAGE IIB

REVISIONS	
NAME	DATE

ILLINOIS DEPARTMENT OF TRANSPORTATION
 F.A.P. ROUTE 301 (US RTE. 20)
 FROM BOLTON ROAD TO WEST OF IL RTE. 26
 SUGGESTED TRAFFIC CONTROL
 AND STAGING PLANS
 HEINE ROAD

SCALE: 1"=50'
 DATE: 01-22-10

DRAWN BY SJV
 CHECKED BY RMH

