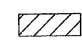



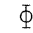
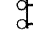




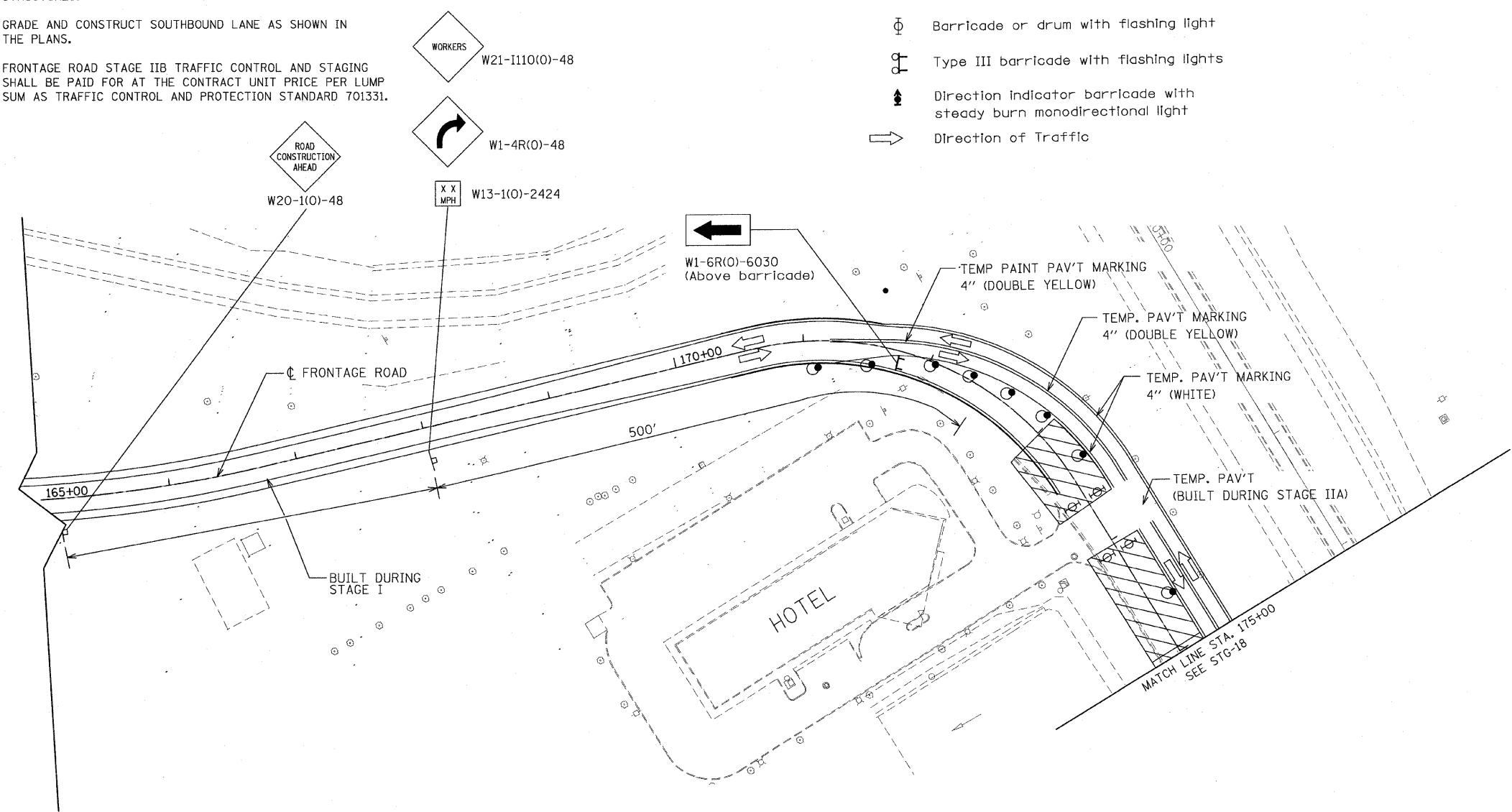
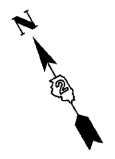
F.A.P. RTE.	SECTION	COUNTY	TOTAL SHEETS	SHEET NO.
301	177-2 (-1A, B-1, VB-1)	STEPHENSON	386	101
STA. 165+00	TO STA. 175+00			
FED. ROAD DIST. NO.	ILLINOIS	FED. AID PROJECT		
P-92-029-02			STG-16 OF 23	
CONTRACT #64799				

**STAGE IIB NOTES:**

1. RELOCATE TRAFFIC CONTROL DEVICES, TEMPORARY PAVEMENT MARKINGS AND SIGNAGE AS SHOWN ON PLANS AND STANDARDS.
2. SHIFT TRAFFIC TO TEMPORARY PAVEMENT AND FAR EAST LANE OF EXISTING PAVEMENT.
3. REMOVE EXISTING SOUTHBOUND PAVEMENT AND CURB & GUTTER.
4. INSTALL DRAINAGE STRUCTURES AS SHOWN IN THE PLANS. PROTECT EXISTING UNDERGROUND SANITARY SEWER AND STRUCTURES.
5. GRADE AND CONSTRUCT SOUTHBOUND LANE AS SHOWN IN THE PLANS.
6. FRONTAGE ROAD STAGE IIB TRAFFIC CONTROL AND STAGING SHALL BE PAID FOR AT THE CONTRACT UNIT PRICE PER LUMP SUM AS TRAFFIC CONTROL AND PROTECTION STANDARD 701331.

**LEGEND**

-  Work area
-  Drums with steady burning mono-directional lights at 50' C-C in tapers and 100' C-C in tangents
-  Sign on portable or permanent support
-  Flagger with traffic control sign
-  Barricade or drum with flashing light
-  Type III barricade with flashing lights
-  Direction Indicator barricade with steady burn monodirectional light
-  Direction of Traffic



**STAGE IIB**

REVISIONS	
NAME	DATE

ILLINOIS DEPARTMENT OF TRANSPORTATION  
 F.A.P. ROUTE 301 (US RTE. 20)  
 FROM BOLTON ROAD TO WEST OF IL RTE. 26

SUGGESTED TRAFFIC CONTROL  
 AND STAGING PLANS  
 FRONTAGE ROAD

SCALE: 1"=50'  
 DATE: 01-22-10

DRAWN BY SJV  
 CHECKED BY RMH

