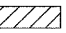

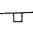


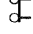

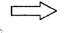
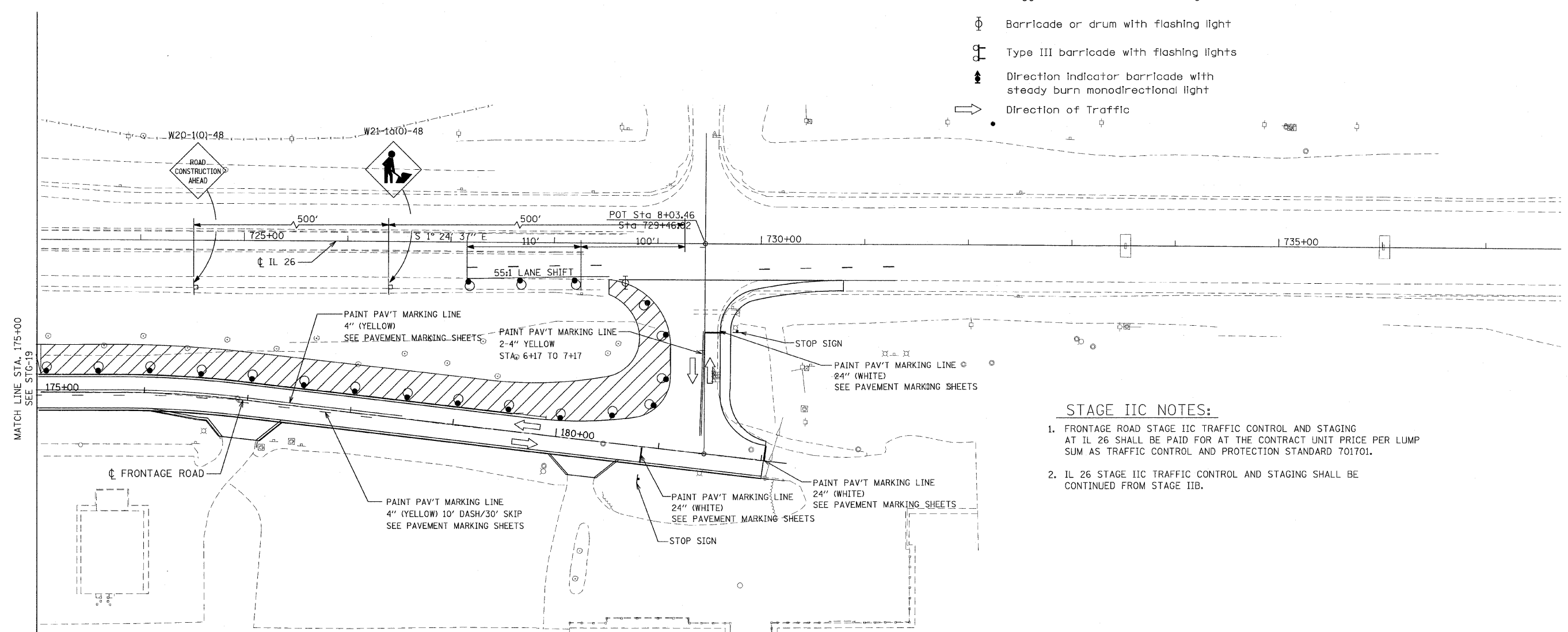
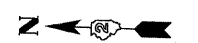


F.A.P. RTE.	SECTION	COUNTY	TOTAL SHEETS	SHEET NO.
301	177-2 (-1A, B-1, VB-1)	STEPHENSON	386	104
STA.		TO STA.		
FED. ROAD DIST. NO.	ILLINOIS	FED. AID PROJECT		
P-92-029-02				STG-19 OF 23
CONTRACT #64799				

LEGEND

-  Work area
-  Drums with steady burning mono-directional lights at 50' C-C in tapers and 100' C-C in tangents
-  Sign on portable or permanent support
-  Flagger with traffic control sign
-  Barricade or drum with flashing light
-  Type III barricade with flashing lights
-  Direction indicator barricade with steady burn monodirectional light
-  Direction of Traffic



STAGE IIC NOTES:

1. FRONTAGE ROAD STAGE IIC TRAFFIC CONTROL AND STAGING AT IL 26 SHALL BE PAID FOR AT THE CONTRACT UNIT PRICE PER LUMP SUM AS TRAFFIC CONTROL AND PROTECTION STANDARD 701701.
2. IL 26 STAGE IIC TRAFFIC CONTROL AND STAGING SHALL BE CONTINUED FROM STAGE IIB.

STAGE IIC

REVISIONS	
NAME	DATE

ILLINOIS DEPARTMENT OF TRANSPORTATION
 F.A.P. ROUTE 301 (US RTE. 20)
 FROM BOLTON ROAD TO WEST OF IL RTE. 26

**SUGGESTED TRAFFIC CONTROL AND STAGING PLANS
 FRONTAGE ROAD**

SCALE: 1"=50'
 DATE: 01-22-10

DRAWN BY SJV
 CHECKED BY RMH



MATCH LINE STA. 175+00
SEE STG-19