


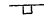


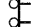

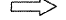


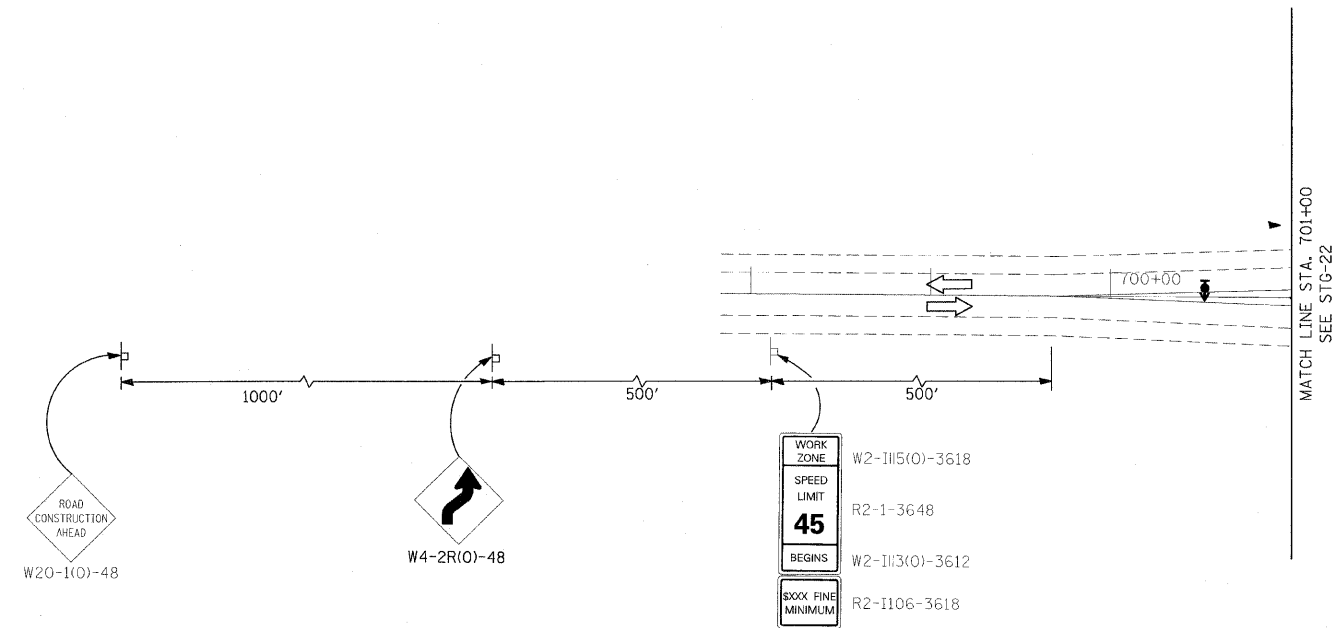
F.A.P. RTE.	SECTION	COUNTY	TOTAL SHEETS	SHEET NO.
301	177-2 (-1A, B-1, VB-1)	STEPHENSON	386	105
STA.		TO STA.		
FED. ROAD DIST. NO.		ILLINOIS	FED. AID PROJECT	
P-92-029-02				STG-20 OF 23
CONTRACT #64799				

LEGEND

-  Arrow Board
-  Work area
-  Drums with steady burning mono-directional lights at 50' C-C in tapers and 100' C-C in tangents
-  Sign on portable or permanent support
-  Flagger with traffic control sign
-  Barricade or drum with flashing light
-  Type III barricade with flashing lights
-  Direction indicator barricade with steady burn monodirectional light
-  Direction of Traffic

STAGE III NOTES:

1. REMOVE EXISTING PAVEMENT MARKINGS. INSTALL TRAFFIC CONTROL DEVICES, TEMPORARY PAVEMENT MARKINGS AND SIGNAGE AS SHOWN ON PLANS AND STANDARDS.
2. CLOSE ONE NORTHBOUND AND SOUTHBOUND LANE ALONG THE MEDIAN.
3. REMOVE EXISTING MEDIAN, PAVEMENT AND CURB & GUTTER AS SHOWN.
4. CONSTRUCT PROPOSED CURB & GUTTER, MEDIAN AND PAVEMENT AS SHOWN.
5. INSTALL PERMANENT PAVEMENT MARKINGS AS SHOWN.
6. OPEN LANES AND SHIFT TRAFFIC TO PERMANENT PAVEMENT MARKINGS.
7. IL 26 STAGE III TRAFFIC CONTROL AND STAGING SHALL BE PAID FOR AT THE CONTRACT UNIT PRICE PER LUMP SUM AS TRAFFIC CONTROL AND PROTECTION STANDARDS 701422 AND 701602.



STAGE III

REVISIONS	
NAME	DATE

ILLINOIS DEPARTMENT OF TRANSPORTATION
 F.A.P. ROUTE 301 (US RTE. 20)
 FROM BOLTON ROAD TO WEST OF IL RTE. 26
 SUGGESTED TRAFFIC CONTROL
 AND STAGING PLANS
 IL 26

SCALE: 1"=50'
 DATE: 01-22-10
 DRAWN BY SJV
 CHECKED BY RMH

