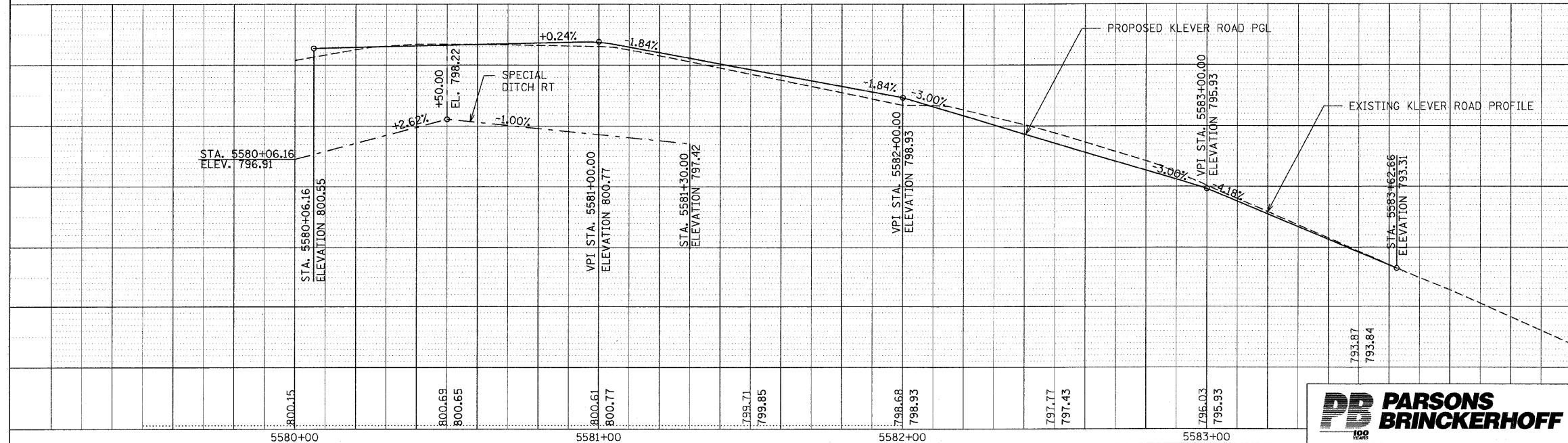


KLEVER ROAD CUL DE SAC PAVEMENT ELEVATIONS

OUTSIDE EDGE OF CUL DE SAC PAVEMENT

LABEL	STATION	SLOPE FROM PT	ELEVATIONS	OFFSET FROM CL
A	5580+55.86		801.62	19.63
B	5580+24.93	-2.00%	801.00	16.27
C	5580+06.16	-2.00%	800.55	0.02
D	5580+00.00	-2.25%	800.03	22.61
E	5580+05.69	-2.25%	799.75	46.71
F	5580+24.62	-2.50%	799.41	63.40
G	5580+51.09	-2.50%	799.45	66.91
H	5580+74.07	-2.50%	799.68	55.90
I	5580+93.90	-2.50%	799.85	40.21
J	5581+13.74	-2.25%	799.99	24.43
K	5581+35.59	-2.25%	799.68	12.77
L	5581+59.83	-2.00%	799.47	7.36

NOTE:
APRONS SHALL BE CONSTRUCTED
OF THE SAME PAVEMENT TYPE
AND DEPTH AS KLEVER ROAD.



REVISIONS	
NAME	DATE

ILLINOIS DEPARTMENT OF TRANSPORTATION
F.A.P. ROUTE 301 (US RTE. 20)
FROM BOLTON ROAD TO WEST OF IL RTE. 26
PAVEMENT ELEVATION DETAILS
KLEVER ROAD CUL DE SAC

SCALE: VERT. 1"=20'
HORIZ. 1"=20'
DATE: 01-22-10
DRAWN BY
CHECKED BY

