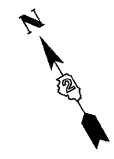
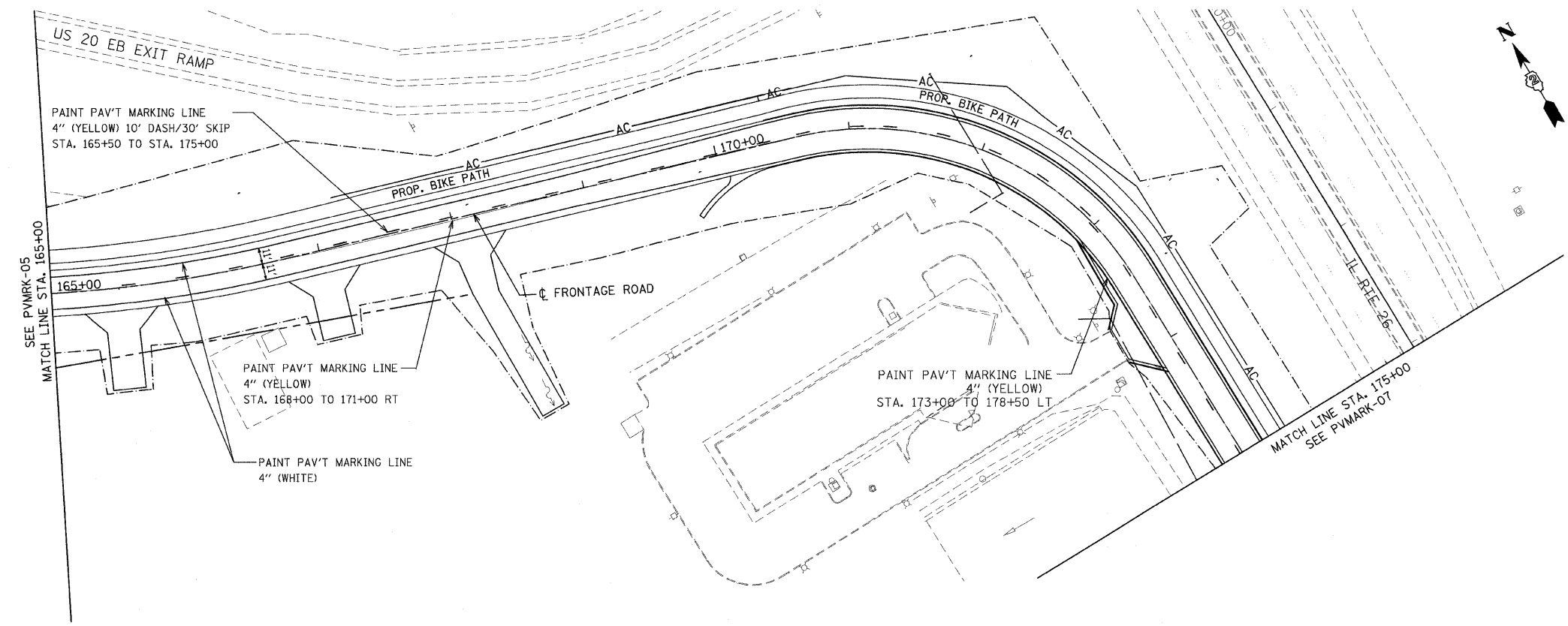
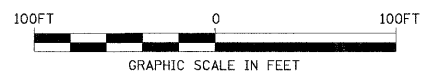


F.A.P. RTE.	SECTION	COUNTY	TOTAL SHEETS	SHEET NO.
301	177-2 (-1A, B-1, VB-1)	STEPHENSON	386	133
STA.	STA.	TO STA.	STA.	
FED. ROAD DIST. NO.	ILLINOIS FED. AID PROJECT			
P-92-029-02			PVMRK-06 OF 07	
CONTRACT #64799				



NOTE:  
 ALL PERMANENT SIGNING SHALL BE FURNISHED AND INSTALLED BY IDOT. THE CONTRACTOR SHALL BE RESPONSIBLE FOR ALL PAVEMENT MARKING WORK AS SHOWN IN THE PLANS.



REVISIONS	
NAME	DATE

ILLINOIS DEPARTMENT OF TRANSPORTATION  
 F.A.P. ROUTE 301 (US RTE. 20)  
 FROM BOLTON ROAD TO WEST OF IL RTE. 26  
**PAVEMENT MARKING PLANS**  
**FRONTAGE ROAD**  
 SCALE: 1"=50'  
 DATE: 01-22-10  
 DRAWN BY: SJV  
 CHECKED BY: RMH