

STATE OF ILLINOIS
DEPARTMENT OF TRANSPORTATION

ROUTE NO.	SECTION	COUNTY	TOTAL SHEETS	SHEET NO.
FAP 301	177-2	STEPHENSON	386	136
FED. ROAD DIST. NO. 7	ILLINOIS	FED. AID PROJECT-		

Contract No. 64799

GENERAL NOTES

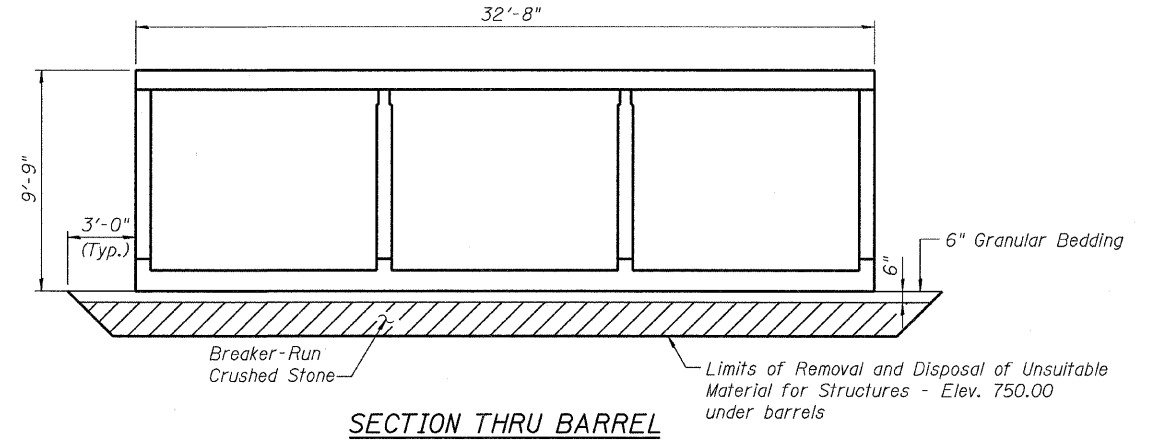
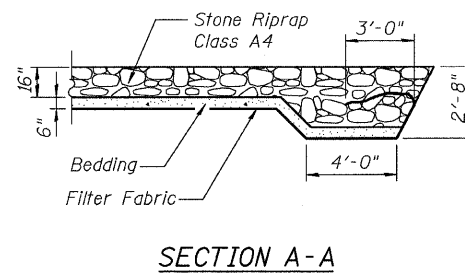
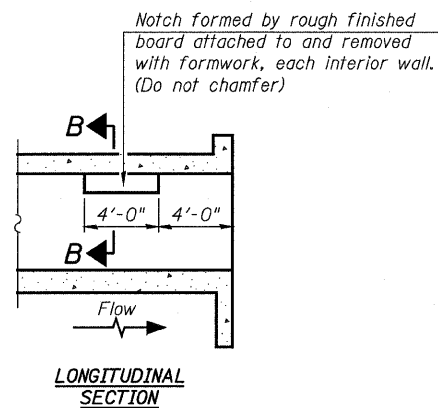
1. The Contractor shall be responsible for diverting the water flow from the construction area using a method meeting the approval of the Engineer. The cost of diverting the water flow shall be considered as included in the contract unit price bid for the box culvert being constructed and no additional compensation will be allowed.
2. Reinforcement bars shall conform to the requirements of ASTM A 706 Grade 60. See Special Provisions.
3. A distance of half the length of the wingwall, but not less than 6'-6" of the barrel shall be poured monolithically with the wingwalls.
4. Layout of slope protection system may be varied to suit ground conditions in the field as directed by the Engineer.
5. Precast alternate is not allowed.
6. All construction joints shall be bonded.

SHEET INDEX

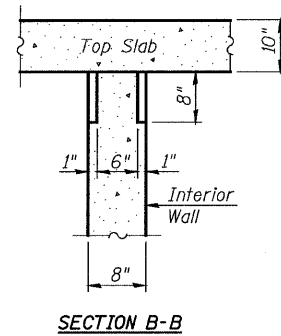
- 1 General Plan
- 2 General Data
- 3-4 Culvert Details
- 5 Boring Logs

TOTAL BILL OF MATERIAL

ITEM	UNIT	TOTAL
Removal and Disposal of Unsuitable Material for Structures	Cu. Yd.	282
Stone Riprap, Class A4	Sq. Yd.	139
Filter Fabric	Sq. Yd.	139
Reinforcement Bars	Pound	52,500
Name Plates	Each	1
Concrete Box Culverts	Cu. Yd.	257
Breaker-Run Crushed Stone	Ton	194



The limits and quantities of removal and disposal are based on the boring data and may be modified by the District Geotechnical and Field Engineers for variable subsurface encountered in the field.



**PHOEBE NESTING
SITE DETAILS**
(Downstream End Only)

STATION 103+72.00
BUILT BY
STATE OF ILLINOIS
F.A.P. RT. 301 SEC. 177-2-1A
LOADING HS20-44
STR. NO. 089-2018

NAME PLATE
See Std. 515001

DESIGNED	B. GILHOUSEN
CHECKED	S. GAGE
DRAWN	N. LINT
CHECKED	B. GILHOUSEN

GENERAL DATA
F.A.P. ROUTE 301 SECTION 177-2-1A
STEPHENSON COUNTY
STATION 103+72.00
STRUCTURE NO. 089-2018

