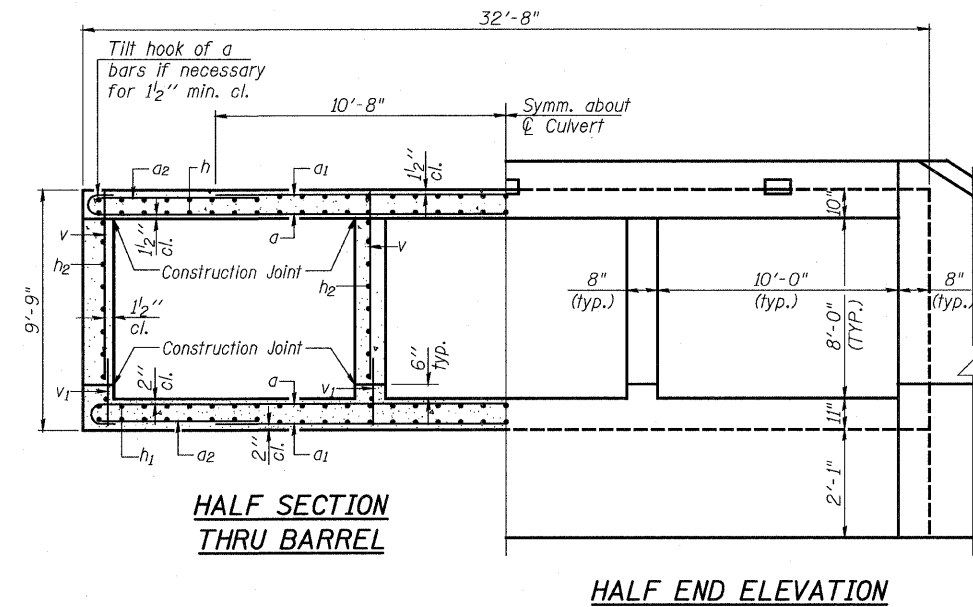
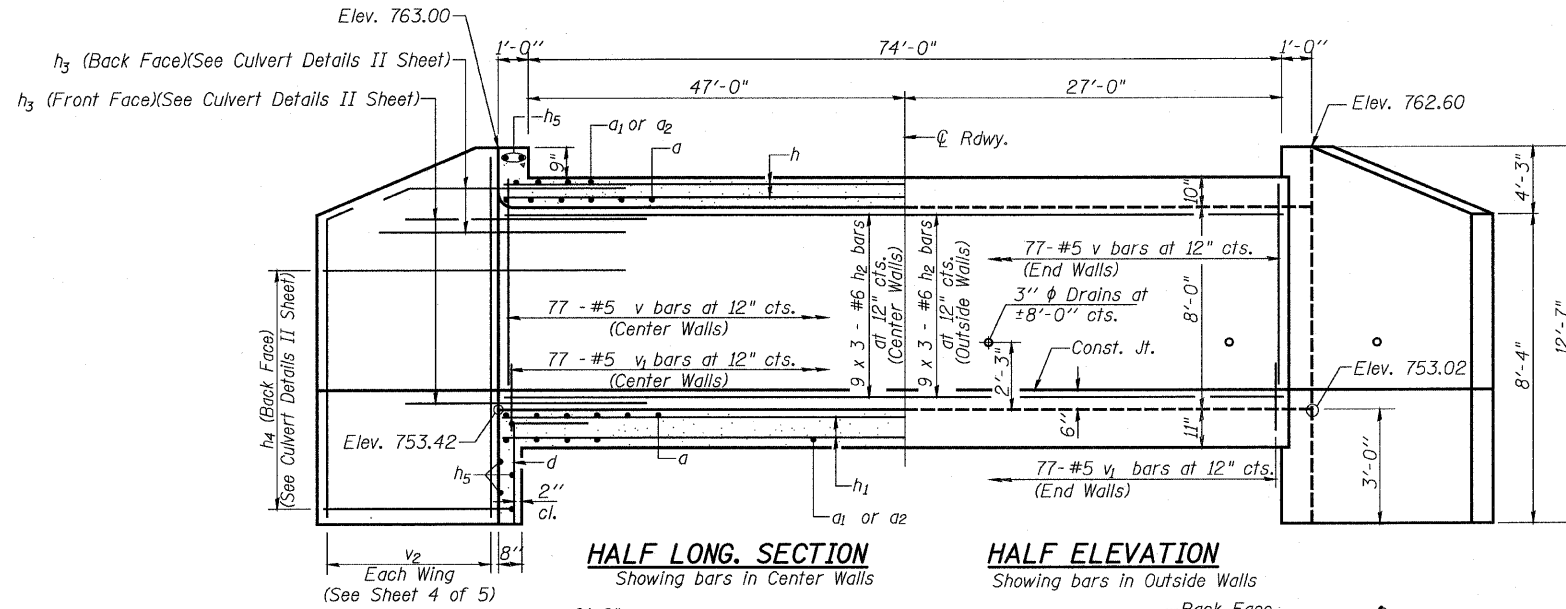


STATE OF ILLINOIS
DEPARTMENT OF TRANSPORTATION

ROUTE NO.	SECTION	COUNTY	TOTAL SHEETS	SHEET NO.
FAP 301	177-2	STEPHENSON	386	137
FED. ROAD DIST. NO. 7	ILLINOIS	FED. AID PROJECT-		

Contract No. 64799

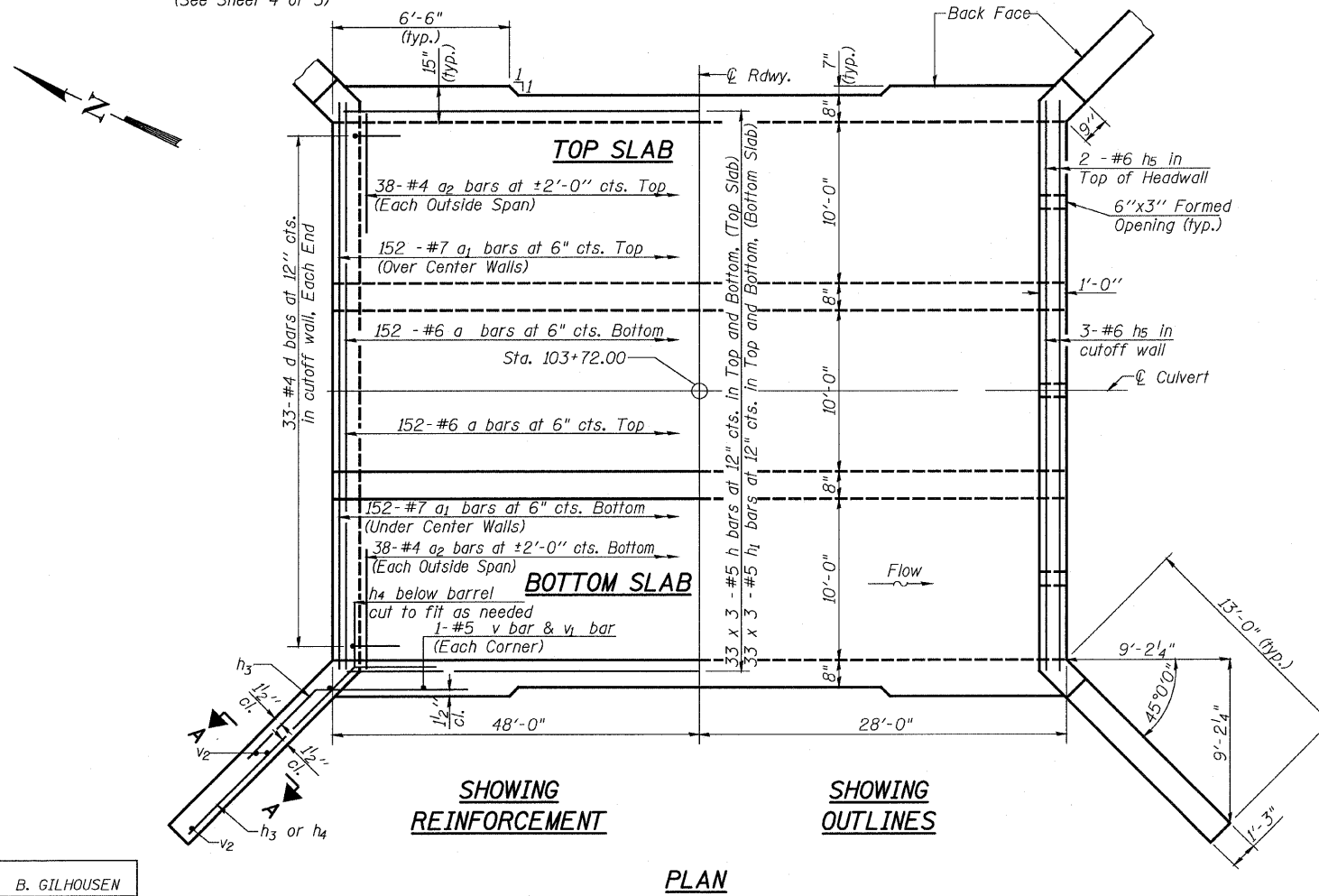


Notes:

1. Bars indicated thus 9x3-#5 etc. indicates 9 lines of bars with 3 lengths per line.
2. For Section A-A, see Sheet 4 of 5.

MIN. BAR LAP FOR BARREL

#4 Bars	= 1'-4"
#5 Bars	= 1'-8"
#6 Bars	= 2'-0"



DESIGNED	B. GILHOUSEN
CHECKED	S. GAGE
DRAWN	N. LINT
CHECKED	B. GILHOUSEN

CULVERT DETAILS I
F.A.P. ROUTE 301 SECTION 177-2-1A
STEPHENSON COUNTY
STATION 103+72.00
STRUCTURE NO. 089-2018

