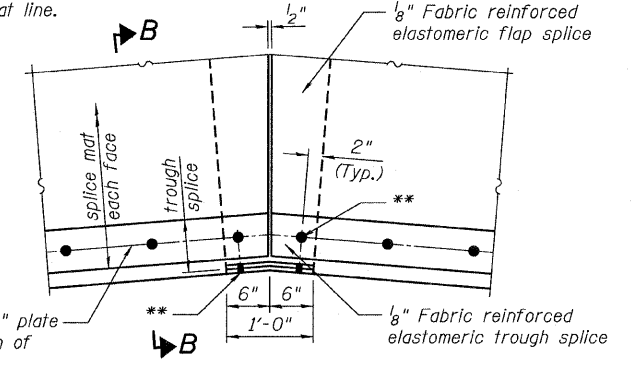
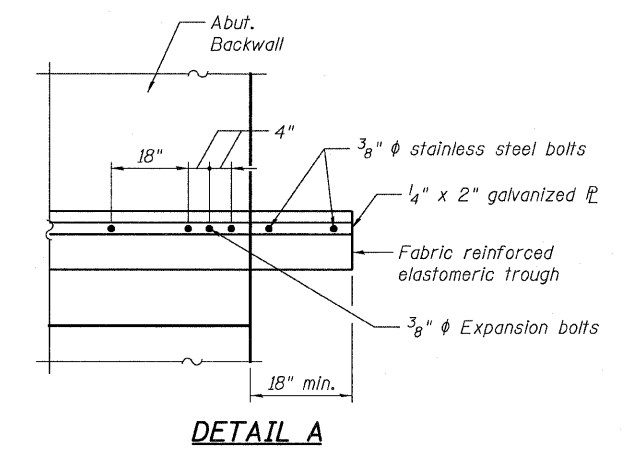
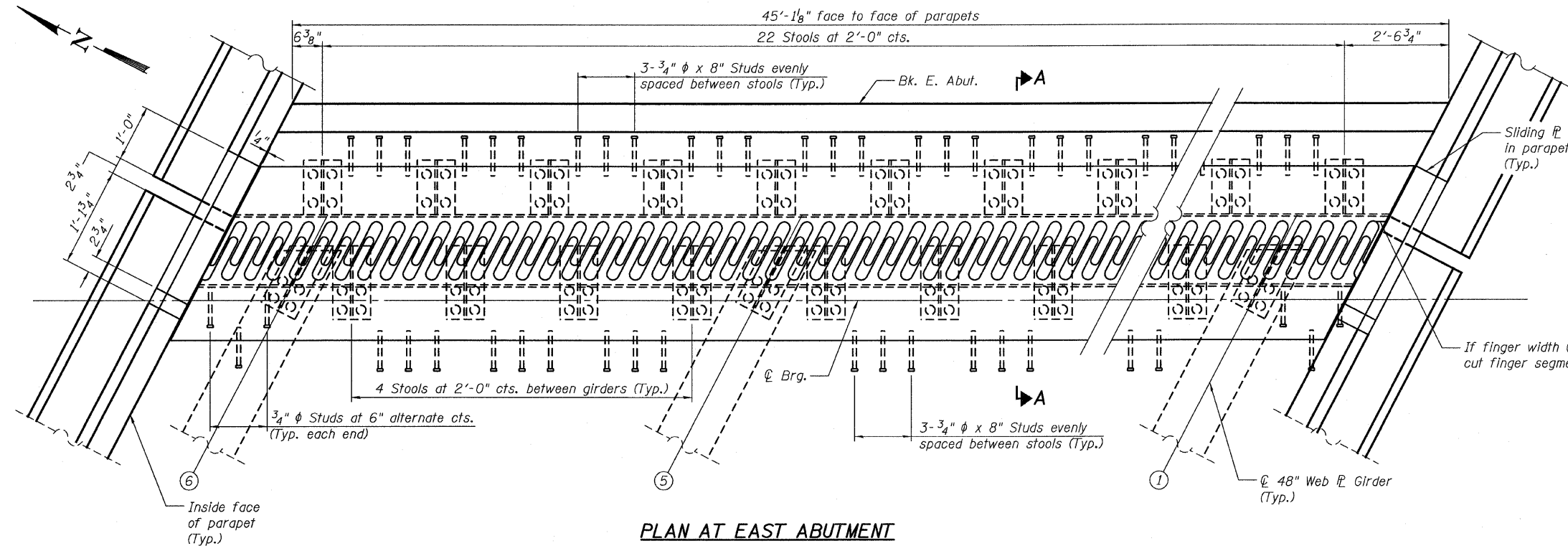


STATE OF ILLINOIS
DEPARTMENT OF TRANSPORTATION

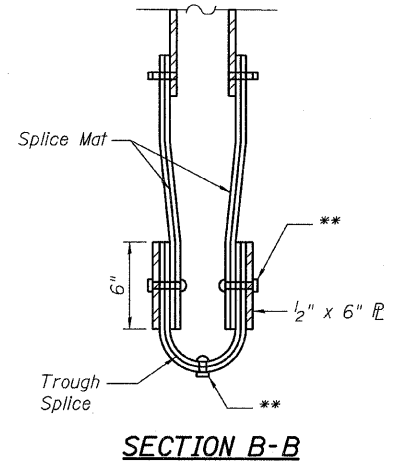
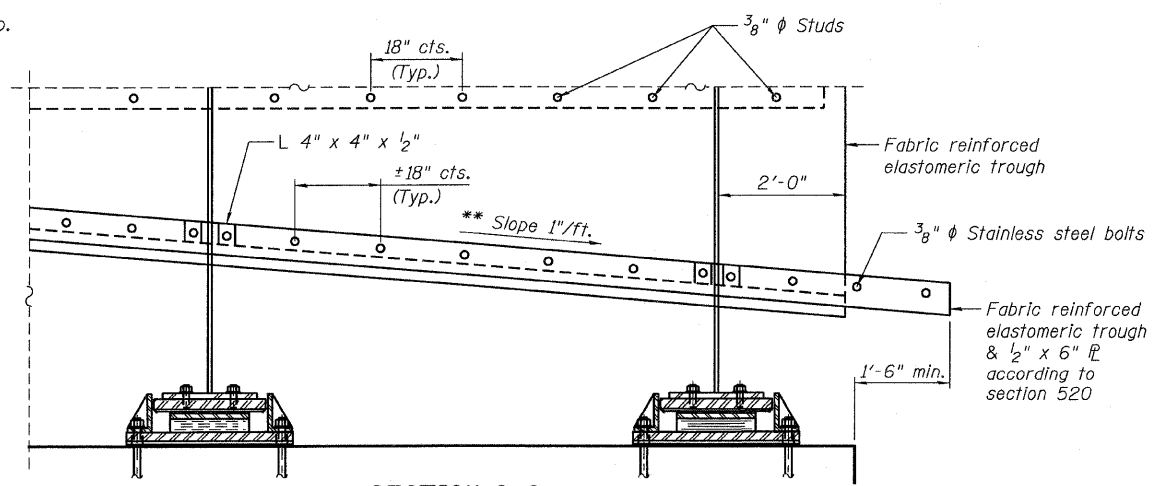
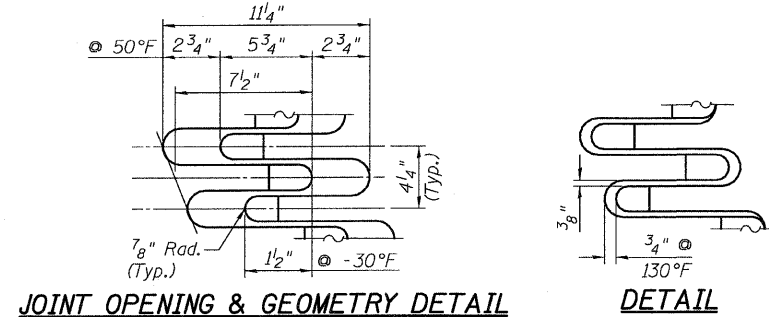
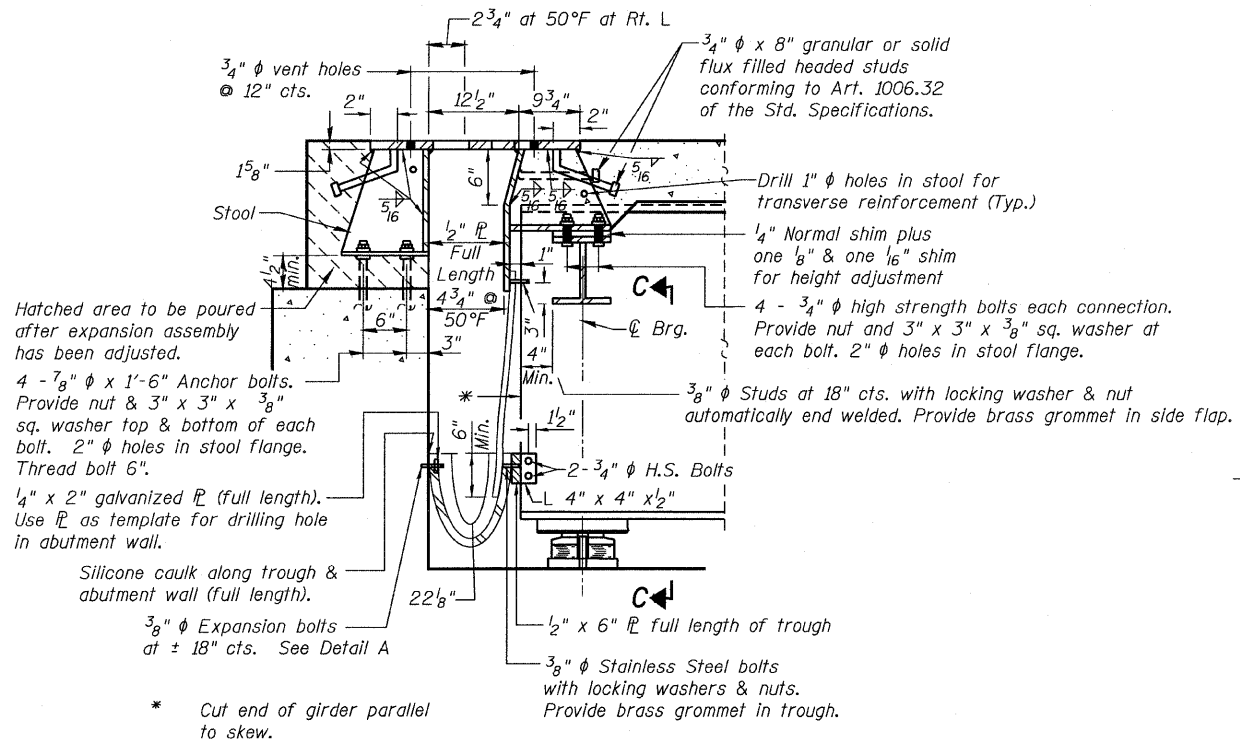
ROUTE NO.	SECTION	COUNTY	TOTAL SHEETS	SHEET NO.	SHEET NO. 20
FAP 301	177-2	STEPHENSON	386	160	47 SHEETS
FED. ROAD DIST. NO. 7	ILLINOIS	FED. AID PROJECT-			

Contract No. 64799



TROUGH SPLICE DETAIL

** 3/8" φ Stainless Steel bolts with washers & nuts. Provide brass grommet in trough.



EXPANSION JOINT AT EAST ABUTMENT (DETAILS 1)
F.A.P. ROUTE 301 SECTION 177-2B-1
STEPHENSON COUNTY
STATION 540+65.71
STRUCTURE NO. 089-0082



** Min. slope 5/8"/ft.

DESIGNED	S.CHELBIAN
CHECKED	J.BRISBOIS
DRAWN	S.CHELBIAN
CHECKED	J.GRAINAWI

- Notes:
- All structural steel used for finger plates, stools, and troughs shall be AASHTO M270, Gr. 50.
 - Finger plate expansion joints shall be assembled in their relative final position with the ends in place for shop inspection and acceptance.

T:\16814A\Struct\Cadd\Prefinal\US20 Bridge 089-0082 (Pecatonica River Bridge)\000000-64799-000-020.dgn 25-JAN-2010 13:47