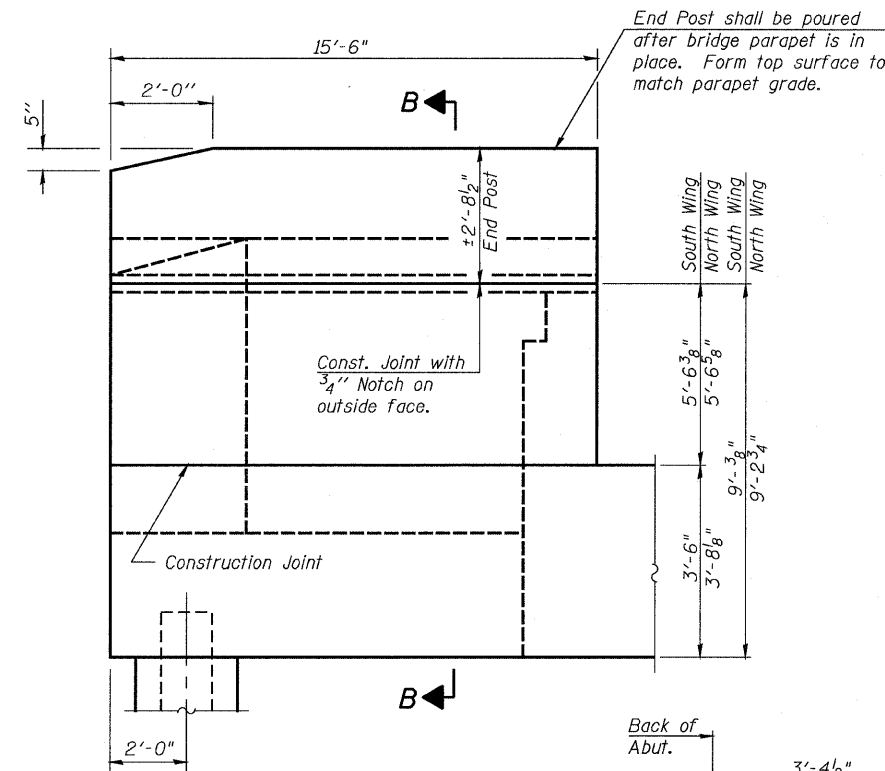


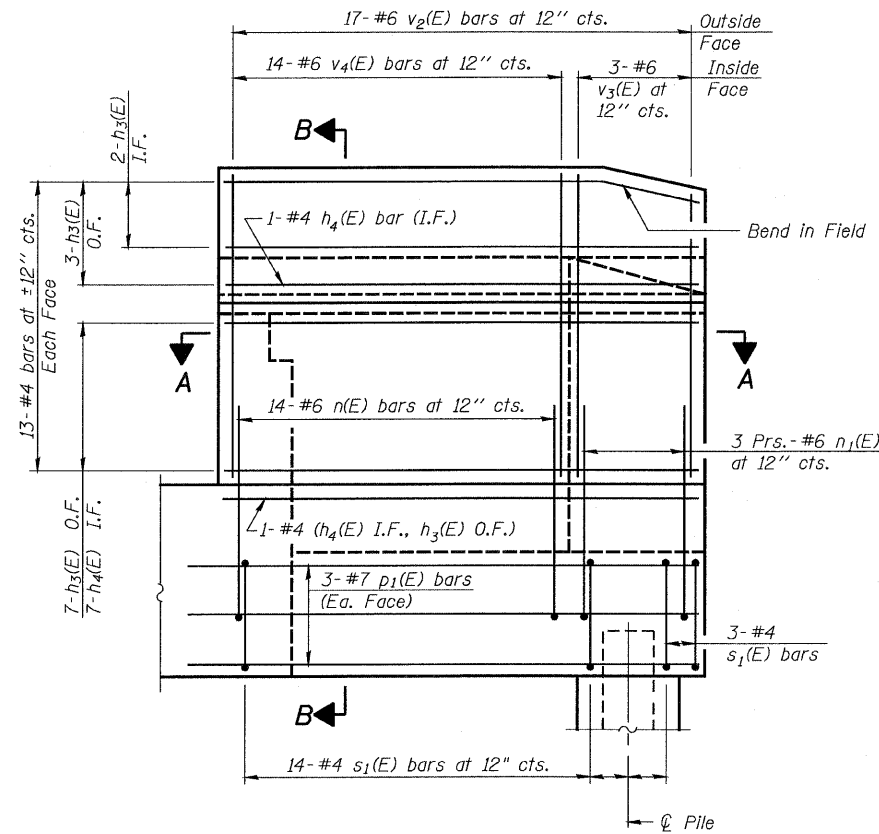
STATE OF ILLINOIS
DEPARTMENT OF TRANSPORTATION

ROUTE NO.	SECTION	COUNTY	TOTAL SHEETS	SHEET NO.
FAP 301	177-2	STEPHENSON	386	173
FED. ROAD DIST. NO. 7	ILLINOIS	FED. AID PROJECT-		

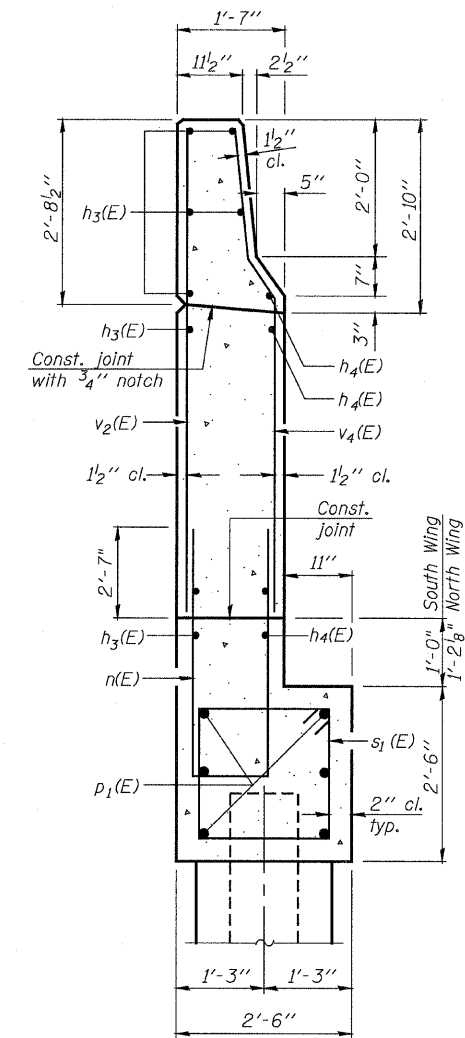
Contract No. 64799



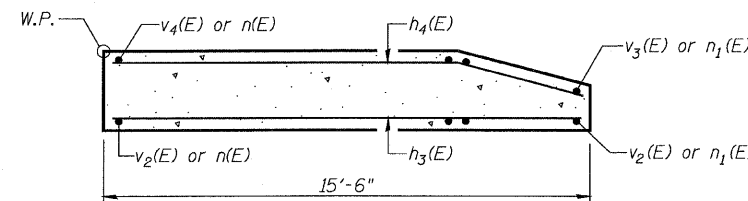
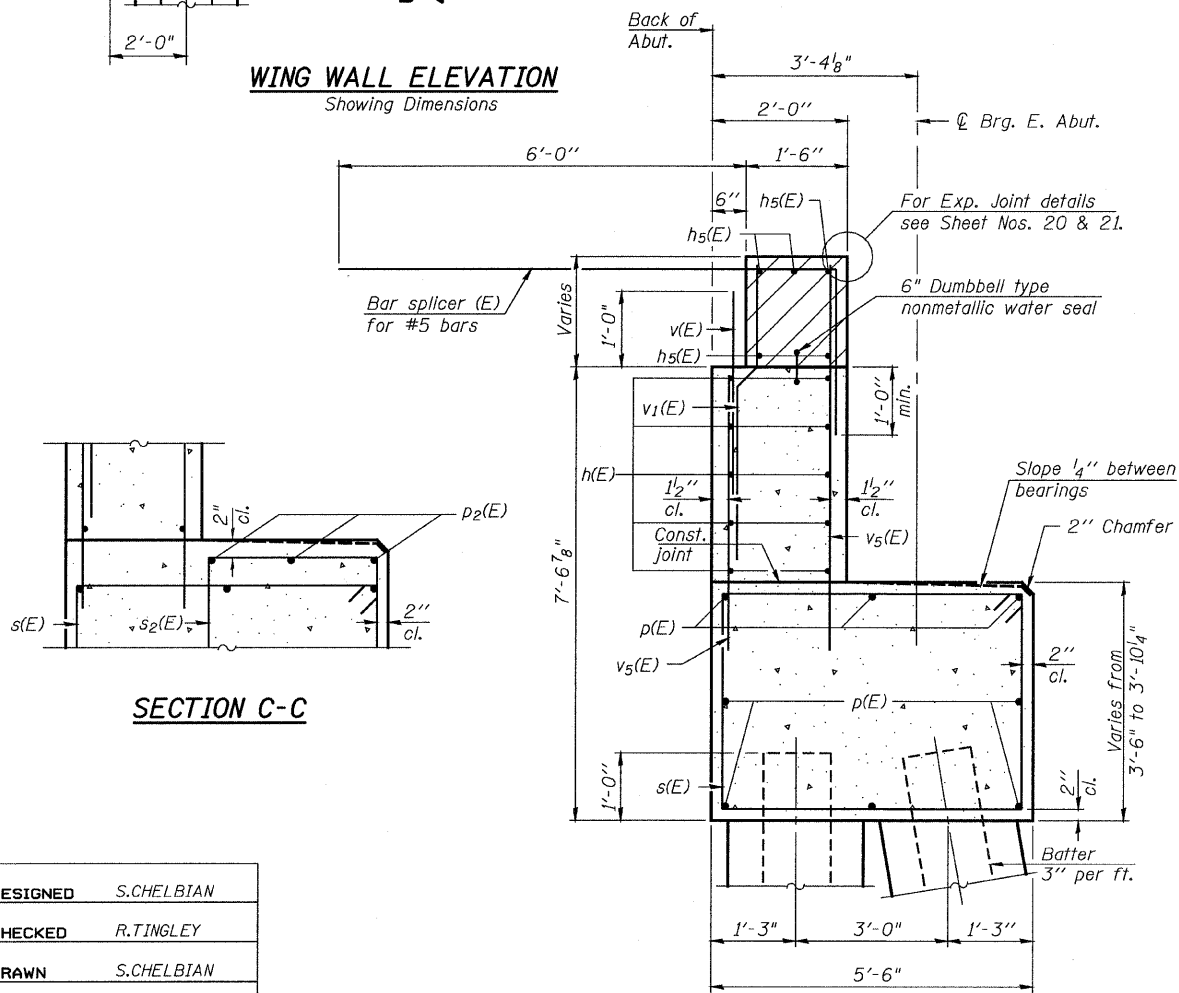
WING WALL ELEVATION
Showing Dimensions



WING WALL ELEVATION
Showing Reinforcement



SECTION B-B



SECTION A-A

Notes:

- Hatched area to be poured after superstructure false work has been removed. Quantity of concrete included with Concrete Superstructure.
- Space reinforcement in cap to miss anchor bolts.
- Pour steps monolithically with cap.
- Quantity of concrete in end post included with Concrete Superstructure on Sheet No. 15.
- For Concrete Encasement details, see Sheet No. 41.

DESIGNED	S.CHELBIAN
CHECKED	R.TINGLEY
DRAWN	S.CHELBIAN
CHECKED	J.GRAINAWI



EAST ABUTMENT DETAILS
F.A.P. ROUTE 301 SECTION 177-2B-1
STEPHENSON COUNTY
STATION 540+65.71
STRUCTURE NO. 089-0082