

STATE OF ILLINOIS  
DEPARTMENT OF TRANSPORTATION

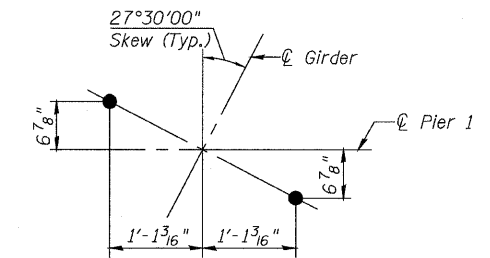
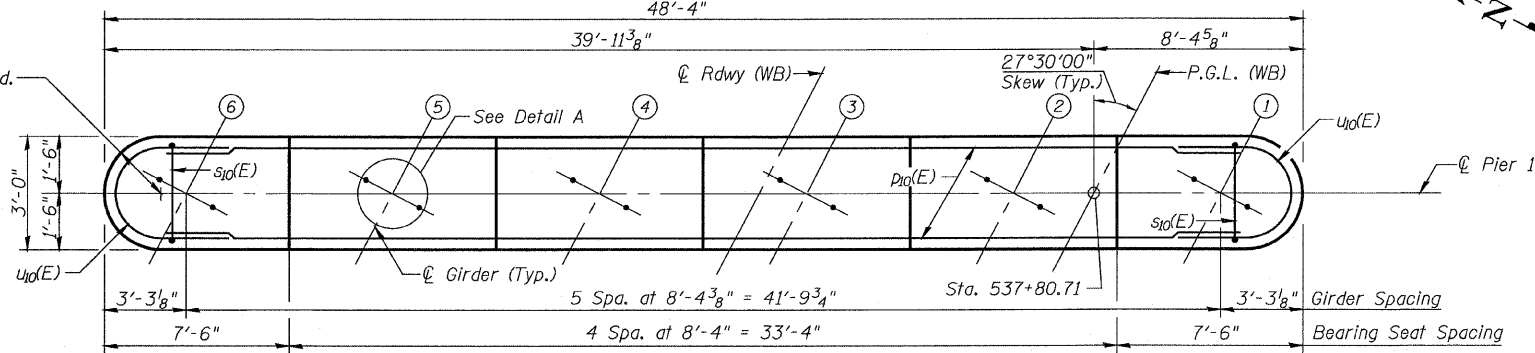
ROUTE NO.	SECTION	COUNTY	TOTAL SHEETS	SHEET NO.
FAP 301	177-2	STEPHENSON	386	174
FED. ROAD DIST. NO. 7		ILLINOIS	FED. AID PROJECT	

SHEET NO. 34  
47 SHEETS

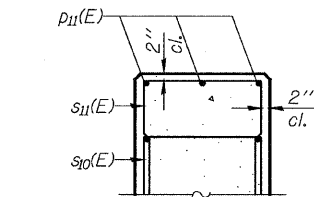
Contract No. 64799

Notes:

- All exposed edges shall have standard  $\frac{3}{4}$ " Chamfers.
- Space reinforcement in cap to miss anchor bolts.
- Pour steps monolithically with cap.
- If a portion of the pier wall or concrete encasement is under water, reinforcement may be placed underwater into forms. Concrete shall be tremled according to Article 503.08 of the Standard Specifications to an elevation of 1'-0" above the water line at the time of construction.
- For details of piles, see Sheet No. 41.



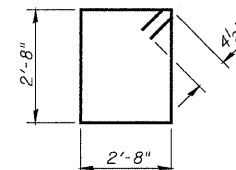
DETAIL A



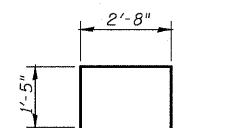
SECTION A-A

TOP PLAN

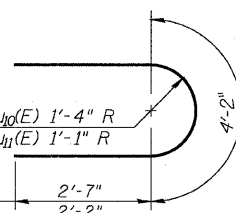
BAR n10(E)



BAR s10(E)



BAR s11(E)



BARS u10(E) & u11(E)

MINIMUM BAR LAP

- #5 bar = 2'-2"
- #6 bar = 2'-7"
- #7 bar = 3'-5"

BILL OF MATERIAL

Bar	No.	Size	Length	Shape
h10(E)	36	#5	23'-9"	—
n10(E)	158	#7	6'-9"	U
p10(E)	8	#7	45'-4"	—
p11(E)	3	#4	16'-4"	—
s10(E)	46	#4	11'-5"	□
s11(E)	18	#4	5'-6"	□
t10(E)	66	#6	8'-2"	—
u10(E)	6	#6	9'-4"	U
u11(E)	18	#5	7'-9"	U
v10(E)	158	#7	11'-0"	—
w10(E)	16	#5	26'-0"	—
Structure Excavation		Cu. Yd.	100	
Concrete Structures		Cu. Yd.	96.5	
Reinforcement Bars, Epoxy Coated		Pound	9,290	
Furnishing Steel Piles, HP 12x53		Foot	1,000	
Driving Piles		Foot	1,000	
Test Pile, HP 12x53		Each	1	
Pile Shoes		Each	20	

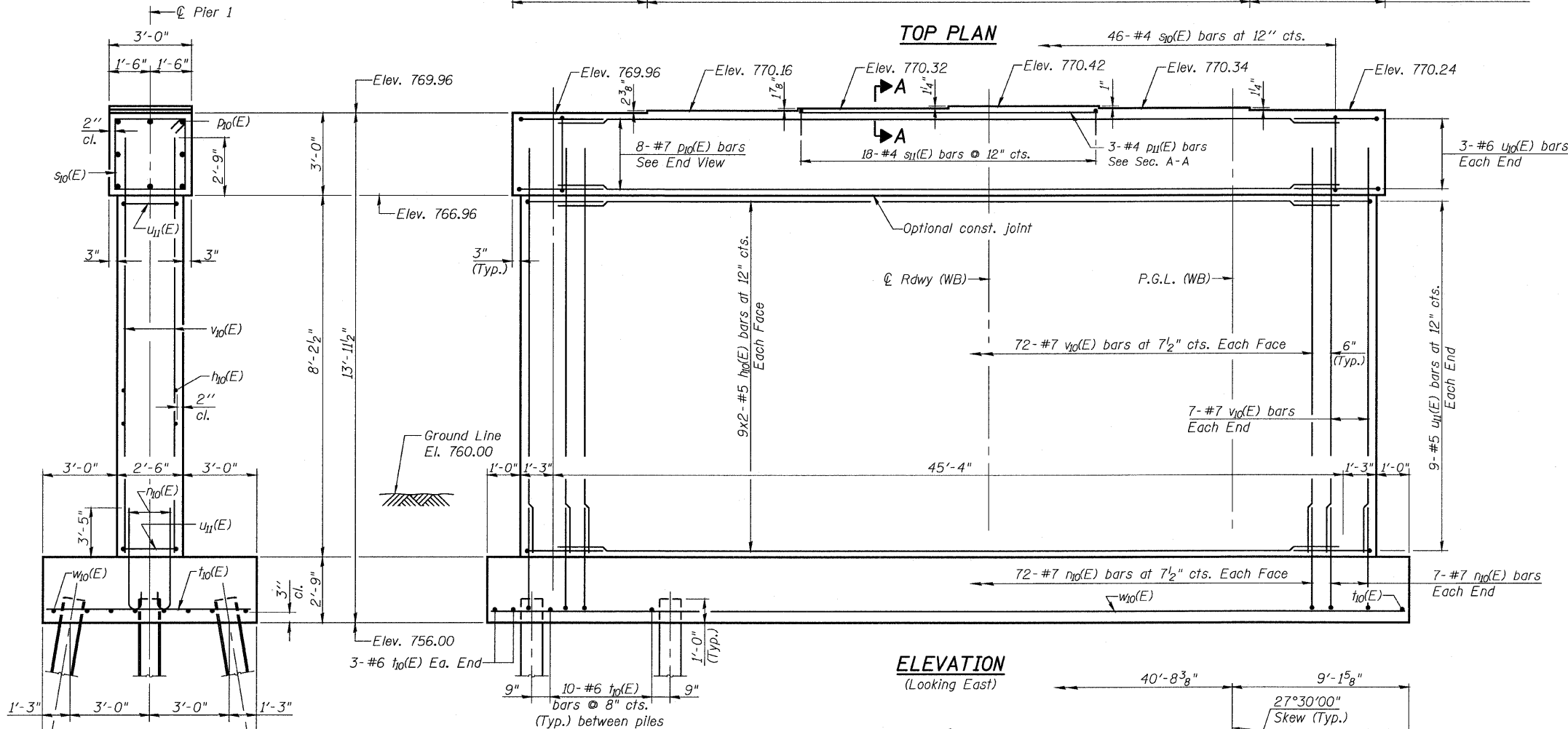
PILE DATA

Type: Steel HP 12x53 w/Pile Shoes  
Nominal Required Bearing: 419 kips  
Factored Resistance Available: 120 kips  
Est. Length: 50 Ft.  
No. Production Piles: 20  
No. Test Piles: 1

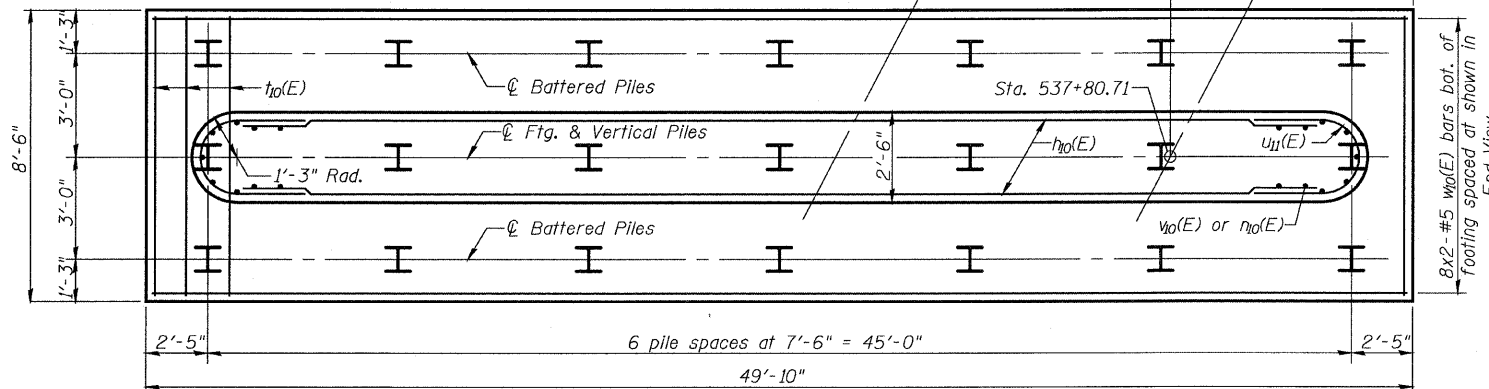
PIER NO. 1

F.A.P. ROUTE 301 SECTION 177-2B-1  
STEPHENSON COUNTY  
STATION 540+65.71  
STRUCTURE NO. 089-0082

ELEVATION  
(Looking East)



FOOTING PLAN



DESIGNED	S.CHELBIAN
CHECKED	R.TINGLEY
DRAWN	D.C.PATEL
CHECKED	J.GRAINAWI

