

Notes:

- All exposed edges shall have standard 3/4" Chamfers.
- Space reinforcement in cap to miss anchor bolts.
- Four steps monolithically with cap.
- For details of piles, see Sheet No. 41.

PILE DATA

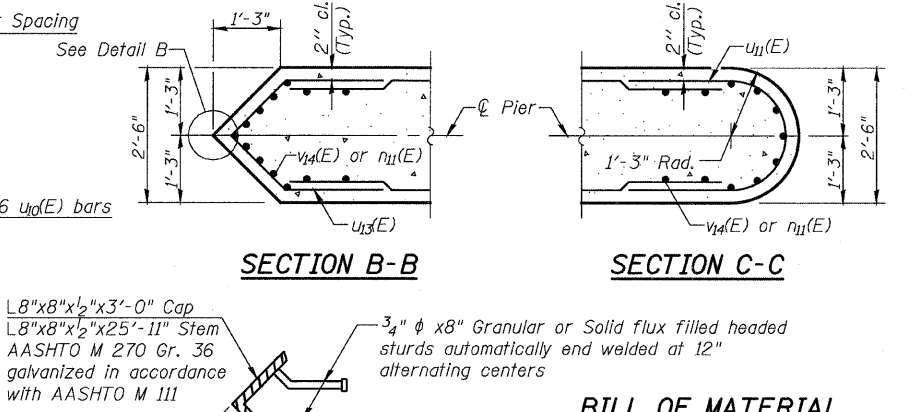
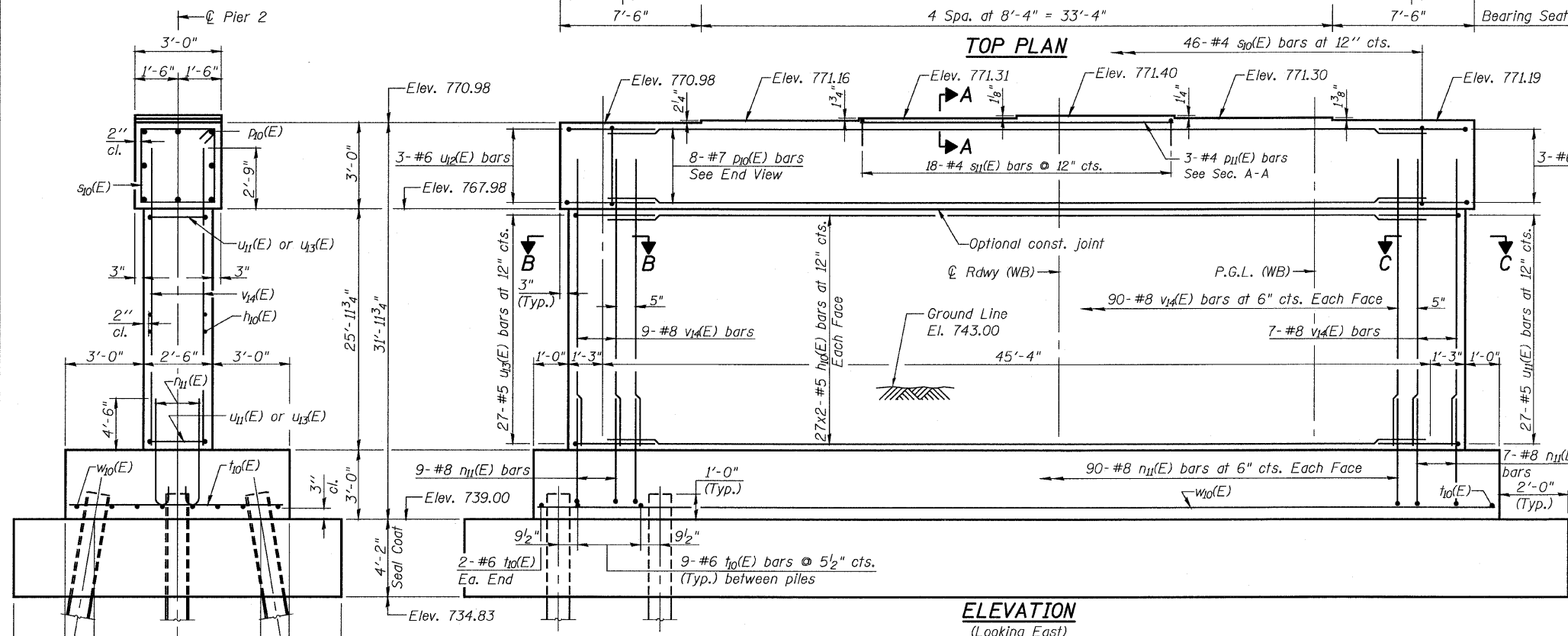
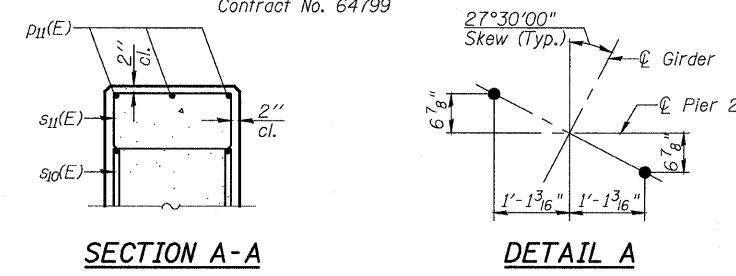
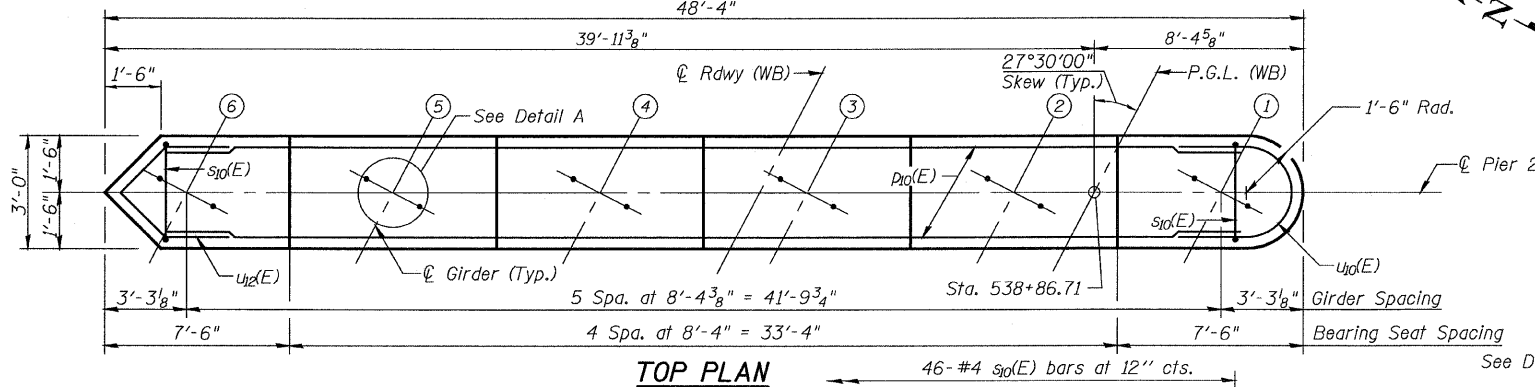
Type: Steel HP 12x53 w/Pile Shoes
 Nominal Required Bearing: 419 kips
 Factored Resistance Available: 120 kips
 Est. Length: 50 Ft.
 No. Production Piles: 29
 No. Test Piles: 1

STATE OF ILLINOIS
 DEPARTMENT OF TRANSPORTATION

ROUTE NO.	SECTION	COUNTY	TOTAL SHEETS	SHEET NO.
FAP 301	177-2	STEPHENSON	386	175
FED. ROAD DIST. NO. 7		ILLINOIS		FED. AID PROJECT-

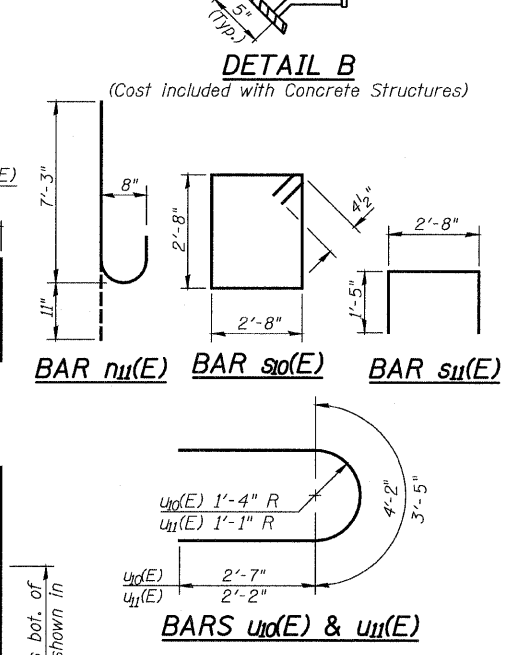
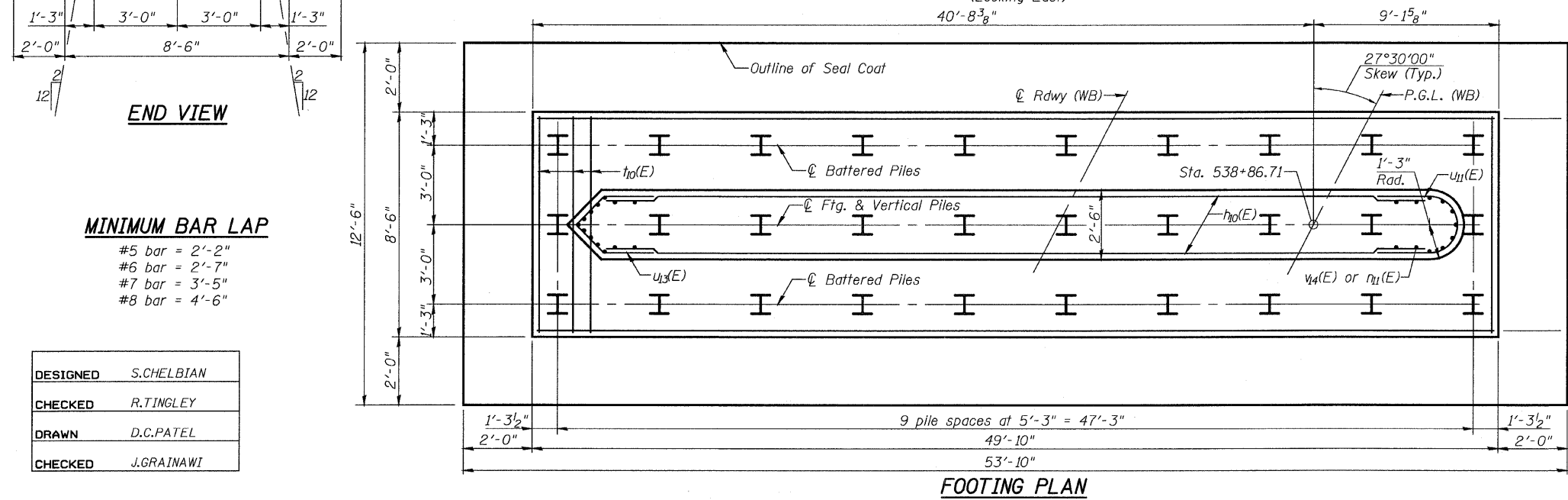
SHEET NO. 35
 47 SHEETS

Contract No. 64799



BILL OF MATERIAL

Bar	No.	Size	Length	Shape
h10(E)	108	#5	23'-9"	—
n11(E)	196	#8	8'-2"	U
p10(E)	8	#7	45'-4"	—
p11(E)	3	#4	16'-4"	—
s10(E)	46	#4	11'-5"	□
s11(E)	18	#4	5'-6"	□
t10(E)	85	#6	8'-2"	—
u10(E)	3	#6	9'-4"	U
u11(E)	27	#5	7'-9"	U
u12(E)	3	#6	8'-11"	U
u13(E)	27	#5	7'-5"	U
v14(E)	196	#8	28'-9"	—
w10(E)	16	#5	26'-0"	—
Concrete Structures		Cu. Yd.	177.1	
Reinforcement Bars, Epoxy Coated		Pound	25,180	
Furnishing Steel Piles, HP 12x53		Foot	1,450	
Driving Piles		Foot	1,450	
Test Pile, HP 12x53		Each	1	
Pile Shoes		Each	29	
Seal Coat Concrete		Cu. Yd.	103.9	



MINIMUM BAR LAP

- #5 bar = 2'-2"
- #6 bar = 2'-7"
- #7 bar = 3'-5"
- #8 bar = 4'-6"

DESIGNED	S.CHELBIAN
CHECKED	R.TINGLEY
DRAWN	D.C.PATEL
CHECKED	J.GRAINAWI



PIER NO. 2
F.A.P. ROUTE 301 SECTION 177-2B-1
STEPHENSON COUNTY
STATION 540+65.71
STRUCTURE NO. 089-0082

T:\16814A\Struct\Cadd\Prefinal\US20 Bridge 089-0082 (Pecatonica River Bridge)\000000-64799-000-000-035.dgn
 25-JAN-2010 13:47