

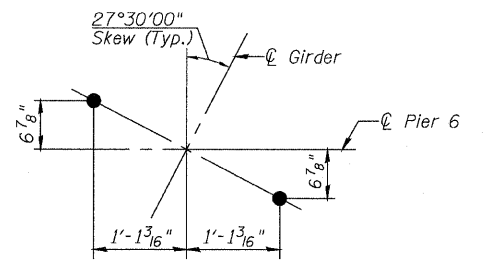
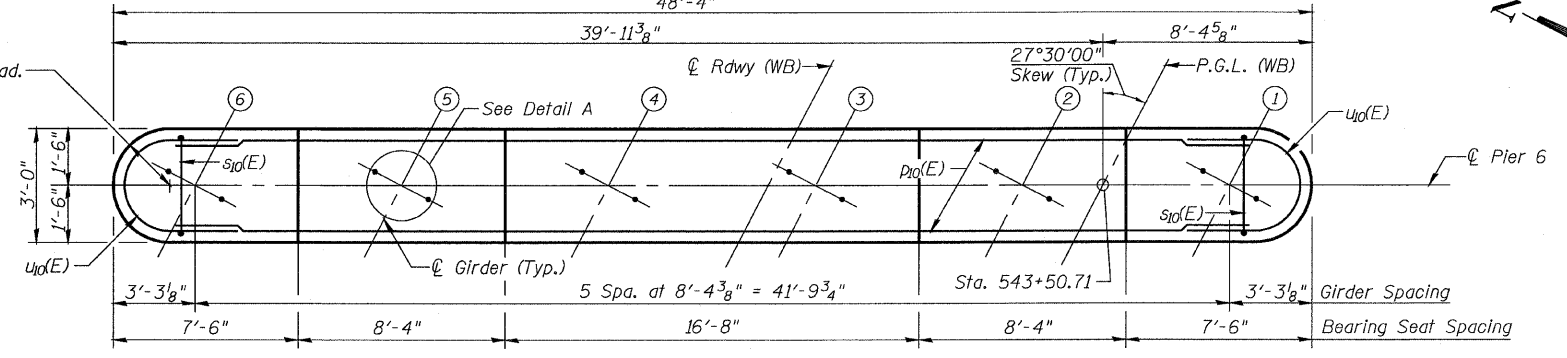
STATE OF ILLINOIS
DEPARTMENT OF TRANSPORTATION

ROUTE NO.	SECTION	COUNTY	TOTAL SHEETS	SHEET NO.
FAP 301	177-2	STEPHENSON	386	179
FED. ROAD DIST. NO. 7	ILLINOIS	FED. AID PROJECT-		

SHEET NO. 39
47 SHEETS

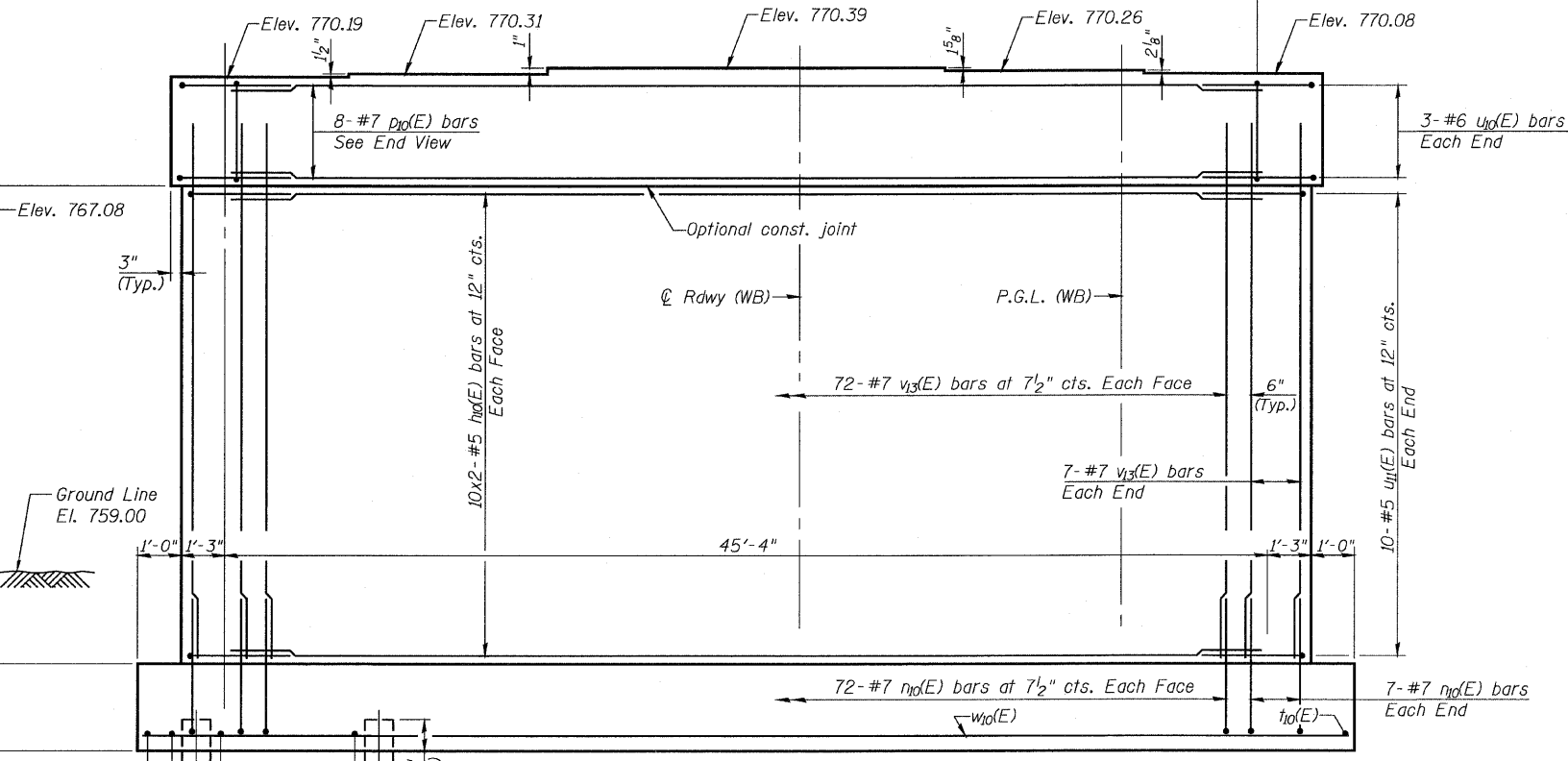
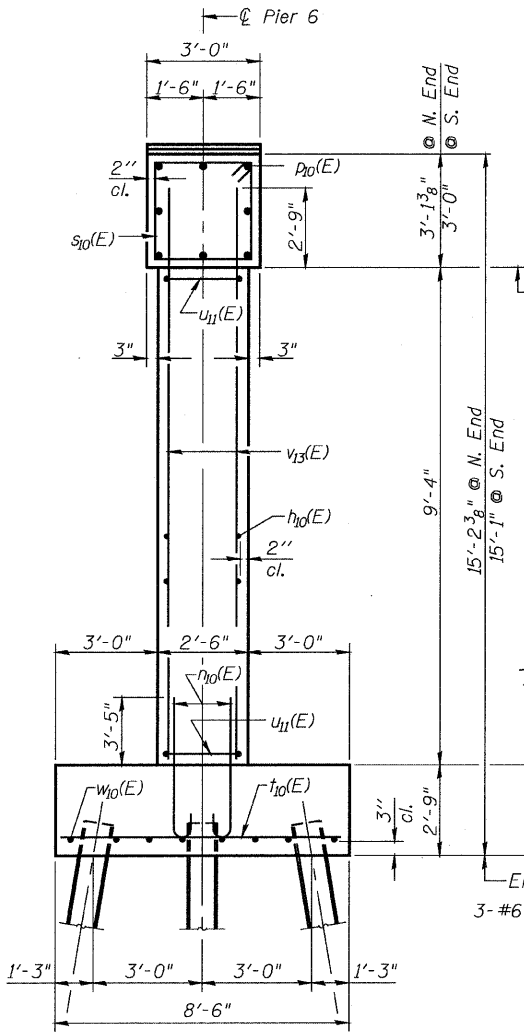
Contract No. 64799

- Notes:
- All exposed edges shall have standard $\frac{3}{4}$ " Chamfers.
 - Space reinforcement in cap to miss anchor bolts.
 - Pour steps monolithically with cap.
 - If a portion of the pier wall or concrete encasement is under water, reinforcement may be placed underwater into forms. Concrete shall be tremied according to Article 503.08 of the Standard Specifications to an elevation of 1'-0" above the water line at the time of construction.
 - For details of piles, see Sheet No. 41.

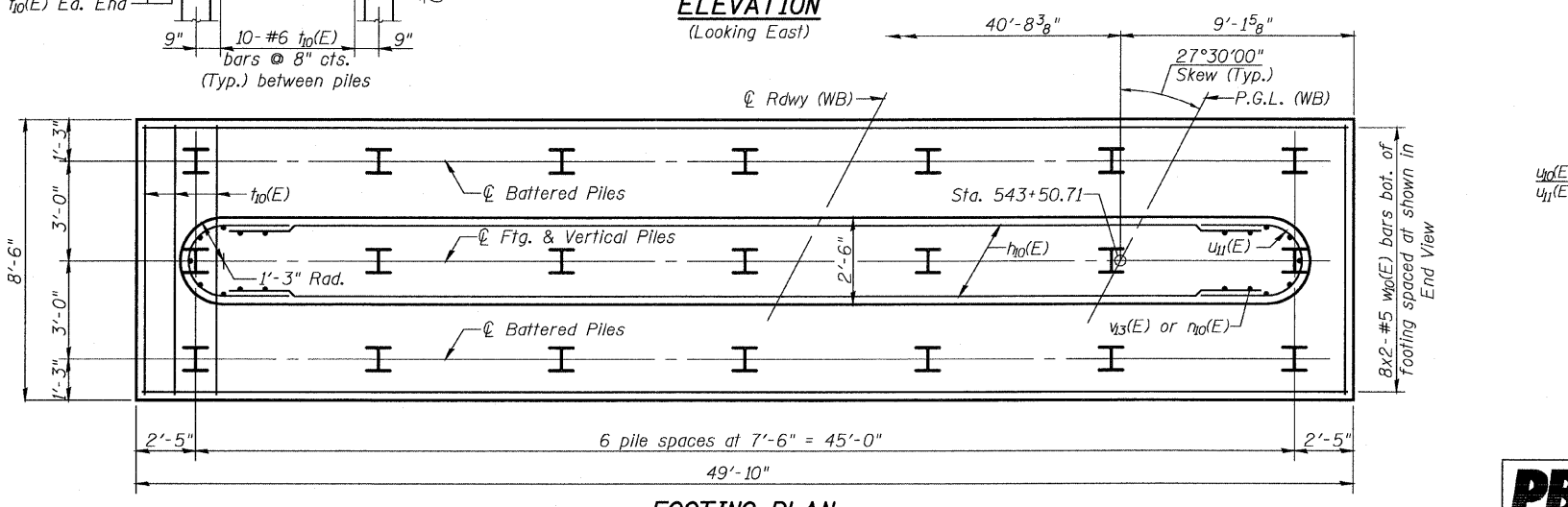


TOP PLAN

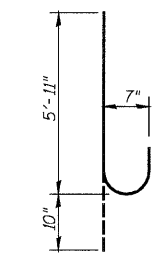
DETAIL A



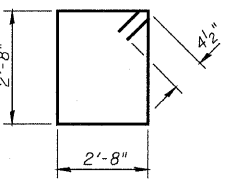
ELEVATION
(Looking East)



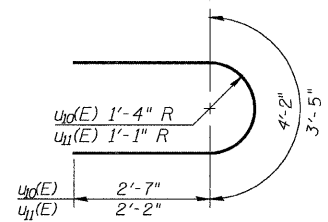
FOOTING PLAN



BAR n10(E)



BAR s10(E)



BARS u10(E) & u11(E)

MINIMUM BAR LAP

- #5 bar = 2'-2"
- #6 bar = 2'-7"
- #7 bar = 3'-5"

BILL OF MATERIAL

Bar	No.	Size	Length	Shape
h10(E)	40	#5	23'-9"	—
n10(E)	158	#7	6'-9"	—
p10(E)	8	#7	45'-4"	—
s10(E)	46	#4	11'-5"	□
t10(E)	66	#6	8'-2"	—
u10(E)	6	#6	9'-4"	U
u11(E)	20	#5	7'-9"	U
v13(E)	158	#7	12'-1"	—
w10(E)	16	#5	26'-0"	—
Structure Excavation			Cu. Yd.	100
Concrete Structures			Cu. Yd.	101.0
Reinforcement Bars, Epoxy Coated			Pound	9,660
Furnishing Steel Piles, HP 12x53			Foot	1,200
Driving Piles			Foot	1,200
Test Pile, HP 12x53			Each	1
Pile Shoes			Each	20

PILE DATA

Type: Steel HP 12x53 w/Pile Shoes
Nominal Required Bearing: 419 kips
Factored Resistance Available: 120 kips
Est. Length: 60 Ft.
No. Production Piles: 20
No. Test Piles: 1

PIER NO. 6

F.A.P. ROUTE 301 SECTION 177-2B-1
STEPHENSON COUNTY
STATION 540+65.71
STRUCTURE NO. 089-0082



DESIGNED	S.CHELBIAN
CHECKED	R.TINGLEY
DRAWN	D.C.PATEL
CHECKED	J.GRAINAWI

T:\16814A\StructCadd\Prefinal\US20 Bridge 089-0082 (Pecatonica River Bridge)\000000-64799-000-039.dgn
25-JAN-2010 13:48