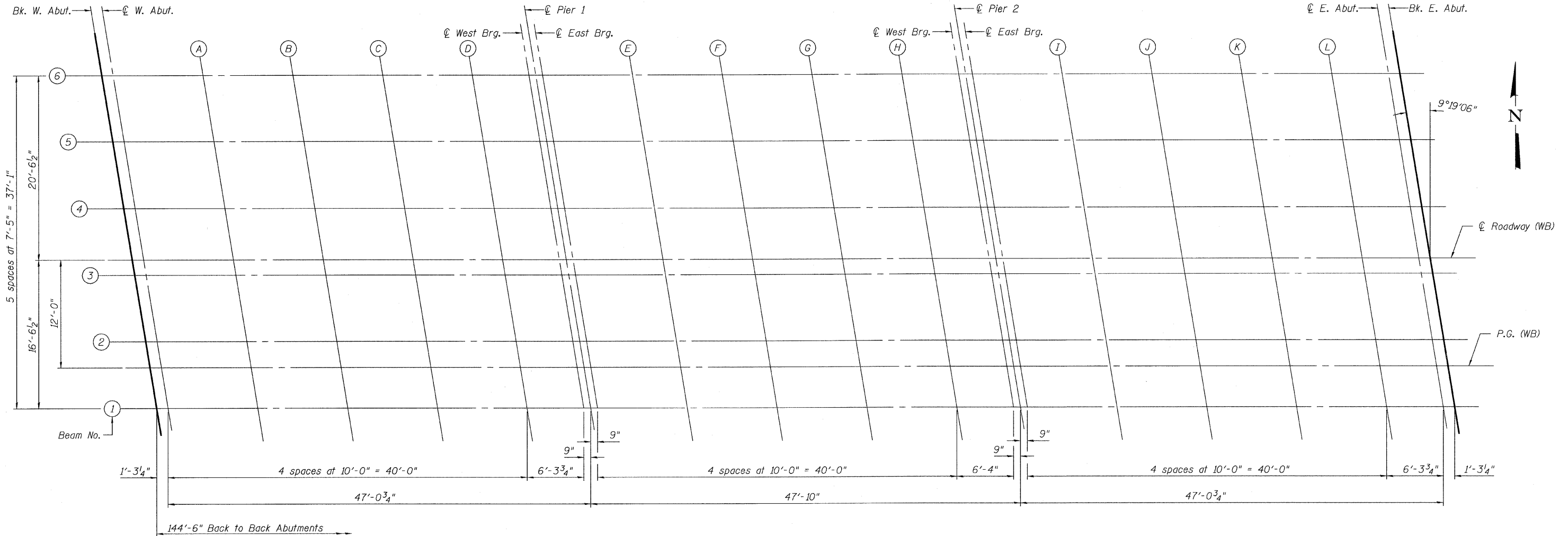


STATE OF ILLINOIS
DEPARTMENT OF TRANSPORTATION

ROUTE NO.	SECTION	COUNTY	TOTAL SHEETS	SHEET NO.
FAP 301	177-2	STEPHENSON	386	190
FED. ROAD DIST. NO. 7		ILLINOIS	FED. AID PROJECT-	

SHEET NO. 3
24 SHEETS

Contract No. 64799



PLAN

BEAM 1

Location	Station	Offset	Theoretical Grade Elevations	Theoretical Grade Elevations Adjusted For Dead Load Deflection
Bk. W. Abut.	569+18.02	4.54	791.76	791.76
☉ Brg. W. Abut.	569+19.28	4.54	791.78	791.78
A	569+29.28	4.54	791.95	791.97
B	569+39.28	4.54	792.12	792.15
C	569+49.28	4.54	792.28	792.31
D	569+59.28	4.54	792.45	792.46
☉ W. Brg. Pier 1	569+65.60	4.54	792.55	792.55
☉ Pier 1	569+66.35	4.54	792.56	792.56
☉ E. Brg. Pier 1	569+67.10	4.54	792.58	792.58
E	569+77.10	4.54	792.74	792.75
F	569+87.10	4.54	792.89	792.92
G	569+97.10	4.54	793.05	793.08
H	570+07.10	4.54	793.20	793.22
☉ W. Brg. Pier 2	570+13.43	4.54	793.30	793.30
☉ Pier 2	570+14.18	4.54	793.31	793.31
☉ E. Brg. Pier 2	570+14.93	4.54	793.32	793.32
I	570+24.93	4.54	793.47	793.48
J	570+34.93	4.54	793.61	793.64
K	570+44.93	4.54	793.75	793.78
L	570+54.93	4.54	793.90	793.91
☉ Brg. E. Abut.	570+61.25	4.54	793.98	793.98
Bk. E. Abut.	570+62.52	4.54	794.00	794.00

P.G.L. (WB)

Location	Station	Offset	Theoretical Grade Elevations	Theoretical Grade Elevations Adjusted For Dead Load Deflection
Bk. W. Abut.	569+17.27	0.00	791.84	791.84
☉ Brg. W. Abut.	569+18.54	0.00	791.86	791.86
A	569+28.54	0.00	792.03	792.05
B	569+38.54	0.00	792.20	792.23
C	569+48.54	0.00	792.37	792.39
D	569+58.54	0.00	792.53	792.54
☉ W. Brg. Pier 1	569+64.85	0.00	792.63	792.63
☉ Pier 1	569+65.60	0.00	792.65	792.65
☉ E. Brg. Pier 1	569+66.35	0.00	792.66	792.66
E	569+76.35	0.00	792.82	792.84
F	569+86.35	0.00	792.98	793.01
G	569+96.35	0.00	793.13	793.16
H	570+06.35	0.00	793.28	793.30
☉ W. Brg. Pier 2	570+12.69	0.00	793.38	793.38
☉ Pier 2	570+13.44	0.00	793.39	793.39
☉ E. Brg. Pier 2	570+14.19	0.00	793.40	793.40
I	570+24.19	0.00	793.55	793.57
J	570+34.19	0.00	793.70	793.72
K	570+44.19	0.00	793.84	793.86
L	570+54.19	0.00	793.98	793.99
☉ Brg. E. Abut.	570+60.50	0.00	794.07	794.07
Bk. E. Abut.	570+61.77	0.00	794.08	794.08

DESIGNED	M.SHAIKH
CHECKED	Z. MORILLO
DRAWN	D.C.PATEL
CHECKED	J.GRAINAWI

TOP OF SLAB ELEVATIONS
F.A.P. ROUTE 301 SECTION 177-2VB-1
STEPHENSON COUNTY
STATION 569+87.29
STRUCTURE NO. 089-0083



T:\168144\Struct\Lead\PreFinal\US20 Bridge 089-0083 (Jane Addams Trail Bridge)\000000-64799-000-000-003.dgn 25-JAN-2010 14:25