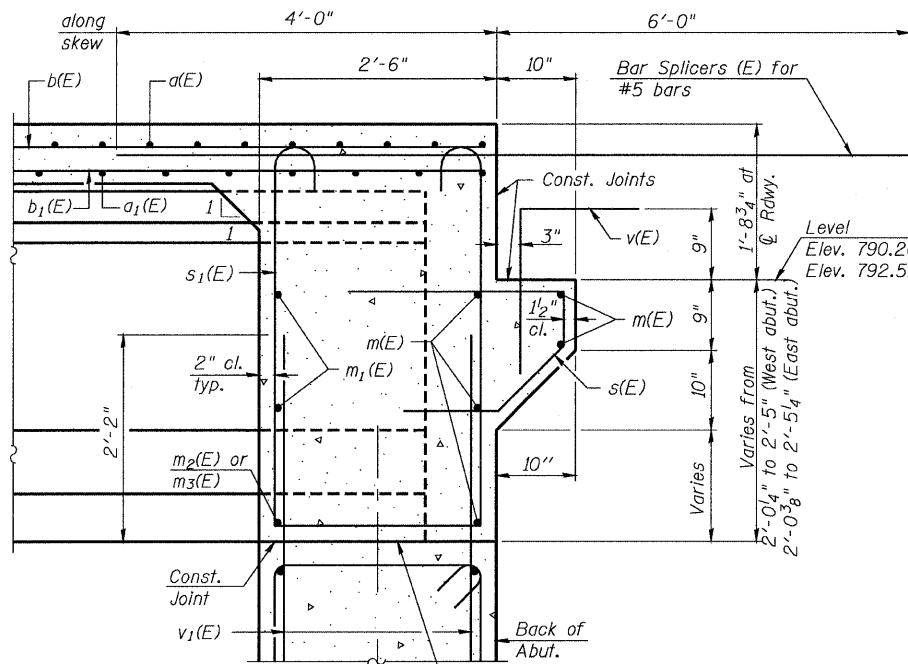


STATE OF ILLINOIS  
DEPARTMENT OF TRANSPORTATION

ROUTE NO.	SECTION	COUNTY	TOTAL SHEETS	SHEET NO.
FAP 301	177-2	STEPHENSON	386	198
FED. ROAD DIST. NO. 7		ILLINOIS	FED. AID PROJECT-	

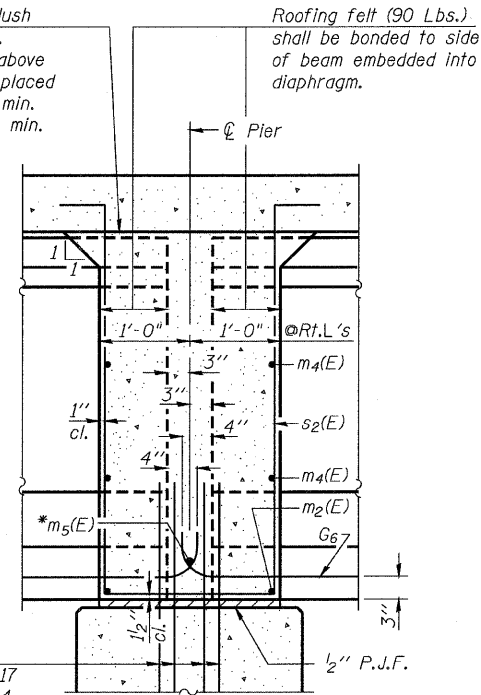
Contract No. 64799



**SECTION A-A**

Dimensions at right angles to abutment, except as shown.

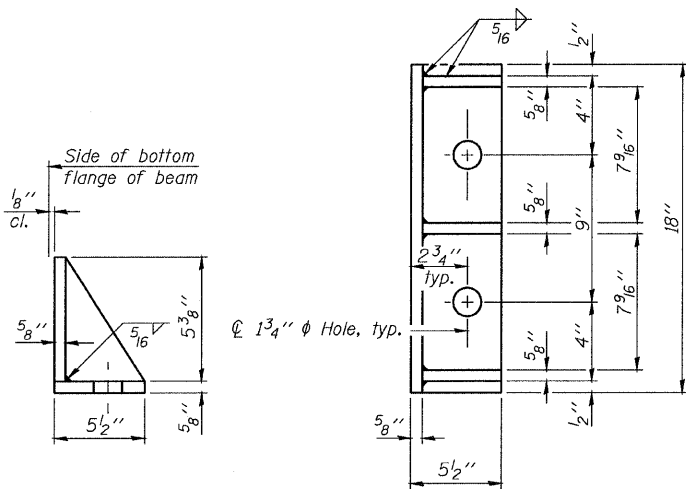
Pour diaphragm flush with bot. of slab. Concrete in slab above this line shall be placed not less than 45 min. nor more than 90 min. after diaphragm has been poured.



**SECTION B-B**

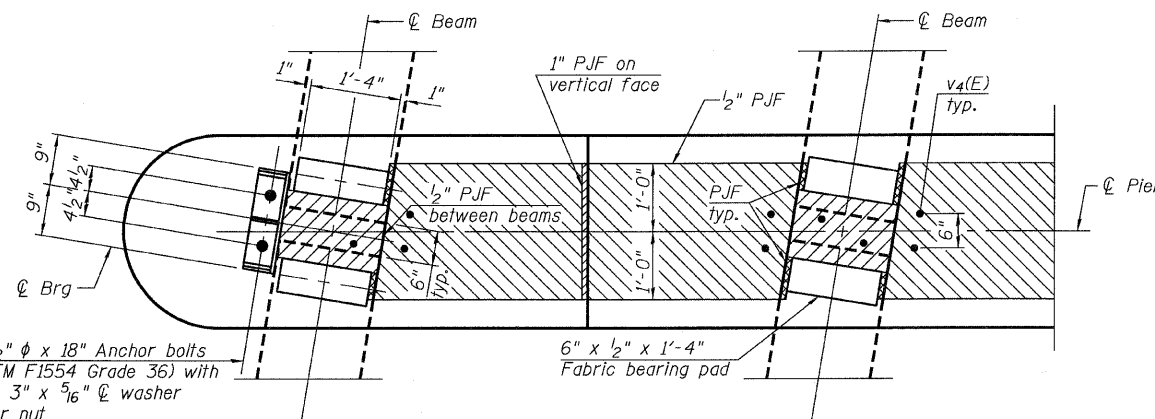
Dimensions along  $\mathcal{C}$  of beam, except as shown.

\* Tightly fasten the #8 bars together with No. 9 wire ties.



**SIDE RETAINER**

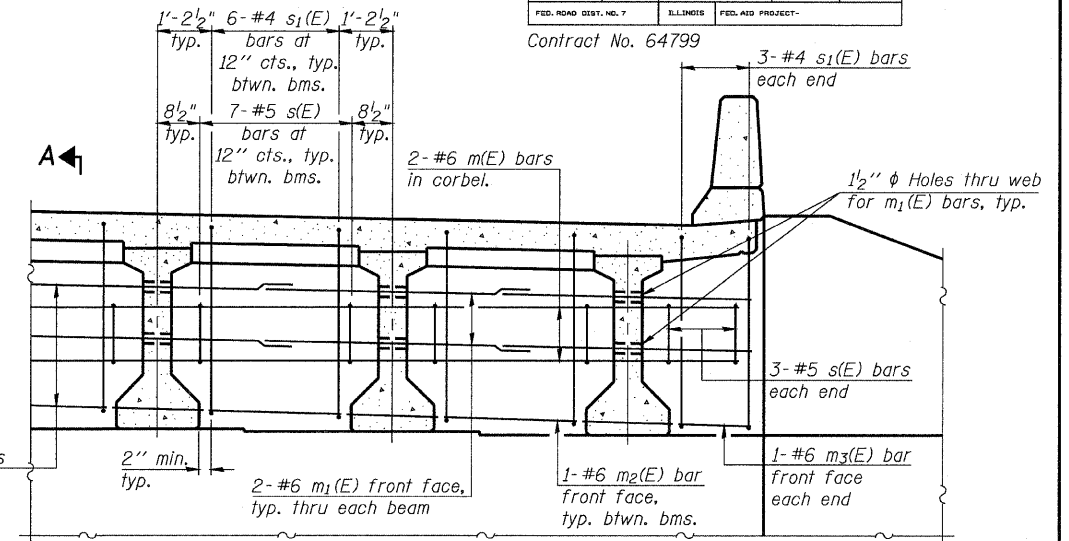
Equivalent rolled angle with stiffeners will be allowed in lieu of welded plates.



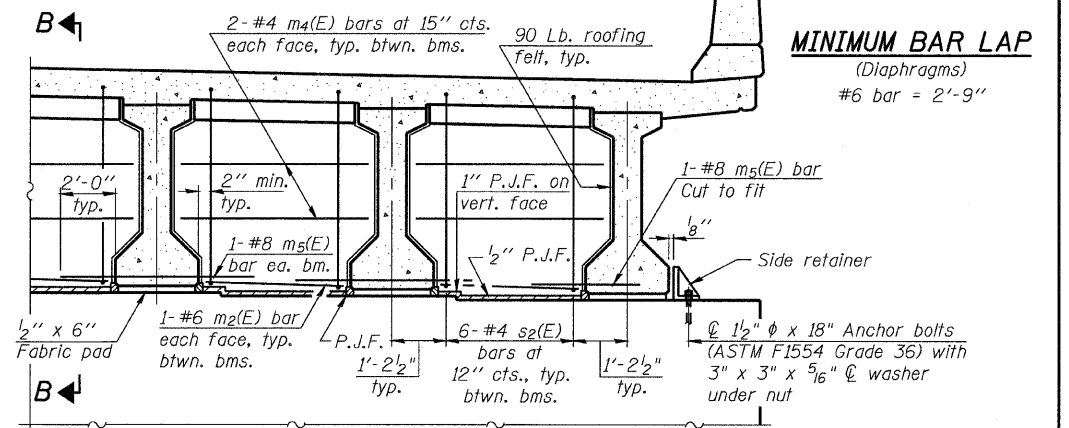
**PLAN AT PIER**

(Showing bearing pad and P.J.F. details)

DESIGNED	M. SHAIKH
CHECKED	J. ZUO
DRAWN	D.C. PATEL
CHECKED	J. GRAINAWI



**DIAPHRAGM ELEVATION AT ABUTMENT**



**DIAPHRAGM AT PIER**

Notes:

Reinforcement bars in diaphragm are billed with superstructure on sheet 8 of 24.  
Concrete in diaphragm is included with Concrete Superstructure on sheet 8 of 24.  
For details of bars s(E), s1(E) and s2(E) see sheet 8 of 24.  
The s(E), s1(E) and s2(E) bars shall be placed parallel to the beams. Spacing for these bars shall be at right angles to the beams.  
Cost of 90 Lb. roofing felt is included with Concrete Superstructure.  
The side retainer shall be galvanized after shop fabrication according to AASHTO M 111.  
Anchor bolt assemblies shall be galvanized according to Article 1006.09 of the Standard Specifications.  
Anchor bolts shall be ASTM F1554 all-thread (or an Engineer-approved alternate material) of the grade(s) and diameter(s) specified. ASTM A307 Grade C anchor bolts may be used in lieu of ASTM F1554 Grade 36 (Fy=36ksi). The corresponding specified grade of AASHTO M314 anchor bolts may be used in lieu of ASTM F1554.  
Anchor bolts for side retainers may be either cast in place or installed in holes drilled after the supporting member is in place and prior to pouring the deck.  
Drilled and set anchor bolts shall be installed according to Article 521.06 of the Standard Specifications.  
Cost of side retainer shall be included with Concrete Structures.

**MINIMUM BAR LAP**  
(Diaphragms)  
#6 bar = 2'-9"

**DIAPHRAGM DETAILS**  
F.A.P. ROUTE 301 SECTION 177-2VB-1  
STEPHENSON COUNTY  
STATION 569+87.29  
STRUCTURE NO. 089-0083

