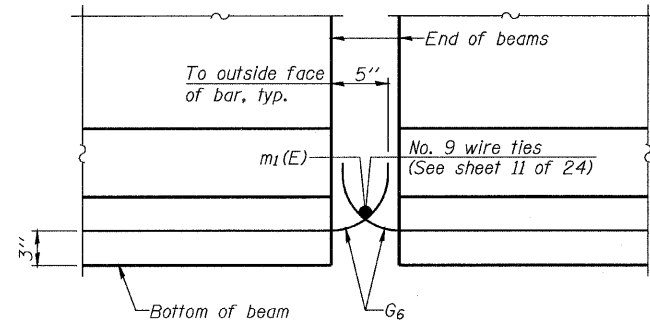


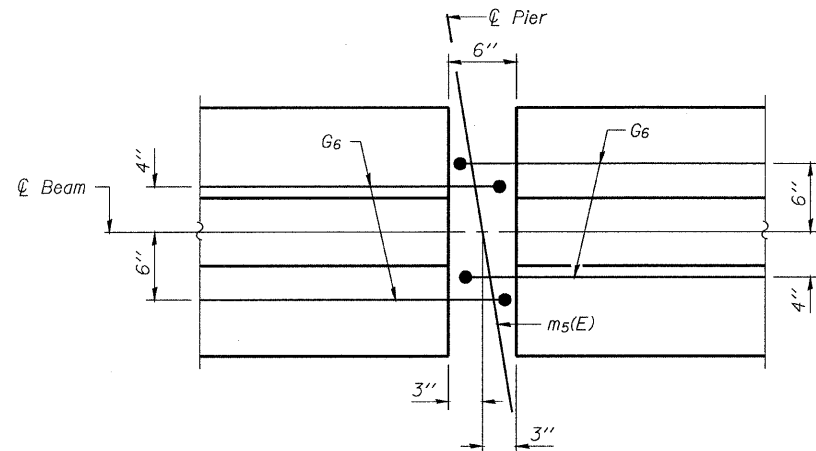
STATE OF ILLINOIS  
DEPARTMENT OF TRANSPORTATION

ROUTE NO.	SECTION	COUNTY	STAT. SHEETS	SHEET NO.	SHEET NO. 14
FAP 301	177-2	STEPHENSON	386	201	24 SHEETS
FED. ROAD DIST. NO. 7	ILLINOIS	FED. AID PROJECT-			

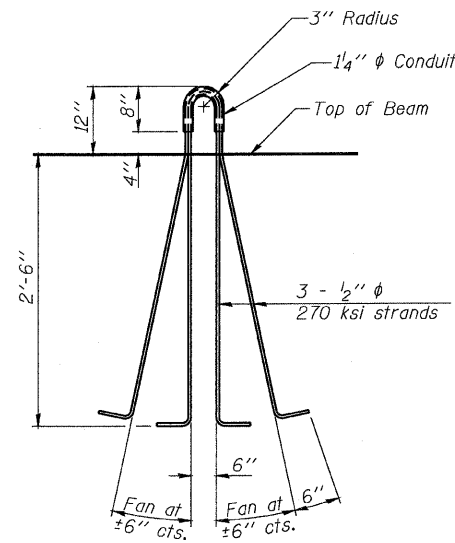
Contract No. 64799



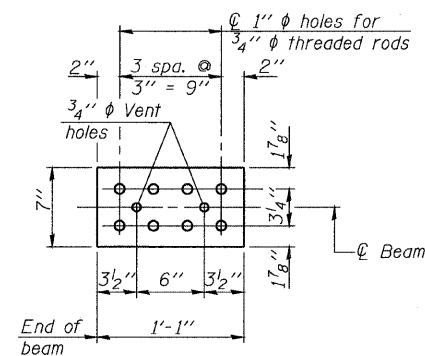
**ELEVATION OF BEAM AT PIER**



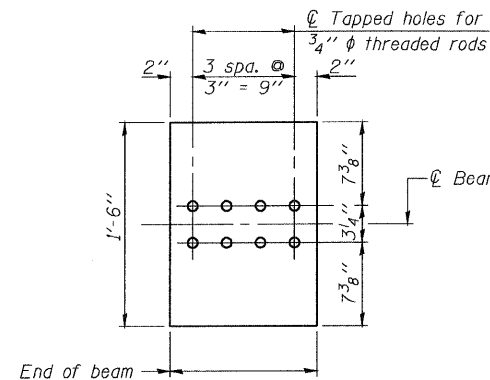
**PLAN OF BEAM AT PIER**



**LIFTING LOOP DETAIL**



**TOP PLATE**

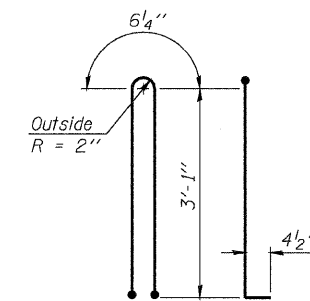


**BOTTOM PLATE**

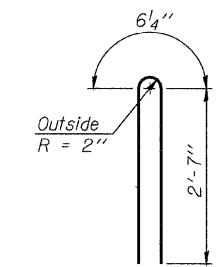
See bearing details for pintle hole locations when required.

**NOTES**

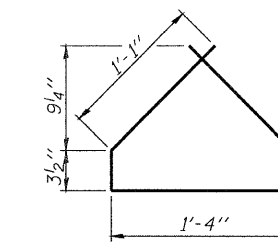
- Inserts for  $\frac{3}{4}$ "  $\phi$  threaded dowel rods, when specified, are to be two strut, ferrule type for interior beams and single ferrule, flared loop type for exterior beams.
- Prestressing steel shall be uncoated high strength, low relaxation 7-wire strand, Grade 270.
- The nominal diameter shall be  $\frac{1}{2}$ " and the nominal cross-sectional area shall be 0.153 sq. in.
- Reinforcement bars shall conform to ASTM A 706, Grade 60. (See Special Provisions).
- A minimum  $2\frac{1}{2}$ "  $\phi$  lifting pin shall be used to engage the lifting loops during handling.
- Cut G<sub>6</sub> bars when necessary to maintain  $1\frac{1}{2}$ " clearance.
- The top and bottom plates shall be AASHTO M270 Grade 50.
- The bottom plates and studs shall be galvanized according to AASHTO M111. Top plate and threaded bars need not be galvanized.
- Threaded rods shall be ASTM F 1554 Grade 55.



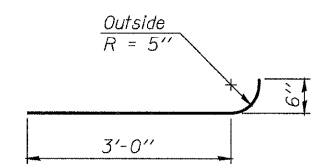
**BAR G1**



**BAR G2**



**BAR G4**



**BAR G6**

**BILL OF MATERIAL**

Item	Unit	Total
Furnishing and Erecting Precast Prestressed Concrete I-Beams, 36"	Foot	852

DESIGNED	M.SHAIKH
CHECKED	J.ZUO
DRAWN	D.C.PATEL
CHECKED	J.GRAINAWI



**36" PPC I-BEAM DETAILS**  
F.A.P. ROUTE 301 SECTION 177-2VB-1  
STEPHENSON COUNTY  
STATION 569+87.29  
STRUCTURE NO. 089-0083