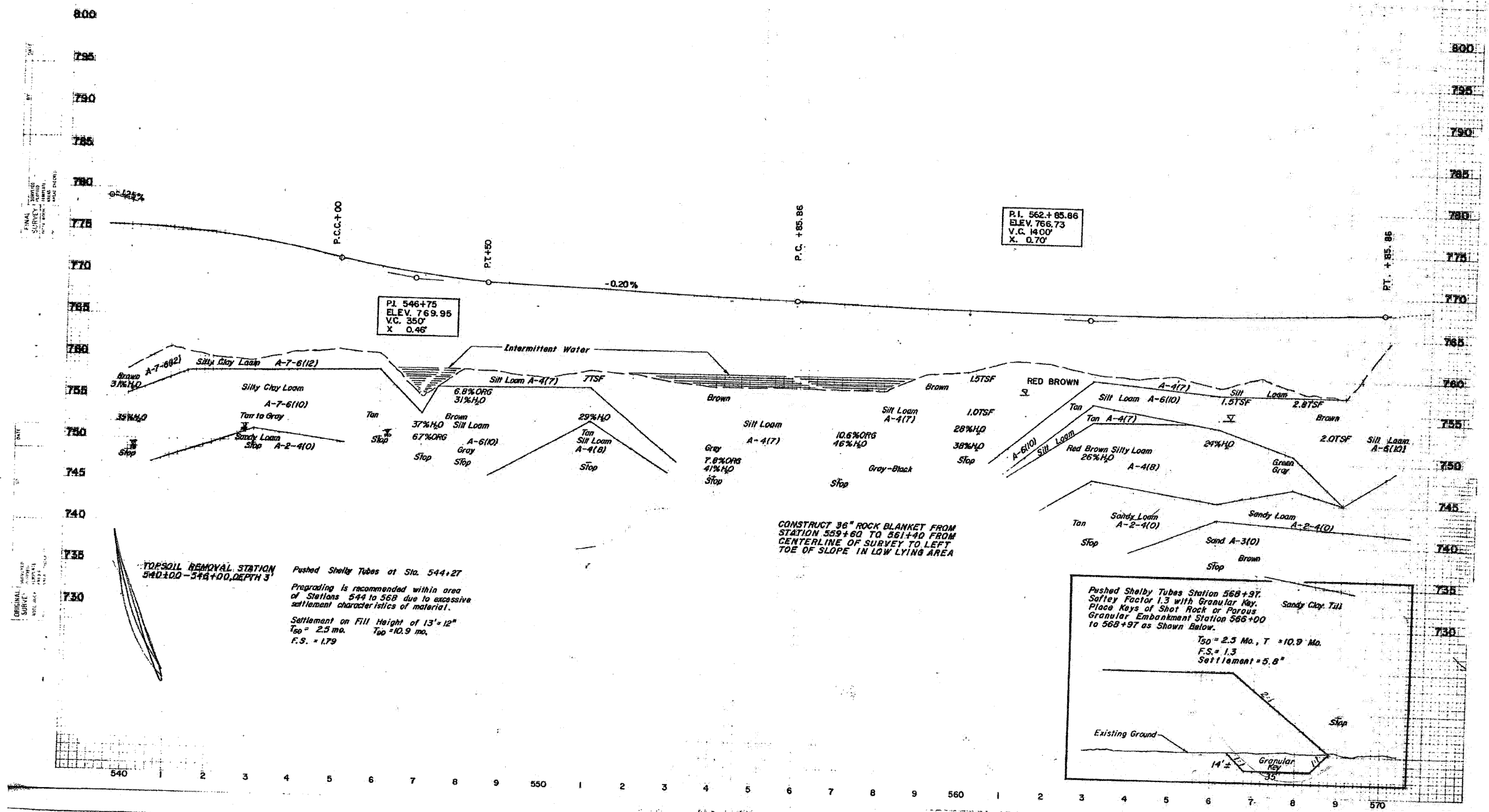


PROJECT NO.	SECTION	COUNTY	TOTAL SHEETS	SHEET NO.
FA 401	177-2	STEPHENSON	386	219
STA.	540+00	STA.	570+00	
PROJ. ROAD DIST. NO.		PROJECT		



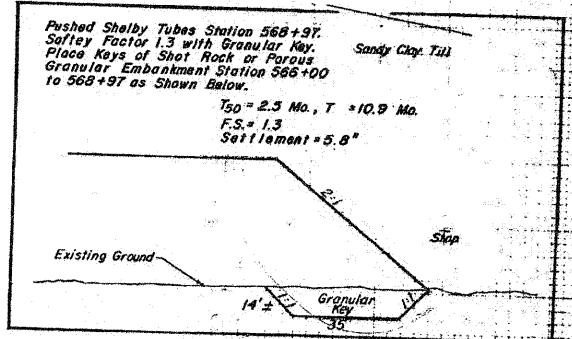
TOPSOIL REMOVAL STATION
 540+00 - 544+00, DEPTH 3'

Pushed Shelby Tubes at Sta. 544+27

Pregrading is recommended within area of Stations 544 to 568 due to excessive settlement characteristics of material.

Settlement on Fill Height of 13'-12"
 $T_{50} = 2.5$ mo. $T_{100} = 10.9$ mo.
 $F.S. = 1.79$

CONSTRUCT 36" ROCK BLANKET FROM STATION 559+60 TO 561+40 FROM CENTERLINE OF SURVEY TO LEFT TOE OF SLOPE IN LOW LYING AREA



NOTE:
 GEOTECHNICAL INVESTIGATION AND
 SOILS INFORMATION PER IDOT

REVISIONS	
NAME	DATE

ILLINOIS DEPARTMENT OF TRANSPORTATION
 F.A.P. ROUTE 301 (US RTE. 20)
 FROM BOLTON ROAD TO WEST OF IL RTE. 26

SOIL PROFILES

SCALE: NTS
 DATE: 01-22-10

DRAWN BY: RMH
 CHECKED BY: DM

