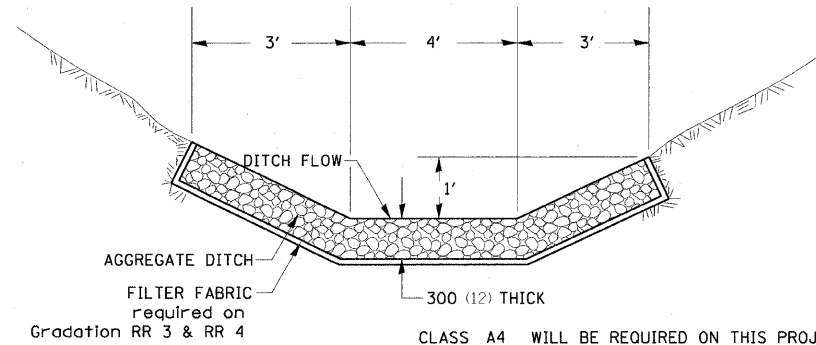


F.A. RTE.	SECTION	COUNTY	TOTAL SHEETS	SHEET NO.
301	177-2 (-1A, B-1, VB-1)	STEPHENSON	386	221
STA.		TO STA.		
FED. ROAD DIST. NO.		ILLINOIS	FED. AID PROJECT	
P-92-029-02				

# AGGREGATE DITCH FOR FLEXIBLE DITCH LINING



CLASS A4 WILL BE REQUIRED ON THIS PROJECT AT THE LOCATION SHOWN ON THE PLANS.

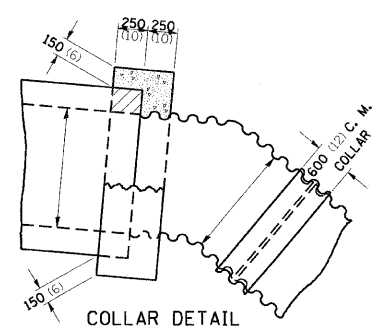
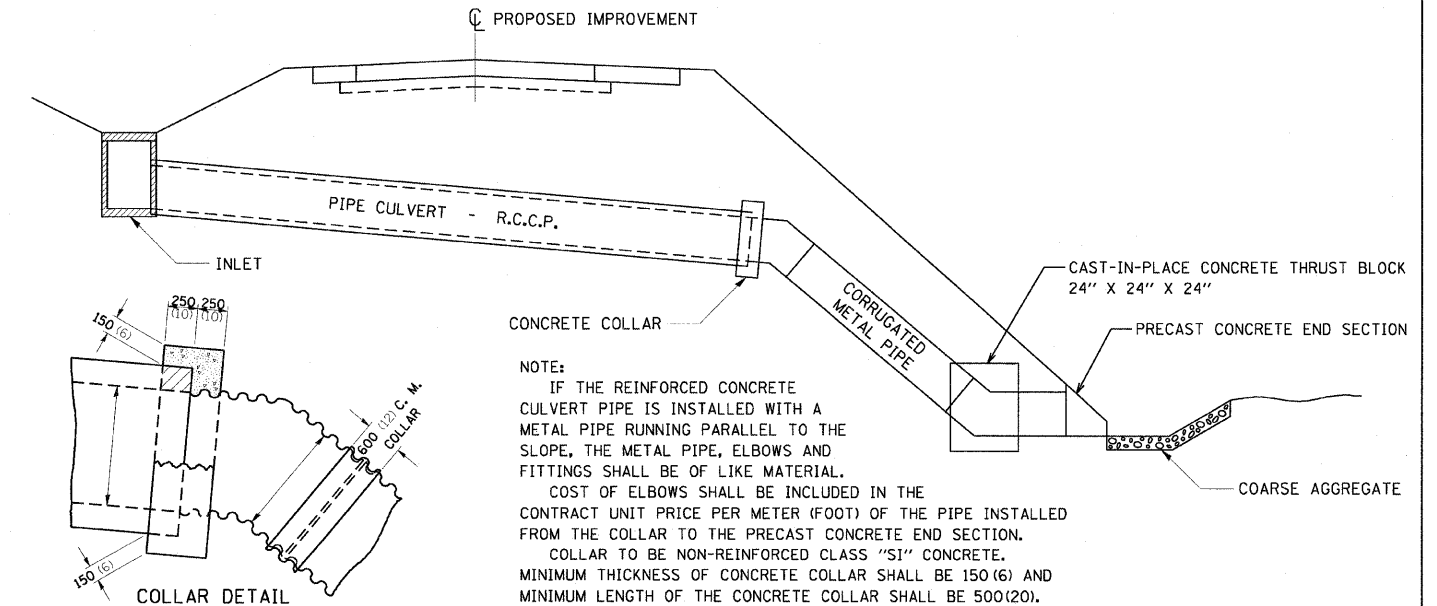
THIS WORK SHALL BE DONE IN ACCORDANCE WITH SECTION 283. AGGREGATE DITCH WILL BE MEASURED FOR PAYMENT IN PLACE AND THE AREA COMPUTED IN SQUARE METERS (SQUARE YARD) OF ACTUAL SURFACE AREA. AGGREGATE DITCH WILL BE PAID FOR AT THE CONTRACT UNIT PRICE PER TON FOR AGGREGATE DITCH.

ALL DIMENSIONS ARE IN MILLIMETERS (INCHES) UNLESS OTHERWISE NOTED.

## AGGREGATE DITCH FOR FLEXIBLE DITCH LINING 21.4

REVISED 9-19-05

# MEDIAN DRAIN WITH COLLAR AT SHOULDER



CORRUGATED METAL ELBOWS

SLOPE	ELBOW ANGLE
1 : 2	25°
1 : 3	20°

NOTE:  
IF THE REINFORCED CONCRETE CULVERT PIPE IS INSTALLED WITH A METAL PIPE RUNNING PARALLEL TO THE SLOPE, THE METAL PIPE, ELBOWS AND FITTINGS SHALL BE OF LIKE MATERIAL. COST OF ELBOWS SHALL BE INCLUDED IN THE CONTRACT UNIT PRICE PER METER (FOOT) OF THE PIPE INSTALLED FROM THE COLLAR TO THE PRECAST CONCRETE END SECTION. COLLAR TO BE NON-REINFORCED CLASS "SI" CONCRETE. MINIMUM THICKNESS OF CONCRETE COLLAR SHALL BE 150(6) AND MINIMUM LENGTH OF THE CONCRETE COLLAR SHALL BE 500(20). ALL THE WORK AND COARSE AGGREGATE MATERIALS INVOLVED IN THE CONSTRUCTION OF THE CONCRETE COLLAR SHALL BE INCLUDED IN THE CONTRACT UNIT PRICE PER METER (FOOT) OF PIPE CULVERTS.

ALL DIMENSIONS ARE IN MILLIMETERS (INCHES) UNLESS OTHERWISE NOTED.

## MEDIAN DRAIN WITH COLLAR AT SHOULDER 22.4

REVISED 5-4-94

PLOT DATE : 1/26/2010  
FILE NAME : #FILEL#  
PLOT SCALE : #SCALE#  
REFERENCE : #REF#