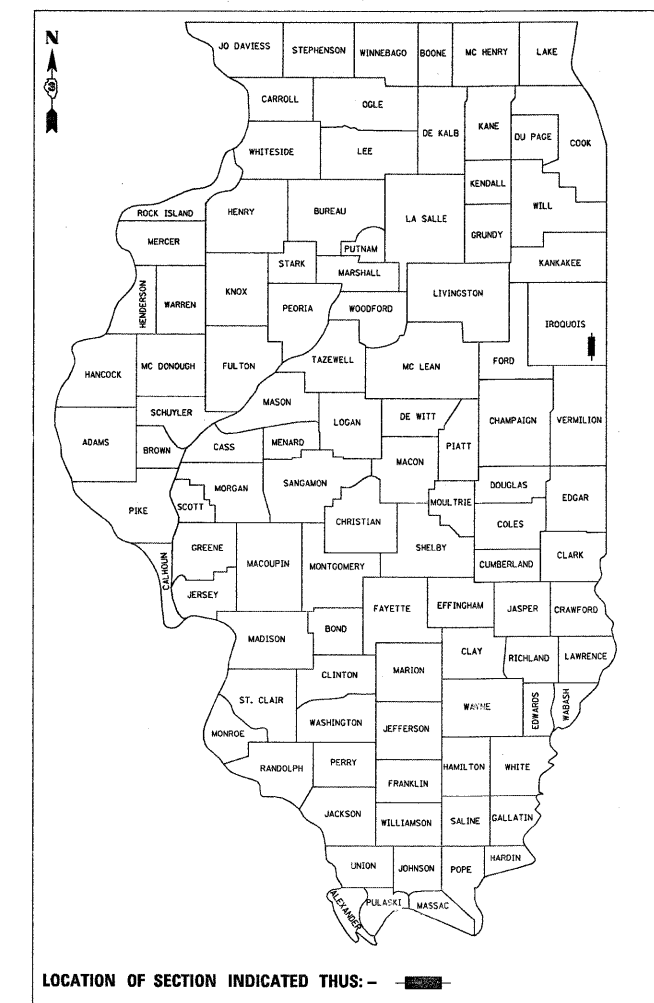


F.A.P. RTE.	SECTION	COUNTY	TOTAL SHEETS	SHEET NO.
332	(2X, 1X, 17, 48X-4)RS-3	IROUOIS	15	1
		ILLINOIS	CONTRACT NO. 66663	

D-93-036-05



**FUNCTIONAL CLASSIFICATION**  
 RURAL OTHER PRICIPAL ARTERIAL  
 2010 ADT = 2350  
 PV=81% SU=6% MU=13%

STATE OF ILLINOIS  
 DEPARTMENT OF TRANSPORTATION  
 DIVISION OF HIGHWAYS

SUBMITTED 1128 2010

*James F. Ryan*  
 DEPUTY DIRECTOR OF HIGHWAYS, REGION ENGINEER

March 19, 2010  
*Scott E. Stiel, P.E.*  
 Acting ENGINEER OF DESIGN AND ENVIRONMENT

March 19, 2010  
*Christine M. Reed*  
 DIRECTOR OF HIGHWAYS, CHIEF ENGINEER

**PRINTED BY THE AUTHORITY  
 OF THE STATE OF ILLINOIS**

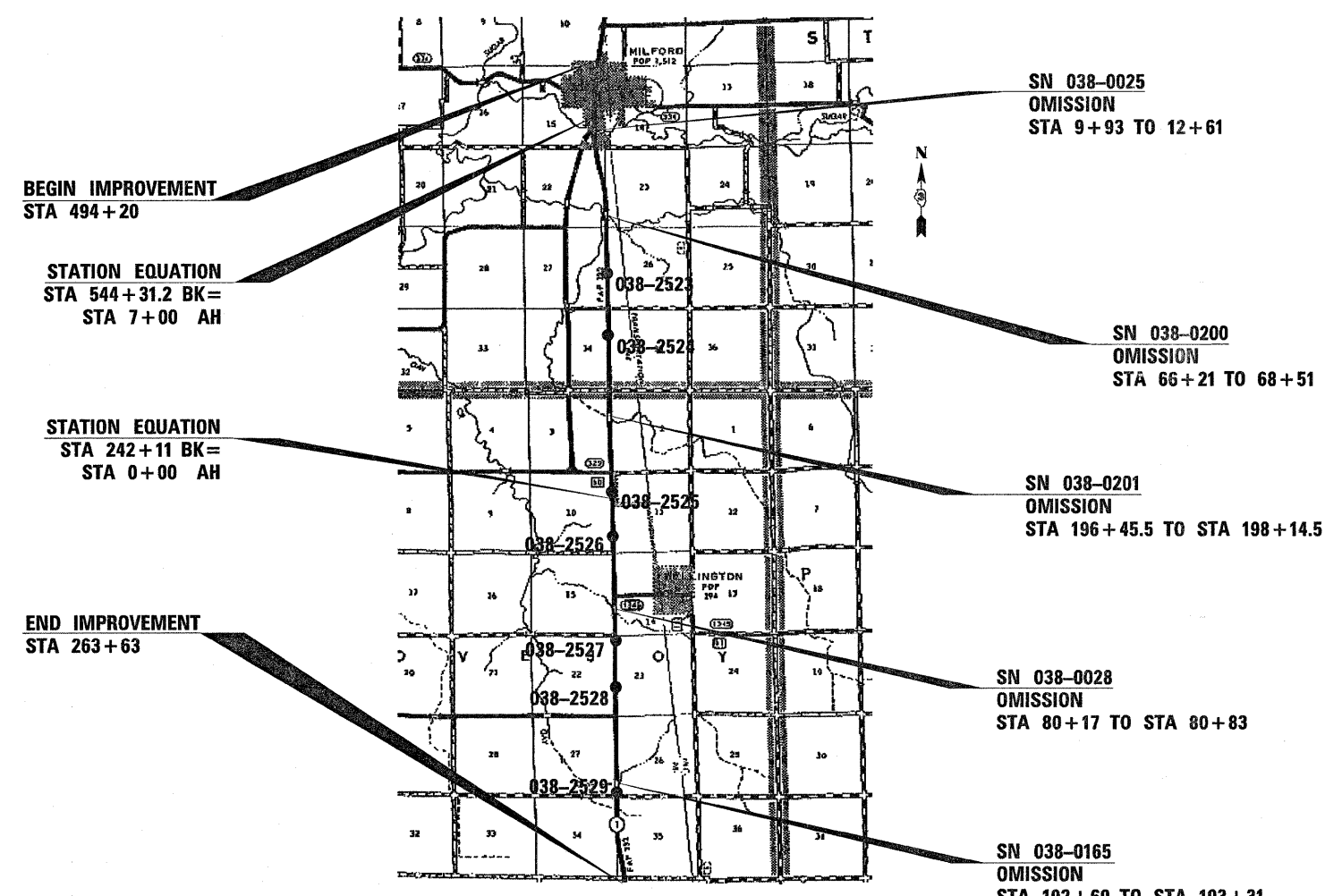
STATE OF ILLINOIS  
 DEPARTMENT OF TRANSPORTATION  
 DIVISION OF HIGHWAYS

**PROPOSED  
 HIGHWAY PLANS**

FAP ROUTE 332 (IL 1)  
 SECTION (2X, 1X, 17, 48X-4)RS-3

IROUOIS COUNTY  
 C-93-054-05

3P RESURFACING FROM THE NORTH CORPORATE LIMITS  
 OF MILFORD TO THE VERMILION COUNTY LINE



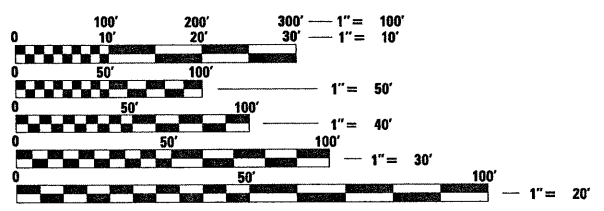
GROSS LENGTH = 54885.2 FT = 10.395 MILE  
 NET LENGTH = 54090.2 FT = 10.244 MILE

**INDEX OF SHEETS**

- 1 COVER SHEET
- 2 GENERAL NOTES
- 3 SUMMARY OF QUANTITIES
- 4 TYPICAL SECTIONS
- 5-7 SCHEDULES
- 8 TIE POINTS
- 9 PROJECT LAYOUT
- 10-15 DETAILS

**STANDARDS**

- 000001-05 STANDARD SYMBOLS, ABBREVIATIONS AND PATTERNS
- 001006 DECIMAL OF AN INCH AND OF A FOOT
- 406201-01 MAILBOX TURNOUT
- 424001-05 CURB RAMPS FOR SIDEWALK
- 635011-02 REFLECTOR MARKER AND MOUNTING DETAILS
- 635006-03 REFLECTOR AND TERMINAL MARKER PLACEMENT
- 701001-02 OFF-ROAD OPERATIONS 2L, 2W, MORE THAN 15' (4.5 m) AWAY
- 701006-03 OFF-ROAD OPERATIONS 2L, 2W, 15' (4.5 m) TO 24" (600 mm) FROM PAVEMENT EDGE
- 701011-02 OFF-ROAD MOVING OPERATIONS 2L, 2W, DAY ONLY
- 701301-03 LANE CLOSURE, 2L, 2W, SHORT TIME OPERATIONS
- 701306-02 LANE CLOSURE, 2L, 2W, SLOW MOVING OPERATIONS DAY ONLY, FOR SPEEDS ≥ 45 MPH
- 701311-03 LANE CLOSURE, 2L, 2W, MOVING OPERATIONS - DAY ONLY
- 701901-01 TRAFFIC CONTROL DEVICES
- 780001-02 TYPICAL PAVEMENT MARKINGS
- 781001-03 TYPICAL APPLICATIONS RAISED REFLECTIVE PAVEMENT MARKERS
- 667101-01 PERMANENT SURVEY MARKERS



FULL SIZE PLANS HAVE BEEN PREPARED USING STANDARD ENGINEERING SCALES. REDUCED SIZED PLANS WILL NOT CONFORM TO STANDARD SCALES. IN MAKING MEASUREMENTS ON REDUCED PLANS, THE ABOVE SCALES MAY BE USED.

J.U.L.I.E.  
 JOINT UTILITY LOCATION INFORMATION FOR EXCAVATION  
 1-800-892-0123  
 OR 811

PROJECT ENGINEER: JOE KANNEL  
 UNIT CHIEF: MICHELE LINDEMANN

CONTRACT NO. 66663