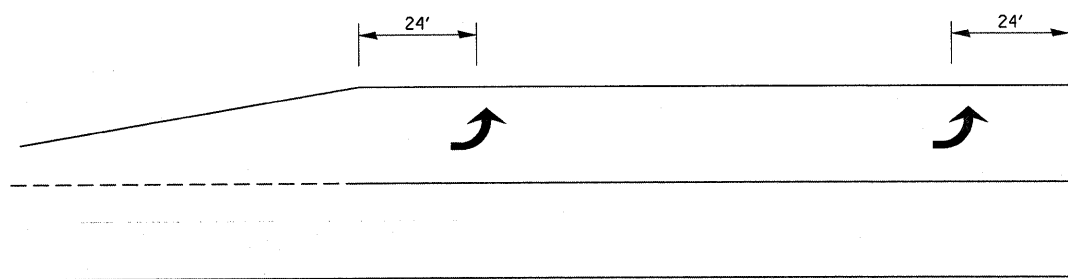
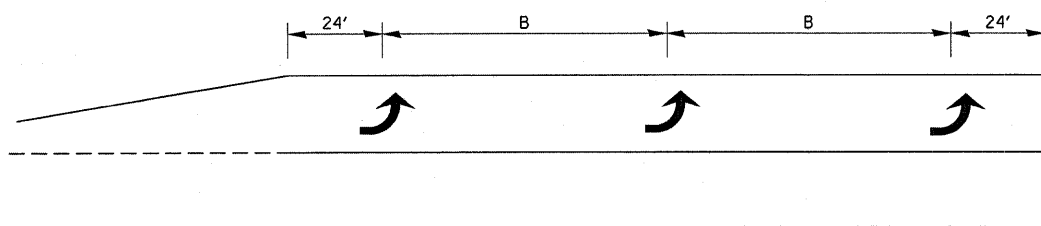


**99' AND UNDER**

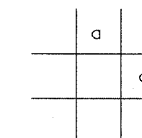
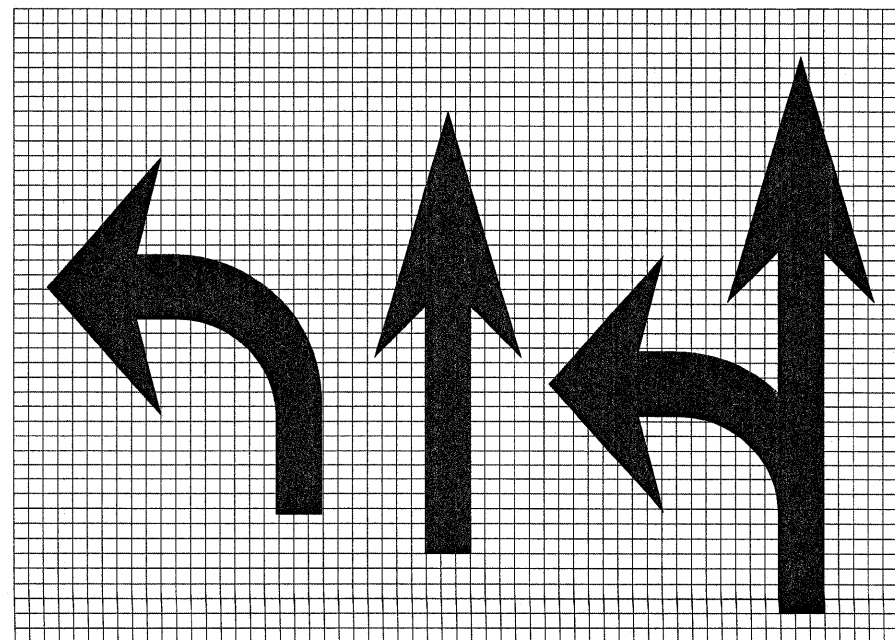
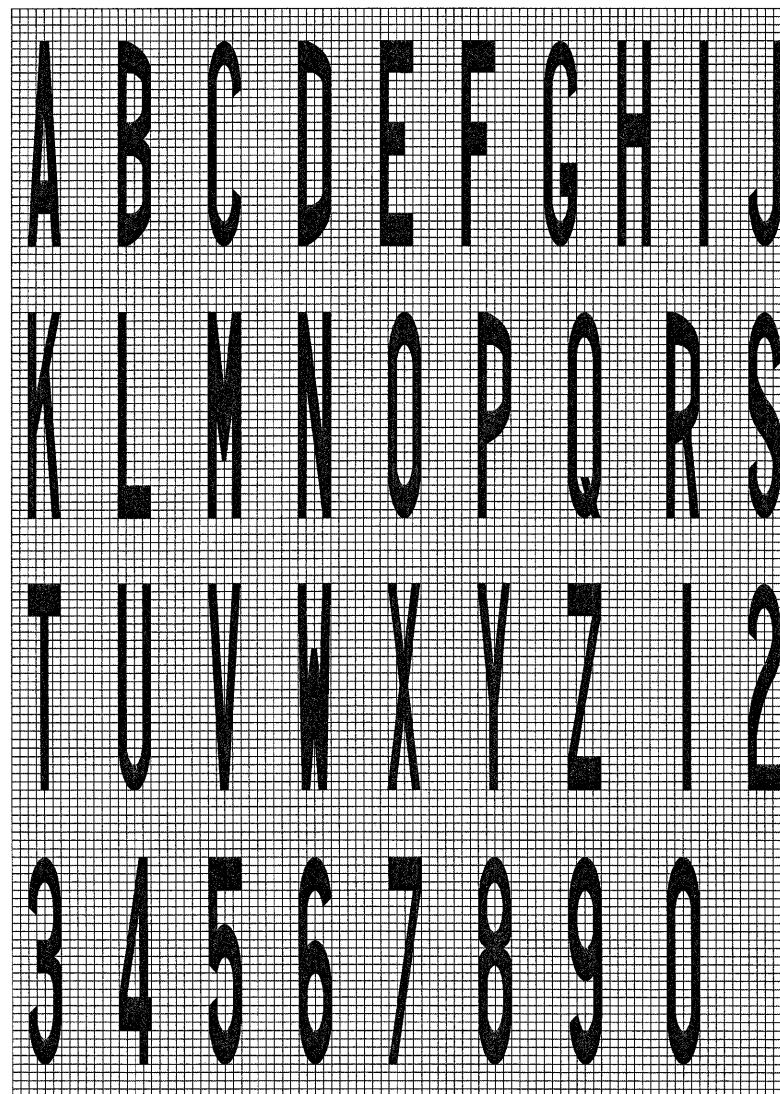


**100' TO 149'**



**150' AND LONGER**

**TYPICAL PLACEMENT OF ARROWS  
IN TURN LANES**



LEGEND HEIGHT	ARROW SIZE	a
6'	SMALL	2.9
8'	LARGE	3.8

THE SPACE BETWEEN ADJACENT LETTERS OR NUMERALS SHOULD BE APPROXIMATELY 3' FOR 6' LEGEND AND 4' FOR 8' LEGEND.

**LETTER AND ARROW GRID SCALE**