

STATE OF ILLINOIS
DEPARTMENT OF TRANSPORTATION
DIVISION OF HIGHWAYS

PROPOSED
HIGHWAY PLANS

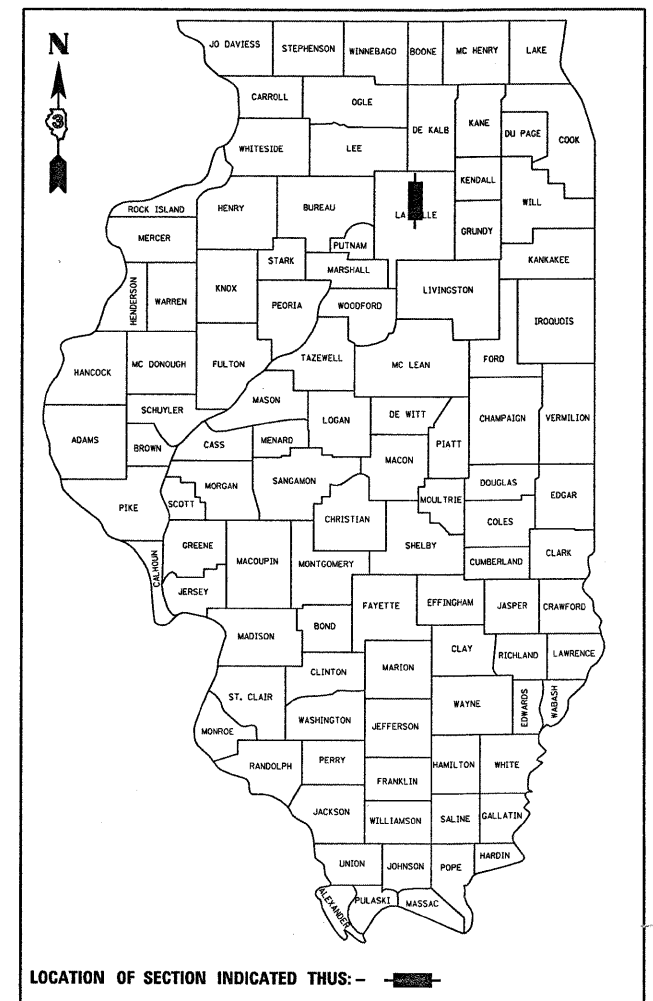
FAP 68 (IL 23)
SECTION (3)RS-6

3P MILLING AND RESURFACING FROM EAST
OF IL 23 AT CROOKED LEG CREEK TO US 34
LASALLE COUNTY

C-93-064-09

F.A.P. RTE.	SECTION	COUNTY	TOTAL SHEETS	SHEET NO.
68	(3)RS-6	LASALLE	13	1
		ILLINOIS	CONTRACT NO. 66929	

D-93-040-09



RURAL MINOR ARTERIAL
2010 ADT = 2350
P.V. = 85%
S.U. = 7%
M.U. = 8%

STATE OF ILLINOIS
DEPARTMENT OF TRANSPORTATION
DIVISION OF HIGHWAYS

SUBMITTED 2-8-2010
George Rapan
DEPUTY DIRECTOR OF HIGHWAYS, REGION ENGINEER
March 19, 2010
Scott E. Stitt, P.E./RD
Acting ENGINEER OF DESIGN AND ENVIRONMENT
March 19, 2010
Christine M. Reed/RD
DIRECTOR OF HIGHWAYS, CHIEF ENGINEER

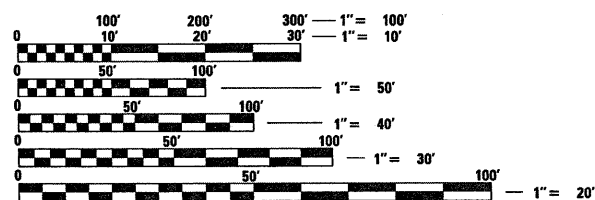
PRINTED BY THE AUTHORITY
OF THE STATE OF ILLINOIS

INDEX OF SHEETS

- 1 COVER SHEET
- 2 GENERAL NOTES
- 3 SUMMARY OF QUANTITIES
- 4 TYPICAL SECTIONS
- 5-6 SCHEDULES
- 7-8 TIE POINTS
- 9 PROJECT LAYOUT
- 10-13 DETAILS

STANDARDS

- 000001-05 STANDARD SYMBOLS, ABBREVIATIONS AND PATTERNS
- 001006 DECIMAL OF AN INCH AND OF A FOOT
- 280001-05 TEMPORARY EROSION CONTROL SYSTEMS
- 667101-01 PERMANENT SURVEY MARKERS
- 701006-03 OFF-ROAD OPERATIONS 2L, 2W, 15' (4.5 m) TO 24" (600 mm) FROM PAVEMENT EDGE
- 701011-02 OFF-ROAD MOVING OPERATIONS 2L, 2W, DAY ONLY
- 701301-03 LANE CLOSURE, 2L, 2W, SHORT TIME OPERATIONS
- 701306-02 LANE CLOSURE, 2L, 2W, SLOW MOVING OPERATIONS DAY ONLY, FOR SPEEDS ≥ 45 MPH
- 701311-03 LANE CLOSURE, 2L, 2W, MOVING OPERATIONS - DAY ONLY
- 701901-01 TRAFFIC CONTROL DEVICES
- 780001-02 TYPICAL PAVEMENT MARKINGS
- 781001-03 TYPICAL APPLICATIONS RAISED REFLECTIVE PAVEMENT MARKERS



FULL SIZE PLANS HAVE BEEN PREPARED USING STANDARD ENGINEERING SCALES. REDUCED SIZED PLANS WILL NOT CONFORM TO STANDARD SCALES. IN MAKING MEASUREMENTS ON REDUCED PLANS, THE ABOVE SCALES MAY BE USED.

J.U.L.I.E.
JOINT UTILITY LOCATION INFORMATION FOR EXCAVATION
1-800-892-0123
OR 811

PROJECT ENGINEER: JOE KANNEL
UNIT CHIEF: MICHELE LINDEMANN

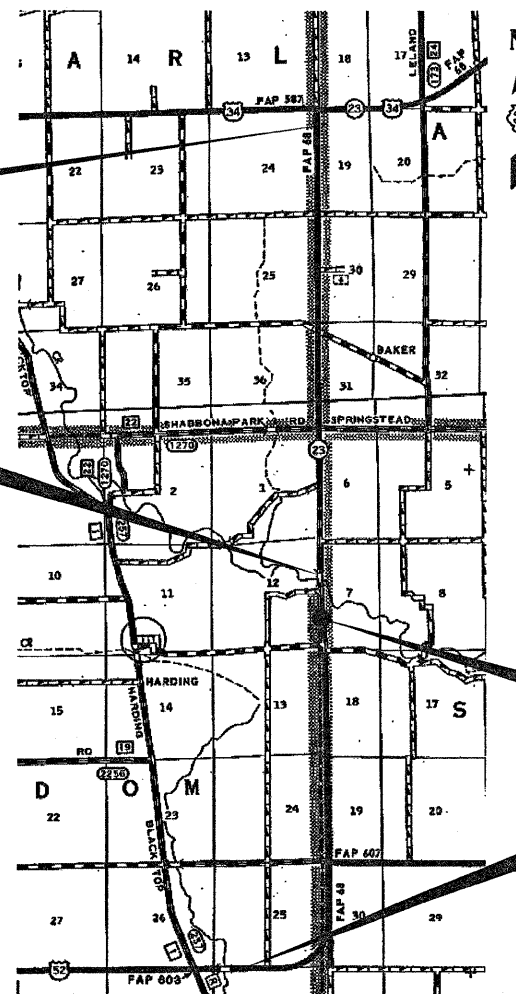
CONTRACT NO. 66929

END IMPROVEMENT
STA 894 + 80

SN 050-0159 - OMISSION
STA 660 + 53 TO STA 662 + 47

SN 050-2583
STA 703 + 25

BEGIN IMPROVEMENT
STA 424 + 50



GROSS LENGTH = 47030.00 FT. = 8.907 MILE
NET LENGTH = 46836.00 FT. = 8.870 MILE

GENERAL NOTES

THE THICKNESS OF HMA SHOWN ON THE PLANS IS THE NOMINAL THICKNESS. DEVIATIONS FROM THE NOMINAL THICKNESS WILL BE PERMITTED WHEN SUCH DEVIATIONS OCCUR DUE TO IRREGULARITIES IN THE EXISTING SURFACE OR BASE ON WHICH THE HMA IS PLACED.

THE HMA SURFACE OF ALL MAILBOX TURNOUTS, PRIVATE ENTRANCES, COMMERCIAL ENTRANCES, AND SIDE ROADS SHALL BE MADE NEATLY, IN A WORKMANLIKE MANNER, AND SHALL ACCURATELY CONFORM TO THE SHAPES AND DIMENSIONS SHOWN ON THE PLAN DETAILS. IF REQUIRED BY THE ENGINEER, THE CONTRACTOR SHALL BE REQUIRED TO SAW CUT THE HMA SURFACE TO CONFORM TO THE SHAPES AND DIMENSIONS SHOWN ON THE PLAN DETAILS. THIS WORK SHALL BE INCLUDED IN THE COST OF THE HMA SURFACE.

THE ENGINEER WILL BE THE SOLE JUDGE CONCERNING CURING TIME FOR THE VARIOUS HMA LIFTS.

SEEDING SHALL NOT BE PERMITTED AT ANY TIME WHEN THE GROUND IS FROZEN, WET, OR IN AN UNTILLABLE CONDITION. LOCATIONS TO BE SEEDED WILL BE DETERMINED BY THE ENGINEER.

THE FINISHED EARTHWORK SHALL HAVE A VEGETATION SUSTAINING SOIL COVERING THE TOP FOUR INCHES IN AREAS TO BE SEEDED OR SODDED. THE VEGETATION SUSTAINING SOIL REQUIRED WILL NOT BE PAID FOR SEPARATELY BUT SHALL BE INCLUDED IN THE COST OF FURNISHED EXCAVATION.

ON EXISTING PAVEMENT WHICH MAY BE SUPERELEVATED, THE NEW HMA PAVEMENT SHALL BE BUILT WITH THE SAME SUPERELEVATION UNLESS NEW SUPERELEVATION RATES ARE GIVEN ON THE PLANS.

ANY REFERENCE TO A STANDARD IN THESE PLANS SHALL BE INTERPRETED TO MEAN THE EDITION AS INDICATED BY THE SUBNUMBER SHOWN IN THE LIST OF STANDARDS OR THE COPY INCLUDED IN THESE PLANS.

THE FOLLOWING RATES OF APPLICATION HAVE BEEN USED IN CALCULATING PLAN QUANTITIES:

GRANULAR MATERIALS	2.05	TONS / CU YD
BIT MATERIALS (PRIME COAT) ON AGGREGATE BASES	0.375	GAL / SQ YD
BITUMINOUS MATERIALS (PRIME COAT)	0.08	GAL / SQ YD
FOR ADDITIONAL HMA LIFTS "FOG COAT"	0.05	GAL / SQ YD
AGGREGATE PRIME COAT	0.002	TONS / SQ YD
HMA RESURFACING	112	LBS / SQ YD / IN
SHORT TERM PAVEMENT MARKING	10	FT / 100 FT OF APPLICATION
MIX FOR CRACKS, JTS & FLGWYS	0.0003	TONS / SQ YD
LEVEL BINDER (HAND METHOD)	0.0005	TONS / SQ YD

THE CONTRACTOR SHALL CONTACT JULIE AT LEAST 48 HOURS PRIOR TO EXCAVATION TO DETERMINE WHICH UTILITIES ARE IN THE AREA.

STATE OF ILLINOIS
DEPARTMENT OF TRANSPORTATION
DISTRICT THREE

PREPARED BY: Dani Bogomil
DISTRICT STUDIES & PLANS ENGINEER

DATE: 2-8-10

EXAMINED BY: Harb Anger
DISTRICT CONSTRUCTION ENGINEER

Wayne Z. Phillips
DISTRICT MATERIALS ENGINEER

Bruce A. Huchan
DISTRICT OPERATIONS ENGINEER

FILE NAME =	USER NAME = carpentardj	DESIGNED -	REVISED -	STATE OF ILLINOIS DEPARTMENT OF TRANSPORTATION	GENERAL NOTES	F.A.P. RTE.	SECTION	COUNTY	TOTAL SHEETS	SHEET NO.	
c:\pw\work\puidot\carpentardj\d0122635\366929-sht-cover.dgn	PLOT SCALE = 50.0000' / IN.	DRAWN -	REVISED -			68	(3)RS-6	LASALLE	13	2	
	PLOT DATE = Feb 08, 2010 - 08:37:46 AM	CHECKED -	REVISED -			CONTRACT NO. 66929					
		DATE -	REVISED -			SCALE:	SHEET NO.	OF	SHEETS	STA.	TO STA.

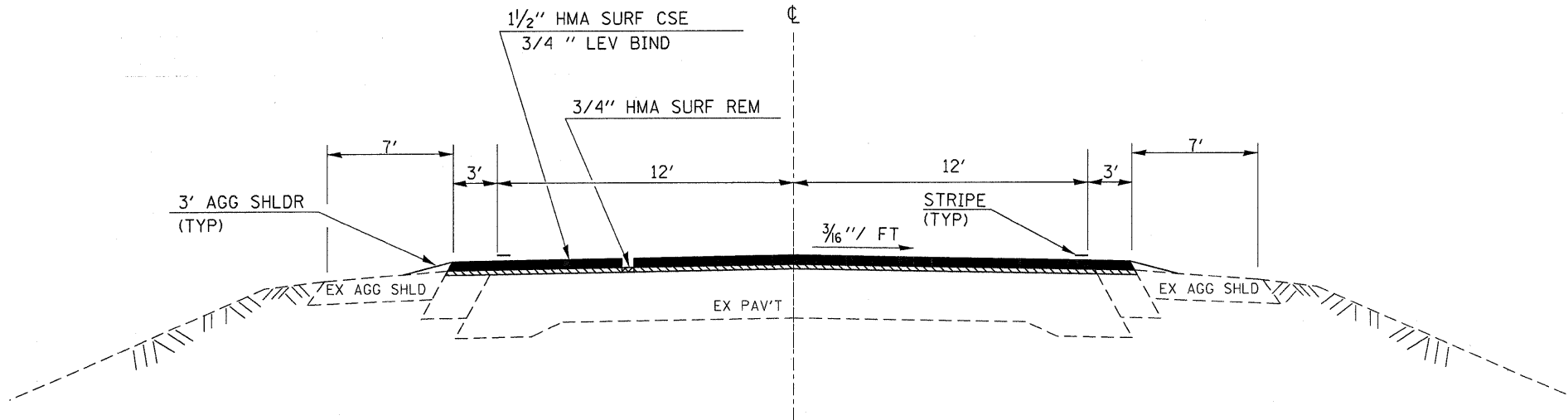
100% STATE

SUMMARY OF QUANTITIES			
CODE NO.	ITEM	UNIT	1000 ROADWAY
20400800	FURNISHED EXCAVATION	CU YD	41
25000200	SEEDING, CLASS 2	ACRE	0.3
25000400	NITROGEN FERTILIZER NUTRIENT	POUND	24
25000500	PHOSPHORUS FERTILIZER NUTRIENT	POUND	24
25000600	POTASSIUM FERTILIZER NUTRIENT	POUND	24
25100630	EROSION CONTROL BLANKET	SQ YD	1448
40200800	AGGREGATE SURFACE COURSE, TYPE B	TON	31
40600100	BITUMINOUS MATERIAL (PRIME COAT)	GALLON	19716
40600300	AGGREGATE (PRIME COAT)	TON	606
40600400	MIXTURE FOR CRACKS, JOINTS, AND FLANGEWAYS	TON	45
40600525	LEVELING BINDER (HAND METHOD), N50	TON	75
40600625	LEVELING BINDER (MACHINE METHOD), N50	TON	6287
40600895	CONSTRUCTING TEST STRIP	EACH	1
40600982	HOT-MIX ASPHALT SURFACE REMOVAL - BUTT JOINT	SQ YD	1167
40600990	TEMPORARY RAMP	SQ YD	220
40603310	HOT-MIX ASPHALT SURFACE COURSE, MIX "C", N50	TON	12572
40800050	INCIDENTAL HOT-MIX ASPHALT SURFACING	TON	287
44000152	HOT-MIX ASPHALT SURFACE REMOVAL, 3/4"	SQ YD	142475
44000158	HOT-MIX ASPHALT SURFACE REMOVAL, 2 1/4"	SQ YD	9302
48102100	AGGREGATE WEDGE SHOULDER, TYPE B	TON	2266
48203100	HOT-MIX ASPHALT SHOULDERS	TON	2580
67000400	ENGINEER'S FIELD OFFICE, TYPE A	CAL MO	5
66700205	PERMANENT SURVEY MARKERS, TYPE I	EACH	5
67100100	MOBILIZATION	L SUM	1
70100460	TRAFFIC CONTROL AND PROTECTION, STANDARD 701306	L SUM	1
70300100	SHORT-TERM PAVEMENT MARKING	FOOT	14210
70300210	TEMPORARY PAVEMENT MARKING - LETTERS AND SYMBOLS	SQ FT	31.2
70300220	TEMPORARY PAVEMENT MARKING - LINE 4"	FOOT	100191
70300240	TEMPORARY PAVEMENT MARKING - LINE 6"	FOOT	11928
70300250	TEMPORARY PAVEMENT MARKING - LINE 8"	FOOT	460
70300260	TEMPORARY PAVEMENT MARKING - LINE 12"	FOOT	240
70300280	TEMPORARY PAVEMENT MARKING - LINE 24"	FOOT	34
70301000	WORK ZONE PAVEMENT MARKING REMOVAL	SQ FT	1577
78001100	PAINT PAVEMENT MARKING - LETTERS AND SYMBOLS	SQ FT	62.4

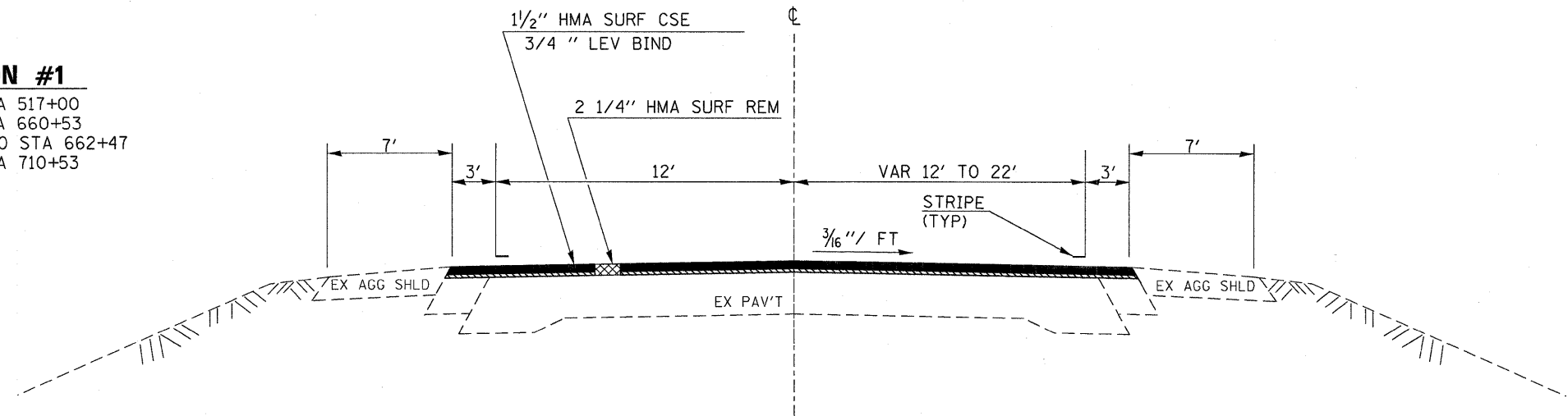
100% STATE

SUMMARY OF QUANTITIES			
CODE NO.	ITEM	UNIT	1000 ROADWAY
* 78001110	PAINT PAVEMENT MARKING LINE 4"	FOOT	200382
* 78001130	PAINT PAVEMENT MARKING LINE 6"	FOOT	23685
* 78001140	PAINT PAVEMENT MARKING - LINE 8"	FOOT	920
* 78001150	PAINT PAVEMENT MARKING - LINE 12"	FOOT	480
* 78001180	PAINT PAVEMENT MARKING - LINE 24"	FOOT	68
* 78100100	RAISED REFLECTIVE PAVEMENT MARKER	EACH	606
* 78200300	PRISMATIC CURB REFLECTOR	EACH	16
78300200	RAISED REFLECTIVE PAVEMENT MARKER REMOVAL	EACH	606
X0322729	MATERIAL TRANSFER DEVICE	TON	12572

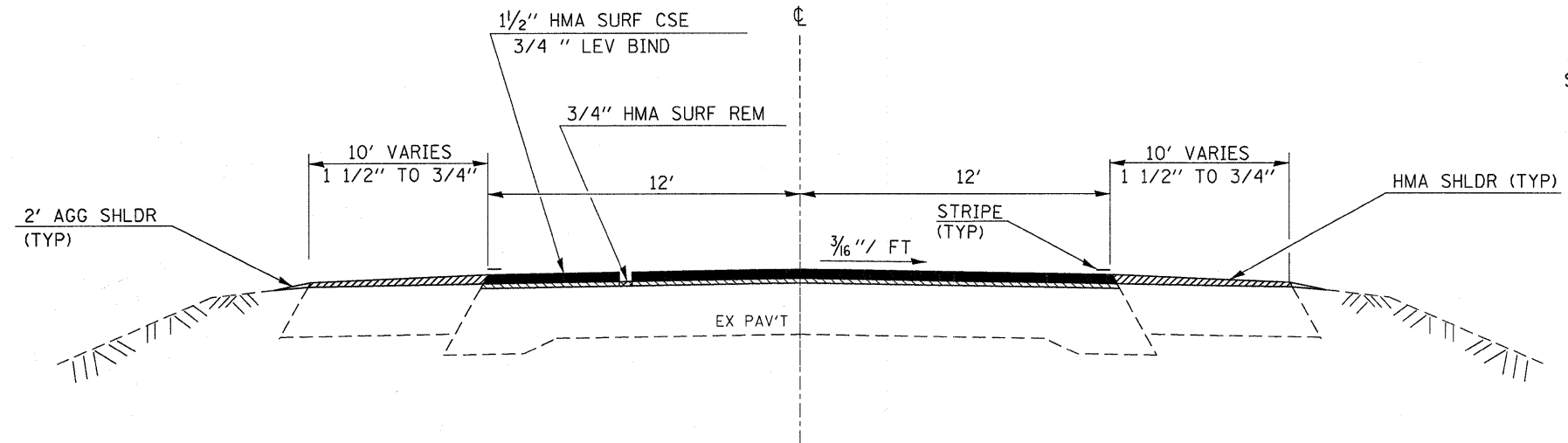
* SPECIALTY ITEMS



TYPICAL SECTION #1
 STA 424+50 TO STA 517+00
 STA 526+00 TO STA 660+53
 OMISSION STA 660+53 TO STA 662+47
 STA 662+47 TO STA 710+53



TYPICAL SECTION #2
 STA 517+00 TO STA 526+00



TYPICAL SECTION #3
 STA 710+53 TO STA 894+80

MIX DESIGN					
MIX	PG GRADE	DESIGN AIR VOIDS	MIX COMPOSITION	FRICTION AGG	DENSITY CONTROL
HMA SURFACE	PG 64-22	4.0% @N50	IL 12.5 OR IL 9.5	MIXTURE C	CORRELATION
HMA LEVEL BINDER	PG 64-22	4.0% @N50	IL 9.5		SATISFACTION OF THE ENGINEER
HMA SHLDR	PG 58-22	4.0% @N50	IL 9.5		SATISFACTION OF THE ENGINEER

FILE NAME =	USER NAME = carpenterdj	DESIGNED -	REVISED -
c:\pwork\FW1DDT\CARPENTERDJ\d0122635	d366929-sht-details.DGN	DRAWN -	REVISED -
	PLOT SCALE = 50.0000' / IN.	CHECKED -	REVISED -
	PLOT DATE = Feb 08, 2010 - 08:36:01 AM	DATE -	REVISED -

**STATE OF ILLINOIS
 DEPARTMENT OF TRANSPORTATION**

TYPICAL SECTIONS				
SCALE:	SHEET NO.	OF SHEETS	STA.	TO STA.

F.A.P. RTE.	SECTION	COUNTY	TOTAL SHEETS	SHEET NO.
68	(3)RS-6	LASALLE	13	4
CONTRACT NO. 66929				
[ILLINOIS] FED. AID PROJECT				

SIDEROAD AND ENTRANCE SCHEDULE													
LOCATION		DESCRIPTION	TYPE	WIDTH	AREA	BIT	AGG	INC	HMA SURF	HMA SURF	AGG	BIT SURF	TEMP
				(END)		MATLS	(PR CT)	HMA	RE	RE	SURF	TY B	REM
				FOOT	SQ YD	(PR CT)	TON	TON	3/4"	2 1/4"	TON	SQ YD	SQ YD
441+16	LT	E 1750TH RD	HMA	24	123	9.8	0.2	10.3	70			53	13.3
476+80	RT	E 18TH RD	HMA	24	123	9.8	0.2	10.3	70			53	13.3
523+12.88	RT	US 52E (SEE MAINLINE)	HMA										
524+61	LT	38TH RD	HMA	24	123	9.8	0.2	15.5		70		53	13.3
546+65	RT	PE/MBTO	AGG	14									
559+17	RT	CE/MBTO	HMA/CONC	20	93	7.4	0.2	7.8	93				
560+40	RT	PE/MBTO	HMA/CONC	14	93	7.4	0.2	7.8	93			93	
560+75	RT	PE	CONC	14	27	2.2	0.1	2.3					
584+50	RT	MBTO	HMA	14	93	7.4	0.2	7.8	93				
585+71	LT	PE/MBTO	HMA/AGG	14	62	5.0	0.1	5.2	62		0.7		
586+78	LT	PE/MBTO	HMA/AGG	14	62	5.0	0.1	5.2	62		0.7		
586+78	RT	PE	HMA/AGG	24	93	7.4	0.2	7.8	93		1.1		
588+80	RT	PE	AGG	14	27	2.2	0.1	2.3	27		0.7		
628+97	RT	N 40TH RD	HMA	24	123	9.8	0.2	10.3	70			53	13.3
631+62	LT	N 40TH RD	HMA	24	123	9.8	0.2	10.3	70			53	13.3
649+42	RT	PE	AGG	14	27	2.2	0.1	2.3			0.7		
654+00	RT	PE	HMA	24	38	3.0	0.1	3.2	38			11	
658+29	LT	N 4050TH RD	HMA/AGG	24	123	9.8	0.2	10.3	123		1.1		
663+70	LT	PE/MBTO	AGG	24	78	6.2	0.2	6.6	78		1.1		
663+70	RT	MBTO	HMA	93	7.4	0.2	7.8	93					
673+40	LT	PE	HMA/AGG	24	62	5.0	0.1	5.2	62		1.1		
673+80	RT	PE	HMA/AGG	14	62	5.0	0.1	5.2	62		0.7		
674+00	LT	PE/MBTO	HMA/AGG	14	93	7.4	0.2	7.8	93		0.7		
674+50	LT	PE/MBTO	HMA/AGG	15	93	7.4	0.2	7.8	93		0.7		
674+85	RT	PE	AGG	14	27	2.2	0.1	2.3			0.7		
682+27	RT	N 41ST RD	HMA/AGG	24	123	9.8	0.2	10.3	123		1.1		
682+30	LT	PE	AGG	24	38	3.0	0.1	3.2			1.1		
686+40	LT	PE	HMA/AGG	14	62	5.0	0.1	5.2	62		0.7		
686+40	RT	MBTO	HMA	93	7.4	0.2	7.8	93					
704+14	RT	PE/MBTO	HMA/AGG	14	93	7.4	0.2	7.8	93		0.7		
710+53	LT	N 4101ST RD	HMA/AGG	24	123	9.8	0.2	15.5	70			53	13.3
712+00	LT	CE	AGG	30							1.4		
737+82	LT	N 42ND RD	HMA	24	123	9.8	0.2	10.3	70			53	13.3
737+82	RT	N 42ND RD	HMA	24	123	9.8	0.2	10.3	70			53	13.3
752+88	RT	PE	AGG	14							0.7		
754+20	RT	PE	AGG	14							0.7		
761+92	LT	PE	AGG	14							0.7		
766+91	RT	PE	AGG	14							0.7		
768+40	RT	PE	AGG	14							0.7		
771+60	RT	PE	HMA	20	9	0.7	0.0	0.8			0.9	9	
774+80	RT	PE	AGG	14							0.7		
777+40	RT	PE	CONC	20	9	0.7	0.0	0.8			0.9		
782+50	RT	CE	AGG	24							1.1		
788+34	LT	N 4253RD RD	HMA	24	123	9.8	0.2	10.3	70			53	13.3
788+34	RT	N 4253RD RD	HMA	24	123	9.8	0.2	10.3	70			53	13.3
815+44	LT	PE	AGG	14							0.7		
819+60	RT	CE	AGG	14							0.7		
830+20	LT	PE	AGG	14							0.7		
832+76	LT	PE	AGG	14							0.7		
835+00	LT	PE	AGG	14							0.7		
839+60	LT	PE	AGG	14							0.7		
843+73	LT	N 44TH RD	HMA/AGG	24	123	9.8	0.2	15.5	70			53	13.3
843+73	RT	N 44TH RD	HMA	24	123	9.8	0.2	10.3	123			53	13.3
857+08	RT	PE	AGG	14							0.7		
866+85	LT	PE	AGG	14							0.7		
870+10	LT	PE	AGG	14							0.7		
871+80	LT	PE	AGG	14							0.7		
873+95	LT	PE	AGG	14							0.7		
876+50	LT	PE	AGG	14							0.7		
878+10	RT	PE	HMA	14	27	2.2	0.1	2.3	27			6	
878+60	LT	PE	HMA	14	27	2.2	0.1	2.3	27			6	
881+50	LT	PE	HMA	14	27	2.2	0.1	2.3	27			6	
885+10	LT	PE	AGG	14							0.7		
TOTAL						257.8	6.5	286.7	2440	70	31.2	767	159.6

RESURFACING SCHEDULE														
LOCATION	LENGTH	PVMT AREA	HMA SURF CSE	LEVEL BINDER (MM)	HMA SURF REM 3/4"	HMA SURF REM 2-1/4"	HMA SURF REM BUTT JT	TEMP RAMP	BIT MAT (PR CT)	AGG (PR CT)	MIX FOR CRACKS, JOINTS & FLGWYS	LEVEL BINDER (HM)	HMA SHLDR	AGG SHLD WEDGE TY B
STA TO STA	FOOT	SQ YD	TON	TON	SQ YD	SQ YD	SQ YD	SQ YD	GALLON	TON	TON	TON	TON	TON
424+50 TO 516+40	9190	30633.3	2573	1287	30533.0		100	6.7	3982	122.5	9.19	15.32		523.3
516+40 TO 517+00 MILLING TAPER	60	2144.1	180	90		2144		6.7	279	8.6	0.64	1.07		3.4
517+00 TO 526+00 *	900	4944.1	415	208		4944		20	643	19.8	1.48	2.47		
526+00 TO 526+60 MILLING TAPER	60	2144.1	180	90		2144		6.7	279	8.6	0.64	1.07		3.4
526+60 TO 660+53	13393	44643.3	3750	1875	44543.0		100	6.7	5804	178.6	13.39	22.32		762.7
SN 050-0159-OMISSION 660+53 TO 662+47	194													
662+47 TO 710+53	4806	16020.0	1346	673	15920.0		100	6.7	2083	64.1	4.81	8.01		273.7
710+53 TO 894+80	18427	49138.7	4128	2064	49039.0		100	6.7	6388	196.6	14.74	24.57	2580	699.5
TOTAL			12572	6287	140035	9232	400	60.2	19458	598.8	44.89	74.8	2580	2266.0

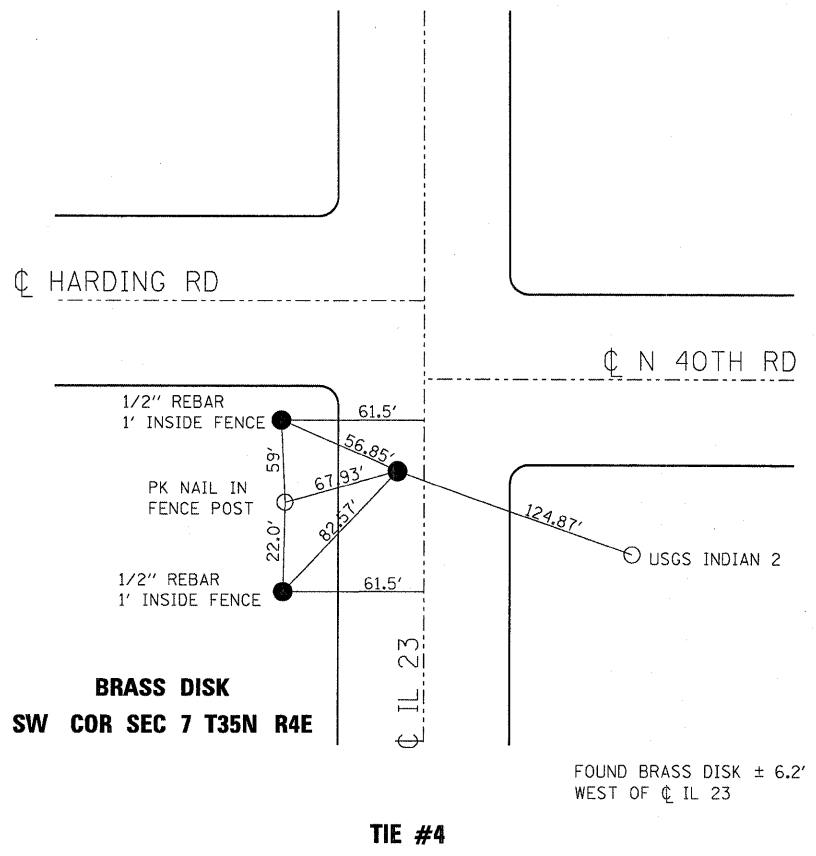
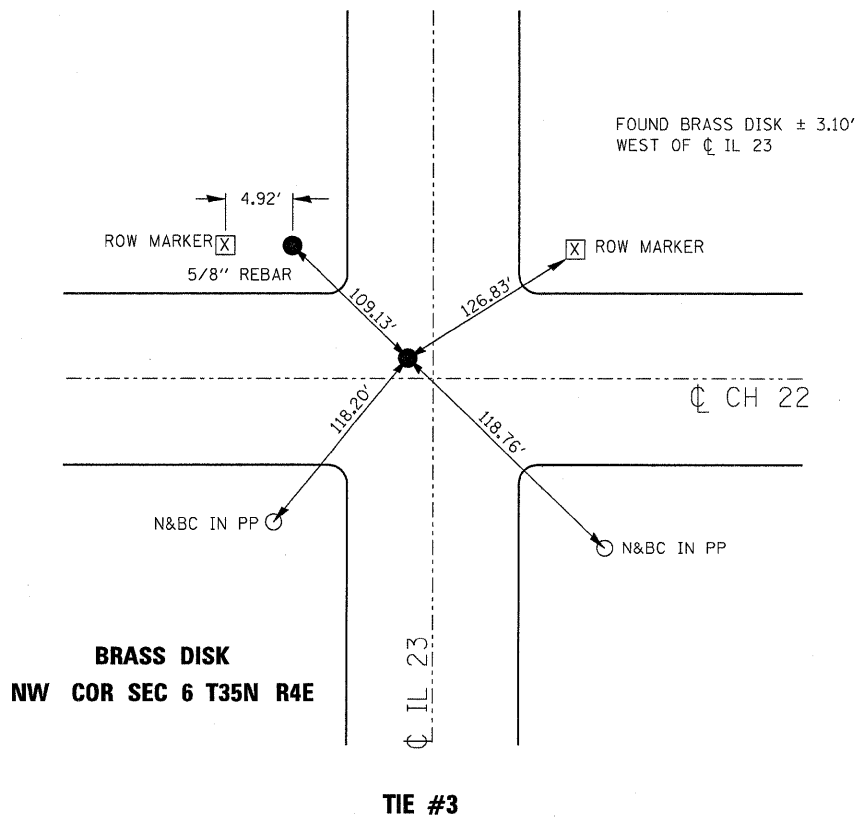
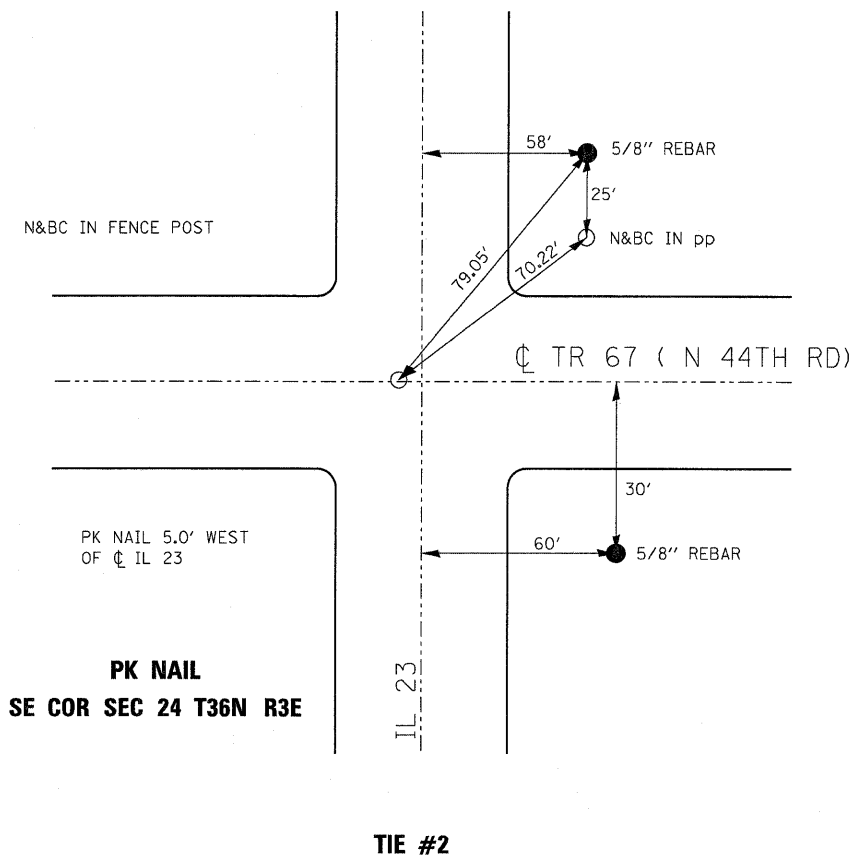
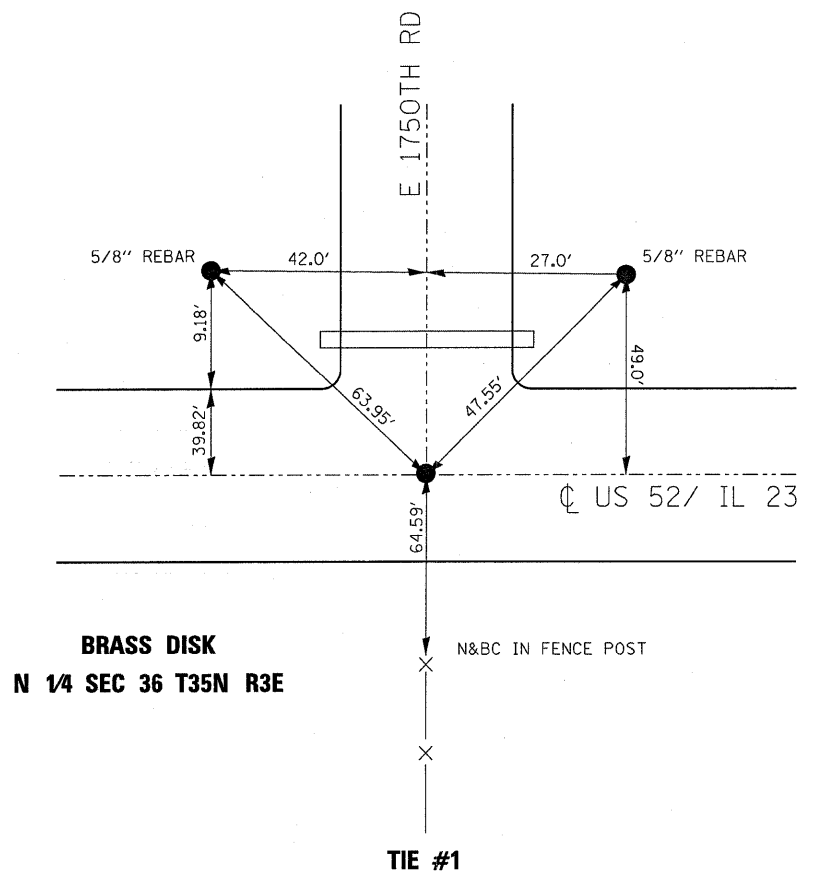
* US 52(E) SHALL BE MILLED AND RESURFACED FROM STATION 0+00 TO STATION 3+50

PAVEMENT MARKING SCHEDULE														
LOCATION	LENGTH	PAINT PAVEMENT MARKING 4"		PAINT PVMT MARK 6"	PAINT PVMT MARK 8"	PAINT PVMT MARK 12"	PAINT PVMT MARK 24"	PAINT PVMT MARK LETTERS & SYMB	RAISED REFLECT PVMT MARK	RAISED REFLECT PVMT MARK REM	PRISMATIC CURB REFLECT	SHORT TERM PVMT MARK	WORK ZONE PVMT MARK REM	
		WHITE FOOT	YELLOW FOOT	YELLOW FOOT	WHITE FOOT	WHITE FOOT	WHITE FOOT	SQ FT	EACH	EACH	EACH	FOOT	SQ FT	
IL 23:														
424+50 TO 660+53	23603	94412	6082	11802					295	295		7081	786	
SN 050-0159-OMISSION 660+53 TO 662+47	194	776		97								58	6	
662+47 TO 710+53	4806	19224	4828	2403					60	60		1442	160	
710+53 TO 894+80	18427	73708		9214					230	230		5528	614	
US 52 (E):									0	0				
0+12 TO 3+50	338	1352		169	920	480	68	62.4	21	21	16	101	11	
SUBTOTAL		189472	10910	23685	920	480	68	62.4	606	606	16	14210	1577	
PROJECT TOTAL		200382		23685	920	480	68	62.4	606	606	16	14210	1577	

THE PERMANENT PAVEMENT MARKING SHALL BE APPLIED TWICE TO INCREASE THE THICKNESS. ADDITIONAL QUANTITY HAS BEEN INCLUDED.

SEEDING SCHEDULE								
SIDEROAD OR DESCRIPTION	STATION	SIDE	SEEDING CL 2	FURN EXC	EROSION CONTROL BLANKET	NIT FERT NUT	PHOS FERT NUT	POT FERT NUT
			ACRE	CU YD	SQ YD	LB	LB	LB
E 1750TH RD	441+16	LT	0.01	1.5	52	0.9	0.9	0.9
E 18TH RD	476+80	RT	0.01	1.5	52	0.9	0.9	0.9
US 52E	523+12.88	RT	0.01	1.5	52	0.9	0.9	0.9
38TH RD	524+61	LT	0.01	1.5	52	0.9	0.9	0.9
PE/MBTO	546+65	RT	0.01	1.5	56	0.9	0.9	0.9
PE/MBTO	559+17	RT	0.01	1.5	56	0.9	0.9	0.9
PE/MBTO	560+40	RT	0.01	1.5	56	0.9	0.9	0.9
MBTO	584+50	RT	0.01	1.5	56	0.9	0.9	0.9
PE/MBTO	585+71	LT	0.01	1.5	56	0.9	0.9	0.9
PE/MBTO	586+78	LT	0.01	1.5	56	0.9	0.9	0.9
N 40TH RD	628+97	RT	0.01	1.5	52	0.9	0.9	0.9
N 40TH RD	631+62	LT	0.01	1.5	52	0.9	0.9	0.9
N 4050TH RD	658+29	LT	0.01	1.5	52	0.9	0.9	0.9
PE/MBTO	663+70	LT	0.01	1.5	52	0.9	0.9	0.9
MBTO	663+70	RT	0.01	1.5	56	0.9	0.9	0.9
PE/MBTO	674+00	LT	0.01	1.5	56	0.9	0.9	0.9
PE/MBTO	674+50	LT	0.01	1.5	56	0.9	0.9	0.9
N 41ST RD	682+27	RT	0.01	1.5	52	0.9	0.9	0.9
MBTO	686+40	RT	0.01	1.5	56	0.9	0.9	0.9
PE/MBTO	704+14	RT	0.01	1.5	56	0.9	0.9	0.9
N 4101ST RD	710+53	LT	0.01	1.5	52	0.9	0.9	0.9
N 42ND RD	737+82	LT	0.01	1.5	52	0.9	0.9	0.9
N 42ND RD	737+82	RT	0.01	1.5	52	0.9	0.9	0.9
N 4253RD RD	788+34	LT	0.01	1.5	52	0.9	0.9	0.9
N 4253RD RD	788+34	RT	0.01	1.5	52	0.9	0.9	0.9
N 44TH RD	843+73	LT	0.01	1.5	52	0.9	0.9	0.9
N 44TH RD	843+73	RT	0.01	1.5	52	0.9	0.9	0.9
TOTAL			0.27	40.5	1448	24.3	24.3	24.3

TEMPORARY PAVEMENT MARKING SCHEDULE									
LOCATION	LENGTH	TEMPORARY PAVEMENT MARKING 4"		TEMP PVMT MARK 6"	TEMP PVMT MARK 8"	TEMP PVMT MARK 12"	TEMP PVMT MARK 24"	TEMP PVMT MARK LETTERS & SYMB	
		WHITE FOOT	YELLOW FOOT	YELLOW FOOT	WHITE FOOT	WHITE FOOT	WHITE FOOT	SQ FT	
IL 23:									
424+50 TO 660+53	23603	47206	3041	5901					
SN 050-0159-OMISSION 660+53 TO 662+47	194	388		49					
662+47 TO 710+53	4806	9612	2414	1202					
710+53 TO 894+80	18427	36854		4607					
US 52 (E):									
0+12 TO 3+50	338	676		169	460	240	34	31.2	
SUBTOTAL		94736	5455	11928	460	240	34	31.2	
PROJECT TOTAL		100191		11928	460	240	34	31.2	

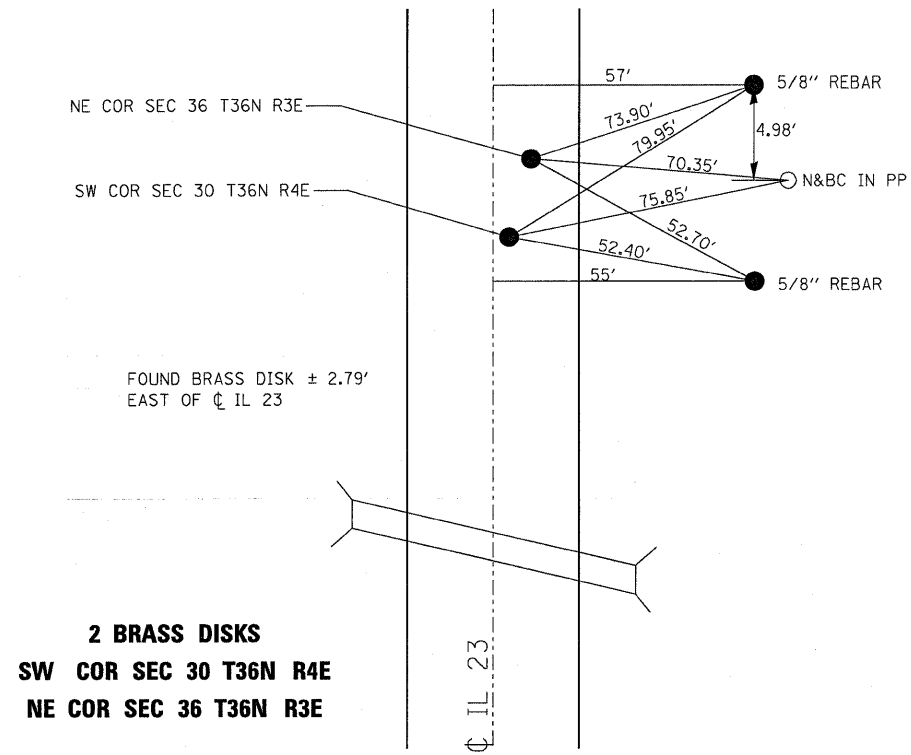


FILE NAME =	USER NAME = carpenterdj	DESIGNED -	REVISED -
c:\pw\work\PIWIDOT\CARPENTERDJ\d0122635	d366929-shd-details.DGN	DRAWN -	REVISED -
	PLOT SCALE = 50.0000' / IN.	CHECKED -	REVISED -
	PLOT DATE = Feb 08, 2010 - 08:35:34 AM	DATE -	REVISED -

**STATE OF ILLINOIS
DEPARTMENT OF TRANSPORTATION**

TIE POINTS				
SCALE:	SHEET NO.	OF SHEETS	STA.	TO STA.

F.A.P. RTE.	SECTION	COUNTY	TOTAL SHEETS	SHEET NO.
68	(3)RS-6	LASALLE	13	7
CONTRACT NO. 66929				
ILLINOIS FED. AID PROJECT				



2 BRASS DISKS
SW COR SEC 30 T36N R4E
NE COR SEC 36 T36N R3E

TIE #5

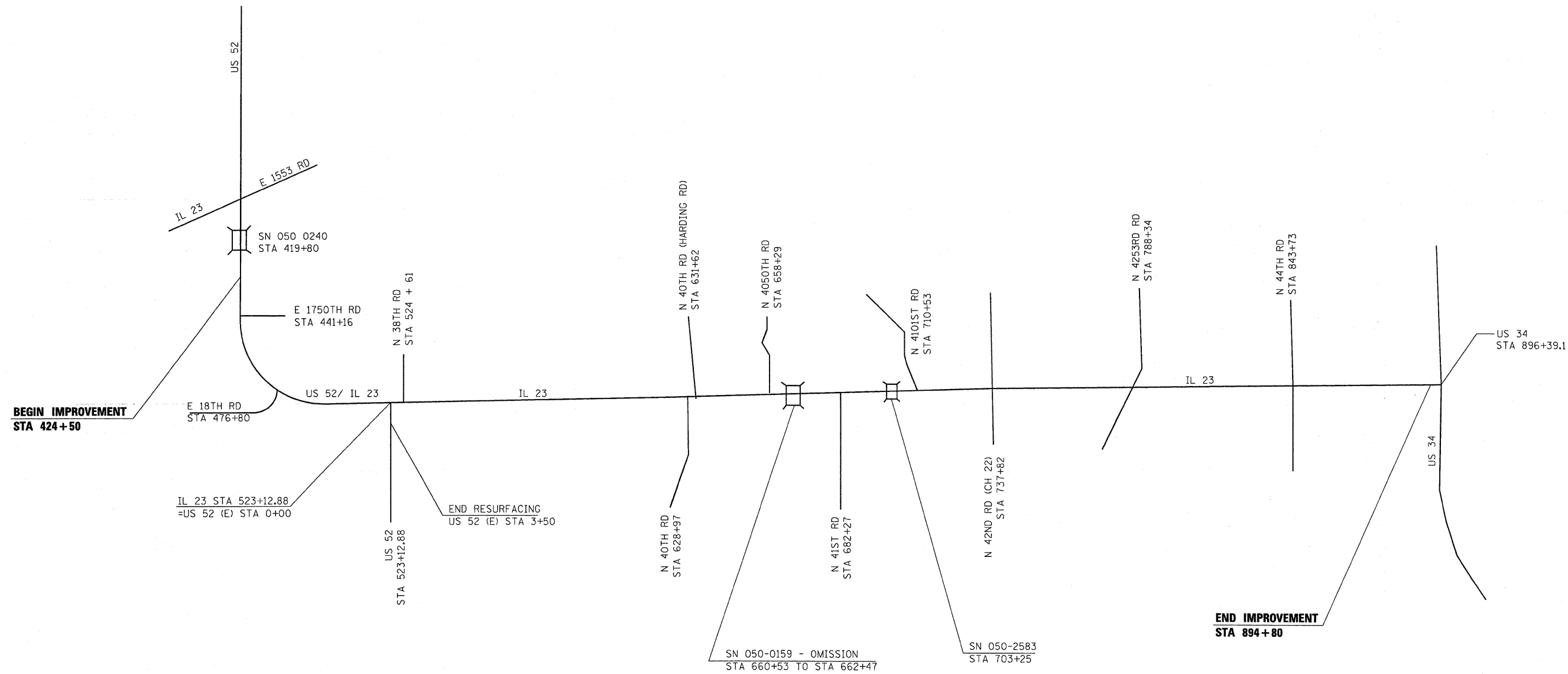
	STATION	DESCRIPTION	EXIST MONUMENT TYPE	PROP MONUMENT TYPE	MONUMENT RECORD TO BE RECORDED	RESPONSIBILITY
TIE #1	N/A	N 1/4 SEC 36 T35N R3E (MONUMENT RECORD)	BRASS DISK	TYPE 1 PLAQUE	YES	2
TIE #2	N/A	SE COR SEC 24 T36N R3E (NON-VERIFIED)	PK NAIL	PK NAIL	NO	1
TIE #3	N/A	NW COR SEC 6 T35N R4E (NON-VERIFIED)	BRASS DISK	TYPE 1 PLAQUE	NO	1
TIE #4	N/A	SW COR SEC 7 T35N R4E (NON-VERIFIED)	BRASS DISK	TYPE 1 PLAQUE	NO	1
TIE #5	N/A	SW COR SEC 30 T36N R4E NE COR SEC 36 T36N R3E (NON-VERIFIED)	2 BRASS DISKS	(BOTH)TYPE 1 PLAQUE	NO	1

NOTE: FOR ALL MONUMENT LOCATIONS, SEE TIE SKETCHES

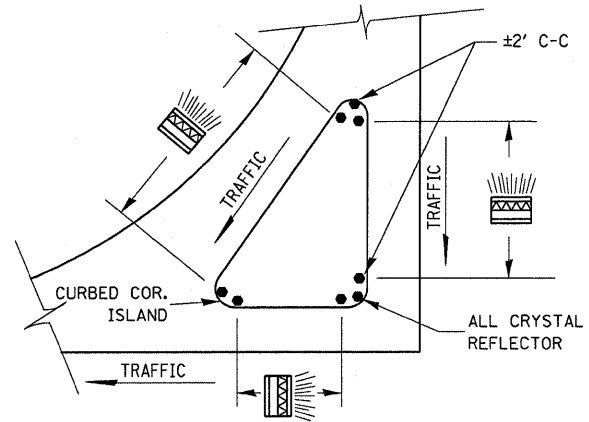
- 1) RESIDENT TO RE-ESTABLISH MONUMENT
- 2) RESIDENT TO RE-ESTABLISH MONUMENT AND FURNISH TIE SKETCHES TO D-3 PLATS AND PLANS
- 3) PROFESSIONAL LAND SURVEYOR TO RE-ESTABLISH MONUMENT, RECORD NEW MONUMENT RECORD AND PROVIDE COPY TO D-3 PLATS AND PLANS (PAY ITEM REQUIRED)



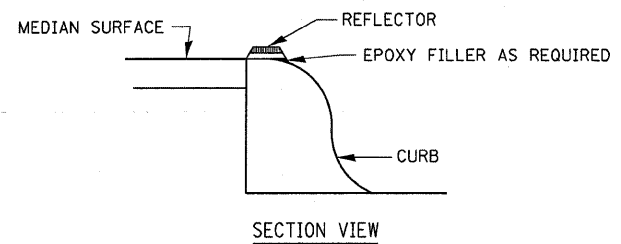
N.T.S.



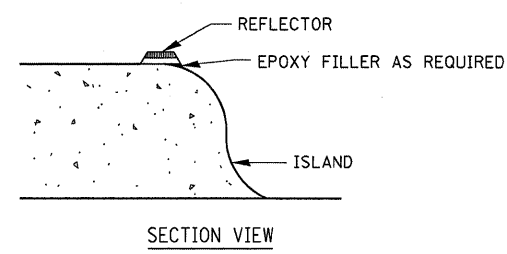
FILE NAME = c:\pwork\PWIDOT\CARPENTERDJD0122635	USER NAME = carpenterdj	DESIGNED -	REVISED -	STATE OF ILLINOIS DEPARTMENT OF TRANSPORTATION	PROJECT LAYOUT			F.A.P. RTE.	SECTION	COUNTY	TOTAL SHEETS	SHEET NO.
	d366929-shd-details.DGN	DRAWN -	REVISED -					68	(3)RS-6	LASALLE	13	9
	PLOT SCALE = 50.0000' / IN.	CHECKED -	REVISED -		SCALE: SHEET NO. OF SHEETS STA. TO STA.			CONTRACT NO. 66929				
	PLOT DATE = Feb 08, 2010 - 08:35:19 AM	DATE -	REVISED -		ILLINOIS FED. AID PROJECT							



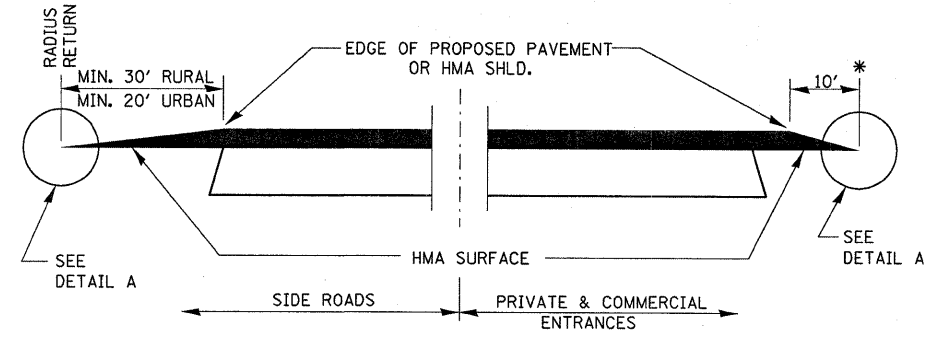
PRISMATIC REFLECTORS



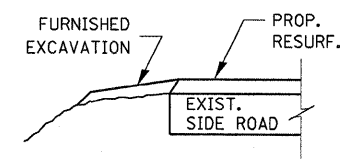
- NOTES**
1. PRISMATIC REFLECTORS SHALL BE MONO-DIRECTIONAL AND POSITIONED SO THAT THE REFLECTIVE FACE IS FACING THE APPROACHING TRAFFIC.
 2. PRISMATIC REFLECTORS SHALL BE SECURED IN PLACE WITH AN EPOXY ADHESIVE.
 3. PRISMATIC REFLECTORS SHALL BE EITHER AMBER OR CRYSTAL IN COLOR.



- NOTES**
1. PRISMATIC REFLECTORS SHALL BE MONO-DIRECTIONAL AND POSITIONED SO THAT THE REFLECTIVE FACE IS FACING THE APPROACHING TRAFFIC.
 2. PRISMATIC REFLECTORS SHALL BE SECURED IN PLACE WITH AN EPOXY ADHESIVE.
 3. PRISMATIC REFLECTORS SHALL BE EITHER AMBER OR CRYSTAL IN COLOR.

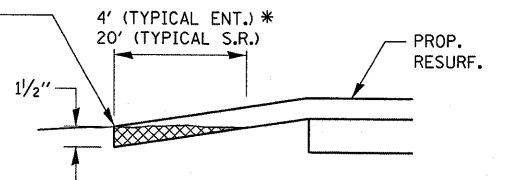


**SECTION A-A
DETAILS AT ENTRANCES & SIDE ROADS**

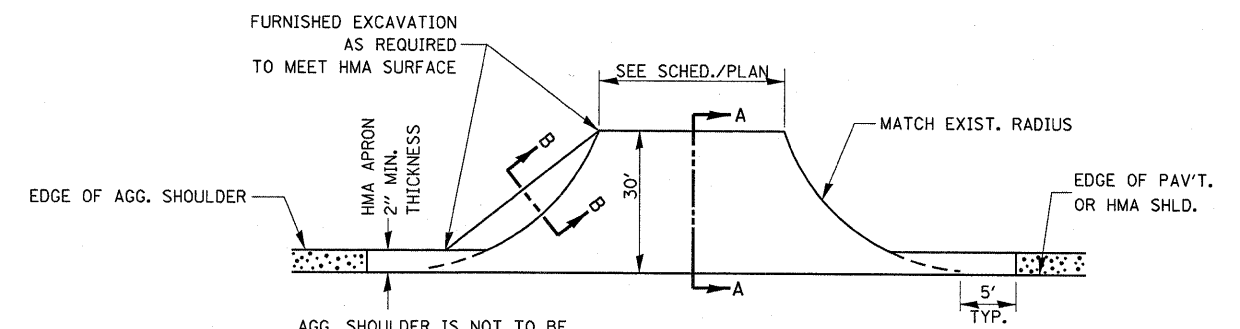


SECTION B-B

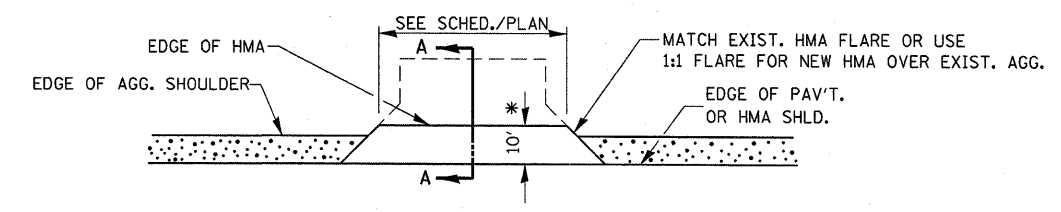
THE COST OF REMOVAL AT EXISTING HMA OR P.C.C. LOCATIONS SHALL BE PAID FOR PER SQ. YD. BY THE APPROPRIATE PAY ITEM. REMOVAL AT THE EXISTING AGG. LOCATIONS SHALL BE INCIDENTAL TO THE HMA. A-3 LOCATIONS SHALL BE FEATHER TAPERED.



DETAIL A



PLAN AT SIDE ROADS



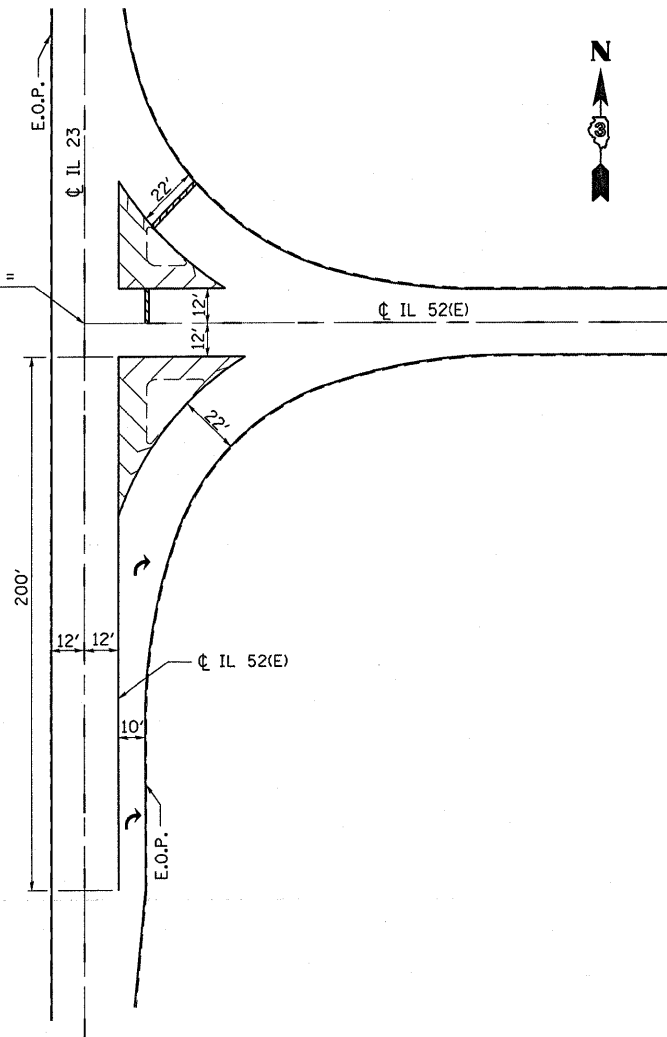
PLAN AT PRIVATE & COMMERCIAL ENTRANCES

(DO NOT RESURFACE FIELD ENTRANCES)

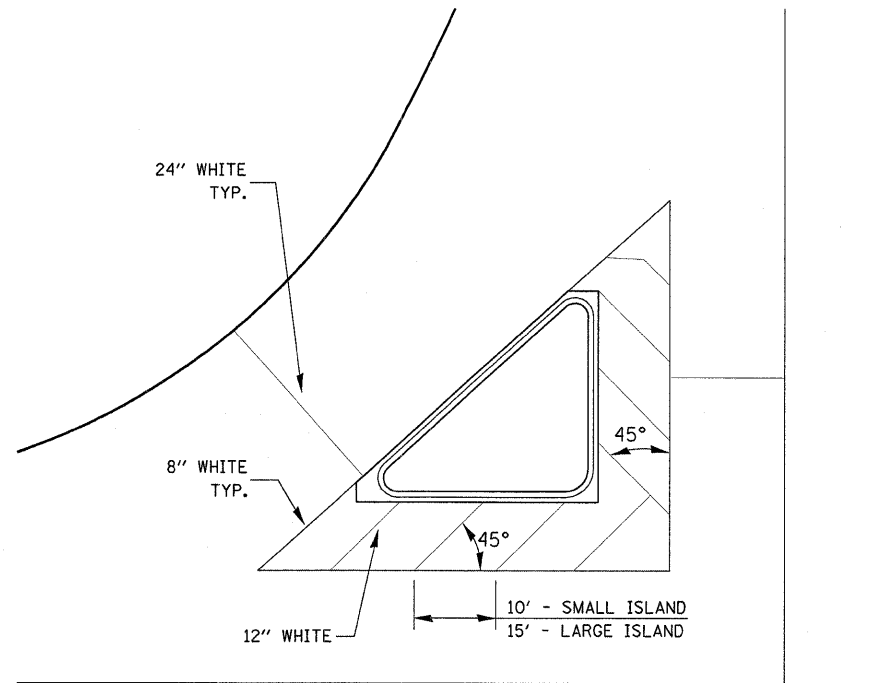
* PROPOSED HMA RESURFACING AT PUBLIC EDUCATIONAL FACILITY ENTRANCES SHALL BE EXTENDED TO THE RIGHT-OF-WAY LIMITS.

FILE NAME =	USER NAME = carpentardj	DESIGNED -	REVISED -	STATE OF ILLINOIS DEPARTMENT OF TRANSPORTATION	DETAILS	F.A.P. RTE.	SECTION	COUNTY	TOTAL SHEETS	SHEET NO.	
o:\pwork\PWIDOT\CARPENTERDJD0122635	d366929-shd-details.DGN	DRAWN -	REVISED -			68	(3)RS-6	LASALLE	13	10	
	PLOT SCALE = 50.0000' / IN.	CHECKED -	REVISED -			CONTRACT NO. 66929					
	PLOT DATE = Feb 08, 2018 - 08:35:09 AM	DATE -	REVISED -			ILLINOIS FED. AID PROJECT					
				SCALE:	SHEET NO. OF SHEETS	STA.	TO STA.				

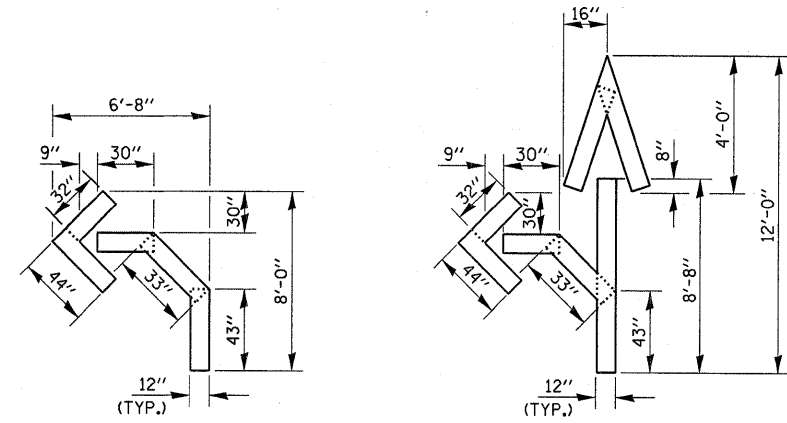
STA 523+12.88 IL 23 =
STA 0+00 US 52(E)



IL 23 /US 52(E) INTERSECTION

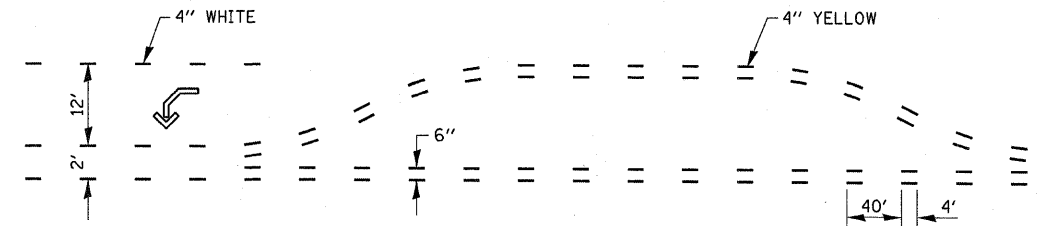


TYPICAL ISLAND



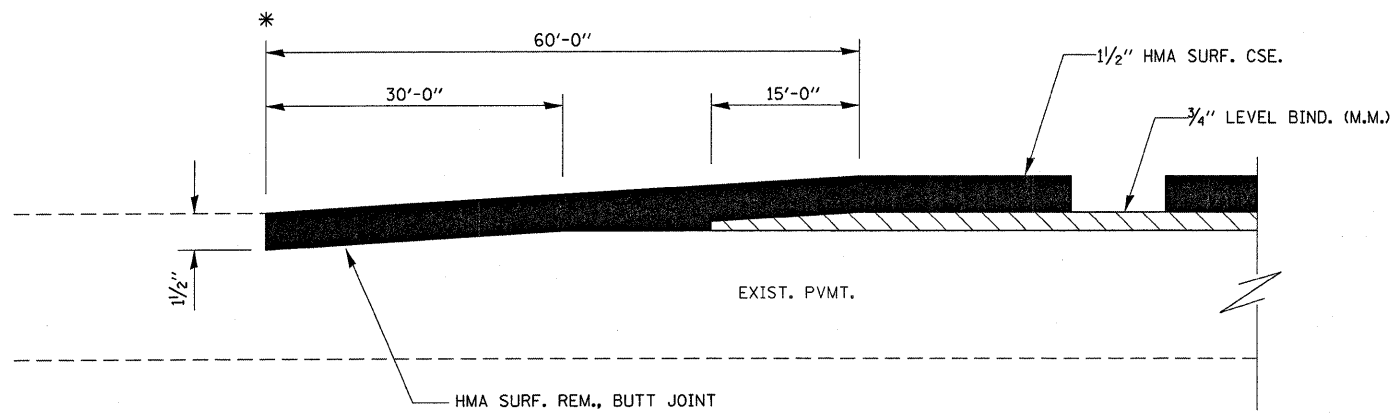
QUANTITY
12" LINE = 16 LIN. FT.
OR 4" LINE = 48 LIN. FT.

QUANTITY
12" LINE = 29 LIN. FT.
OR 4" LINE = 87 LIN. FT.



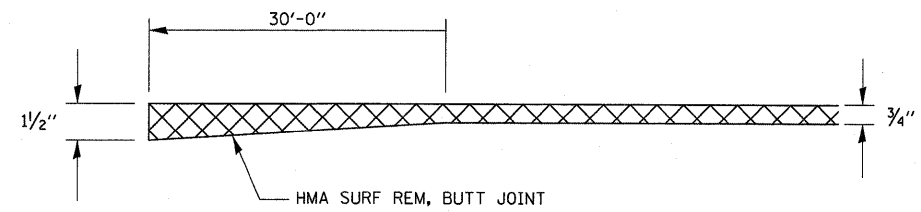
**SHORT-TERM PAVEMENT MARKING
FOR MEDIANS AND ARROWS**

FILE NAME = c:\pwork\p\WIDOT\CARPENTER\J\0122635	USER NAME = carpenterdj	DESIGNED -	REVISED -	STATE OF ILLINOIS DEPARTMENT OF TRANSPORTATION	DETAILS			F.A.P. RTE.	SECTION	COUNTY	TOTAL SHEETS	SHEET NO.
	PLOT SCALE = 50,0000' / IN.	DRAWN -	REVISED -		68	(3)RS-6	LASALLE	13	11			
PLOT DATE = Feb 08, 2010 - 08:35:00 AM	CHECKED -	REVISED -	REVISED -		SCALE:	SHEET NO.	OF SHEETS	STA.	TO STA.	CONTRACT NO. 66929		
	DATE -	REVISED -	REVISED -		ILLINOIS FED. AID PROJECT							

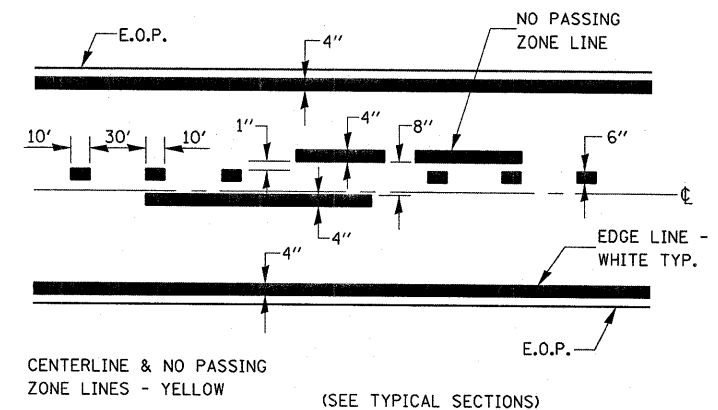


HMA TAPER AT BUTT JOINTS

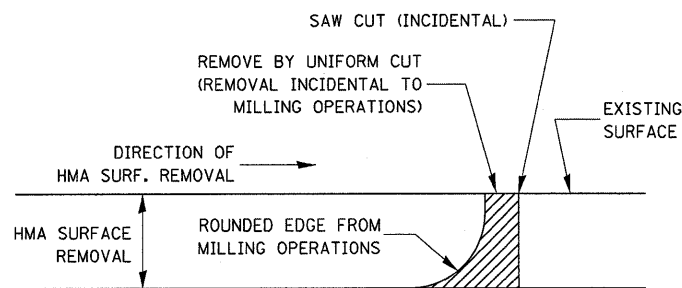
- * STA 494+20
- * STA 12+61
- * STA 66+21
- * STA 68+51
- * STA 196+45.5
- * STA 198+14.5
- * STA 80+17
- * STA 80+83
- * STA 264+23



HMA SURFACE REMOVAL - BUTT JOINT

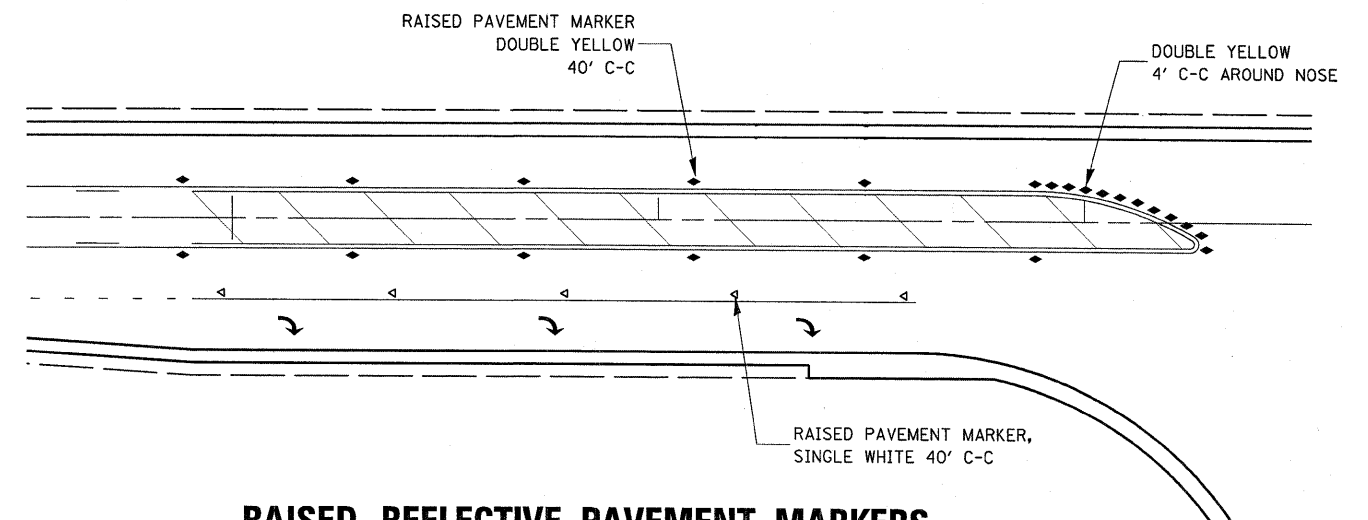


PAVEMENT MARKING



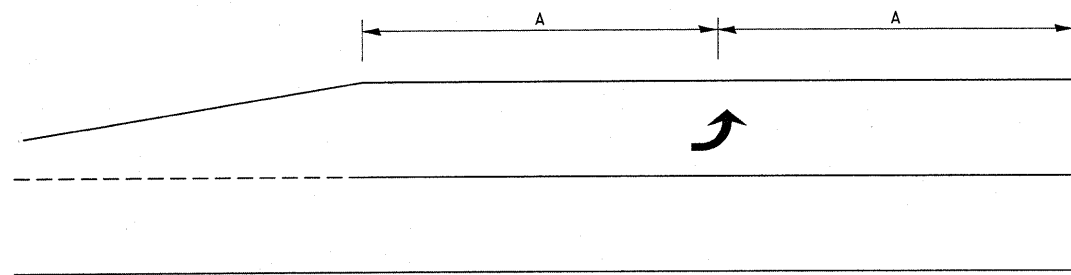
NOTE:
WHEN MILLING OPERATIONS PRODUCE A ROUNDED EDGE, THEN A SAW CUT SHALL BE USED TO MANUFACTURE A PERPENDICULAR EDGE AS SHOWN IN THE DETAIL. THE ENGINEER SHALL BE THE SOLE JUDGE CONCERNING THE USE OF THIS DETAIL.

HMA DETAIL AT BUTT JOINTS

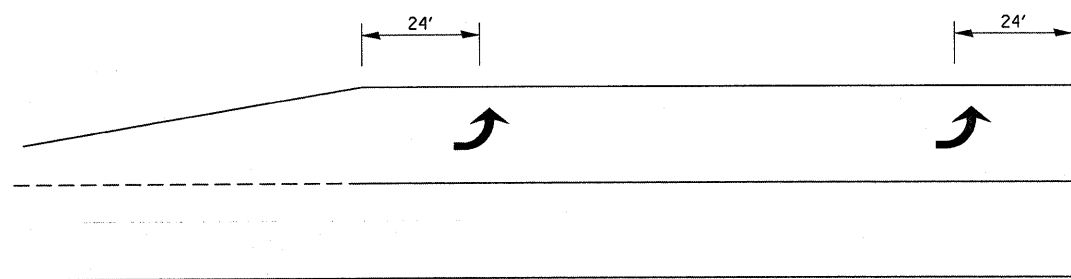


RAISED REFLECTIVE PAVEMENT MARKERS @ RIGHT TURN LANE

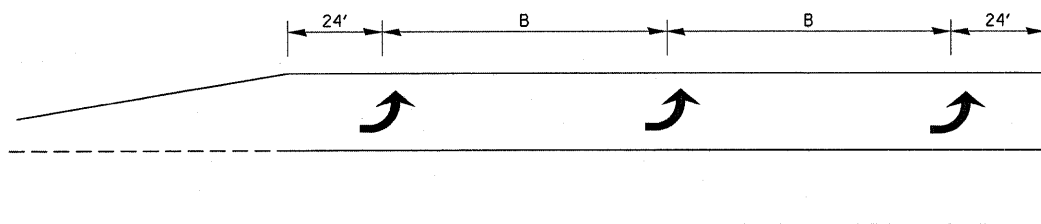
FILE NAME =	USER NAME = carpenterdj	DESIGNED -	REVISED -	STATE OF ILLINOIS DEPARTMENT OF TRANSPORTATION	DETAILS			F.A.P. RTE.	SECTION	COUNTY	TOTAL SHEETS	SHEET NO.
ct:\pw\work\PIWIDOT\CARPENTERDJ\d0122635	d366929-shr-details.DGN	DRAWN -	REVISED -					68	(3)RS-6	LASALLE	13	12
	PLOT SCALE = 50.0000' / IN.	CHECKED -	REVISED -		CONTRACT NO. 66929							
	PLOT DATE = Feb 08, 2010 - 08:34:48 AM	DATE -	REVISED -		ILLINOIS FED. AID PROJECT							



99' AND UNDER

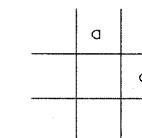
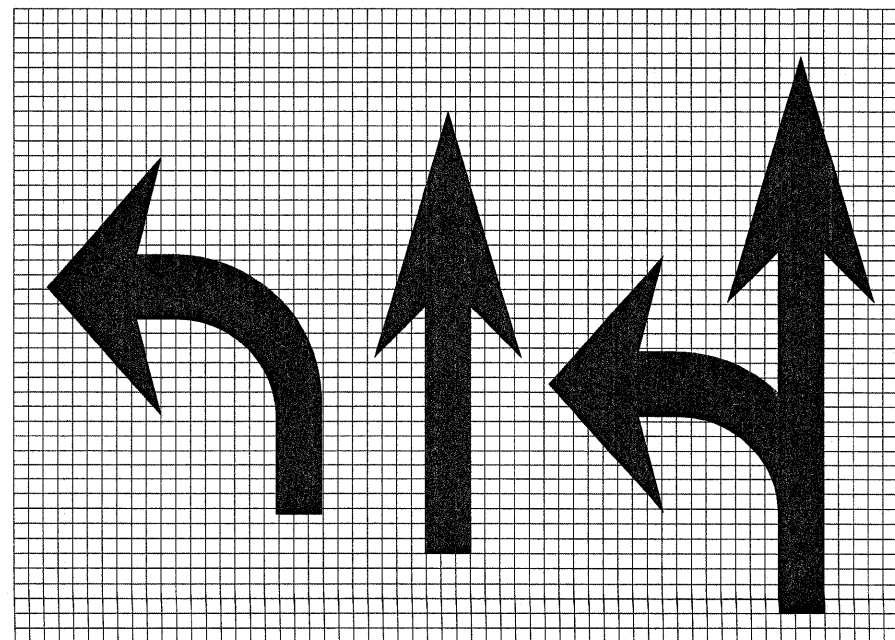
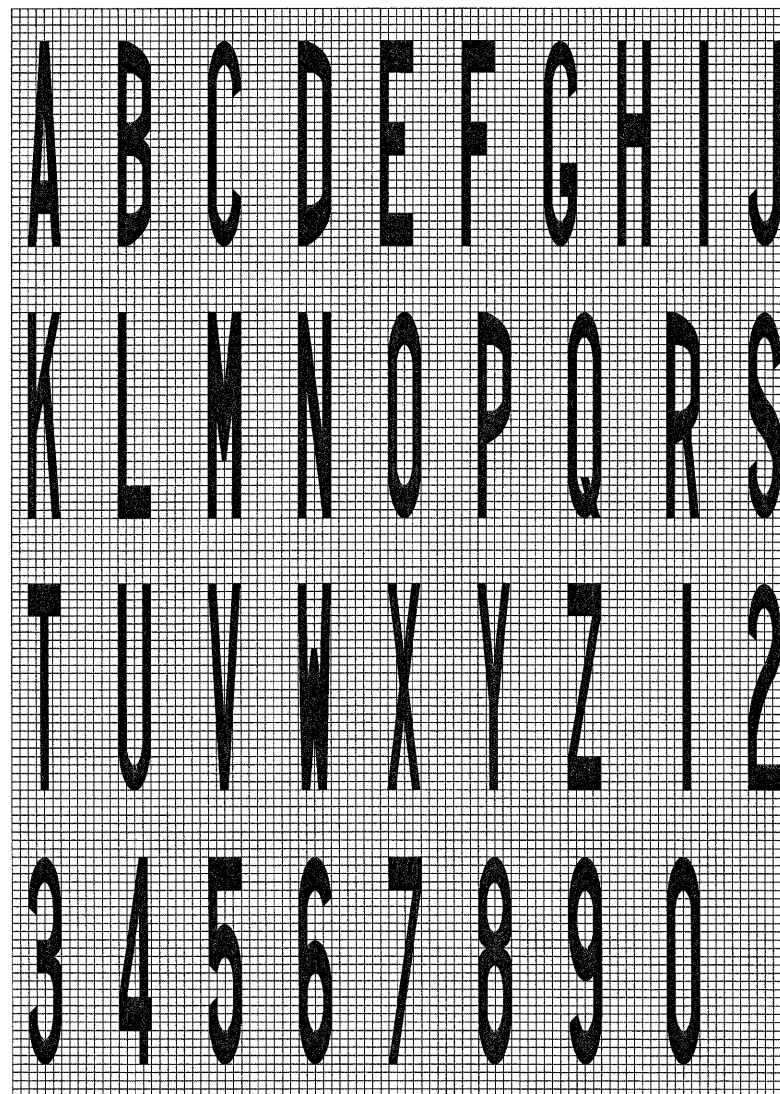


100' TO 149'



150' AND LONGER

**TYPICAL PLACEMENT OF ARROWS
IN TURN LANES**



LEGEND HEIGHT	ARROW SIZE	a
6'	SMALL	2.9
8'	LARGE	3.8

THE SPACE BETWEEN ADJACENT LETTERS OR NUMERALS SHOULD BE APPROXIMATELY 3' FOR 6' LEGEND AND 4' FOR 8' LEGEND.

LETTER AND ARROW GRID SCALE