

**STATE OF ILLINOIS**  
**DEPARTMENT OF TRANSPORTATION**  
**DIVISION OF HIGHWAYS**  
**PROPOSED**  
**HIGHWAY PLANS**

**FAP 681 (IL 116 & US45)**  
**SECTION (117, 118)RS-3**

**3P MILLING AND RESURFACING**  
**IROQUOIS COUNTY**

C-93-066-09

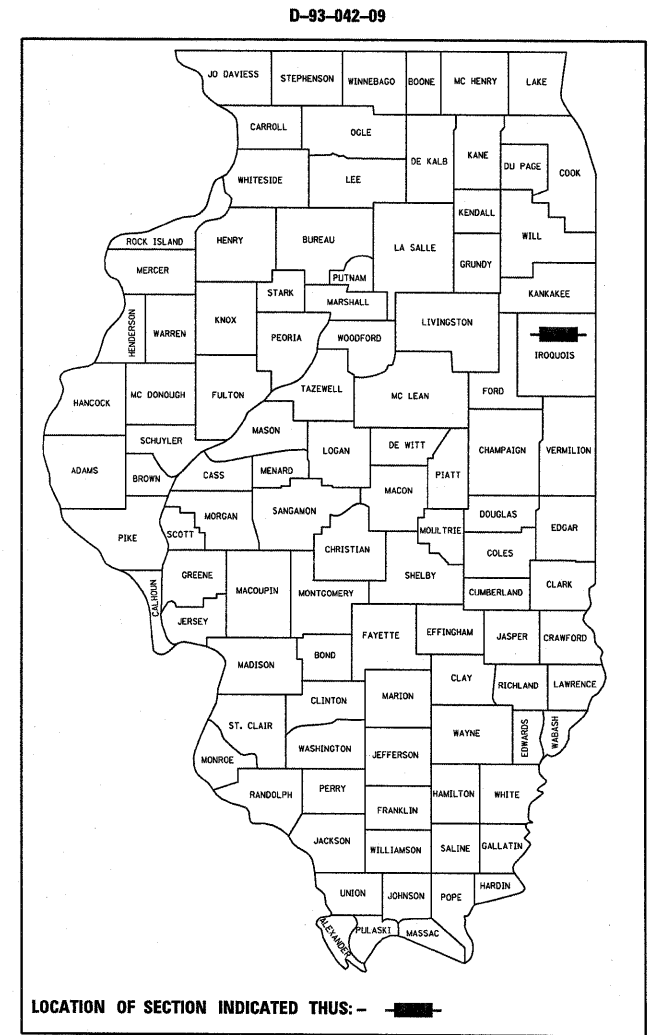
F.A.P. RTE.	SECTION	COUNTY	TOTAL SHEETS	SHEET NO.
681	(117, 118)RS-3	IROQUOIS	11	1
		ILLINOIS	CONTRACT NO. 66931	

**INDEX OF SHEETS**

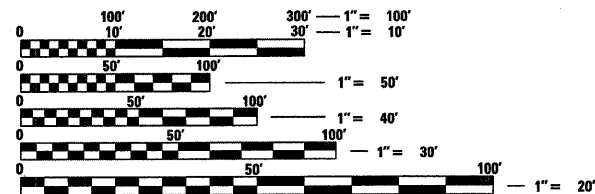
1	COVER SHEET
2	GENERAL NOTES AND LOCATION MAP
3	SUMMARY OF QUANTITIES
4	TYPICAL SECTIONS
5-6	SCHEDULES
7	SCHEMATIC
8-11	DETAILS

**STANDARDS**

000001-05	STANDARD SYMBOLS, ABBREVIATIONS AND PATTERNS
001006	DECIMAL OF AN INCH AND OF A FOOT
406201-01	MAILBOX TURNOUT
667101-01	PERMANENT SURVEY MARKERS
701001-02	OFF-ROAD OPERATIONS 2L, 2W, MORE THAN 15' (4.5 m) AWAY
701006-03	OFF-ROAD OPERATIONS 2L, 2W, 15' (4.5 m) TO 24" (600 mm) FROM PAVEMENT EDGE
701011-02	OFF-ROAD MOVING OPERATIONS 2L, 2W, DAY ONLY
701201-03	LANE CLOSURE, 2L, 2W, DAY ONLY, FOR SPEEDS ≥ 45 MPH
701301-03	LANE CLOSURE, 2L, 2W, SHORT TIME OPERATIONS
701306-02	LANE CLOSURE, 2L, 2W, SLOW MOVING OPERATIONS DAY ONLY, FOR SPEEDS ≥ 45 MPH
701311-03	LANE CLOSURE, 2L, 2W, MOVING OPERATIONS - DAY ONLY
701901-01	TRAFFIC CONTROL DEVICES



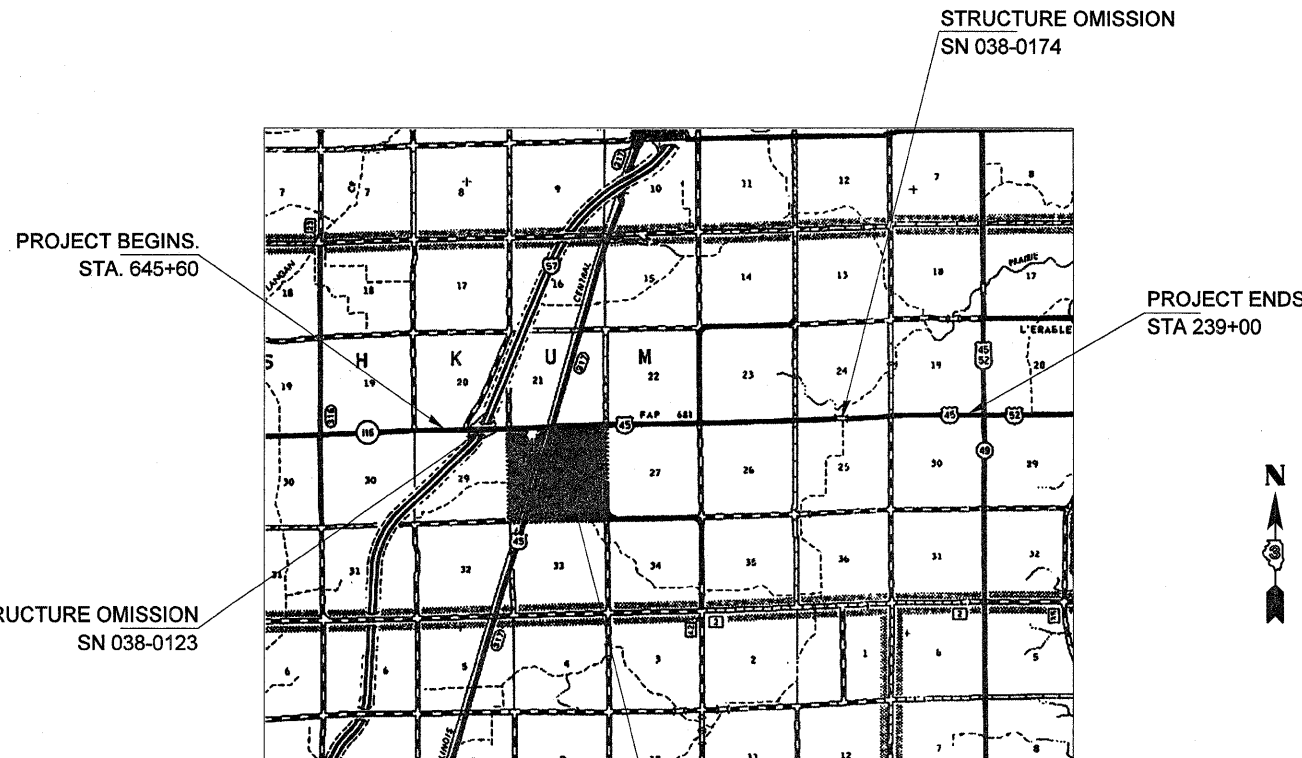
**FUNCTIONAL CLASSIFICATION - MINOR ARTERIAL**  
2007 ADT = 2,200  
P.V. = 85.2%  
S.U. = 9.1%  
M.U. = 5.7%



FULL SIZE PLANS HAVE BEEN PREPARED USING STANDARD ENGINEERING SCALES. REDUCED SIZED PLANS WILL NOT CONFORM TO STANDARD SCALES. IN MAKING MEASUREMENTS ON REDUCED PLANS, THE ABOVE SCALES MAY BE USED.

J.U.L.I.E.  
JOINT UTILITY LOCATION INFORMATION FOR EXCAVATION  
1-800-892-0123  
OR 811

**PROJECT ENGINEER: JOE KANNEL**  
**UNIT CHEIF: PAT BRABOY /NATHAN SELL**  
**TOWNSHIP: ASHKUM**  
**CONTRACT NO. 66931**



STA. EQUATION  
IL 116 STA. 698+02 = 0+00 US 45

GROSS LENGTH = 29,172 FT. = 5.53 MILE  
NET LENGTH = 28,822 FT. = 5.26 MILE

STATE OF ILLINOIS  
DEPARTMENT OF TRANSPORTATION  
DIVISION OF HIGHWAYS

SUBMITTED 01/29 2010  
*George E. Ryan*  
DEPUTY DIRECTOR OF HIGHWAYS, REGION ENGINEER

March 19, 2010  
*Scott E. Stitt P.E./e*  
ACTING ENGINEER OF DESIGN AND ENVIRONMENT

March 19, 2010  
*Christine M. Reed/e*  
DIRECTOR OF HIGHWAYS, CHIEF ENGINEER

**PRINTED BY THE AUTHORITY**  
**OF THE STATE OF ILLINOIS**