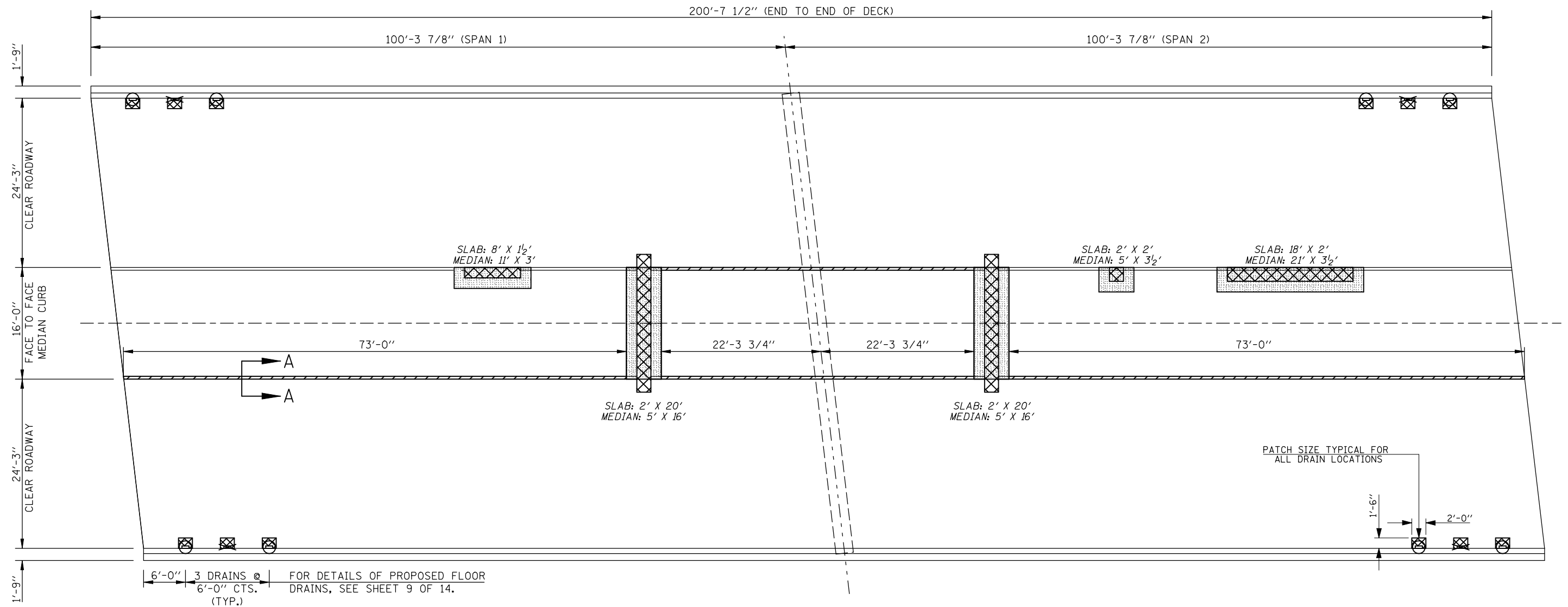


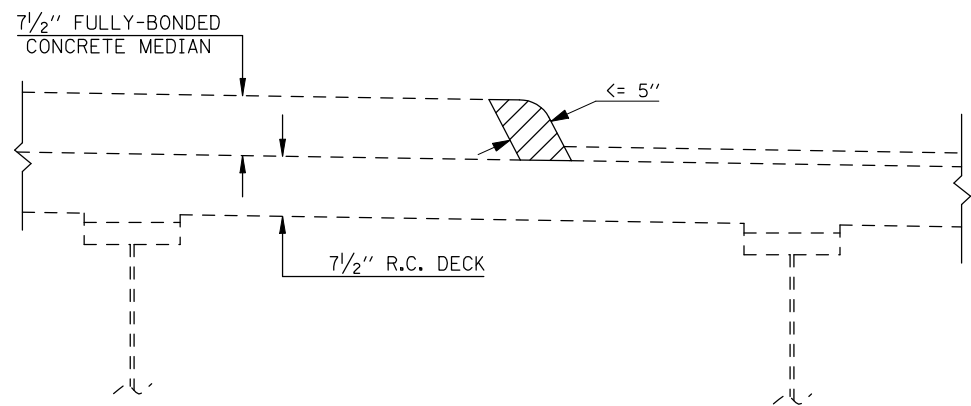
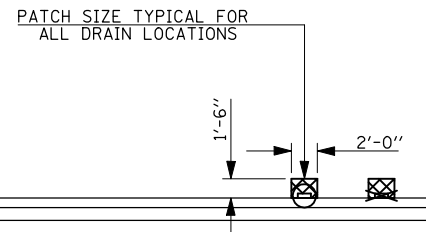
DECK SURVEY PERFORMED ON JUNE 5, 2009. IF MORE THAN ONE WINTER FREEZE-THAW CYCLE OCCURS BETWEEN THE INITIAL INSPECTION AND THE COMMENCEMENT OF WORK, THE FINAL PLAN QUANTITIES FOR DECK REPAIRS MUST BE BASED ON A NEW INSPECTION OF THE DECK.

SUPERSTRUCTURE REPAIR PLAN

S.N. 074-0055



6'-0" | 3 DRAINS @ 6'-0" CTS. (TYP.) FOR DETAILS OF PROPOSED FLOOR DRAINS, SEE SHEET 9 OF 14.



SECTION A-A

LEGEND

- CONCRETE REMOVAL & CONCRETE SUPERSTRUCTURE
- DECK SLAB REPAIR, FULL-DEPTH
- STRUCTURAL REPAIR OF CONCRETE (DEPTH EQUAL TO OR LESS THAN 5 IN.)
- EXISTING DECK DRAINS (TO BE ELIMINATED)
- EXISTING DECK DRAINS (TO BE REPLACED WITH FLOOR DRAINS)

NOTE:

EXISTING DRAINS AND EXTENSIONS SHALL BE REMOVED AND PAID FOR AS DECK SLAB REPAIR (FULL DEPTH, TY I)
 FOR DETAILS AND QUANTITIES OF CONCRETE REMOVAL, CONCRETE SUPERSTRUCTURE & REINFORCEMENT, SEE SHEET 5 OF 14.

BILL OF MATERIALS

ITEM	UNIT	TOTAL
DECK SLAB REPAIR (FULL-DEPTH, TY I)	SQ YD	4.4
DECK SLAB REPAIR (FULL-DEPTH, TY II)	SQ YD	14.2
STRUCTURAL REPAIR OF CONCRETE (DEPTH EQUAL TO OR LESS THAN 5 IN.)	SQ FT	147.0
FLOOR DRAINS	EACH	8.0

FILE NAME =	USER NAME = ppersonbr	DESIGNED - GMS	REVISED -
ct:\pw\work\p\dot\personbr\d0109687\70022-Bridge Repair Plan.dgn		DRAWN - GMS	REVISED -
	PLOT SCALE = 40.0000' / IN.	CHECKED -	REVISED -
	PLOT DATE = 2/8/2010	DATE -	REVISED -

STATE OF ILLINOIS
DEPARTMENT OF TRANSPORTATION

SUPERSTRUCTURE REPAIR PLAN
S.N. 074-0055

SCALE: SHEET NO. 4 OF 14 SHEETS STA. TO STA.

F.A.I. RTE.	SECTION	COUNTY	TOTAL SHEETS	SHEET NO.
72	(58,74-66)&(74-67&68)RS-1	PIATT	251	142
CONTRACT NO. 70022			ILLINOIS FED. AID PROJECT	