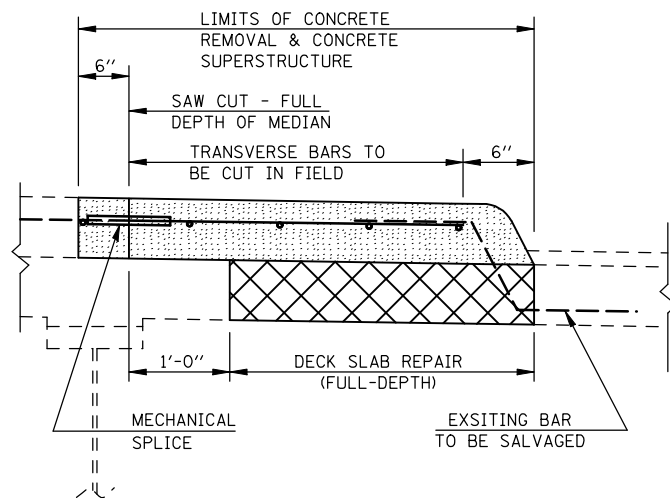
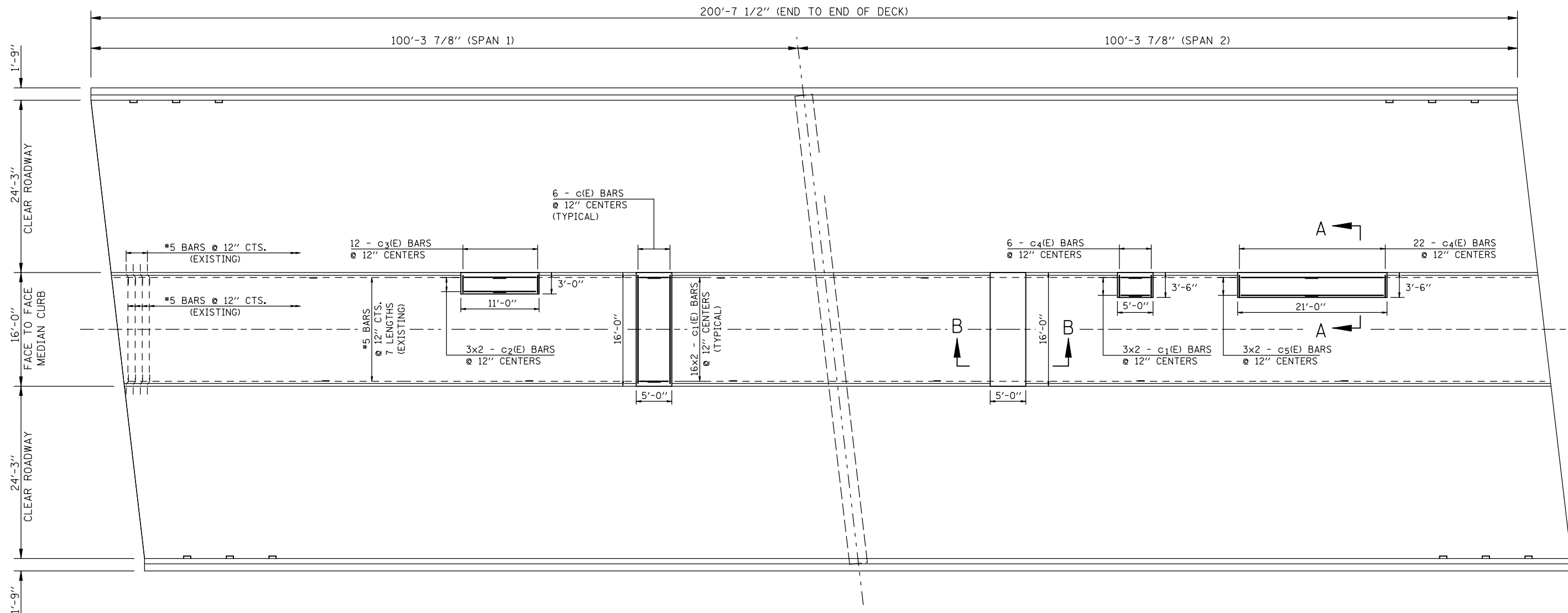
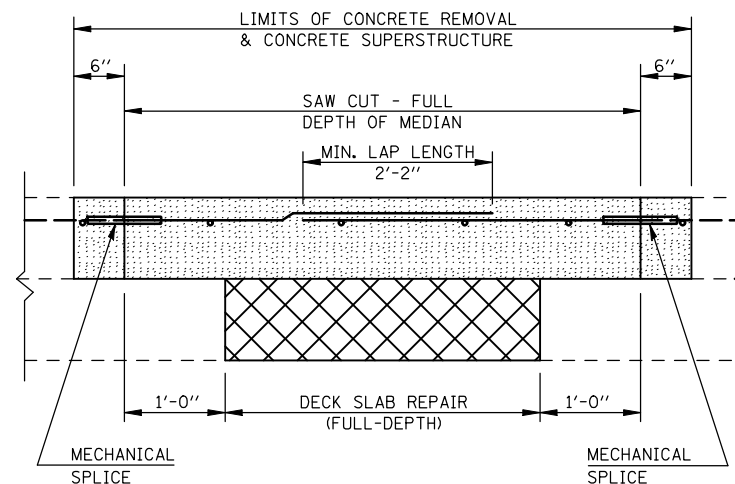


# SUPERSTRUCTURE REPAIR PLAN S.N. 074-0055



**SECTION A-A**  
(TYPICAL REPAIR DETAIL)



**SECTION B-B**  
(TYPICAL REPAIR DETAIL)

**NOTES:**

EXISTING BARS TO BE REUSED SHALL BE CLEANED, STRAIGHTENED AND INCORPORATED INTO THE NEW CONSTRUCTION.

PATCH SIZES SHOWN REPRESENT CONDITIONS AT THE TIME THE PLANS WERE COMPLETED. THE ACTUAL SIZES AND LOCATIONS OF PATCHING SHALL BE DETERMINED BY THE ENGINEER.

EXTRA LENGTH HAS BEEN PROVIDED IN TRANSVERSE REINFORCEMENT TO ACCOMMODATE THE POTENTIAL FOR LARGER PATCH SIZES. THE CONTRACTOR SHALL CUT TRANSVERSE REINFORCEMENT TO LENGTH IN THE FIELD. THIS POTENTIAL FOR LARGER PATCH SIZES IS PROVIDED FOR IN LONGITUDINAL REINFORCEMENT WITH EXCESS LAP LENGTH. HOWEVER, THE MINIMUM LAP LENGTH OF 2'-2" MUST BE MAINTAINED.

BARS DESIGNATED THUS 3x2 - ETC. INDICATES 3 LINES OF BARS WITH 2 LENGTHS PERLINE.

ALL PROPOSED REINFORCEMENT BARS AND MECHANICAL SPLICES SHALL BE EPOXY COATED.

FOR ADDITIONAL INFORMATION ON AS-BUILT REINFORCEMENT, SEE SHEETS 12 & 13 OF 14.

**BILL OF MATERIALS**

BAR NO.	SIZE	LENGTH	SHAPE
c(E)	12 #5	15'-0"	---
c <sub>1</sub> (E)	70 #5	3'-6"	---
c <sub>2</sub> (E)	6 #5	8'-6"	---
c <sub>3</sub> (E)	12 #5	4'-0"	---
c <sub>4</sub> (E)	28 #5	4'-6"	---
c <sub>5</sub> (E)	6 #5	13'-0"	---
REINFORCEMENT BARS, EPOXY COATED			POUND 770.0
CONCRETE REMOVAL			CU. YD. 6.6
CONCRETE SUPERSTRUCTURE			CU. YD. 6.6
MECHANICAL SPLICE			EACH 122.0

FILE NAME =	USER NAME = p1ersonbr	DESIGNED - GMS	REVISED -
ct:\pw\work\p1dot\p1ersonbr\d0109687\70022-Bridge Repair Plan.dgn		DRAWN - GMS	REVISED -
PLOT SCALE = 40.0000' / IN.		CHECKED -	REVISED -
PLOT DATE = 2/8/2010		DATE -	REVISED -

**STATE OF ILLINOIS  
DEPARTMENT OF TRANSPORTATION**

**SUPERSTRUCTURE REPAIR PLAN  
S.N. 074-0055**

SCALE: SHEET NO. 5 OF 14 SHEETS STA. TO STA.

F.A.I. RTE.	SECTION	COUNTY	TOTAL SHEETS	SHEET NO.
72	(58,74-66)&(74-67&68)RS-1	PIATT	251	143
CONTRACT NO. 70022				
ILLINOIS FED. AID PROJECT				