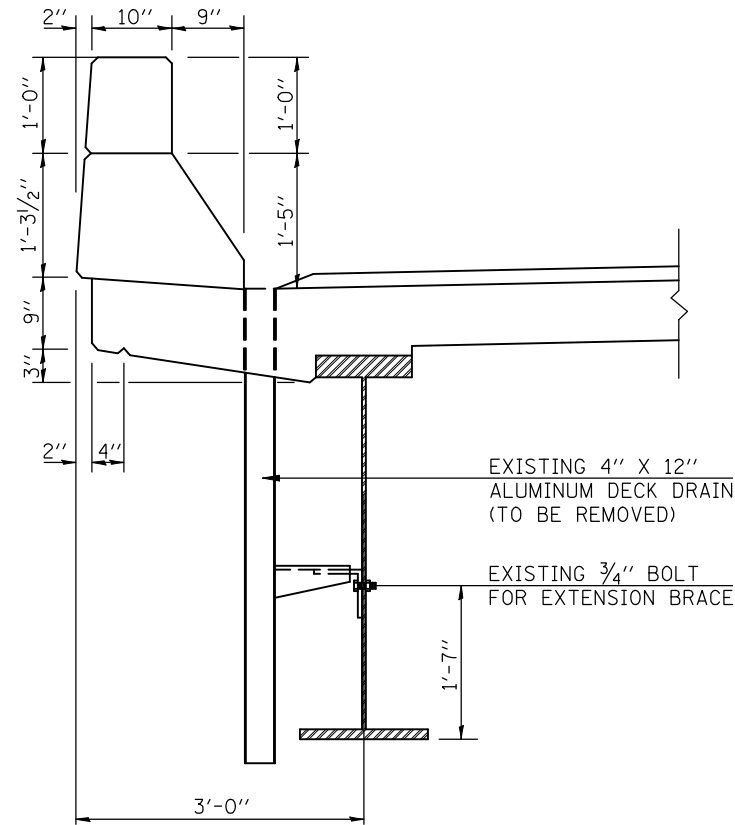
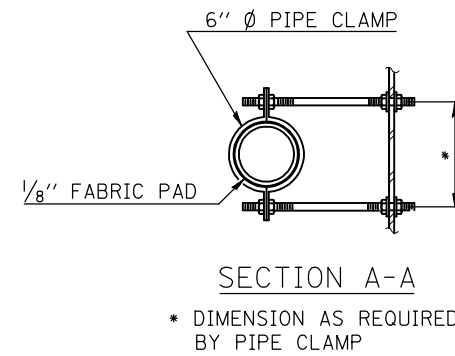


# FLOOR DRAIN DETAILS

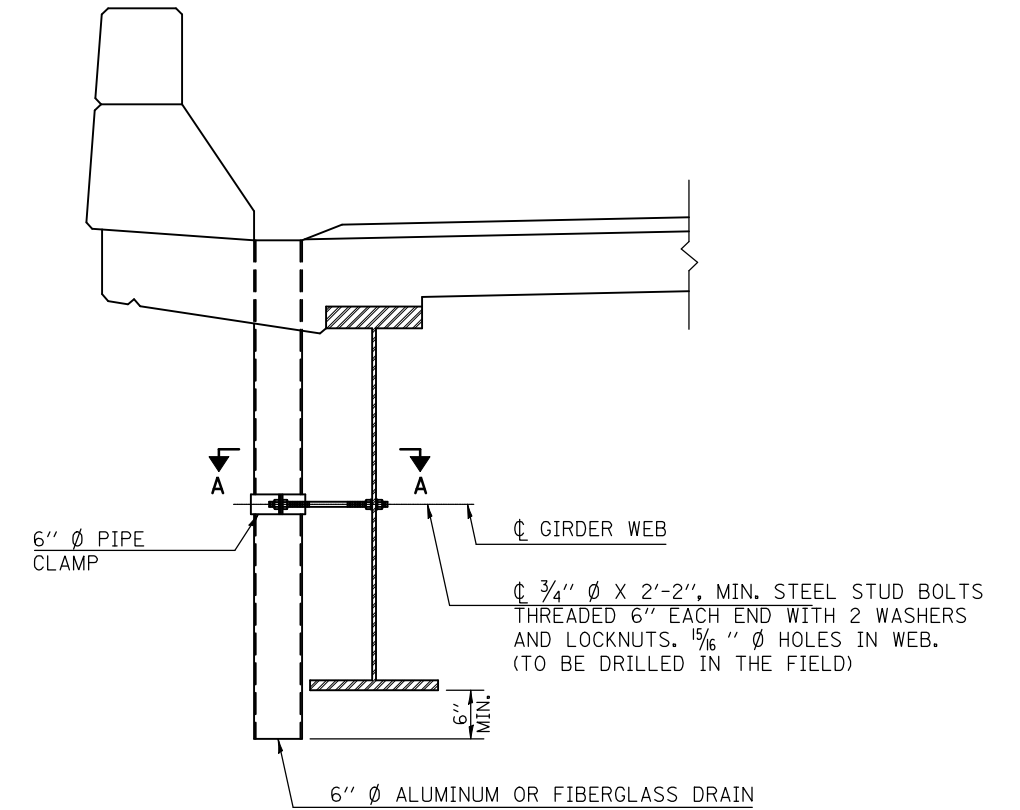
## S.N. 074-0055



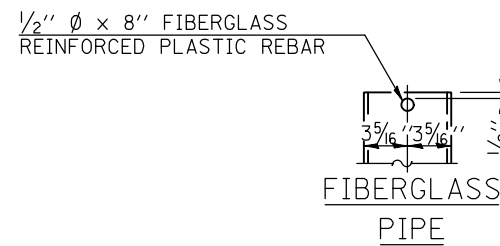
SECTION AT  
EXISTING DRAIN



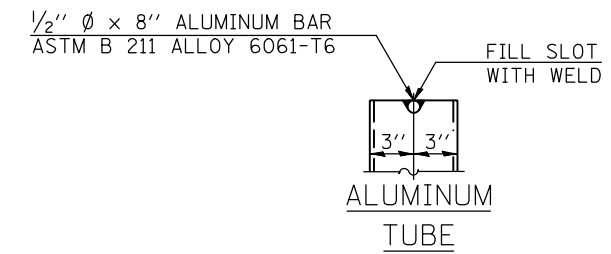
SECTION A-A  
\* DIMENSION AS REQUIRED  
BY PIPE CLAMP



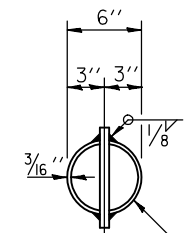
SECTION AT  
PROPOSED DRAIN



FIBERGLASS  
PIPE

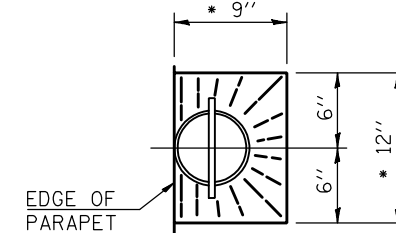


ALUMINUM  
TUBE



6" O.D. ALUMINUM TUBE ALLOY  
6061-T6 OR 6" Ø FIBERGLASS PIPE

TOP PLAN  
(ALUMINUM TUBE SHOWN)



EDGE OF  
PARAPET

TOP PLAN

\* SLOPE TO DRAIN

### NOTES:

FLOOR DRAINS NEED NOT BE PAINTED.

FIBERGLASS PIPE SHALL CONFORM TO ASTM D 2996, WITH SHORT-TIME RUPTURE STRENGTH HOOP TENSILE STRESS OF 30,000 P.S.I. MINIMUM.

GALVANIZE CLAMPING DEVICE AND ALL STUD BOLTS, WASHERS AND NUTS ACCORDING TO AASHTO M232.

FILE NAME =	USER NAME = ppersonbr	DESIGNED - GMS	REVISED -
ct:\pw\work\p\dot\personbr\d0109687\70022-Bridge Repair Plan.dgn		DRAWN - GMS	REVISED -
	PLOT SCALE = 40.0000 ' / IN.	CHECKED -	REVISED -
	PLOT DATE = 2/8/2010	DATE -	REVISED -

STATE OF ILLINOIS  
DEPARTMENT OF TRANSPORTATION

FLOOR DRAIN DETAILS  
S.N. 074-0055

SCALE: SHEET NO. 9 OF 14 SHEETS STA. TO STA.

F.A.I. RTE.:	SECTION	COUNTY	TOTAL SHEETS	SHEET NO.
72	(58,74-66)&(74-67&68)RS-1	PIATT	251	147
			CONTRACT NO. 70022	
ILLINOIS FED. AID PROJECT				