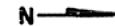


AS-BUILT PLANS - S.N. 074-0055 FOR INFORMATION ONLY

STATE OF ILLINOIS

ROUTE NO.	SECTION	COUNTY	TOTAL SHEETS	SHEET NO.
80-66	HB-2	MACON & PIATT	77	24
F.A. 932+59.22		ILLINOIS	FED. AID PROJECT	

SHEET NO. 9
SHEETS 15



ELEVATIONS TOP OF WEB *

GIRDER	€ Brg. N. S. Abut.	€ Pier	€ SPLICE
1-10	711.97	712.12	712.16
2-9	712.12	712.26	712.30
3-8	712.24	712.37	712.41
4-7	712.35	712.48	712.52
5-6	712.46	712.59	712.63

*For Fabrication Only

MOMENT TABLE

	INTERIOR GIRDER	
	0.4 Span 1	Pier
I_x (IN ⁴)	17060	42083
I_c (IN ⁴)	46289	
S_x (IN ³)	931	1735
S_c (IN ³)	1287	
D (IN)	0.86	1.33
M_R (IK)	492	1906
$F_s D$ (KSI)	6.34	13.18
S_R (K)	0.47	
$M_s E$ (IK)	319	
$M_s B$ (IK)	762	662
$M_s W$ (IK)	174	147
Total (IK)	1275	809
$F_s I$ (KSI)	12.18	5.60
$F_s I$ (KSI)	18.52	18.78
VR (K)	602	

REACTION TABLE

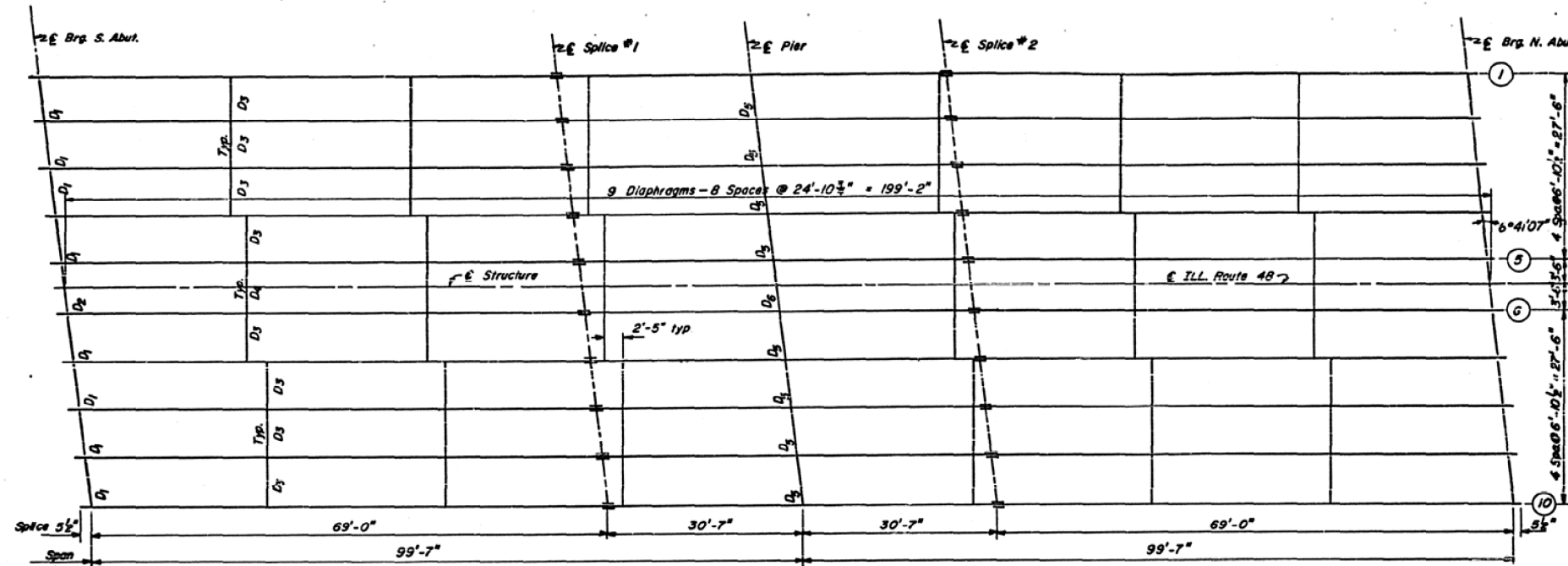
	INTERIOR GIRDER REACTION TABLE	
	Abutment	Pier
R_2 (K)	46.5	173.5
R_L (K)	45.4	65.5
Imp. (K)	10.1	14.5
R Total (K)	102.0	253.5

I_x and S_x are the moment of inertia and section modulus of the steel section.

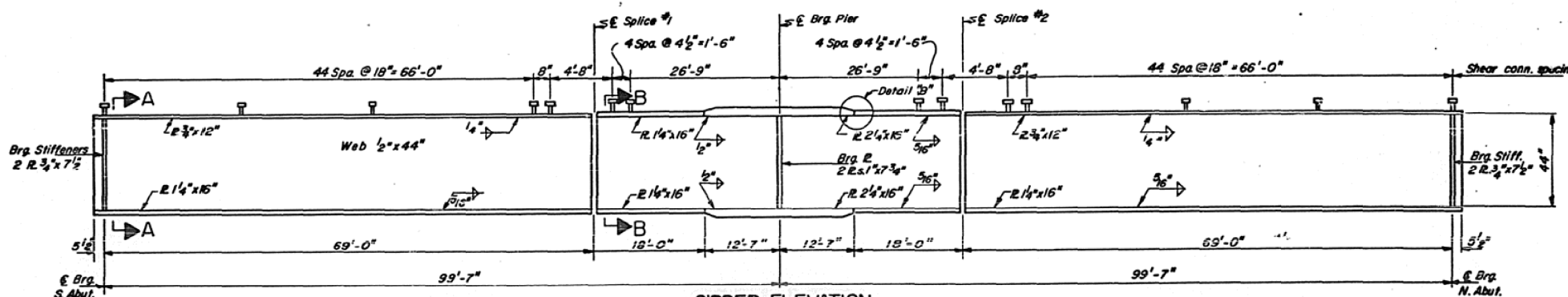
I_c and S_c are the moment of inertia and section modulus of the composite section used in computing F_s .

VR is the maximum \pm I shear range in span used to determine shear stud spacing.

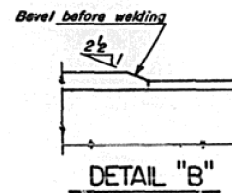
F_s is for LL + Imp. @ Pier
 F_s is for LL + Imp. (n=10) + Comp. D.L. (n=30) 0.4 @ Span 1.



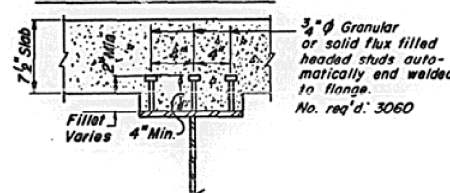
PLAN



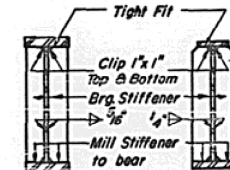
GIRDER ELEVATION



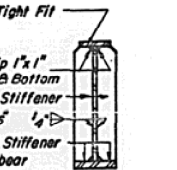
DETAIL "B"



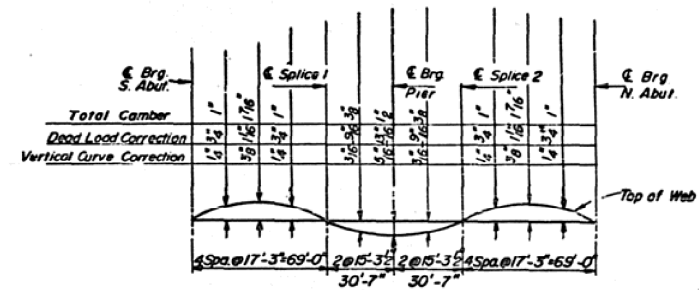
TYPICAL SHEAR CONNECTORS



SECTION AT PIER



SECTION AT ABUTMENT



CAMBER DIAGRAM

* For Top of Web Elevations at Splices and Bearings. See Table on this sheet.

FRAMING DETAILS
F.A.I.-72 SECTION 58-66 HB-2
MACON & PIATT COUNTIES
STA. 932+59.22 (F.A.I.-72)

DESIGNED	KSY, ST, MSS
CHECKED	KSY
DRAWN	MMP
CHECKED	KSY

FILE NAME =	USER NAME = ppersonbr	DESIGNED -	GMS	REVISED -	
ct:\pw\work\pwork\personbr\d0109687\70022-Bridge Repair Plan.dgn		DRAWN -	GMS	REVISED -	
		CHECKED -		REVISED -	
		DATE -		REVISED -	

STATE OF ILLINOIS
DEPARTMENT OF TRANSPORTATION

AS-BUILT PLANS - S.N. 074-0055
FOR INFORMATION ONLY

SCALE: SHEET NO. 14 OF 14 SHEETS STA. TO STA.

F.A.I. RTE.	SECTION	COUNTY	TOTAL SHEETS	SHEET NO.
72	(58,74-66)&(74-67&68)RS-1	PIATT	251	152
CONTRACT NO. 70022			ILLINOIS FED. AID PROJECT	