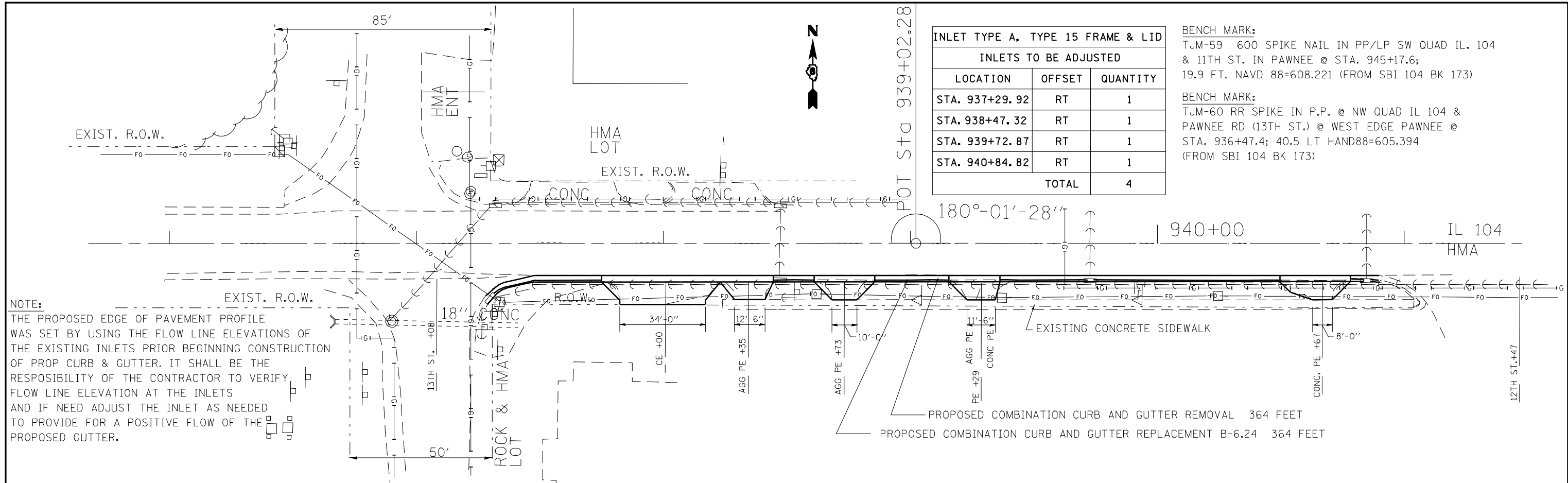
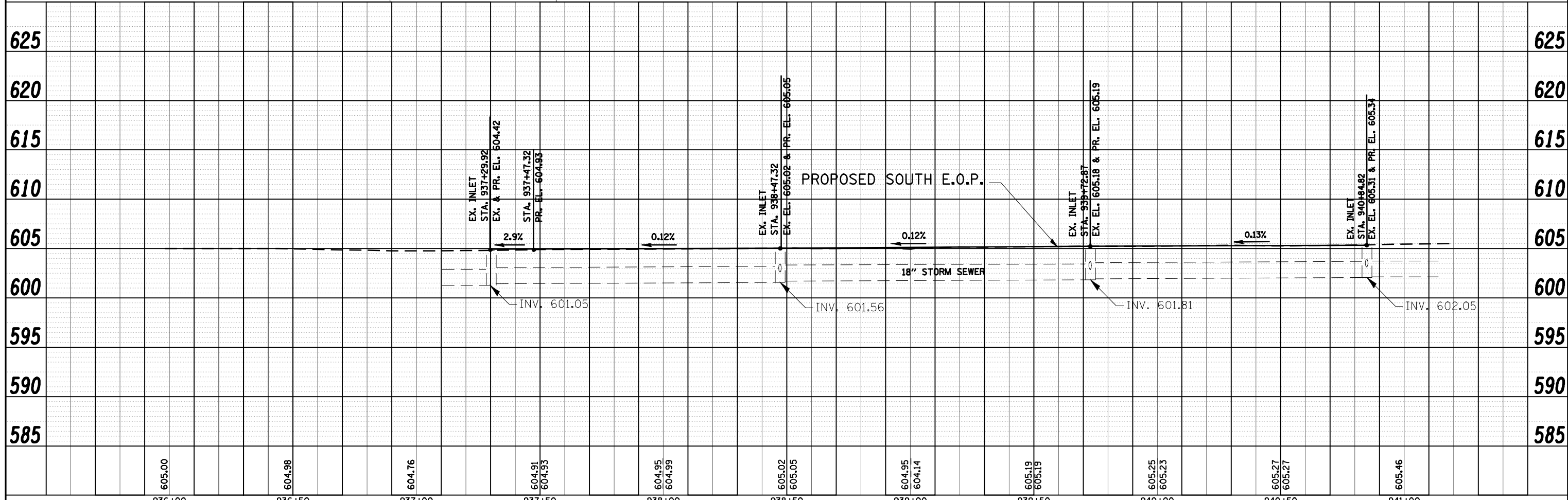


DATE	
BY	
REVIEWED	
PLANNED	
NOTED	
CHECKED	
NO.	

DATE	
BY	
REVIEWED	
PLANNED	
NOTED	
CHECKED	
NO.	



NOTE:
 THE PROPOSED EDGE OF PAVEMENT PROFILE WAS SET BY USING THE FLOW LINE ELEVATIONS OF THE EXISTING INLETS PRIOR BEGINNING CONSTRUCTION OF PROP CURB & GUTTER. IT SHALL BE THE RESPONSIBILITY OF THE CONTRACTOR TO VERIFY FLOW LINE ELEVATION AT THE INLETS AND IF NEED ADJUST THE INLET AS NEEDED TO PROVIDE FOR A POSITIVE FLOW OF THE PROPOSED GUTTER.



FILE NAME =	USER NAME = laughtlrr1	DESIGNED -	REVISED -	STATE OF ILLINOIS DEPARTMENT OF TRANSPORTATION	PLAN AND PROFILE SHEET				F.A.P. RTE.	SECTION	COUNTY	TOTAL SHEETS	SHEET NO.
ct:\pwork\PWIDOT\LAUGHLIN\ld0122712\0672062-ahp-pln14.dgn		DRAWN -	REVISED -		753	141RS-6&142RS-6		62	37				
PLOT SCALE = 40.0000' / IN.		CHECKED -	REVISED -		SCALE: SHEET NO. OF SHEETS STA. TO STA.				CONTRACT NO. 72B13				
PLOT DATE = Feb-05-2010 11:46:42AM		DATE -	REVISED -		ILLINOIS FED. AID PROJECT								