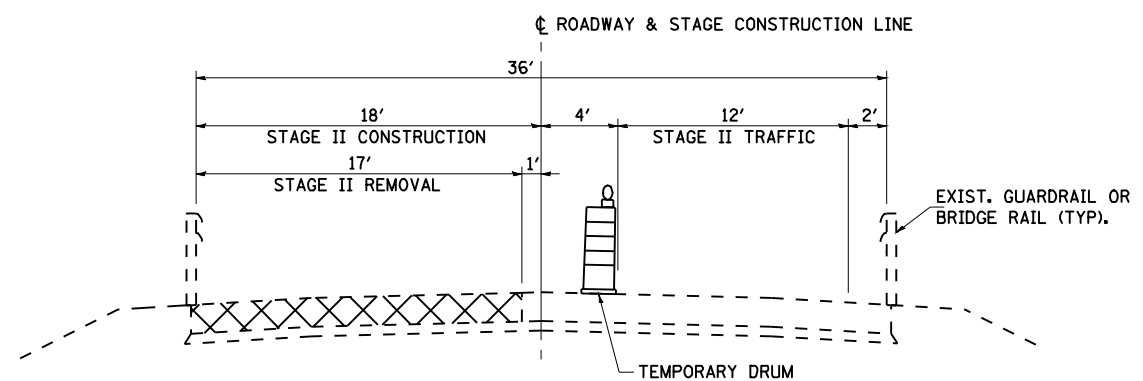
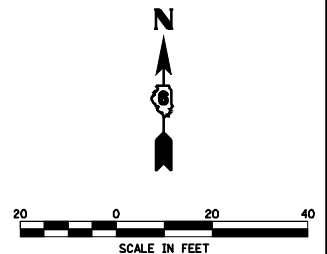


STAGE II CONSTRUCTION PLAN



TYPICAL SECTION - STAGE II CONSTRUCTION

SN 011-0019 - LOOKING EAST

STAGE II - SUGGESTED CONSTRUCTION SEQUENCE

- FOLLOWING COMPLETION OF STAGE I CONSTRUCTION:
1. RELOCATE THE TEMPORARY BARRICADES OR DRUMS AND PLACE TEMPORARY PAVEMENT MARKINGS IN ACCORDANCE WITH THESE PLANS.
 2. PERFORM STAGE II BRIDGE APPROACH PAVEMENT AND ABUTMENT REPAIRS TO SN 011-0019
 3. INSTALL PERMANENT GUARDRAIL AS DETAILED IN THESE PLANS.
 4. REMOVE TEMPORARY PAVEMENT MARKINGS FOR STAGE CONSTRUCTION AND PLACE TEMPORARY PAVEMENT MARKINGS FOR TWO-WAY TRAFFIC.

LEGEND

	SIGN
	TYPE III BARRICADE WITH FLASHING LIGHTS
	DRUM WITH STEADY BURNING LIGHT
	TYPE C BIDIRECTIONAL REFLECTOR
	TEMPORARY TRAFFIC SIGNAL
	DOUBLE VERTICAL PANEL
	DETECTOR LOOPS
	TEMPORARY PAVEMENT MARKING, LINE 5" WHITE
	TEMPORARY PAVEMENT MARKING, LINE 24" WHITE
	WORK AREA

FILE NAME =	USER NAME = laughlinr1	DESIGNED -	REVISED -	STATE OF ILLINOIS DEPARTMENT OF TRANSPORTATION	MAINTENANCE OF TRAFFIC & STAGING PLANS - SN 011-0019			F.A.P. RTE.	SECTION	COUNTY	TOTAL SHEETS	SHEET NO.
er:\pwork\PWIDOT\LAUGHLINRL\dms25619\0672813-ah-t-staging-an019.dgn		DRAWN -	REVISED -		753	141RS-6&142RS-6		62	42			
PLOT SCALE = 48.0000' / IN.		CHECKED -	REVISED -		CONTRACT NO. 72B13							
PLOT DATE = Feb-05-2010 11:46:54AM		DATE -	REVISED -		ILLINOIS FED. AID PROJECT							
					SCALE:	SHEET NO.	OF SHEETS	STA.	TO STA.	SANGAMON, CHRISTIAN		