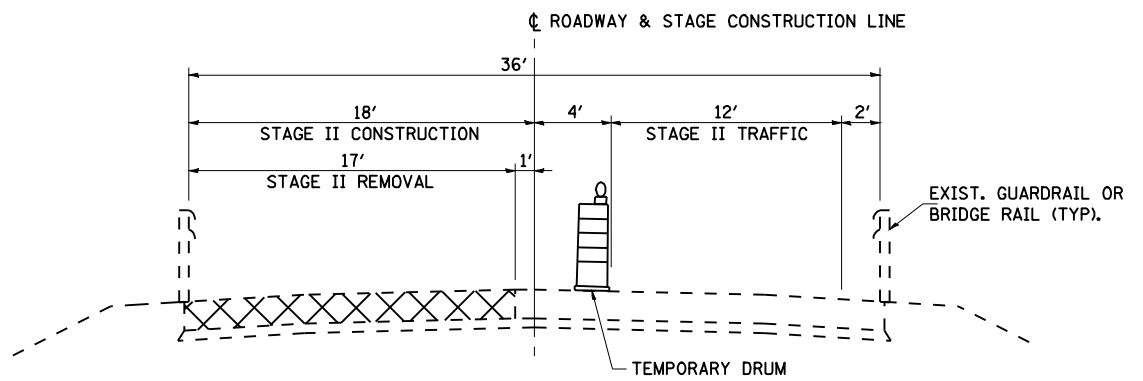
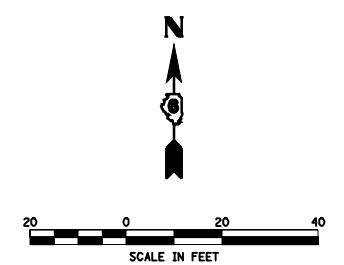


STAGE II CONSTRUCTION PLAN



TYPICAL SECTION - STAGE II CONSTRUCTION

SN 011-0021 - LOOKING EAST

STAGE II - SUGGESTED CONSTRUCTION SEQUENCE

- FOLLOWING COMPLETION OF STAGE I CONSTRUCTION:
1. RELOCATE THE TEMPORARY BARRICADES OR DRUMS AND PLACE TEMPORARY PAVEMENT MARKINGS IN ACCORDANCE WITH THESE PLANS.
 2. PERFORM STAGE II BRIDGE APPROACH PAVEMENT AND ABUTMENT REPAIRS TO SN 011-0021
 3. INSTALL PERMANENT GUARDRAIL AS DETAILED IN THESE PLANS.
 4. REMOVE TEMPORARY PAVEMENT MARKINGS FOR STAGE CONSTRUCTION AND PLACE TEMPORARY PAVEMENT MARKINGS FOR TWO-WAY TRAFFIC.

LEGEND

- ↑ SIGN
- ⊥ TYPE III BARRICADE WITH FLASHING LIGHTS
- DRUM WITH STEADY BURNING LIGHT
- ◇ TYPE C BIDIRECTIONAL REFLECTOR
- TEMPORARY TRAFFIC SIGNAL
- ▬ DOUBLE VERTICAL PANEL
- ◻◻ DETECTOR LOOPS
- ① TEMPORARY PAVEMENT MARKING, LINE 5" WHITE
- ② TEMPORARY PAVEMENT MARKING, LINE 24" WHITE
- ▨ WORK AREA

FILE NAME =	USER NAME = laughlinr1	DESIGNED -	REVISED -
e:\pwork\pwork\LAUGHLINRL\dms25619\0672813-ah-t-staging-an0021.dgn		DRAWN -	REVISED -
PLOT SCALE = 40.0000' / IN.		CHECKED -	REVISED -
PLOT DATE = Feb-05-2010 11:47:05AM		DATE -	REVISED -

**STATE OF ILLINOIS
DEPARTMENT OF TRANSPORTATION**

MAINTENANCE OF TRAFFIC & STAGING PLANS - SN 011-0021			
SCALE:	SHEET NO.	OF SHEETS	STA. TO STA.

F.A.P. RTE.	SECTION	COUNTY	TOTAL SHEETS	SHEET NO.
753	141RS-6&142RS-6		62	46
CONTRACT NO. 72B13			ILLINOIS FED. AID PROJECT	