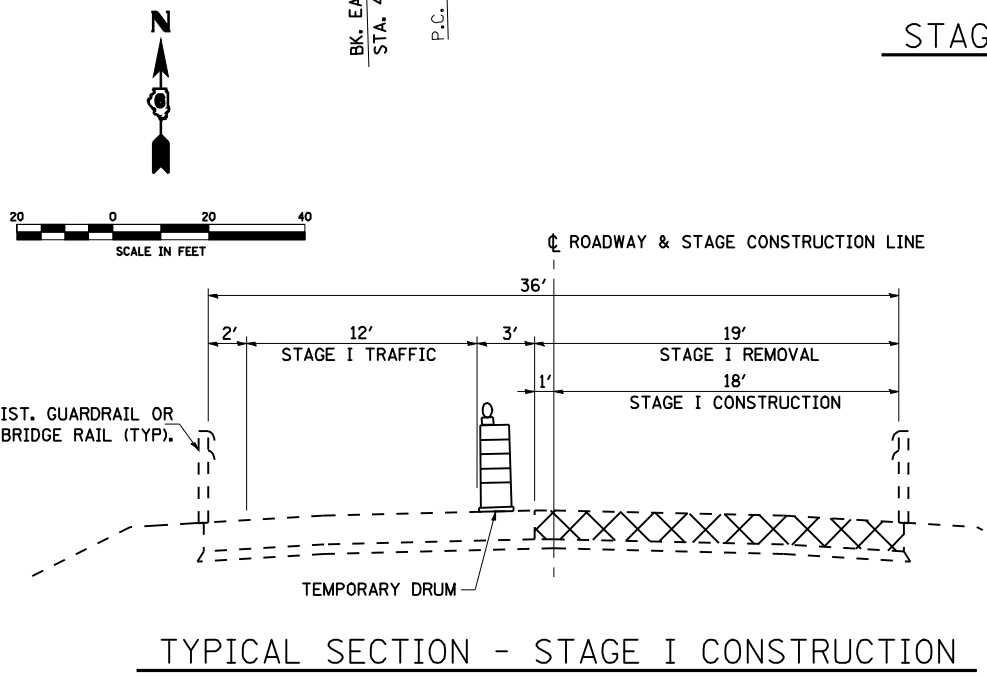
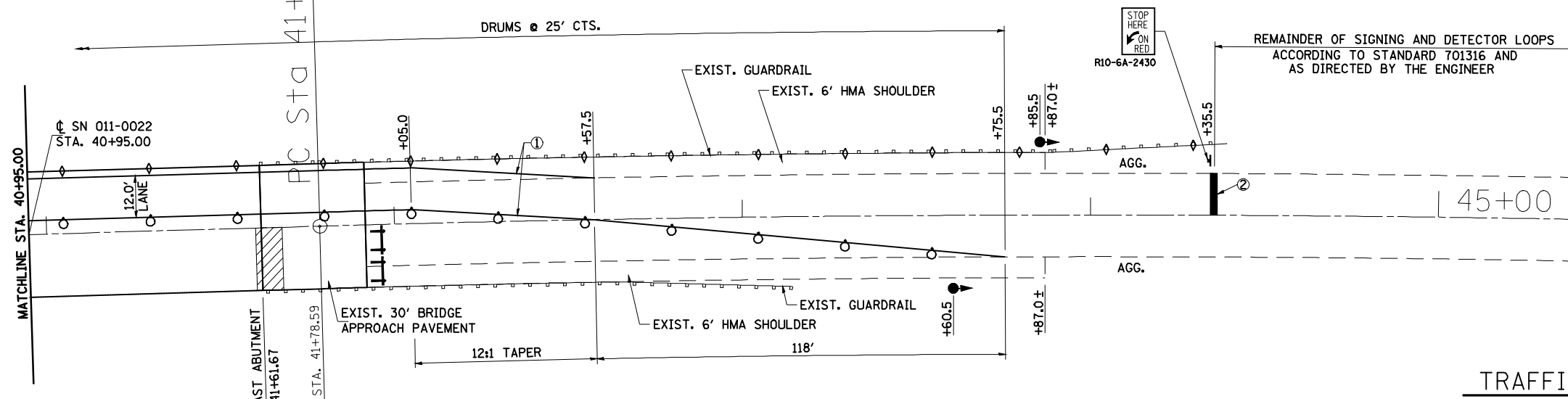
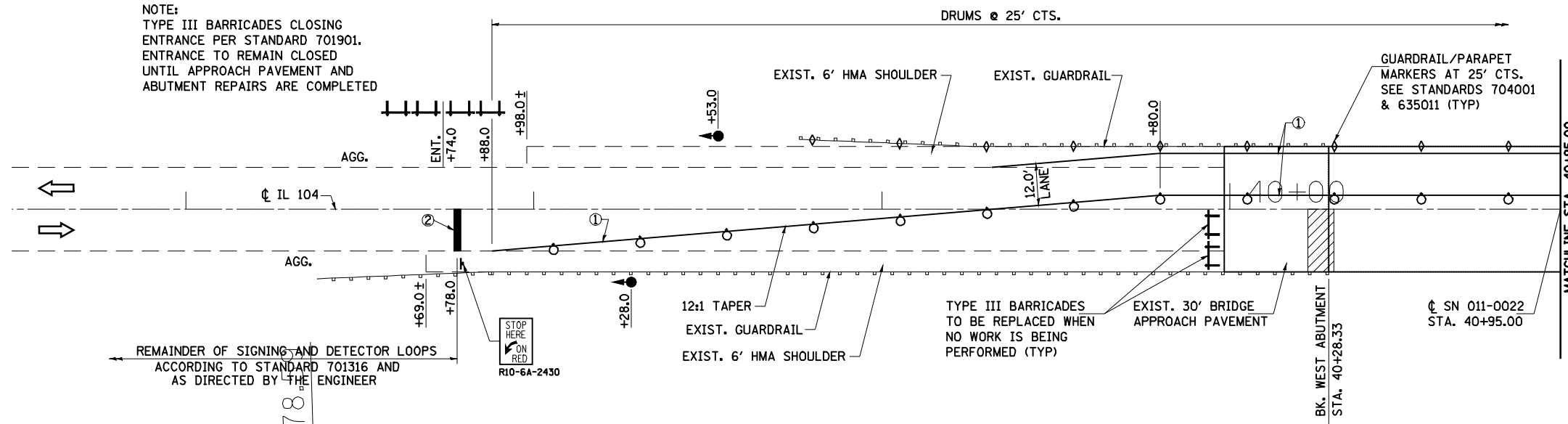


NOTE:
 TYPE III BARRICADES CLOSING
 ENTRANCE PER STANDARD 701901.
 ENTRANCE TO REMAIN CLOSED
 UNTIL APPROACH PAVEMENT AND
 ABUTMENT REPAIRS ARE COMPLETED



STAGE I CONSTRUCTION PLAN

PRELIMINARY STAGE - SUGGESTED CONSTRUCTION SEQUENCE

1. SET UP STAGE I TRAFFIC CONTROL UTILIZING THESE PLANS IN CONJUNCTION WITH HIGHWAY STANDARD 701316. BE SURE TO USE THE LATEST REVISION AS INCLUDED WITH THESE PLANS.
2. PLACE MAXIMUM WIDTH SIGNING AT THE LOCATIONS AS SHOWN ON STANDARD 701316.
3. PLACE TEMPORARY BARRICADES OR DRUMS AND PAVEMENT MARKINGS IN ACCORDANCE WITH THESE PLANS.
4. INSTALL TEMPORARY SIGNALIZATIONS AND DETECTION SYSTEMS AT LOCATIONS CALLED OUT IN THESE PLANS FOR SN 011-0022.
5. ALL SIGNALS ARE TO BE ACTUATED.
6. PROVIDE TWO MESSAGE SIGNS FOR DURATION OF CONTRACT AND ADJUST AS DIRECTED BY THE ENGINEER.

STAGE I - SUGGESTED CONSTRUCTION SEQUENCE

1. PERFORM STAGE I BRIDGE APPROACH PAVEMENT AND ABUTMENT REPAIRS TO SN 011-0022.
2. INSTALL PERMANENT GUARDRAIL AS SHOWN IN THESE PLAN FOR STAGE II TRAFFIC.

LEGEND

- ↑ SIGN
- ⊥ TYPE III BARRICADE WITH FLASHING LIGHTS
- DRUM WITH STEADY BURNING LIGHT
- ◇ TYPE C BIDIRECTIONAL REFLECTOR
- TEMPORARY TRAFFIC SIGNAL
- ▬ DOUBLE VERTICAL PANEL
- DETECTOR LOOPS
- ① TEMPORARY PAVEMENT MARKING, LINE 5" WHITE
- ② TEMPORARY PAVEMENT MARKING, LINE 24" WHITE
- ▨ WORK AREA

EXIST. CURVE
 P.I. STA = 47+00.49
 $\Delta = 7^{\circ}47'01''$ (RT)
 $D = 0^{\circ}44'49''$
 $R = 7,671.75'$
 $T = 521.90'$
 $L = 1,042.19'$
 $E = 17.73'$
 P.C. STA = 41+78.59
 P.T. STA = 52+20.78

TRAFFIC STAGING NOTES

1. THIS TRAFFIC CONTROL PLAN SHALL BE USED IN CONJUNCTION WITH STANDARD 701316 AND AS DIRECTED BY THE ENGINEER.
2. SIGNAL AHEAD SIGNS SHALL BE ERECTED DURING STAGE CONSTRUCTION BY THE CONTRACTOR AS DIRECTED BY THE ENGINEER. COST OF SIGNS SHALL BE INCLUDED IN THE COST FOR "TRAFFIC CONTROL AND PROTECTION, STANDARD 701316 (SPECIAL)."
3. DURING STAGE CONSTRUCTION ADDITIONAL FLAGGERS ARE NECESSARY FOR REPAIRS TO BRIDGE APPROACH PAVEMENT AND BRIDGE ABUTMENT OPERATIONS.
4. ALL WORK REQUIRED TO SET UP, MAINTAIN, AND REMOVE TRAFFIC CONTROL AS DETAILED IN THESE PLANS SHALL BE INCLUDED IN THE COST FOR "TRAFFIC CONTROL AND PROTECTION, STANDARD 701316 (SPECIAL)."
5. THE CONTRACTOR MUST PLACE MAXIMUM WIDTH SIGNS PRIOR TO IMPLEMENTING ANY STAGE'S TRAFFIC CONTROL. THESE SIGNS SHALL BE PLACED AS SHOWN ON STANDARD 701316 AND INCLUDED IN THE COST OF "TRAFFIC CONTROL AND PROTECTION, STANDARD 701316 (SPECIAL)."
6. TEMPORARY SIGNING, BARRICADES OR DRUMS, AND TEMPORARY WALL BARRIER REFLECTORS SHALL BE PLACED IN ACCORDANCE WITH STANDARD 701316, OR AS DIRECTED BY THE ENGINEER.
7. THE CONTRACTOR SHALL NOTIFY THE DISTRICT 6 TRAFFIC SECTION OF THE BUREAU OF OPERATIONS (PH: 217-785-5312) AT LEAST THREE WEEKS PRIOR TO IMPLEMENTING STAGE TRAFFIC
8. CONTROL AND WHEN EVER A SWITCH IN STAGING IS MADE. THE CONTRACTOR MUST NOTIFY THE DISTRICT 6 TRAFFIC SECTION OF THE BUREAU OF OPERATIONS AT LEAST THREE (3) DAYS PRIOR TO ACTIVATING THE TEMPORARY TRAFFIC SIGNALS. PLEASE REFER TO THE DISTRICT 6 SPECIAL PROVISION FOR TEMPORARY BRIDGE TRAFFIC INFORMATION.
9. ACCESS MUST BE PROVIDED TO ALL F.E. AS REQUIRED BY THE PROPERTY OWNER. NO SIGNALS WILL BE REQUIRED FOR THEM.
10. EXISTING PAVEMENT MARKING THAT CONFLICTS WITH THE REVISED STAGE TRAFFIC PATTERNS DURING ALL PHASES OF STAGE CONSTRUCTION SHALL BE REMOVED AS SPECIFIED IN SECTION 783 OF THE STANDARD SPECIFICATIONS AND PAID FOR AS "PAVEMENT MARKING REMOVAL."
11. THE COST TO INSTALL AND REMOVE TEMPORARY PAVEMENT MARKINGS DETAILED ON THESE SHEETS SHALL BE INCLUDED IN THE COST OF "TRAFFIC CONTROL AND PROTECTION, STANDARD 701316 (SPECIAL)."

FILE NAME =	USER NAME = laughlinr1	DESIGNED -	REVISED -	STATE OF ILLINOIS DEPARTMENT OF TRANSPORTATION	MAINTENANCE OF TRAFFIC & STAGING PLANS - SN 011-0022			F.A.P. RTE.	SECTION	COUNTY	TOTAL SHEETS	SHEET NO.
es:\pwwork\PWIDOT\LAUGHLINRL\dms25619\0672813-ah-t-staging-an0022.dgn	PLOT SCALE = 48.0000' / IN.	DRAWN -	REVISED -					753	141RS-6&142RS-6	*	62	47
PLOT DATE = Feb-05-2010 11:47:08AM	DATE -	CHECKED -	REVISED -					CONTRACT NO. 72B13			ILLINOIS FED. AID PROJECT	
		REVISOR -	REVISED -					SCALE: SHEET NO. OF SHEETS STA. TO STA.			* SANGAMON, CHRISTIAN	