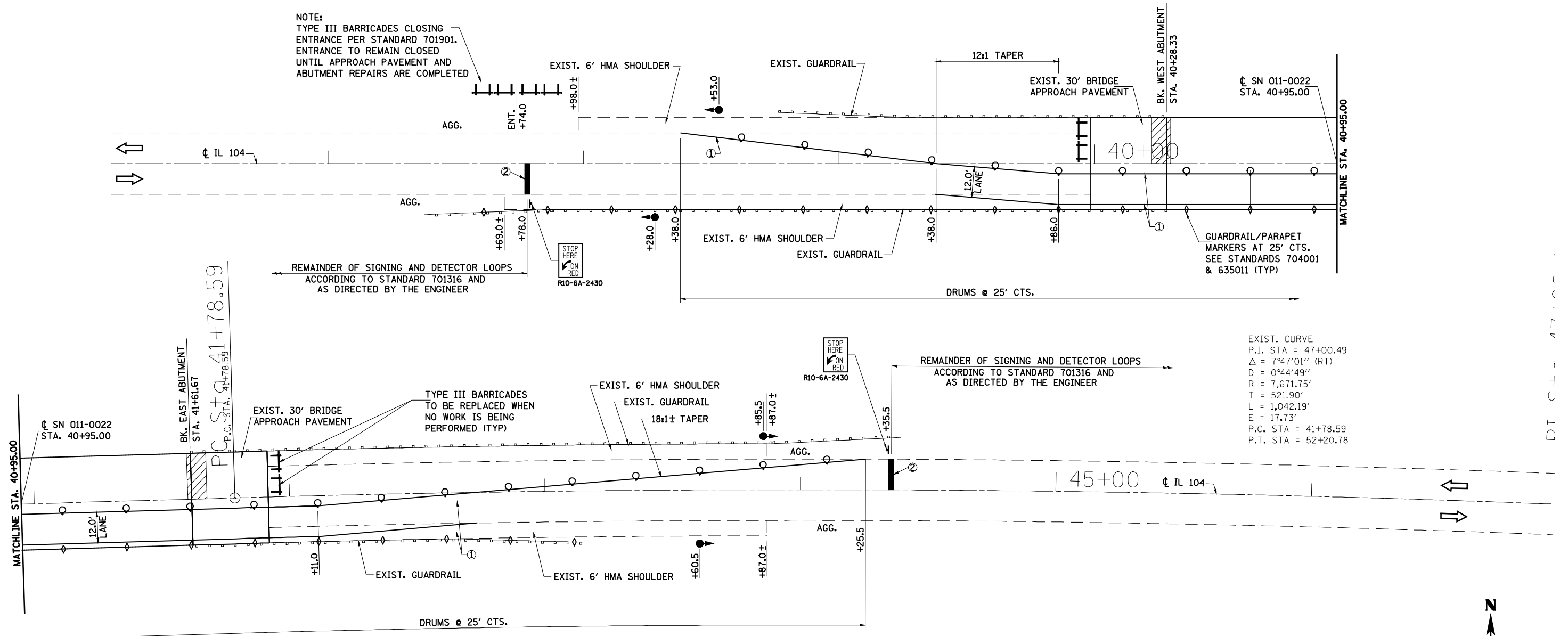
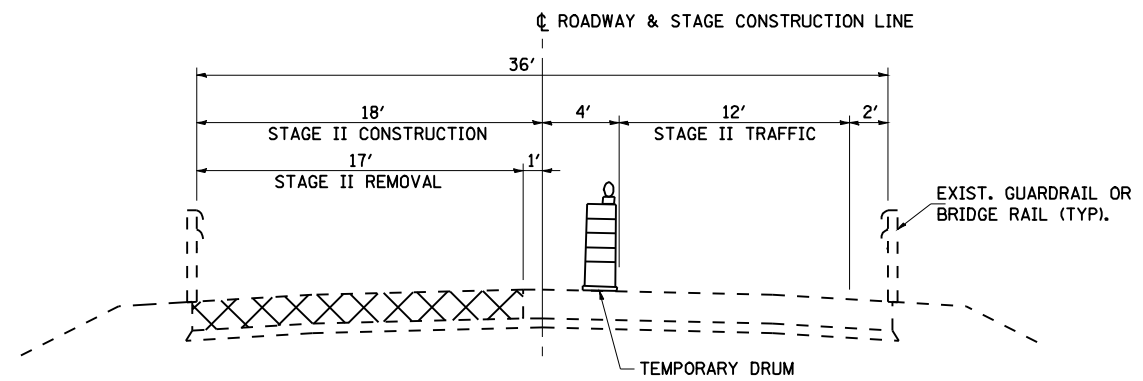
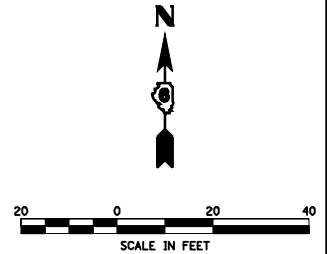


NOTE:
 TYPE III BARRICADES CLOSING
 ENTRANCE PER STANDARD 701901.
 ENTRANCE TO REMAIN CLOSED
 UNTIL APPROACH PAVEMENT AND
 ABUTMENT REPAIRS ARE COMPLETED



EXIST. CURVE
 P.I. STA = 47+00.49
 $\Delta = 7^{\circ}47'01''$ (RT)
 $D = 0^{\circ}44'49''$
 $R = 7,671.75'$
 $T = 521.90'$
 $L = 1,042.19'$
 $E = 17.73'$
 P.C. STA = 41+78.59
 P.T. STA = 52+20.78

STAGE II CONSTRUCTION PLAN



TYPICAL SECTION - STAGE II CONSTRUCTION

SN 011-0022 - LOOKING EAST

STAGE II - SUGGESTED CONSTRUCTION SEQUENCE

FOLLOWING COMPLETION OF STAGE I CONSTRUCTION:

1. RELOCATE THE TEMPORARY BARRICADES OR DRUMS AND PLACE TEMPORARY PAVEMENT MARKINGS IN ACCORDANCE WITH THESE PLANS.
2. PERFORM STAGE II BRIDGE APPROACH PAVEMENT AND ABUTMENT REPAIRS TO SN 011-0022
3. INSTALL PERMANENT GUARDRAIL AS DETAILED IN THESE PLANS.
4. REMOVE TEMPORARY PAVEMENT MARKINGS FOR STAGE CONSTRUCTION AND PLACE TEMPORARY PAVEMENT MARKINGS FOR TWO-WAY TRAFFIC.

LEGEND

- ⊥ SIGN
- ⊥ TYPE III BARRICADE WITH FLASHING LIGHTS
- DRUM WITH STEADY BURNING LIGHT
- ◇ TYPE C BIDIRECTIONAL REFLECTOR
- TEMPORARY TRAFFIC SIGNAL
- ▬ DOUBLE VERTICAL PANEL
- ◇ DETECTOR LOOPS
- ① TEMPORARY PAVEMENT MARKING, LINE 5" WHITE
- ② TEMPORARY PAVEMENT MARKING, LINE 24" WHITE
- ▨ WORK AREA

FILE NAME =	USER NAME = laughlinr1	DESIGNED -	REVISED -
er:\pwork\PWIDOT\LAUGHLINRL\dms25619\0672813-ah-t-staging-sn0022.dgn		DRAWN -	REVISED -
PLOT SCALE = 40.0000' / IN.		CHECKED -	REVISED -
PLOT DATE = Feb-05-2010 11:47:11AM		DATE -	REVISED -

**STATE OF ILLINOIS
 DEPARTMENT OF TRANSPORTATION**

**MAINTENANCE OF TRAFFIC &
 STAGING PLANS - SN 011-0022**

SCALE:	SHEET NO.	OF SHEETS	STA.	TO STA.
--------	-----------	-----------	------	---------

F.A.P. RTE.	SECTION	COUNTY	TOTAL SHEETS	SHEET NO.
753	141RS-6&142RS-6		62	48
CONTRACT NO. 72B13			ILLINOIS FED. AID PROJECT	