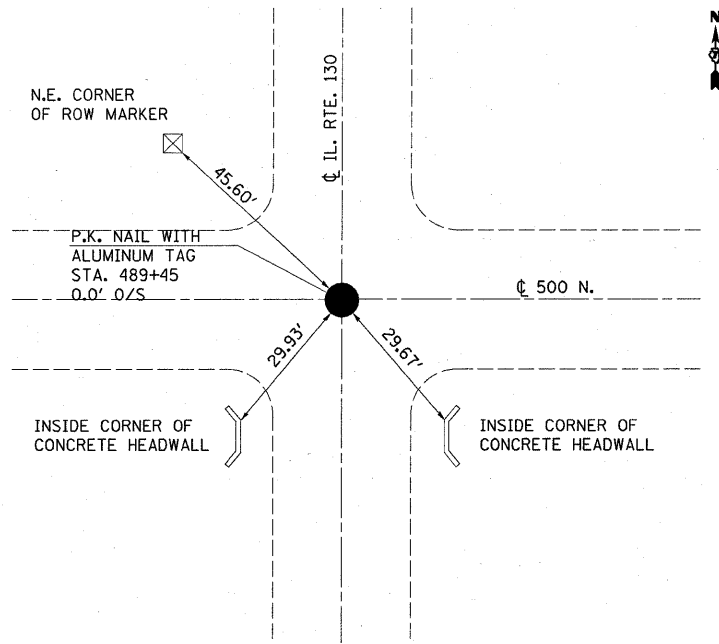
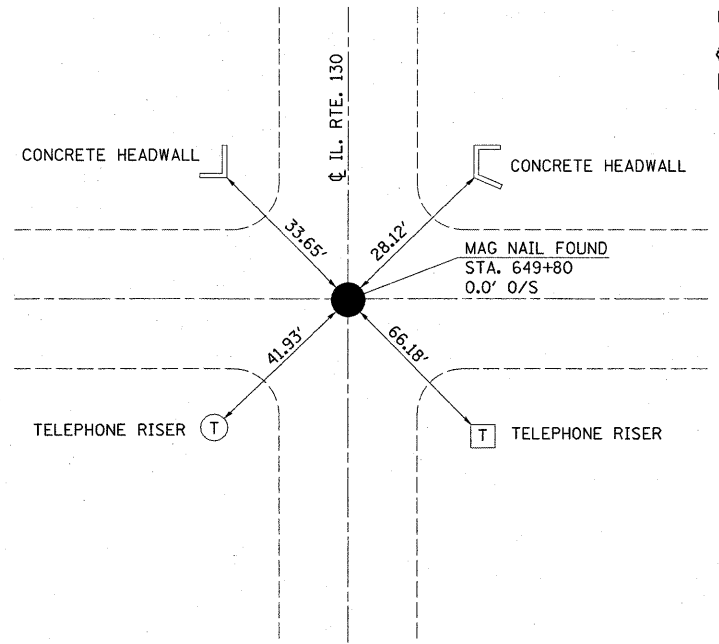


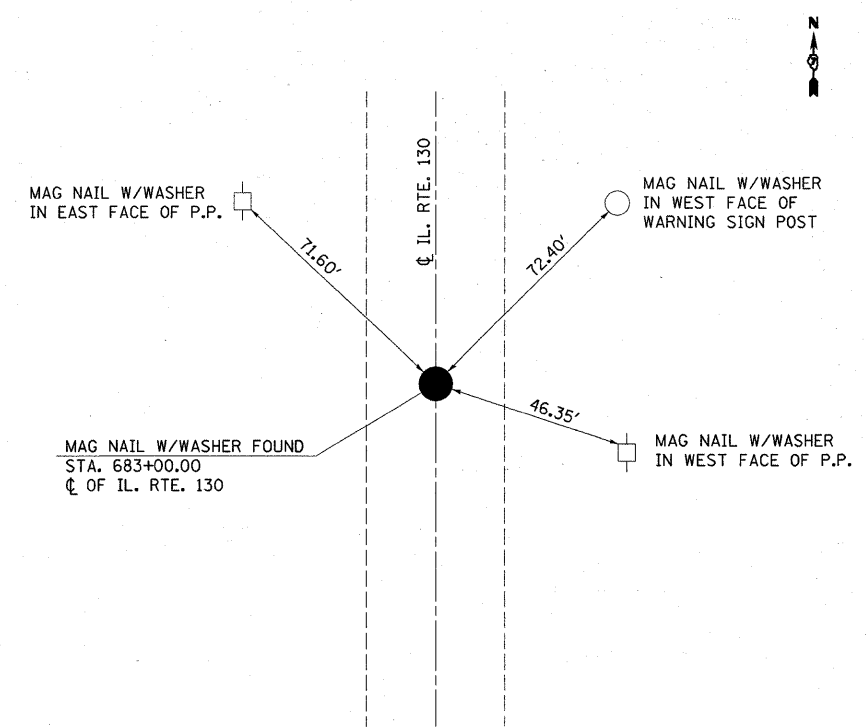
N.W. CORNER OF SECTION 12  
SET P.K. NAIL WITH  
ALUMINUM TAG  
STA. 489+45



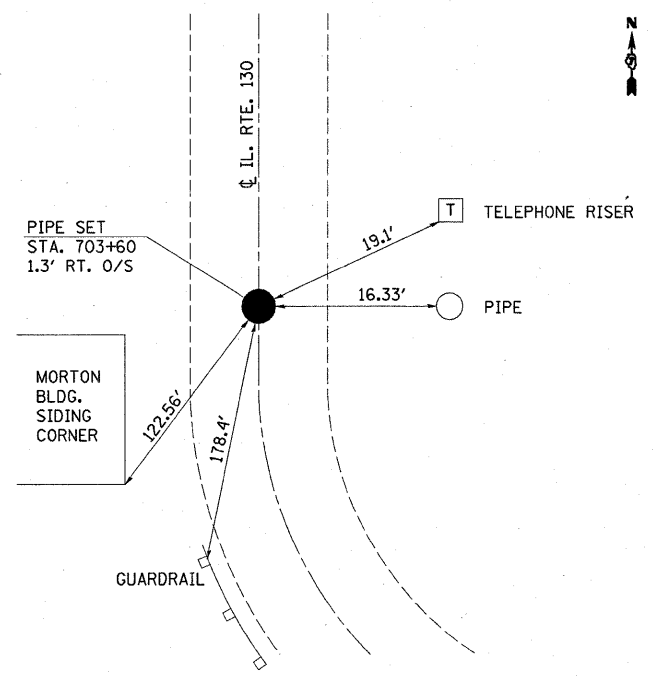
S.W. CORNER OF THE S.W. 1/4 OF  
SEC. 24, T9N R9E 3RD PM  
MAG NAIL SET  
STA. 649+80.00



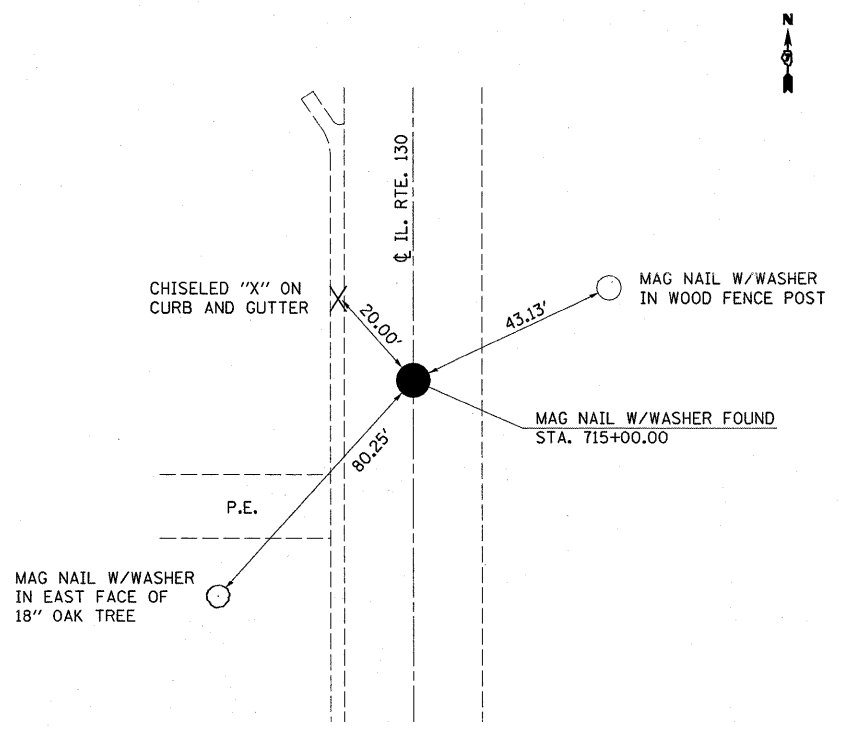
P.O.T. STA. 683+00.00



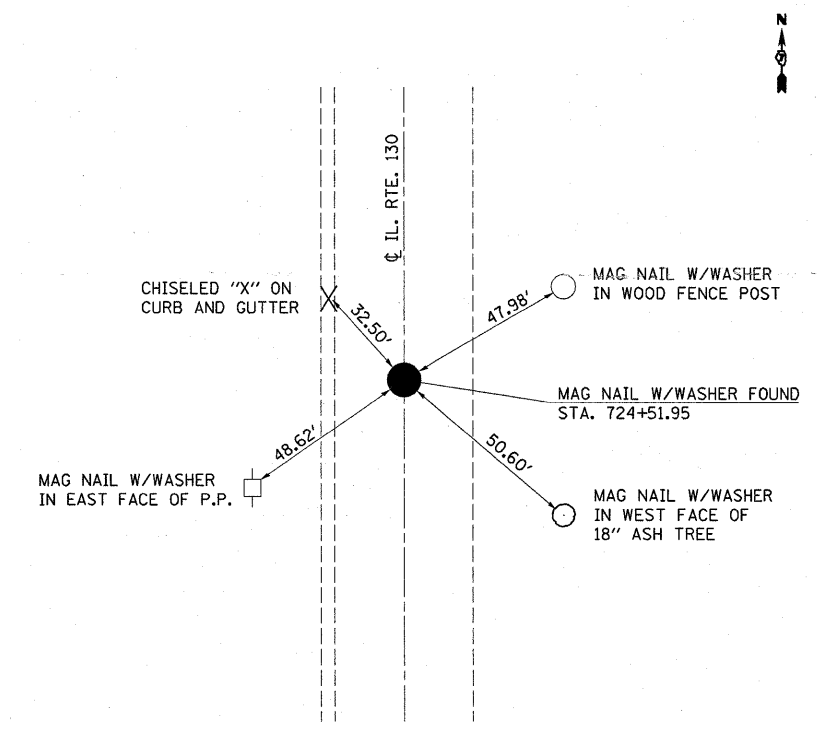
S.W. CORNER OF THE S.W. 1/4  
PIPE SET  
STA. 703+60



P.O.T. STA. 715+00.00



P.C. STA. 724+51.95



FILE NAME =	USER NAME = swartzrw	DESIGNED -	REVISED -
as\pw_work\PWIDOT\SWARTZRW\d0147989\d7	4410-shr-details.dgn	DRAWN -	REVISED -
	PLOT SCALE = 20.4651' / IN.	CHECKED -	REVISED -
	PLOT DATE = 1/21/2010	DATE -	REVISED -

STATE OF ILLINOIS  
DEPARTMENT OF TRANSPORTATION

TIE POINTS

SCALE: NA SHEET NO. 1 OF 2 SHEETS STA. TO STA.

* (F-XIRS-1, (113,120)RS-1		F.A.P. RTE.	SECTION	COUNTY	TOTAL SHEETS	SHEET NO.
		116	*	CUMBERLAND	25	13
		FED. ROAD DIST. NO.		ILLINOIS FED. AID PROJECT		
				CONTRACT NO. 74410		