

STATE OF ILLINOIS  
DEPARTMENT OF TRANSPORTATION  
DIVISION OF HIGHWAYS

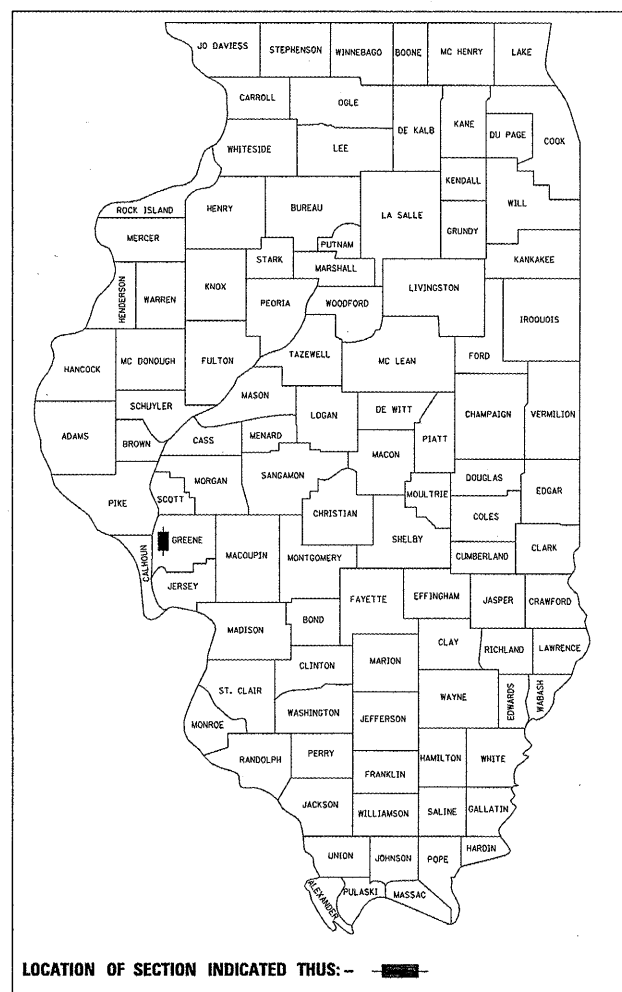
**PROPOSED  
HIGHWAY PLANS**

FAS ROUTE 739 (ELDRID/HILLVIEW RD.)  
SECTION 501, 502 RS-5

RESURFACING  
GREENE COUNTY

F.A.S. RTE.	SECTION	COUNTY	TOTAL SHEETS	SHEET NO.
739	501, 502 RS-5	GREENE	19	1
		ILLINOIS	CONTRACT NO. 76D70	

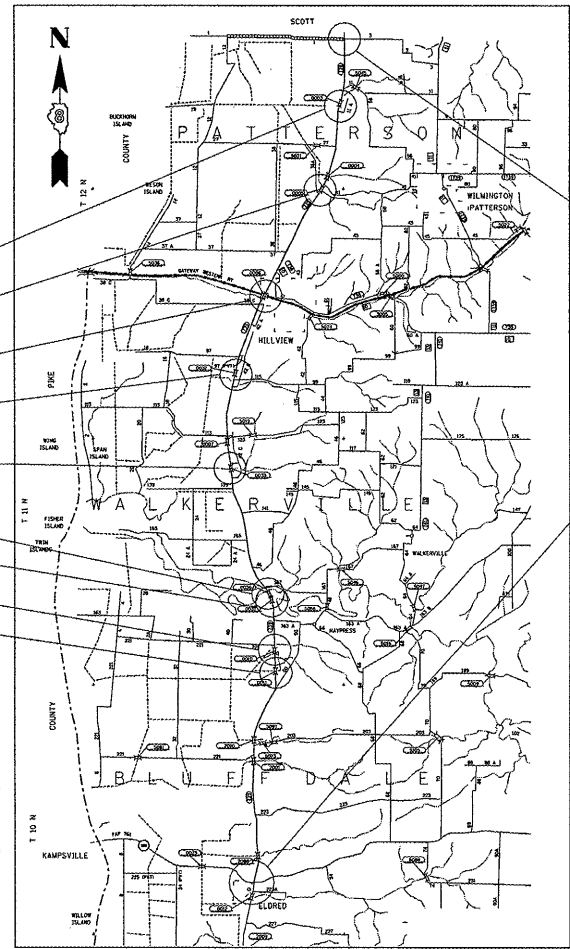
D-98-038-10



**INDEX OF SHEETS**

1. COVER SHEET
2. GENERAL NOTES, STANDARDS, COMMITMENTS
3. SUMMARY OF QUANTITIES
4. TYPICAL SECTION
5. LOCATION MAP WITH BRIDGE OMISSIONS
- 6.-13. SCHEDULES
14. MAILBOX TURNOUT DETAIL
15. PAVEMENT REMOVAL DETAIL
16. ENTRANCE AND SIDEROAD DETAILS
17. BUTT JOINT DETAILS
- 18.-19. CONCRETE GUTTER, TYPE A DETAILS

C-98-051-10



**BRIDGE OMISSIONS**

- SN. 031-0003 MILE 15.6
- SN. 031-0005 MILE 14.0
- SN. 031-0006 MILE 11.6
- SN. 031-0032 MILE 9.9
- SN. 031-0033 MILE 8.2
- SN. 031-0036 MILE 5.7
- SN. 031-0037 MILE 5.5
- SN. 031-0010 MILE 4.5
- SN. 031-0011 MILE 4.1

END SECTION  
MI STA 16.7  
LAT: 39.5215  
LONG: -90.5200

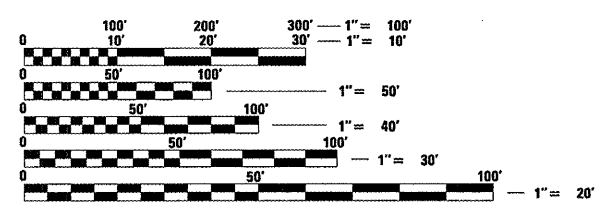
BEGIN SECTION  
MI STA 0.00  
LAT: 39.2892  
LONG: -90.5505

ADT INFO.  
ADT= 400  
SU= 1.5%  
MU= 0.1%  
MAJOR COLLECTOR

NOT TO SCALE

GROSS LENGTH = 88,176 FT. = 16.7 MILE  
NET LENGTH = 86,483 FT. = 16.38 MILE

**SCALES**



FULL SIZE PLANS HAVE BEEN PREPARED USING STANDARD ENGINEERING SCALES. REDUCED SIZED PLANS WILL NOT CONFORM TO STANDARD SCALES. IN MAKING MEASUREMENTS ON REDUCED PLANS, THE ABOVE SCALES MAY BE USED.

J.U.L.I.E.  
JOINT UTILITY LOCATION INFORMATION FOR EXCAVATION  
1-800-892-0123  
OR 811

PROJECT ENGINEER: LUKE WATERS 618-346-3194  
PROJECT MANAGER: TIM PADGETT 618-346-3325

CONTRACT NO. 76D70

STATE OF ILLINOIS  
DEPARTMENT OF TRANSPORTATION  
DIVISION OF HIGHWAYS

SUBMITTED 3/19 20 10

*Mary Kamie*  
DEPUTY DIRECTOR OF HIGHWAYS, REGION ENGINEER

*April 9, 2010*  
*Scott E. Stitt, P.E.*  
ENGINEER OF DESIGN AND ENVIRONMENT

*Christine M. Reed*  
DIRECTOR OF HIGHWAYS, CHIEF ENGINEER

**PRINTED BY THE AUTHORITY  
OF THE STATE OF ILLINOIS**

## GENERAL NOTES

- ① CONTRACTOR SHALL CHECK EXISTING SLOPE OF ROADWAY AND CORRECT TO A 2% SLOPE WITH LEVEL BINDER (MACHINE METHOD), N70. MINIMUM THICKNESS OF THE LEVELING BINDER (MACHINE METHOD)M, N70 SHALL BE 3/4".
- ② THE CONTRACTOR SHALL VERIFY ALL DIMENSIONS AND CONDITIONS IN THE FIELD PRIOR TO CONSTRUCTION AND ORDERING OF MATERIALS.
- ③ ILLINOIS STATE LAW REQUIRES A 48-HOUR NOTICE TO BE GIVEN TO UTILITIES BEFORE DIGGING. FIELD MARKING OF FACILITIES MAY BE OBTAINED BY CONTACTING J.U.L.I.E. OR FOR NON-MEMBERS, THE UTILITY COMPANY DIRECTLY. AGENCIES KNOWN TO HAVE FACILITIES WITHIN THE PROJECT AREA ARE AS FOLLOWS:

UTILITY	ABOVE GROUND	BELOW GROUND
* AMEREN CIPS	X	X
* CITY OF CARROLLTON		X
* ILLINOIS RURAL ELECTRIC COOPERATIVE	X	
* VERIZON NORTH, INC.	X	X
* CITY OF WHITE HALL (GAS)		X
* CITY OF WHITE HALL (WATER/WASTEWATER)		X

MEMBERS OF J.U.L.I.E. (800)-892-0123 ARE INDICATED BY \*. NON J.U.L.I.E. MEMBERS MUST BE NOTIFIED INDIVIDUALLY.

- ④ THE FOLLOWING MIXTURE REQUIREMENTS ARE APPLICABLE FOR THIS PROJECT:

MIXTURE USE	SURFACE	LEVEL BINDER	BASE CSE/BINDER
AC/PG	PG 64-22	PG 64-22	PG 64-22
RAP % (MAX)	SEE SPEC.	SEE SPEC.	SEE SPEC.
DESIGN AIR VOIDS	4.0% @ Ndes=70	4.0% @ Ndes=70	4.0% @ Ndes=70
MIX COMPOSITION			
(GRADATION MIXTURE)	IL 9.5	IL 9.5	IL 19.0
FRICITION AGG	MIXTURE "C"	MIXTURE "C"	MIXTURE "B"

BITUMINOUS MATERIALS (PRIME COAT) RATE = 0.00031 TON/SY.  
AGGREGATE (PRIME COAT) RATE = 0.0015 TON/SY.

\* HMA Surface shall meet IL 9.5 gradation.

\*\* Top Lift Shoulders - Design this mix at 2.0% voids and add asphalt to reduce voids to 1.5%.

Plan quantities for Bituminous Concrete Surface Course Items are calculated using a unit weight of 112 lb/sq yd/1n (53.8 kg/sq m/25 mm thickness).

- ⑤ THE THICKNESS OF THE BITUMINOUS MIXTURE SHOWN ON THE PLANS IS THE NOMINAL THICKNESS. DEVIATIONS FROM THE NOMINAL THICKNESS WILL BE PERMITTED WHEN SUCH DEVIATIONS OCCUR DUE TO IRREGULARITIES IN THE EXISTING SURFACE OR BASE ON WHICH THE BITUMINOUS MIXTURE IS PLACED.
- ⑥ ALL AREAS DISTURBED FOR ANY REASON SHALL BE PERMANENTLY SEEDED AS DIRECTED BY THE ENGINEER. ALL AREAS DISTURBED BY THE CONTRACTOR OUTSIDE THE PROPOSED CONSTRUCTION LIMITS SHALL BE SEEDED AT THE CONTRACTOR'S EXPENSE.

- ⑦ THE ROADWAY SHALL REMAIN OPEN TO TRAFFIC DURING CONSTRUCTION. NO OVERNIGHT LANE CLOSURES WILL BE ALLOWED ON THIS PROJECT.
- ⑧ THE RATES OF APPLICATION SHOWN IN THE PLANS ARE NOMINAL. DEVIATIONS WILL BE ALLOWED AS SPECIFIED BY THE ENGINEER IN ACCORDANCE WITH THE STANDARD SPECIFICATION
- ⑨ COORDINATION BETWEEN CONTRACTORS SHALL BE ACCORDING TO ARTICLE 105.08 OF THE STANDARD SPECIFICATIONS FOR ROAD AND BRIDGE CONSTRUCTION
- ⑩ ALL AGGREGATE PRIVATE ENTRANCES AND AGGREGATE SIDEROADS SHALL HAVE A 10' LONG AGGREGATE SURFACE COURSE, TYPE A WEDGE PLACED TO TRANSITION TO THE LEVEL OF THE HMA SURFACE COURSE, MIX "C", N70.
- ⑪ ALL TEMPORARY PAVEMENT MARKINGS SHALL BE PLACED IN SUCH A MANNER SO AS NOT TO INTERFERE WITH THE PLACEMENT OF PERMANENT PAVEMENT MARKINGS.
- ⑫ FLAGMEN SHALL BE PRESENT DURING ALL CLOSURE HOURS, INCLUDING LUNCH HOUR, AND NO ADDITIONAL COMPENSATION SHALL BE APPLIED.
- ⑬ CONTRACTOR SHALL BE AWARE THAT RIGHT OF WAY SPACE AT ALL CULVERT LOCATIONS MAY BE AT A MINIMUM. CONTRACTOR SHALL BE RESPONSIBLE FOR STAYING ON R.O.W. OR OBTAINING TEMPORARY USE PERMITS.
- ⑭ SHORT TERM PAVEMENT MARKING SHALL BE APPLIED TO PRIMED, LEVELING BINDER, AND FINAL SURFACE. ONLY REMOVAL FROM FINAL SURFACE SHALL BE PAID FOR AS WORK ZONE PAVEMENT MARKING REMOVAL.
- ⑮ ALL AREAS ON STATE R.O.W. DISTURBED DURING INSTALLATION OF PIPE CULVERT LINERS SHALL BE SEEDED TO THE SATISFACTION OF THE ENGINEER. THE COST THE POTASSIUM, NITROGEN, AND PHOSPHOROUS FERTILIZER AS WELL AS SEEDING, CLASS 2 AND MULCH, METHOD 2 SHALL BE INCLUDED IN THE COST OF THE PAY ITEM FOR PIPE CULVERT LINERS AT THE DIAMETER SPECIFIED.

## STANDARDS

000001-05  
001006  
406201-01  
606101-04  
701001-02  
701006-03  
701011-02  
701201-03  
701301-03  
701306-02  
701311-03  
701326-03  
701901-01  
780001-02

## COMMITMENTS

NONE

FILE NAME =	USER NAME = waterle	DESIGNED - ---	REVISED - ---	<b>STATE OF ILLINOIS DEPARTMENT OF TRANSPORTATION</b>	<b>TYPICAL SECTIONS</b>	F.A.S RTE.	SECTION	COUNTY	TOTAL SHEETS	SHEET NO.
c:\pwork\pwork\waterle\d0174276\d876d78-sht-plan.dgn		DRAWN - ---	REVISED - ---			739	501, 502 RS-5	GREENE	19	2
PLOT SCALE = 1/8" = 1' / IN.		CHECKED - ---	REVISED - ---		SCALE: -----					
PLOT DATE = 3/18/2010		DATE - -----	REVISED - ---		SHEET NO. 1 OF 1 SHEETS		STA. ----- TO STA. -----			CONTRAC NO. 76D70
						FED. ROAD DIST. NO. 8 ILLINOIS FED. AID PROJECT				

# SUMMARY OF QUANTITIES

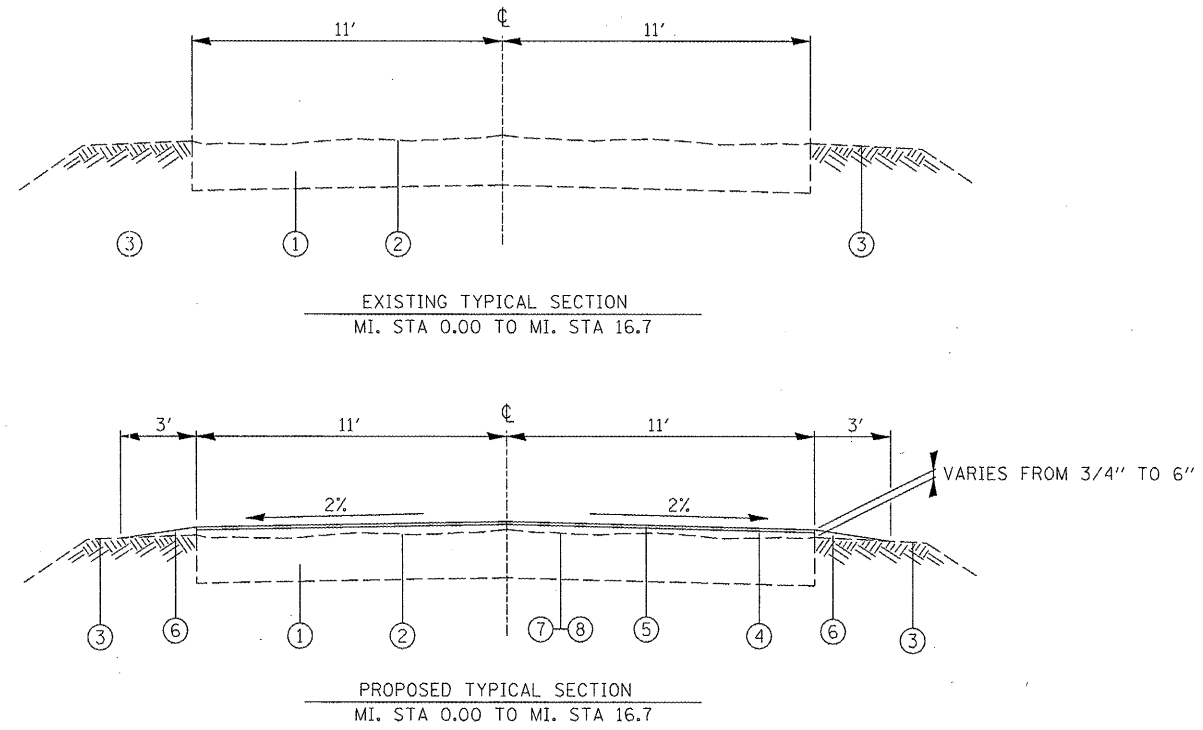
*100% STATE*

SUMMARY OF QUANTITIES			CONSTRUCTION TYPE CODE			SUMMARY OF QUANTITIES			CONSTRUCTION TYPE CODE		
CODE NO	ITEM	UNIT	TOTAL QUANTITIES	1000		CODE NO	ITEM	UNIT	TOTAL QUANTITIES		
35100300	AGGREGATE BASE COURSE, TYPE A 4"	SQ YD	870	870							
35501326	HOT-MIX ASPHALT BASE COURSE, 10 1/2"	SQ YD	305	305							
40200100	AGGREGATE SURFACE COURSE, TYPE A	TON	332	332							
40600200	BITUMINOUS MATERIALS (PRIME COAT)	TON	68	68							
40600300	AGGREGATE (PRIME COAT)	TON	331	331							
40600635	LEVELING BINDER (MACHINE METHOD), N70	TON	22028	22028							
40600982	HOT-MIX ASPHALT SURFACE REMOVAL - BUTT JOINT	SQ YD	4198	4198							
40600990	TEMPORARY RAMP	SQ YD	1849	1849							
40603315	HOT-MIX ASPHALT SURFACE COURSE, MIX "C", N70	TON	18405	18405							
40800020	BITUMINOUS MATERIALS (PRIME COAT)	TON	1	1							
40800050	INCIDENTAL HOT-MIX ASPHALT SURFACING	TON	455	455							
44000100	PAVEMENT REMOVAL	SQ YD	305	305							
44000400	GUTTER REMOVAL	FOOT	2511	2511							
48101200	AGGREGATE SHOULDERS, TYPE B	TON	89	89							
48102100	AGGREGATE WEDGE SHOULDER, TYPE B	TON	5503	5503							
54390140	INSERTION CULVERT LINER 18"	FOOT	112	112							
54390180	INSERTION CULVERT LINER 24"	FOOT	1088	1088							
54390210	INSERTION CULVERT LINER 30"	FOOT	4084	4084							
54390230	INSERTION CULVERT LINER 36"	FOOT	1670	1670							
60600095	CLASS SI CONCRETE (OUTLET)	CU YD	63.9	63.9							
60602500	CONCRETE GUTTER, TYPE A	FOOT	2063	2063							
67000400	ENGINEER'S FIELD OFFICE, TYPE A	CAL MO	18	18							
67100100	MOBILIZATION	L SUM	1	1							
70100450	TRAFFIC CONTROL AND PROTECTION, STANDARD 701201	L SUM	1	1							
70100460	TRAFFIC CONTROL AND PROTECTION, STANDARD 701306	L SUM	1	1							
70100500	TRAFFIC CONTROL AND PROTECTION, STANDARD 701326	L SUM	1	1							
70103815	TRAFFIC CONTROL SURVEILLANCE	CAL DA	30	30							
70300100	SHORT-TERM PAVEMENT MARKING	FOOT	24048	24048							
70300220	TEMPORARY PAVEMENT MARKING - LINE 4"	FOOT	188160	188160							
70301000	WORK ZONE PAVEMENT MARKING REMOVAL	SQ FT	23343	23343							
*78000200	THERMOPLASTIC PAVEMENT MARKING - LINE 4"	FOOT	62720	62720							

*\*Specialty Items*

FILE NAME =	USER NAME = watersle	DESIGNED -	REVISED -	<b>STATE OF ILLINOIS DEPARTMENT OF TRANSPORTATION</b>	<b>SUMMARY OF QUANTITIES</b>	F.A.S. RTE.	SECTION	COUNTY	TOTAL SHEETS	SHEET NO.	
		DRAWN -	REVISED -			739	501, 502 RS-5	GREENE	19	3	
		CHECKED -	REVISED -			CONTRACT NO. 76D70					
		DATE -	REVISED -			FED. ROAD DIST. NO. 8 ILLINOIS FED. AID PROJECT					

SCALE: \_\_\_\_\_ SHEET NO. 1 OF 1 SHEETS STA. \_\_\_\_\_ TO STA. \_\_\_\_\_



- LEGEND
- ① EXISTING PAVEMENT
  - ② EXISTING BITUMINOUS A-3 MODIFIED TREATMENT
  - ③ EXISTING EARTH SHOULDER
  - ④ PROPOSED LEVELING BINDER (MACHINE METHOD), N70 VAR. DEPTH
  - ⑤ PROPOSED HMA SURFACE COURSE, MIX "C", N70 1 1/2"
  - ⑥ PROPOSED AGGREGATE WEDGE SHOULDER, TYPE B
  - ⑦ PROPOSED BITUMINOUS MATERIALS (PRIME COAT)
  - ⑧ PROPOSED AGGREGATE (PRIME COAT)

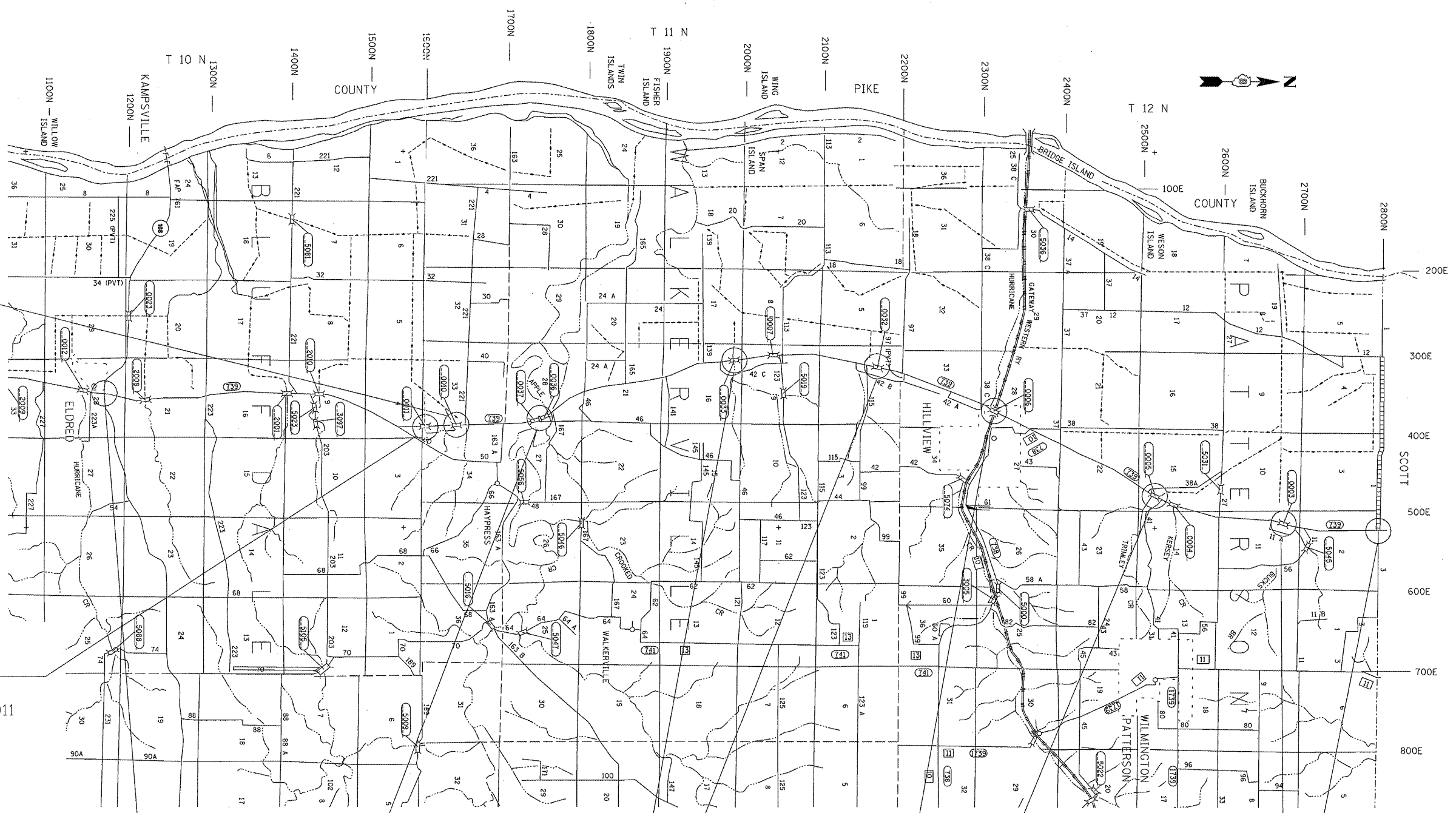
FILE NAME =	USER NAME = watersle	DESIGNED -	REVISED -
a:\pwork\pwork\watersle\d0174276\d876	d78-sht-plan.dgn	DRAWN -	REVISED -
	PLOT SCALE = 1/32" = 1' / IN.	CHECKED -	REVISED -
	PLOT DATE = 3/18/2010	DATE -	REVISED -

**STATE OF ILLINOIS  
DEPARTMENT OF TRANSPORTATION**

**TYPICAL SECTIONS**

SCALE: \_\_\_\_\_ SHEET NO. 1 OF 1 SHEETS STA. \_\_\_\_\_ TO STA. \_\_\_\_\_

F.A.S. RTE.	SECTION	COUNTY	TOTAL SHEETS	SHEET NO.
739	501, 502 RS-5	GREENE	19	4
CONTRAC NO. 76D70				
FED. ROAD DIST. NO. 8 ILLINOIS FED. AID PROJECT				



BRIDGE OMISSION  
192' SOUTH AND 267'  
NORTH OF SN. 031-0010  
AT MILE STA. 4.5

BRIDGE OMISSION  
262' SOUTH AND 262'  
NORTH OF SN. 031-0011  
AT MILE STA. 4.1

BEGIN PROJECT  
MI. STA 0.0  
ROUTE IL 108 & FAS 739

BRIDGE OMISSION  
MI. STA. 5.5 & 5.7  
SN. 031-0037  
SN. 031-0036

BRIDGE OMISSION  
MI. STA. 8.2  
SN. 031-0033

BRIDGE OMISSION  
MI. STA. 9.9  
SN. 031-0032

BRIDGE OMISSION  
MI. STA. 11.6  
SN. 031-0006  
HILLVIEW

BRIDGE OMISSION  
MI. STA. 15.6  
SN. 031-0003

BRIDGE OMISSION  
MI. STA. 14.0  
SN. 031-0005

END PROJECT  
MI. STA 16.7  
SCOTT CO. LINE

NOTE: SN. 031-0011 AND SN. 031-0010 ARE BEING REMOVED AND REPLACED, SEE BRIDGE OMISSION FOR EXACT LOCATION OF PAVING LIMITS. ALL OTHER BRIDGES SHALL BE PAVED UP TO EITHER THE BRIDGE APPROACH OR THE ACTUAL BRIDGE.

NOTE TO SCALE

FILE NAME =	USER NAME = waterslo	DESIGNED -	REVISED -	<b>STATE OF ILLINOIS DEPARTMENT OF TRANSPORTATION</b>	<b>LOCATION MAP WITH BRIDGE OMISSIONS</b>	F.A.S RTE.	SECTION	COUNTY	TOTAL SHEETS	SHEET NO.
c:\pw_work\puidot\waterslo\d0174276\d878d78-sht-plan.dgn	DRAWN -	REVISED -	739			501, 502 RS-5	GREENE	19	5	
PLOT SCALE = 1/83.1218 ' / IN.	CHECKED -	REVISED -	SCALE: _____ SHEET NO. 1 OF 1 SHEETS			CONTRACT NO. 76D70				
PLOT DATE = 3/18/2010	DATE -	REVISED -	STA. _____ TO STA. _____			FED. ROAD DIST. NO. 8 ILLINOIS FED. AID PROJECT				

THERMOPLASTIC PVNT MK LINE-4" SCHEDULE (TABLE 1 OF 3)

LOCATION (MILE STA.)	SKIP DASH (FOOT)	DOUBLE YELLOW (FOOT)	SOLID YELLOW (FOOT)	REMARKS
0.00 TO 0.50	660			
0.50 TO 0.65	200		800	N.P.Z.N.B.
0.65 TO 0.70	60			
0.70 TO 0.80	140		520	N.P.Z.S.B.
0.80 TO 1.10	400			
1.10 TO 1.20	140		520	N.P.Z.N.B.
1.20 TO 1.30	140			
1.30 TO 1.40	140		520	N.P.Z.S.B.
1.40 TO 1.60	260			
1.60 TO 1.80	260		1060	N.P.Z.N.B.
1.80 TO 1.95	200		800	N.P.Z.S.B.
1.95 TO 2.50	720			
2.50 TO 2.70	260		1060	N.P.Z.N.B.
2.70 TO 2.75		520		DOUBLE N.P.Z.
2.75 TO 2.90	200		800	N.P.Z.S.B.
2.90 TO 3.00	140			
3.00 TO 3.10	140		520	N.P.Z.N.B.
3.10 TO 3.20	140			
3.20 TO 3.30	140		520	N.P.Z.S.B.
3.30 TO 3.40	140			
3.40 TO 3.60	260		1060	N.P.Z.N.B.
3.60 TO 3.70		1060		DOUBLE N.P.Z.
3.70 TO 3.90	260		1060	N.P.Z.S.B.
3.90 TO 4.80	810			
4.80 TO 4.85	60		260	N.P.Z.N.B.
4.85 TO 4.95		1060		DOUBLE N.P.Z.
4.95 TO 5.10	200		800	N.P.Z.S.B.
5.10 TO 5.15	60			
5.15 TO 5.25	140		520	N.P.Z.N.B.
5.60 TO 5.65	60		260	N.P.Z.S.B.
5.65 TO 5.90	340			
5.90 TO 6.05	200		800	N.P.Z.N.B.
6.05 TO 6.10	60			
6.10 TO 6.25	200		800	N.P.Z.S.B.
6.25 TO 6.50	340			
6.50 TO 6.60	140		520	N.P.Z.N.B.
6.60 TO 6.70	140			
6.70 TO 6.80	140		520	N.P.Z.S.B.

CONTINUED IN NEXT TABLE

THERMOPLASTIC PVNT MK LINE-4" SCHEDULE (TABLE 2 OF 3)

LOCATION (MILE STA.)	SKIP DASH (FOOT)	DOUBLE YELLOW (FOOT)	SOLID YELLOW (FOOT)	REMARKS
6.80 TO 6.90	140			
6.90 TO 7.05	200		800	N.P.Z.N.B.
7.05 TO 7.10	60			
7.10 TO 7.25	200		800	N.P.Z.S.B.
7.25 TO 7.40	200			
7.40 TO 7.50	140		520	N.P.Z.N.B.
7.50 TO 7.60	140			
7.60 TO 7.70	140		520	N.P.Z.S.B.
7.70 TO 7.80	140			
7.80 TO 7.90	140		520	N.P.Z.N.B.
7.90 TO 7.93	40			
7.95 TO 8.00	60			
8.00 TO 8.05	60		260	N.P.Z.S.B.
8.05 TO 8.10		520		DOUBLE N.P.Z.
8.10 TO 8.15	60		260	N.P.Z.N.B.
8.15 TO 8.30	200			
8.30 TO 8.35	60		260	N.P.Z.S.B.
8.35 TO 8.40		520		DOUBLE N.P.Z.
8.40 TO 8.50	140		520	N.P.Z.N.B.
8.55 TO 8.70	200		800	N.P.Z.S.B.
8.70 TO 9.10	520			
9.10 TO 9.20	140		520	N.P.Z.N.B.
9.20 TO 9.30	140			
9.30 TO 9.40	140		520	N.P.Z.S.B.
9.40 TO 9.42		220		DOUBLE N.P.Z.
9.42 TO 9.60	240		960	N.P.Z.N.B.
9.60 TO 9.80	260		1060	N.P.Z.S.B.
9.80 TO 9.81	20			
9.81 TO 9.95	180		740	N.P.Z.N.B.
9.95 TO 10.00	60			
10.00 TO 10.10	140		520	N.P.Z.S.B.
10.10 TO 11.00	1180			
11.00 TO 11.15	200		800	N.P.Z.N.B.
11.30 TO 11.50	260		1060	N.P.Z.S.B.
11.50 TO 12.20	920			
12.20 TO 12.40	260		1060	N.P.Z.N.B.
12.40 TO 12.45	60			
12.45 TO 12.60	200		800	N.P.Z.S.B.
12.60 TO 12.80	260			

CONTINUED IN NEXT TABLE

THERMOPLASTIC PVNT MK LINE-4" SCHEDULE (TABLE 3 OF 3)

LOCATION (MILE STA.)	SKIP DASH (FOOT)	DOUBLE YELLOW (FOOT)	SOLID YELLOW (FOOT)	REMARKS
12.80 TO 12.95	200		800	N.P.Z.N.B.
12.95 TO 13.00	60			
13.00 TO 13.15	200		800	N.P.Z.S.B.
13.15 TO 13.30	200			
13.30 TO 13.50	260		1060	N.P.Z.N.B.
13.51 TO 13.52	20		60	N.P.Z.N.B.
13.52 TO 13.70		1900		DOUBLE N.P.Z.
13.70 TO 13.90	260		1060	N.P.Z.S.B.
13.90 TO 14.10	260			
14.10 TO 14.30	260		1060	N.P.Z.N.B.
14.30 TO 14.60		3160		DOUBLE N.P.Z.
14.60 TO 14.75	200		800	N.P.Z.S.B.
14.75 TO 15.00	340			
15.10 TO 15.60	660			
15.60 TO 15.70	140		520	N.P.Z.N.B.
15.70 TO 15.80	140			
15.80 TO 15.95	200		800	N.P.Z.S.B.
15.95 TO 16.70	990			
SUB - TOTAL =	19780	8960	33980	
TOTAL =	62720			

N.P.Z.N.B. - NO PASSING ZONE, NORTH BOUND  
S.P.Z.S.B. - NO PASSING ZONE, SOUTH BOUND

PAVEMENT MARKING SCHEDULE

LOCATION	SHORT TERM PAVEMENT MARKING ( 3 APPS. )	TEMPORARY PAVEMENT MK LINE 4" ( 3 APPS. )	WORK ZONE PAVEMENT MARKING REMOVAL
MILE STATION	FOOT	FOOT	SQ. FT.
0.00 TO 16.70	24048	188160	23343
TOTAL	24048	188160	23343

FILE NAME =	USER NAME = wotersle	DESIGNED -	REVISED -	<b>STATE OF ILLINOIS DEPARTMENT OF TRANSPORTATION</b>	<b>SCHEDULES</b>	F.A.S. RTE.	SECTION	COUNTY	TOTAL SHEETS	SHEET NO.
a:\pwork\pidot\wotersle\0174276\087878-sht-plan.dgn	DRAWN -	REVISED -	739			501, 502 RS-5	GREENE	19	6	
PLOT SCALE = 1/8" = 1' IN.	CHECKED -	REVISED -	CONTRACT NO. 76D70							
PLOT DATE = 3/18/2010	DATE -	REVISED -	FED. ROAD DIST. NO. 8 ILLINOIS FED. AID PROJECT							
SCALE: _____ SHEET NO. 1 OF 8 SHEETS STA. _____ TO STA. _____										

SIDE ROAD AND ENTRANCES SCHEDULE (TABLE 1 OF 3)

MILE STA.	TYPE	MATERIAL	WIDTH (FT)	AGG. SURF. CSE., TYPE A (TON)	INC. HMA SURFACING (TON)	BIT. MAT. (PRIME COAT) (TON)	REMARKS
0.0 RT	PRIVATE ENTRANCE	AGGREGATE	22	2.68			
0.3 RT	PRIVATE ENTRANCE	AGGREGATE	20	2.44			
0.3 RT	PRIVATE ENTRANCE	AGGREGATE	19	2.32			
0.4 RT	PRIVATE ENTRANCE	AGGREGATE	16	1.96			
0.5 RT	PRIVATE ENTRANCE	AGGREGATE	26	3.18			
1.2 RT	PRIVATE ENTRANCE	AGGREGATE	56	6.84			
1.3 RT	SIDEROAD 1300N	OIL & CHIP	38		12.90	0.026	
2.3 LT	SIDEROAD 1400N	OIL & CHIP	56		19.02	0.039	
2.3 RT	PRIVATE ENTRANCE	AGGREGATE	44	5.38			
2.6 RT	UNKNOWN SIDEROAD	OIL & CHIP	54		18.34	0.037	
2.7 RT	PRIVATE ENTRANCE	AGGREGATE	40	4.88			
3.3 LT	PRIVATE ENTRANCE	AGGREGATE	32	3.92			
3.7 RT	PRIVATE ENTRANCE	AGGREGATE	76	9.28			
4.6 LT	UNKNOWN SIDEROAD	OIL & CHIP	78		26.48	0.054	
5.1 RT	ROAD TO HAYPRESS	OIL & CHIP	53		18.00	0.037	
5.8 RT	UNKOWN SIDEROAD	OIL & CHIP	58		19.70	0.040	NORTH OF APPLE CREEK
6.1 RT	PRIVATE ENTRANCE	AGGREGATE	51	6.24			
6.2 RT	SIDEROAD 1800N	AGGREGATE	34		11.54	0.023	ROAD BY OLD STONE MANSION
6.6 RT	PRIVATE ENTRANCE	AGGREGATE	30	3.66			
6.7 RT	PRIVATE ENTRANCE	AGGREGATE	31	3.78			
6.7 LT	SIDEROAD 1850N	AGGREGATE	50		16.98	0.034	
6.7 RT	PRIVATE ENTRANCE	AGGREGATE	40	4.88			
6.8 RT	PRIVATE ENTRANCE	AGGREGATE	58	7.08			
6.8 RT	PRIVATE ENTRANCE	AGGREGATE	60	7.34			
6.9 RT	PRIVATE ENTRANCE	AGGREGATE	35	4.28			

CONTINUED ON NEXT PAGE

FILE NAME =	USER NAME = watersle	DESIGNED -	REVISED -	<b>STATE OF ILLINOIS DEPARTMENT OF TRANSPORTATION</b>	<b>SCHEDULES</b>	F.A.S. RTE.	SECTION	COUNTY	TOTAL SHEETS	SHEET NO.
c:\pwwork\pwwork\watersle\d0174278\d078470-sht-plan.dgn	DRAWN -	REVISED -	739			501, 502 RS-5	GREENE	19	7	
PLOT SCALE = 1/8" = 1' IN.	CHECKED -	REVISED -	CONTRACT NO. 76D70							
PLOT DATE = 3/18/2010	DATE -	REVISED -	SCALE: _____			SHEET NO. 2 OF 8 SHEETS	STA. _____ TO STA. _____	FED. ROAD DIST. NO. 8 ILLINOIS FED. AID PROJECT		

SIDE ROAD AND ENTRANCES SCHEDULE (TABLE 2 OF 3)

MILE STA.	TYPE	MATERIAL	WIDTH (FT)	AGG. SURF. CSE., TYPE A (TON)	INC. HMA SURFACING (TON)	BIT. MAT. (PRIME COAT) (TON)	REMARKS
7.2 LT	PRIVATE ENTRANCE	AGGREGATE	18	2.20			
7.2 RT	PRIVATE ENTRANCE	AGGREGATE	23	2.82			
7.3 RT	SIDEROAD 1900N	OIL & CHIP	65		22.08	0.045	
7.7 LT	SIDEROAD 1950N	AGGREGATE	36		12.22	0.025	
8.1 RT	PRIVATE ENTRANCE	AGGREGATE	24	2.94			
8.1 RT	PRIVATE ENTRANCE	AGGREGATE	36	4.40			
8.2 RT	PRIVATE ENTRANCE	AGGREGATE	38	4.64			
8.4 RT	PRIVATE ENTRANCE	AGGREGATE	30	3.66			
8.7 RT	SIDEROAD 2050N	OIL & CHIP	45		15.28	0.031	
8.7 LT	UNKNOWN SIDEROAD	OIL & CHIP	35		11.88	0.024	
8.7 RT	PRIVATE ENTRANCE	AGGREGATE	35	4.28			
8.8 RT	PRIVATE ENTRANCE	AGGREGATE	40	4.88			
9.7 RT	PRIVATE ENTRANCE	AGGREGATE	28	3.42			
9.8 RT	SIDEROAD 2160N	OIL & CHIP	72		24.44	0.050	
10.3 LT	UNKNOWN SIDEROAD	OIL & CHIP	52		17.66	0.036	
10.9 RT	PRIVATE ENTRANCE	AGGREGATE	46	5.62			
11.0 LT	PRIVATE ENTRANCE	CONCRETE	40		13.58	0.028	
11.0 LT	PRIVATE ENTRANCE	CONCRETE	43		14.60	0.030	
11.3 RT	UNKNOWN SIDEROAD	OIL & CHIP	65		22.08	0.045	ROAD BEFORE HILLVIEW BRIDGE
11.3 LT	UNKNOWN SIDEROAD	AGGREGATE	45		15.28	0.031	
11.9 RT	PRIVATE ENTRANCE	AGGREGATE	42	5.14			
12.0 RT	SIDEROAD 2360N	OIL & CHIP	110		37.36	0.076	
12.1 LT	PRIVATE ENTRANCE	AGGREGATE	27	3.30			CROP PRODUCTION SERVICES
12.1 LT	PRIVATE ENTRANCE	AGGREGATE	40	4.88			CROP PRODUCTION SERVICES
12.5 LT	UNKNOWN SIDEROAD	OIL & CHIP	54		18.34	0.037	

CONTINUED ON NEXT PAGE

FILE NAME =	USER NAME = watersle	DESIGNED -	REVISED -	<b>STATE OF ILLINOIS DEPARTMENT OF TRANSPORTATION</b>	<b>SCHEDULES</b>	F.A.S. RTE.	SECTION	COUNTY	TOTAL SHEETS	SHEET NO.
c:\pwork\pwork\watersle\d0174276\d87670-sht-plan.dgn	DRAWN -	REVISED -	739			501, 502 RS-5	GREENE	19	8	
PLOT SCALE = 1/8" = 1' / IN.	CHECKED -	REVISED -	CONTRACT NO. 76D70							
PLOT DATE = 3/18/2010	DATE -	REVISED -	FED. ROAD DIST. NO. 8 ILLINOIS FED. AID PROJECT							
SCALE: _____ SHEET NO. 3 OF 8 SHEETS STA. _____ TO STA. _____										



SIDE ROAD AND ENTRANCES SCHEDULE (TABLE 3 OF 3)

MILE STA.	TYPE	MATERIAL	WIDTH (FT)	AGG. SURF. CSE., TYPE A (TON)	INC. HMA SURFACING (TON)	BIT. MAT. (PRIME COAT) (TON)	REMARKS
12.7 RT	PRIVATE ENTRANCE	AGGREGATE	22	2.68			
13.0 RT	PRIVATE ENTRANCE	AGGREGATE	44	5.38			
13.8 LT	UNKNOWN SIDEROAD	OIL & CHIP	40		13.58	0.028	
13.9 RT	UNKNOWN SIDEROAD	OIL & CHIP	46		15.62	0.032	
14.1 RT	PRIVATE ENTRANCE	AGGREGATE	40	4.88			SPANGENBURG'S
14.7 RT	PRIVATE ENTRANCE	AGGREGATE	20	2.44			
14.7 LT	SIDEROAD 2600N	AGGREGATE	55		18.68	0.038	
14.9 RT	PRIVATE ENTRANCE	AGGREGATE	28	3.42			
15.4 RT	SIDEROAD 2675N	OIL & CHIP	33		11.20	0.023	
15.7 RT	SIDEROAD 2710N	OIL & CHIP	48		16.30	0.033	
15.7 RT	SIDEROAD 2710N	OIL & CHIP	35		11.88	0.024	
16.0 RT	PRIVATE ENTRANCE	AGGREGATE	35	4.28			

SIDE ROAD AND ENTRANCES TOTALS

	AGG. SURF. CSE., TYPE A (TON)	INC. HMA SURFACING (TON)	BIT. MAT. (PRIME COAT) (TON)
SUBTOTAL	155.4	455.02	0.93
ROUNDED TOTAL	155	455	1

MAILBOX TURNOUT SCHEDULE

MILE STA.	MATERIAL	REMARKS	AVERAGE DEPTH (FT)	AGG. SURF. CSE. TY. A (TON)
0.0 RT	AGGREGATE	LOCATED AT PRIVATE ENTRANCE	0.33	5.7
0.3 RT	AGGREGATE	LOCATED AT PRIVATE ENTRANCE	0.33	5.7
0.3 RT	AGGREGATE	LOCATED AT PRIVATE ENTRANCE	0.33	5.8
0.5 RT	AGGREGATE	LOCATED AT PRIVATE ENTRANCE	0.33	9.0
1.3 RT	AGGREGATE	LOCATED AT PRIVATE ENTRANCE	0.33	4.3
3.3 RT	AGGREGATE	LOCATED AT PRIVATE ENTRANCE	0.33	9.0
6.1 LT	AGGREGATE	LOCATED AT PRIVATE ENTRANCE (NEED TO MOVE)	0.5	13.6
6.6 LT	AGGREGATE	LOCATED AT PRIVATE ENTRANCE (NEED TO MOVE)	N/A	12.4
6.9 LT	AGGREGATE	LOCATED AT PRIVATE ENTRANCE (NEED TO MOVE)	N/A	12.8
7.2 LT	AGGREGATE	LOCATED AT PRIVATE ENTRANCE (NEED TO MOVE)	0.33	5.8
7.3 LT	AGGREGATE	(3) MAILBOXES LOCATED AT SIDEROAD 1900N	0.33	9.0
8.2 LT	AGGREGATE	(2) MAILBOXES LOCATED AT PRIVATE ENTRANCE	0.33	9.0
8.4 LT	AGGREGATE	LOCATED AT PRIVATE ENTRANCE (NEED TO MOVE)	N/A	16.6
8.8 LT	AGGREGATE	(2) MAILBOXES LOCATED AT PRIVATE ENTRANCE	0.33	9.0
10.9 LT	AGGREGATE	LOCATED AT PRIVATE ENTRANCE	0.33	9.0
14.1 LT	GRASS	LOCATED AT PRIVATE ENTRANCE (SPANGENBURG'S)	0.33	9.0
14.7 LT	GRASS	LOCATED AT PRIVATE ENTRANCE	0.33	9.0
14.9 LT	AGGREGATE	LOCATED AT PRIVATE ENTRANCE (NEED TO MOVE)	0.5	13.6
16.0 RT	AGGREGATE	LOCATED AT PRIVATE ENTRANCE	0.33	9.0
			SUBTOTAL	177.3
			ROUNDED TOTAL	177

FILE NAME =	USER NAME = woterele	DESIGNED -	REVISED -	<b>STATE OF ILLINOIS DEPARTMENT OF TRANSPORTATION</b>	<b>SCHEDULES</b>			F.A.S. RTE.	SECTION	COUNTY	TOTAL SHEETS	SHEET NO.
ca:\pw\work\pmdot\watersle\d0174276\d876d70-sht-plan.dgn		DRAWN -	REVISED -		SCALE: _____	SHEET NO. 5 OF 8 SHEETS	STA. _____ TO STA. _____	739	501, 502 RS-5	GREENE	19	10
		CHECKED -	REVISED -								CONTRACT NO. 76D70	
		DATE -	REVISED -							FED. ROAD DIST. NO. 8 ILLINOIS FED. AID PROJECT		

PAVING SCHEDULE

MILE STATION	BITUMINOUS MATERIALS (PRIME COAT) (TON)	AGGREGATE (PRIME COAT) (TON)	LEVELING BINDER (MACHINE METHOD), N70 (TON)	HOT-MIX ASPHALT SURFACE COURSE, MIX "C", N70 (TON)	LT. AGGREGATE WEDGE SHOULDERS, TYPE B (TON)	RT. AGGREGATE WEDGE SHOULDERS, TYPE B (TON)
0.0 TO 0.5	2.12	10.27	835.71	640.17	125.94	103.26
0.5 TO 1.0	2.02	9.75	646.95	593.27	107.15	106.91
1.0 TO 1.5	2.02	9.79	458.19	546.48	88.37	105.69
1.5 TO 2.0	2.05	9.90	505.53	552.52	80.74	93.55
2.0 TO 2.5	2.05	9.94	630.75	556.49	60.98	78.79
2.5 TO 3.0	2.04	9.86	646.58	552.55	56.90	73.79
3.0 TO 3.5	2.04	9.86	547.60	552.55	49.39	90.20
3.5 TO 4.0	2.07	10.01	521.67	560.68	56.51	67.94
4.0 TO 4.5	1.66	8.03	341.68	449.56	37.37	26.64
4.5 TO 5.0	1.57	7.58	328.94	424.68	48.42	30.5
5.0 TO 5.5	1.58	7.64	526.59	538.24	81.22	40.78
5.5 TO 6.0	2.20	10.65	313.18	397.37	55.01	24.00
6.0 TO 6.5	2.05	9.92	446.46	555.50	94.53	40.09
6.5 TO 7.0	2.05	9.92	702.22	555.50	148.88	50.46
7.0 TO 7.5	2.05	9.94	846.18	554.52	180.16	53.42
7.5 TO 8.0	2.07	10.03	737.17	558.80	123.31	51.61
8.0 TO 8.5	2.03	9.83	533.33	545.39	55.58	47.78
8.5 TO 9.0	2.01	9.75	462.60	556.61	50.34	49.30
9.0 TO 9.5	2.06	9.99	490.51	567.94	91.82	77.65
9.5 TO 10.0	1.97	9.55	552.31	530.11	125.46	97.12
10.0 TO 10.5	2.05	9.90	539.35	531.04	142.65	104.33
10.5 TO 11.0	2.16	10.43	456.21	560.68	94.49	99.01
11.0 TO 11.8	2.98	14.43	799.06	776.03	62.68	86.17
11.8 TO 12.5	2.93	14.17	1056.72	778.05	166.24	119.39
12.5 TO 13.0	2.03	9.81	907.75	553.29	99.18	109.77
13.0 TO 13.5	2.08	10.05	934.93	536.52	45.15	106.8
13.5 TO 14.0	2.12	10.25	854.08	525.92	47.67	99.34
14.0 TO 14.5	2.02	9.75	704.47	525.37	76.64	73.87
14.5 TO 15.0	2.07	10.03	743.54	561.91	138.19	65.91
15.0 TO 15.5	2.07	10.01	882.49	561.91	157.58	64.83
15.5 TO 16.0	1.89	9.15	813.63	518.06	145.28	58.46
16.0 TO 16.5	2.11	10.19	882.49	561.91	220.61	91.04
16.5 TO 16.7	0.85	4.13	441.24	280.96		
WIDENED AREAS AROUND STRUCTURES 031-0007, 031-0036, 031-0033, 031-0007, 031-0032, 031-0006, & 031-0005	1.27	6.15	961.35	344.43	N/A	N/A
<b>SUBTOTAL</b>					3114.44	2388.40
<b>TOTAL</b>	68.34	330.66	22027.72	18405.01	5502.84	
<b>ROUNDED TOTALS</b>	68	331	22028	18405	5503	

NOTE: QUANTITIES HAVE BRIDGE OMISSIONS CALCULATED INTO THEM  
 NOTE: AGGREGATE WEDGE, TYPE B QUANTITIES HAVE BRIDGE, SIDEROAD, AND ENTRANCE OMISSIONS CALCULATED INTO THEM

FILE NAME =	USER NAME = watersle	DESIGNED -	REVISED -	<b>STATE OF ILLINOIS DEPARTMENT OF TRANSPORTATION</b>	<b>SCHEDULES</b>	F.A.S. RTE.	SECTION	COUNTY	TOTAL SHEETS	SHEET NO.
c:\pwork\pwork\watersle\d0174276\d876d70-ahp-plan.dgn	DRAWN -	REVISED -	739			501, 502 RS-5	GREENE	19	11	
PLOT SCALE = 1/8" = 1' IN.	CHECKED -	REVISED -	CONTRACT NO. 76D70							
PLOT DATE = 3/18/2010	DATE -	REVISED -	FED. ROAD DIST. NO. 8 ILLINOIS FED. AID PROJECT							

HMA SURFACE REMOVAL-BUTT JOINT AND TEMP. RAMP SCHEDULE

MILE STATION	LOCATION DESCRIPTION	WIDTH (FT.)	HMA SURFACE REMOVAL-BUTT JOINT (SY.)	TEMPORARY RAMP (SY.)
0.0	BEGINNING OF JOB	64	0.0	35.6
0.0	75' NORTH OF BEG. OF JOB	23	0.0	12.8
1.3 RT	SIDEROAD 1300N	38	84.4	55.7
2.3 LT	SIDEROAD 2300N	56	124.4	82.1
2.6 RT	UNKNOWN SIDEROAD	54	120.0	79.2
4.1	SN. 031-0011 S. APP.	22	73.3	12.2
4.1	SN. 031-0011 N. APP.	22	73.3	12.2
4.5	SN.031-0010 S. APP.	22	73.3	12.2
4.5	SN. 031-0010 N. APP.	22	73.3	12.2
4.6 LT	UNKNOWN SIDEROAD	78	173.3	114.4
5.1 RT	ROAD TO HAYPRESS	53	117.8	77.7
5.5	SN. 031-0037 S. APP.	30	100.0	16.7
5.5	SN. 031-0037 N. APP.	27.5	91.7	15.3
5.7	SN. 031-0036 S. APP.	28	93.3	15.6
5.7	SN. 031-0036 N. APP.	28	93.3	15.6
5.8 RT	UNKNOWN SIDEROAD	58	128.9	85.1
7.3 RT	SIDEROAD 1900N	65	144.4	95.3
8.2	SN. 031-0033 S. APP.	40.5	135.0	22.5
8.2	SN. 031-0033 N. APP.	41.5	138.3	23.1
8.7 RT	SIDEROAD 2050N	45	100.0	66.0
8.7 LT	UNKNOWN SIDEROAD	35	77.8	51.3
9.8 RT	SIDEROAD 2160N	72	160.0	105.6
9.9	SN. 031-0032 S. APP.	36.5	121.7	20.3
9.9	SN. 031-0032 N. APP.	36	120.0	20.0
10.3 LT	UNKNOWN SIDEROAD	52	115.6	76.3
11.3 RT	UNKNOWN SIDEROAD	65	144.4	95.3
11.6	SN. 031-0006 S. APP.	30.5	101.7	16.9
11.6	SN. 031-0006 N. APP.	30.5	101.7	16.9
12.0 RT	SIDEROAD 2360N	110	244.4	161.3
12.5 LT	UNKNOWN SIDEROAD	54	120.0	79.2
13.8 LT	UNKNOWN SIDEROAD	40	88.9	58.7
13.9 LT	UNKNOWN SIDEROAD	46	102.2	67.5
14.0	SN. 031-0005 S. APP.	40	133.3	22.2
14.0	SN. 031-0005 N. APP.	39	130.0	21.7
15.4 RT	SIDEROAD 2675N	33	73.3	48.4
15.6	SN. 031-0003 S. APP.	24	80.0	13.3
15.6	SN. 031-0003 N. APP.	24	80.0	13.3
15.7 RT	SIDEROAD 2710N	48	106.7	70.4
15.7 RT	SIDEROAD 2710N	35	77.8	51.3
16.7	END OF JOB	24	80.0	13.3
SUBTOTAL			4197.5	1849.1
RD. TOTAL			4198	1849

NOTE: BUTT JOINTS AT SIDEROADS ARE 20' LONG AND 30' LONG AT ALL STRUCTURES AND AT THE END OF THE JOB  
 NOTE: TEMP. RAMPS AT SIDEROADS ARE 13.2' LONG AND 5' LONG AT ALL STRUCTURES AND THE BEGINNING AND END OF THE JOB

FILE NAME =	USER NAME = watersle	DESIGNED -	REVISED -	<b>STATE OF ILLINOIS DEPARTMENT OF TRANSPORTATION</b>	<b>SCHEDULES</b>	F.A.S RTE.	SECTION	COUNTY	TOTAL SHEETS	SHEET NO.	
c:\pw\work\p\idot\watersle\d0174276\d876	d70-sht-plan.dgn	DRAWN -	REVISED -			739	501, 502 RS-5	GREENE	19	12	
	PLOT SCALE = 1/8" = 1' IN.	CHECKED -	REVISED -			SCALE: _____ SHEET NO. 7 OF 8 SHEETS STA. _____ TO STA. _____		CONTRACT NO. 76D70			
	PLOT DATE = 3/18/2010	DATE -	REVISED -			FED. ROAD DIST. NO. 8 ILLINOIS FED. AID PROJECT					

INSERTION CULVERT LINER  
SCHEDULE - 18"

MILE STA.	LENGTH (FT.)
2.4	45
13.7	67
TOTAL	112

INSERTION CULVERT LINER  
SCHEDULE - 24"

MILE STA.	LENGTH (FT.)
1.0	65
1.5	52
1.6	45
1.9	49
2.0	40
2.1	45
3.3	45
3.7	53
3.7	51
6.7	51
7.1	37
7.6	55
7.9	61
7.9	61
8.3	59
8.3	59
9.3	59
10.4	68
13.5	56
16.0	77
TOTAL	1088

INSERTION CULVERT LINER  
SCHEDULE - 30"  
(TABLE 1 OF 2)

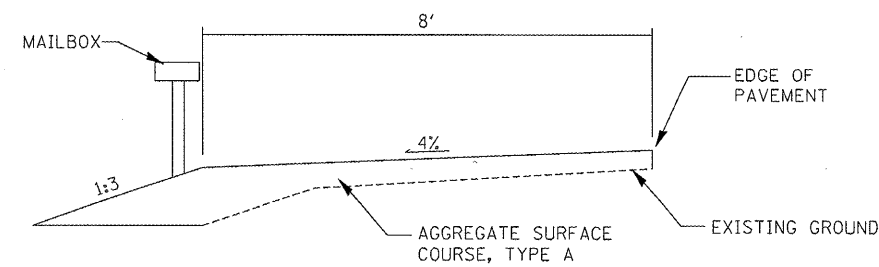
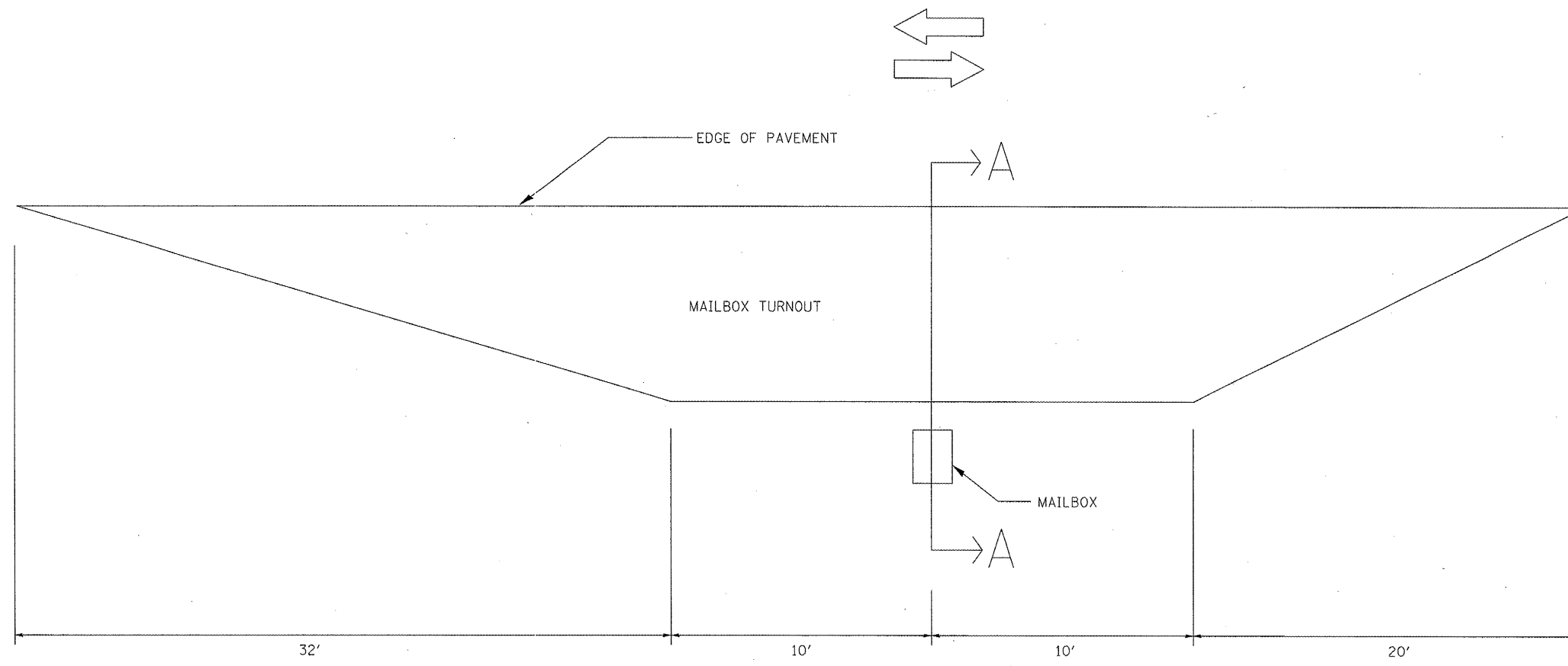
MILE STA.	LENGTH (FT.)
0.1	45
0.2	49
0.3	45
0.7	52
0.8	45
1.8	60
2.8	62
3.0	53
3.1	53
3.4	56
6.4	43
6.5	37
6.7	51
7.0	37
7.5	55
7.5	57
7.8	62
7.8	62
8.6	60
8.6	59
9.2	60
9.2	60
9.4	60
9.4	60
9.6	64
9.6	64
9.8	57
10	81
10.1	59
10.1	59
10.2	57
10.6	56
10.6	56
10.8	58
11.1	57

INSERTION CULVERT LINER  
SCHEDULE - 30"  
(TABLE 2 OF 2)

MILE STA.	LENGTH (FT.)
11.3	53
11.9	56
11.9	56
12.0	60
12.0	60
12.2	60
12.2	59
12.3	60
12.3	60
12.3	60
12.3	60
12.4	64
12.6	68
12.6	68
12.6	64
12.7	63
13.0	66
13.1	66
13.1	66
13.2	64
13.3	68
13.3	68
13.4	64
13.6	57
14.1	60
14.2	60
14.3	58
14.4	63
14.4	63
14.8	65
14.8	65
14.8	65
14.8	72
14.8	72
TOTAL	4084

INSERTION CULVERT LINER  
SCHEDULE - 36"

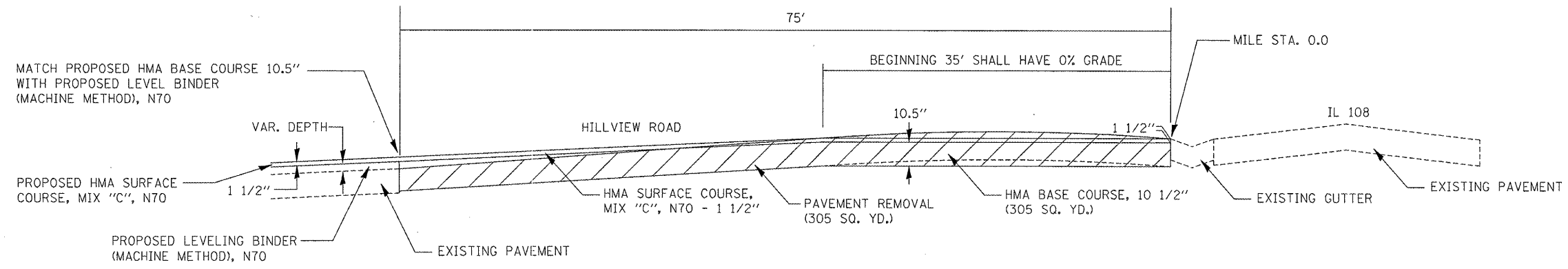
MILE STA.	LENGTH (FT.)
3.7	53
4.7	65
5.0	53
5.8	69
6.3	63
6.3	62
6.6	39
6.8	43
7.7	91
7.7	91
7.9	53
8.4	59
9.1	56
9.1	56
9.7	56
9.7	56
10.5	58
11.0	56
11.0	56
13.9	72
13.9	72
15.1	66
15.1	66
16.0	63
16.2	66
16.4	63
16.4	67
TOTAL	1670



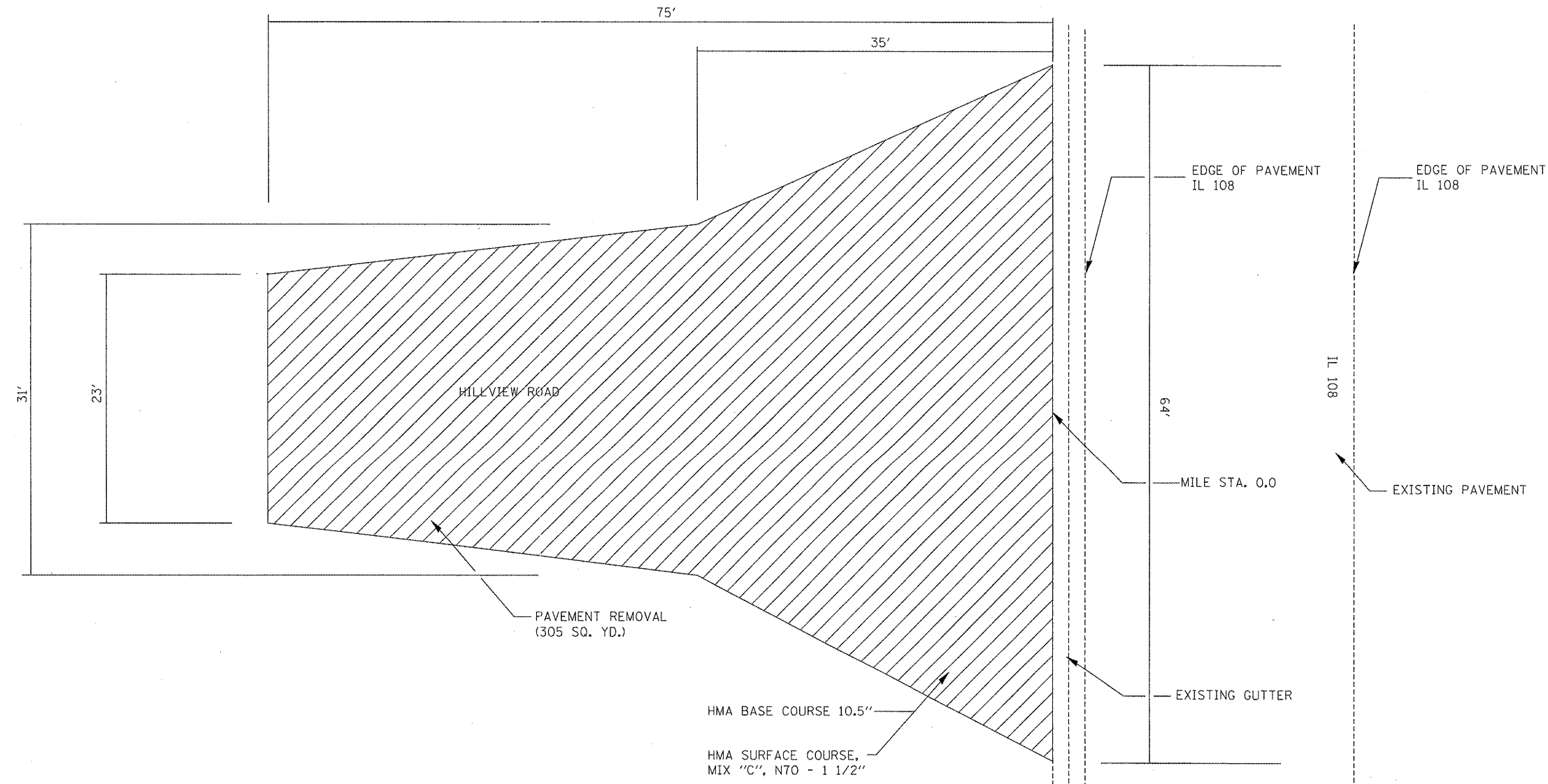
SECTION A-A  
MAILBOX TURNOUT DETAIL  
MILE STA. 6.6 LT, 6.9 LT, & 8.4 LT

NOTE: ALL MAILBOX TURNOUTS EXCEPT FOR THE ONES LOCATED AT 6.6 LT, 6.9 LT, & 8.4 LT SHALL BE BUILT ACCORDING TO HIGHWAY STANDARD 406201-01

FILE NAME =	USER NAME = wotersle	DESIGNED -	REVISED -	<b>STATE OF ILLINOIS DEPARTMENT OF TRANSPORTATION</b>	<b>MAILBOX TURNOUT DETAIL</b>	F.A.S. RTE.	SECTION	COUNTY	TOTAL SHEETS	SHEET NO.
c:\pwork\pwork\watersle\d0174276\d078470-shit-plan.dgn		DRAWN -	REVISED -			739	501, 502RS-5	GREENE	19	14
		CHECKED -	REVISED -			CONTRACT NO. 76D70				
		DATE -	REVISED -			FED. ROAD DIST. NO. 8 ILLINOIS FED. AID PROJECT				
					SCALE: _____	SHEET NO. 1 OF 1 SHEETS	STA. _____	TO STA. _____		



PAVEMENT REMOVAL AND REPLACEMENT DETAIL  
MILE STA. 0.0 (PROFILE VIEW)



PAVEMENT REMOVAL AND REPLACEMENT DETAIL  
MILE STA. 0.0 (PLAN VIEW)

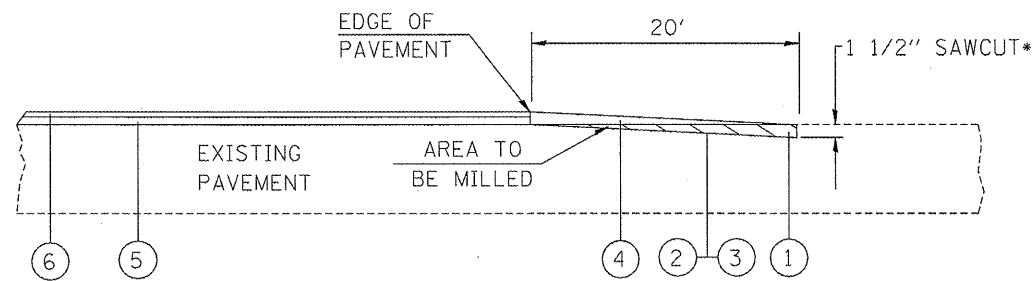
FILE NAME =	USER NAME = watersle	DESIGNED -	REVISED -
c:\pw\work\p\idat\watersle\d0174276\d87d70-sht-pln.dgn		DRAWN -	REVISED -
		CHECKED -	REVISED -
		DATE -	REVISED -

**STATE OF ILLINOIS  
DEPARTMENT OF TRANSPORTATION**

PAVEMENT REMOVAL DETAIL		
SCALE: -----	SHEET NO. 1 OF 1 SHEETS	STA. ----- TO STA. -----

F.A.S. RTE.	SECTION	COUNTY	TOTAL SHEETS	SHEET NO.
739	501, 502 RS-5	GREENE	19	15
FED. ROAD DIST. NO. 8 ILLINOIS FED. AID PROJECT			CONTRACT NO. 76D70	

OIL AND CHIP SIDEROAD BUTT JOINT DETAIL



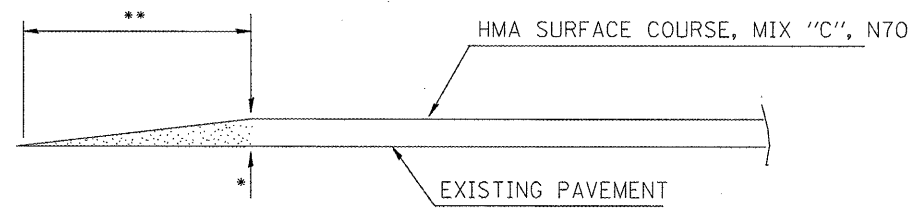
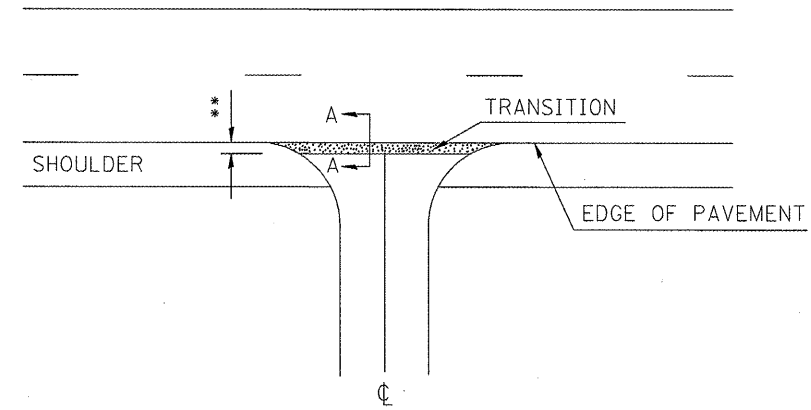
LEGEND

- ① PROPOSED HMA SURFACE REMOVAL-BUTT JOINT
- ② PROPOSED BITUMINOUS MATERIAL (PRIME COAT)
- ③ PROPOSED AGGREGATE (PRIME COAT)
- ④ PROPOSED INCIDENTAL HMA SURFACING
- ⑤ LEVELING BINDER (MACHINE METHOD), N70 - VAR. DETPH
- ⑥ HMA SURFACE COURSE, MIX "C", N70 - 1 1/2"

\* COST OF SAWCUT TO BE INCLUDED IN HMA SURFACE REMOVAL-BUTT JOINT; NO ADDITIONAL COMPENSATION WILL BE ALLOWED.

NOTE: SEE SCHEDULE FOR LOCATIONS OF ALL OIL AND CHIP ENTRANCE AND SIDEROAD LOCATIONS

CONCRETE PRIVATE ENTRANCE DETAIL



TRANSITION DETAIL  
A-A

*EOP ELEVATION CHANGE	**TOTAL TRANSITION LENGTH
3/4"	3.5'
1"	5'
1-1/2"	7.5'
2"	10'
2-1/2"	12.5'
3"	15'
3-1/2"	17.5'
4"	20'
4-1/2"	22.5'
5"	25'
5-1/2"	27.5'
6"	30'

NOTE:  
WHERE THE HMA TRANSITION IS MATCHING INTO AN EXISTING CONCRETE PRIVATE ENTRANCE, AN INCIDENTAL HMA SURFACING WEDGE SHALL BE CONSTRUCTED WITHIN THE LIMITS OF THE TOTAL TRANSITION LENGTH ON THE PRIVATE ENTRANCE.

FILE NAME =	USER NAME = watersle	DESIGNED -	REVISED -
ei\pv_work\p\dot\watersle\d0174276\d87	d70-shr-plan.dgn	DRAWN -	REVISED -
	PLOT SCALE = 1/8" = 1' IN.	CHECKED -	REVISED -
	PLOT DATE = 3/18/2010	DATE -	REVISED -

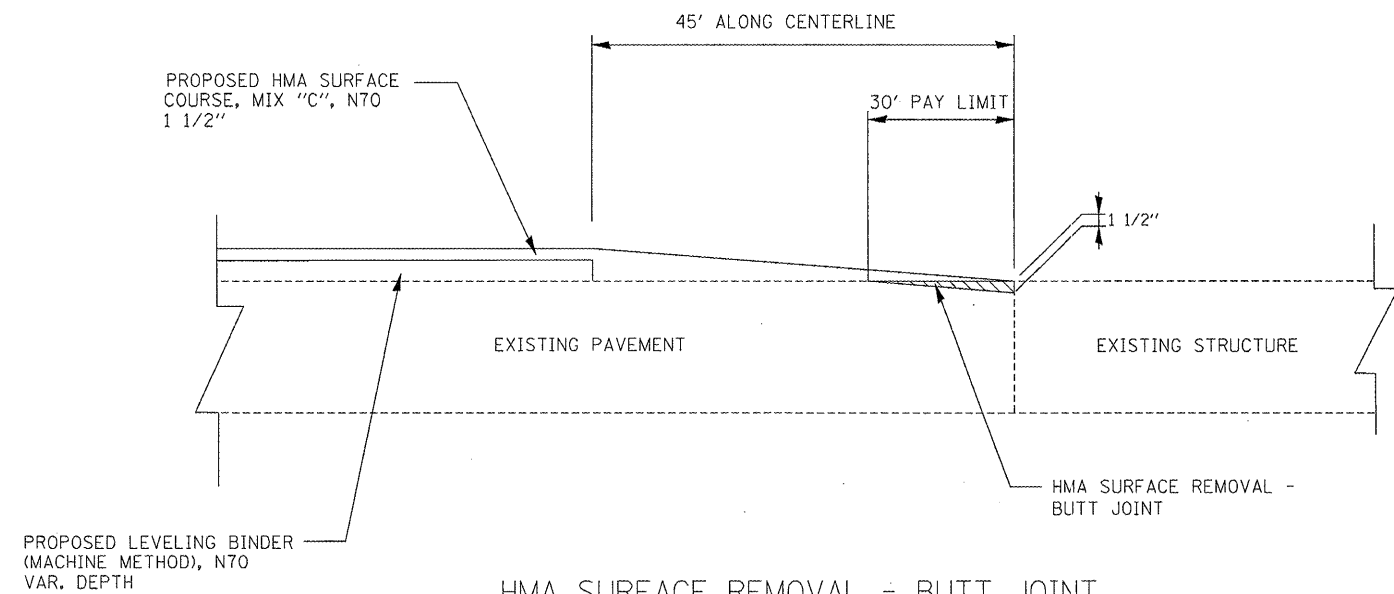
STATE OF ILLINOIS  
DEPARTMENT OF TRANSPORTATION

ENTRANCE AND SIDEROAD DETAILS

SCALE: SHEET NO. 1 OF 1 SHEETS STA. TO STA.

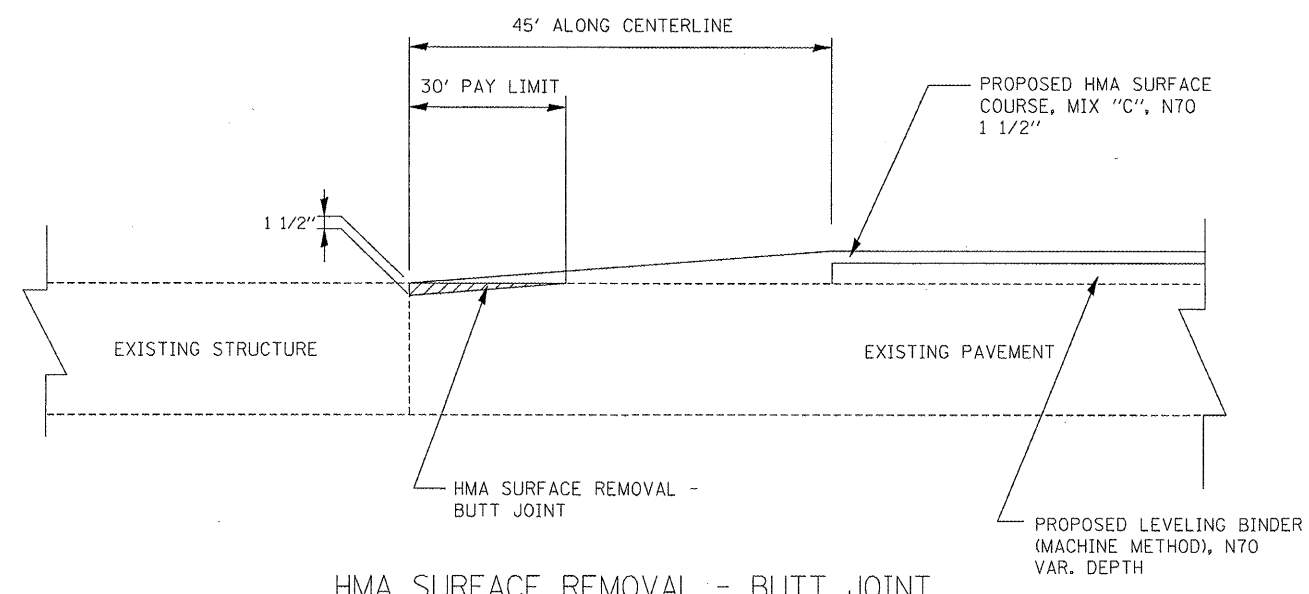
F.A.S. RTE.	SECTION	COUNTY	TOTAL SHEETS	SHEET NO.
739	501, 502 RS-5	GREENE	19	16
FED. ROAD DIST. NO. 8 ILLINOIS FED. AID PROJECT			CONTRACT NO. 76D70	





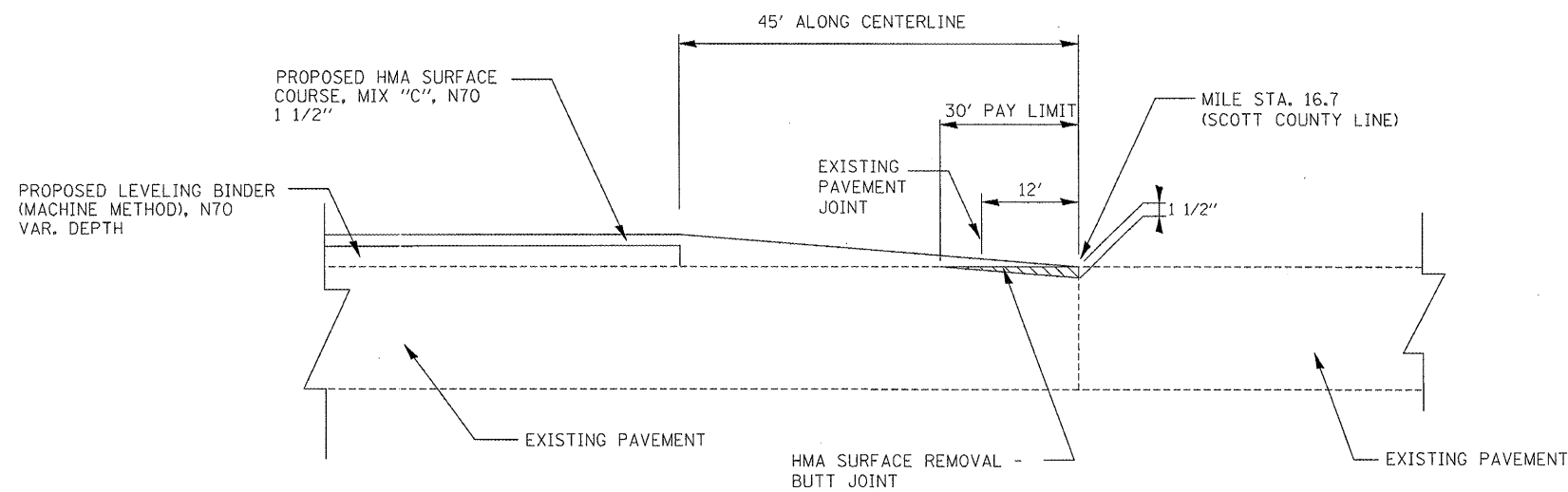
**HMA SURFACE REMOVAL - BUTT JOINT**

- SN. 031-0011 NORTH SIDE
- SN. 031-0010 NORTH SIDE
- SN. 031-0037 N. APP.
- SN. 031-0036 N. APP.
- SN. 031-0033 NORTH SIDE
- SN. 031-0032 NORTH SIDE
- SN. 031-0006 N. APP.
- SN. 031-0005 N. APP.
- SN. 031-0003 N. APP.



**HMA SURFACE REMOVAL - BUTT JOINT**

- SN. 031-0011 SOUTH SIDE
- SN. 031-0010 SOUTH SIDE
- SN. 031-0037 S. APP.
- SN. 031-0036 S. APP.
- SN. 031-0033 SOUTH SIDE
- SN. 031-0032 SOUTH SIDE
- SN. 031-0006 S. APP.
- SN. 031-0005 S. APP.
- SN. 031-0003 S. APP.



**HMA SURFACE REMOVAL - BUTT JOINT**

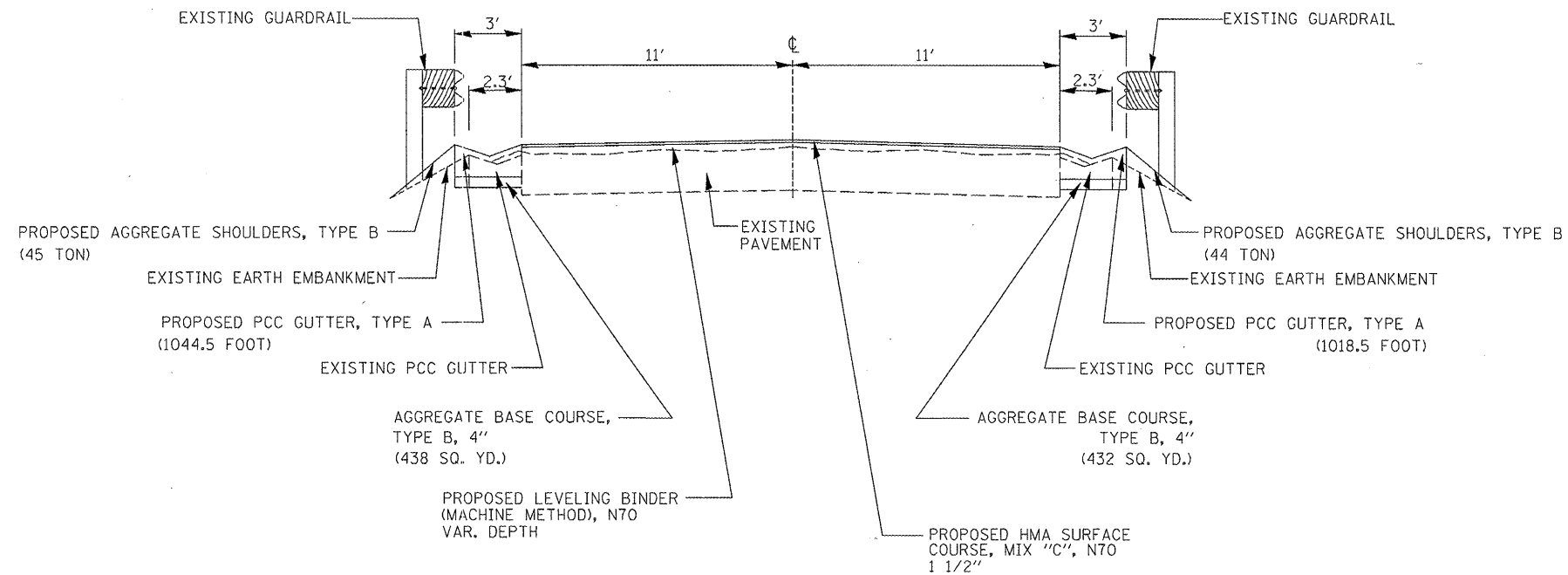
MILE STA. 16.7 (SCOTT COUNTY LINE)

FILE NAME =	USER NAME = watersle	DESIGNED -	REVISED -
c:\pwwork\pwwork\watersle\d0174276\d876d70-sht-plan.dgn		DRAWN -	REVISED -
		CHECKED -	REVISED -
		DATE -	REVISED -

**STATE OF ILLINOIS  
DEPARTMENT OF TRANSPORTATION**

<b>BUTT JOINT DETAILS</b>	
SCALE: _____	SHEET NO. 1 OF 1 SHEETS
STA. _____	TO STA. _____

F.A.S. RTE.	SECTION	COUNTY	TOTAL SHEETS	SHEET NO.
739	501, 502 RS-5	GREENE	19	17
FED. ROAD DIST. NO. 8 ILLINOIS FED. AID PROJECT			CONTRACT NO. 76D70	

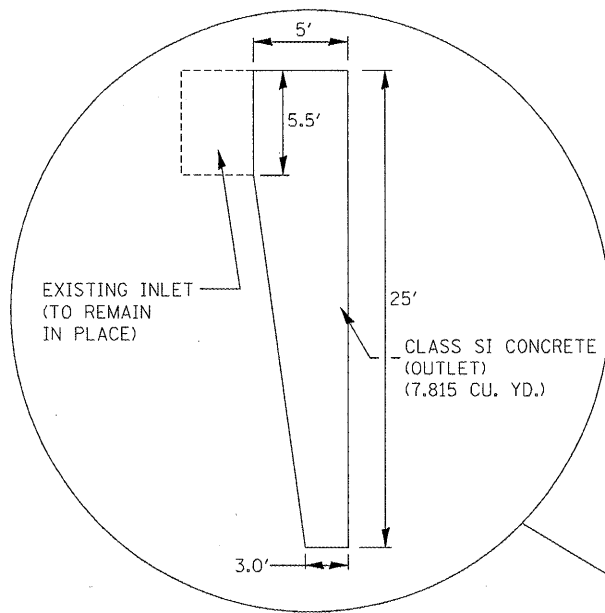


**GUTTER REPLACEMENT DETAIL**  
 MILE STA. 11.5-11.8 LT. & RT. (GUTTER NORTH AND SOUTH OF HILLVIEW BRIDGE)

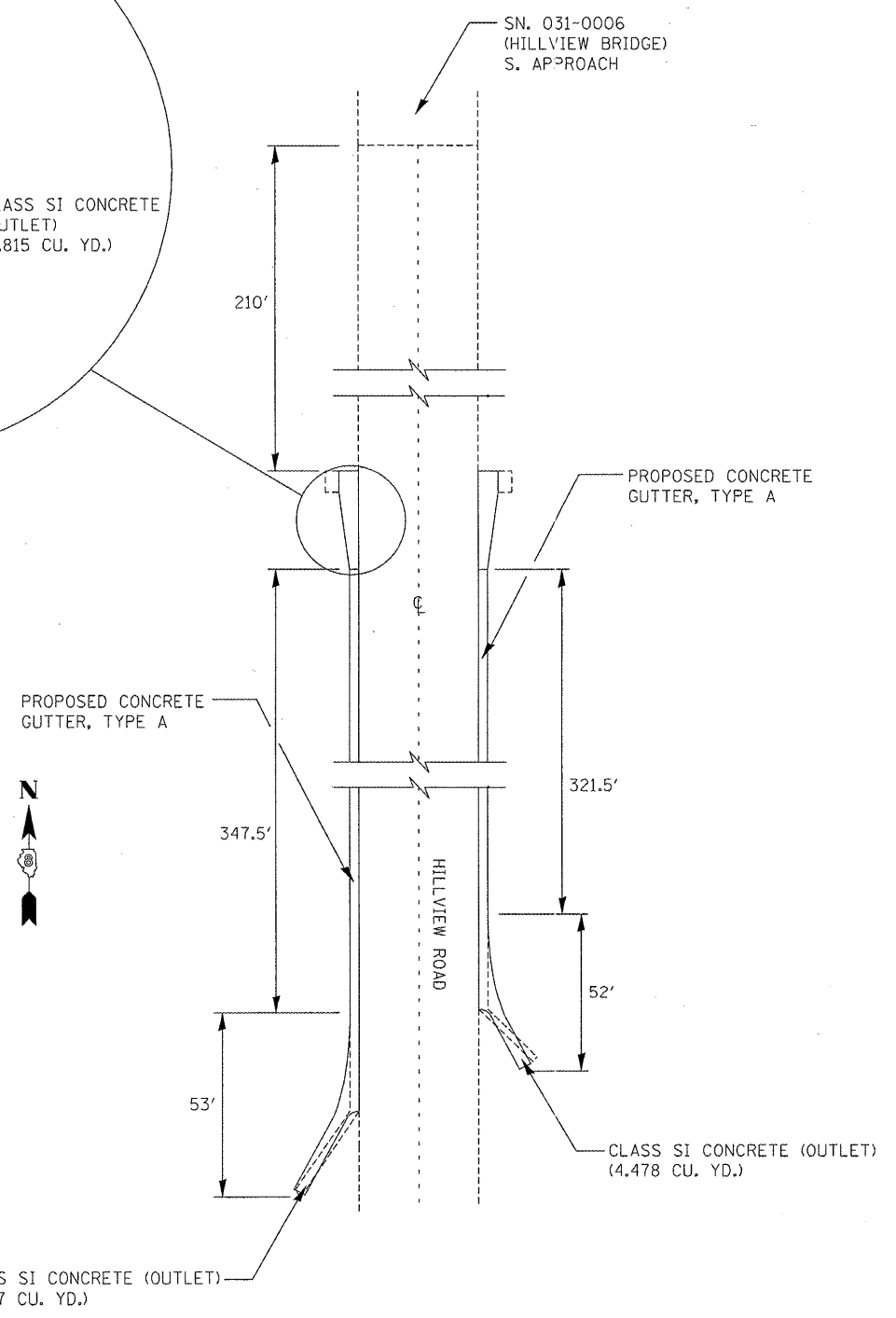
NOTE: AGGREGATE BASE COURSE, TYPE A 4" SHALL BE USED UNDER PROPOSED CONCRETE GUTTER, TYPE A AND CLASS SI CONCRETE INLETS AND OUTLETS. THE QUANTITY CALLED OUT IN THE ABOVE DETAIL REFLECTS SUCH.

NOTE: LENGTH OF GUTTER REMOVAL IS 2511 FOOT.

FILE NAME =	USER NAME = watorsle	DESIGNED -	REVISED -	<b>STATE OF ILLINOIS DEPARTMENT OF TRANSPORTATION</b>	<b>CONCRETE GUTTER, TYPE A DETAIL</b>	F.A.S. RTE.	SECTION	COUNTY	TOTAL SHEETS	SHEET NO.	
ca:\pwork\pwork\watorsle\d8174278\d878d78-sht-plen.dgn	DRAWN -	REVISED -	739			501, 502 RS-5	GREENE	19	18		
PLOT SCALE = 1/8" = 1' / IN.	CHECKED -	REVISED -	CONTRACT NO. 76D70								
PLOT DATE = 3/18/2010	DATE -	REVISED -	FED. ROAD DIST. NO. 8 ILLINOIS FED. AID PROJECT								
						SCALE: _____	SHEET NO. 1 OF 1 SHEETS	STA. _____ TO STA. _____			

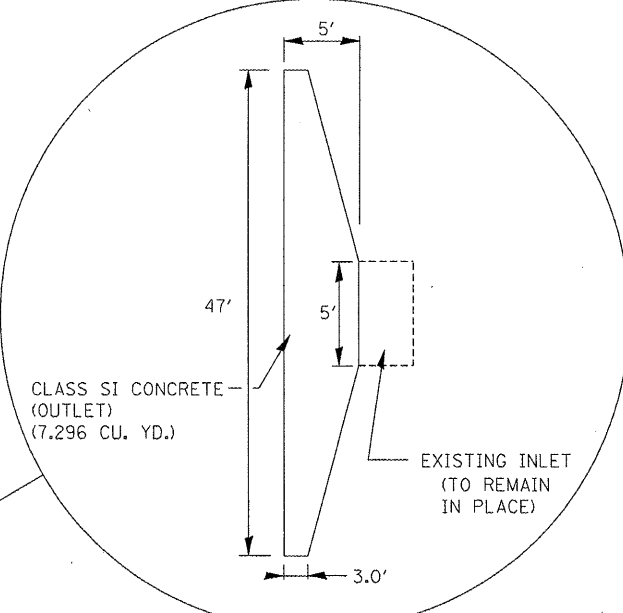
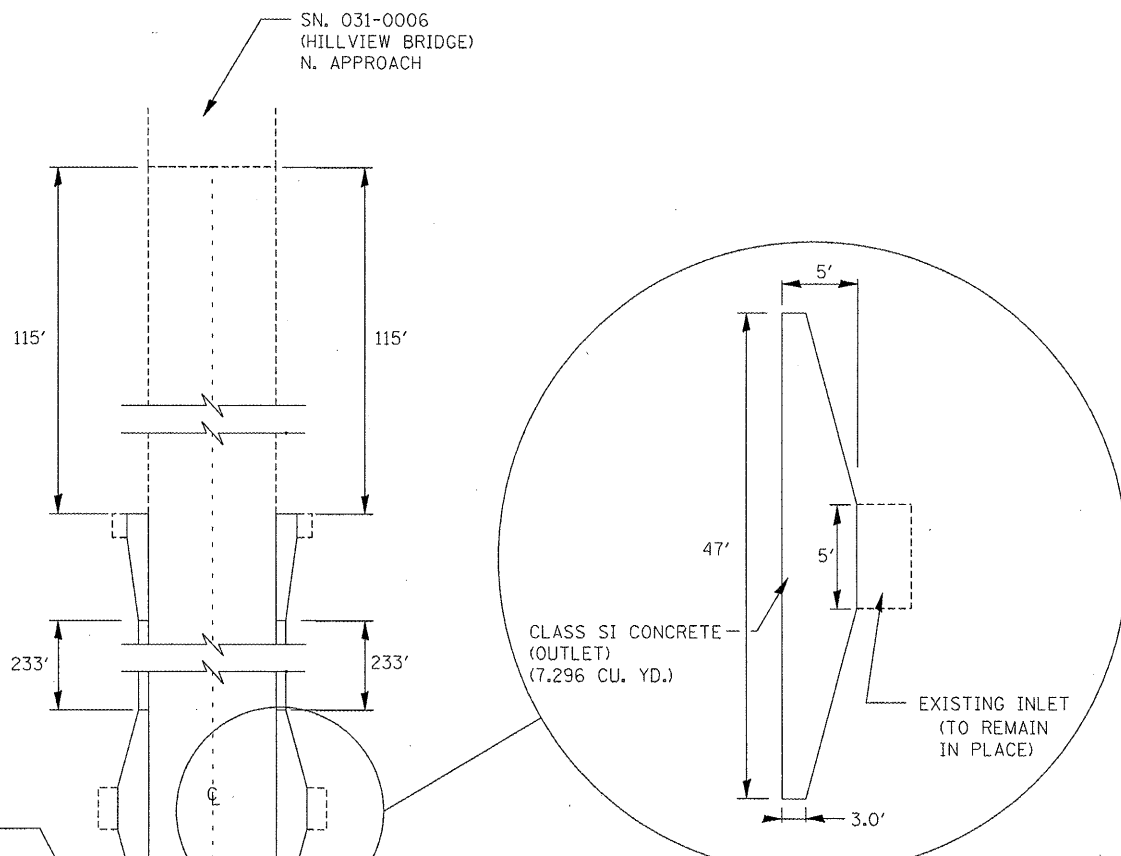


TYPICAL BOTH SIDES



CONCRETE GUTTER, TYPE A AND CLASS SI  
CONCRETE INLET AND OUTLET DETAIL

SOUTH OF SN. 031-0006



TYPICAL BOTH SIDES

CONCRETE GUTTER, TYPE A AND CLASS SI  
CONCRETE INLET AND OUTLET DETAIL

NORTH OF SN. 031-0006

NOTE: ALL EXISTING INLETS SHALL REMAIN IN PLACE. ALL PROPOSED INLETS TO BE CONSTRUCTED WITH CLASS SI CONCRETE (OUTLET) SHALL BE FEATHERED DOWN TO THE EXISTING INLETS SO AS NOT TO IMPEDE THE FLOW OF WATER.

NOTE: LENGTH OF GUTTER REMOVAL IS 2511 FOOT.

NOT TO SCALE

FILE NAME =	USER NAME = watersle	DESIGNED -	REVISED -
ca:\pwork\pwork\watersle\d0174276\d87670-aht-plan.dgn		DRAWN -	REVISED -
		CHECKED -	REVISED -
		DATE -	REVISED -

**STATE OF ILLINOIS  
DEPARTMENT OF TRANSPORTATION**

<b>CONCRETE GUTTER, TYPE A DETAIL</b>	
SCALE: _____	SHEET NO. 1 OF 1 SHEETS
STA. _____	TO STA. _____

F.A.S. RTE.	SECTION	COUNTY	TOTAL SHEETS	SHEET NO.
739	501, 502 RS-5	GREENE	19	19
			CONTRACT NO. 76D70	
FED. ROAD DIST. NO. 8 ILLINOIS FED. AID PROJECT				