

STATE OF ILLINOIS
DEPARTMENT OF TRANSPORTATION
DIVISION OF HIGHWAYS

**PROPOSED
HIGHWAY PLANS**

F.A.P. ROUTE 317 (US ROUTE 24)
SECTION 16W-2,RS-4;17W-1,RS-3
PROJECT
FULTON COUNTY
C-94-340-95

F.A.P. RTE.	SECTION	COUNTY	TOTAL SHEETS	SHEET NO.
317	16W-2,RS-4;17W-1,RS-3	FULTON	240	1
FED. ROAD DIST. NO. 4		ILLINOIS	CONTRACT NO. 88703	

D-94-060-95



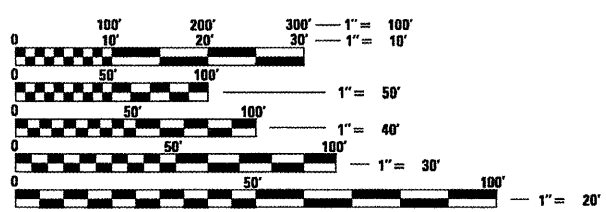
DESCRIPTION OF WORK :
THE PROPOSED IMPROVEMENT CONSISTS OF COLD-IN-PLACE RECYCLING OF BITUMINOUS MATERIALS, PAVEMENT PATCHING, WIDENING, AND RESURFACING. ALSO INCLUDED ARE DITCH REGRADING AND MISCELLANEOUS CULVERT REPAIRS, EXTENSIONS, AND REPLACEMENTS.

FOR INDEX OF SHEETS, SEE SHEET NO. 2

QC / QA CONCRETE
N P D E S REQUIRED

ADT = 2600 (2007)
% SU = 6%
% MU = 11%

DESIGN DESIGNATION
CLASS II TRUCK ROUTE
FUNCTIONAL CLASSIFICATION
OTHER PRINCIPAL ARTERIAL

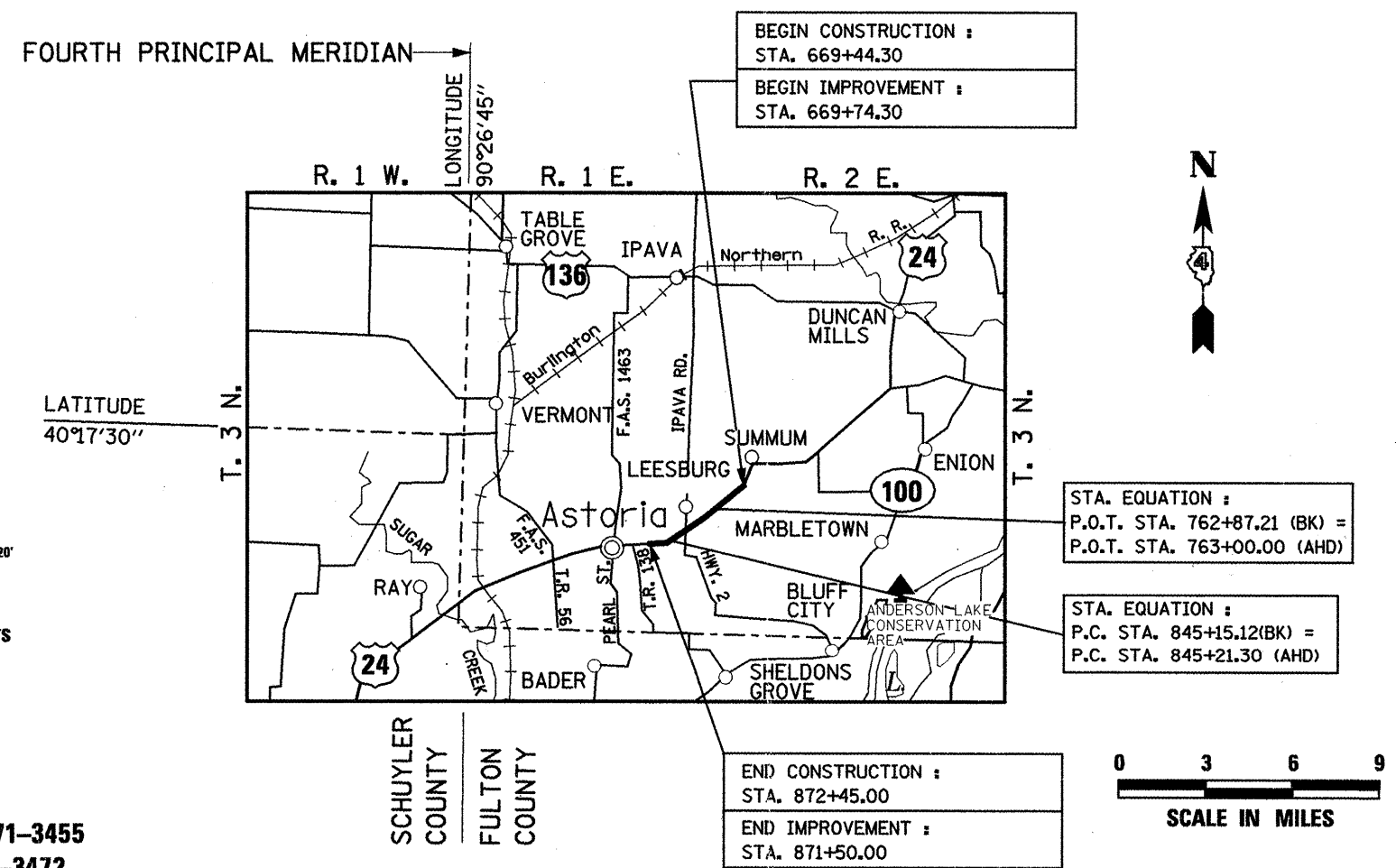


FULL SIZE PLANS HAVE BEEN PREPARED USING STANDARD ENGINEERING SCALES. REDUCED SIZED PLANS WILL NOT CONFORM TO STANDARD SCALES. IN MAKING MEASUREMENTS ON REDUCED PLANS, THE ABOVE SCALES MAY BE USED.

J.U.L.I.E.
JOINT UTILITY LOCATION INFORMATION FOR EXCAVATION
1-800-892-0123
OR 811

PROJECT ENGINEER: RICH DOTSON (309) 671-3455
DESIGN ENGINEER: KEVIN HORST (309) 671-3472

SURVEY BOOK NO'S. 2893
CATALOG NO. - 030101 - 02D
CONTRACT NO. 88703



GROSS LENGTH OF IMPROVEMENT = 20281.73 FEET = 3.841 MILES
NET LENGTH OF IMPROVEMENT = 20156.73 FEET = 3.818 MILES

STATE OF ILLINOIS
DEPARTMENT OF TRANSPORTATION
DIVISION OF HIGHWAYS

SUBMITTED *March 26 2010*

APR 9 2010
Scott E. Stitt, P.E.
ENGINEER OF DESIGN AND ENVIRONMENT

APR 9 2010
Christine M. Reed
DIRECTOR OF HIGHWAYS, CHIEF ENGINEER

PRINTED BY THE AUTHORITY
OF THE STATE OF ILLINOIS