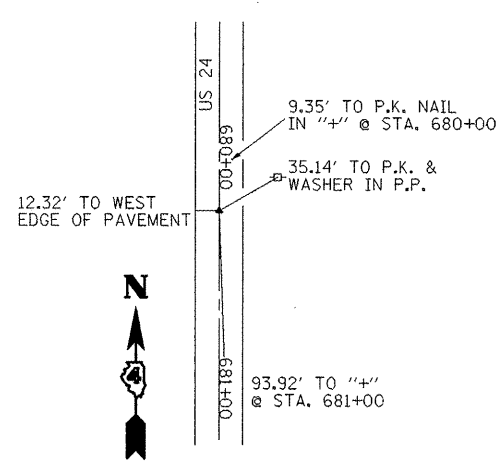
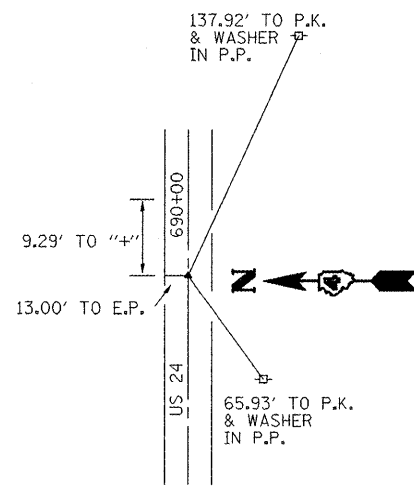


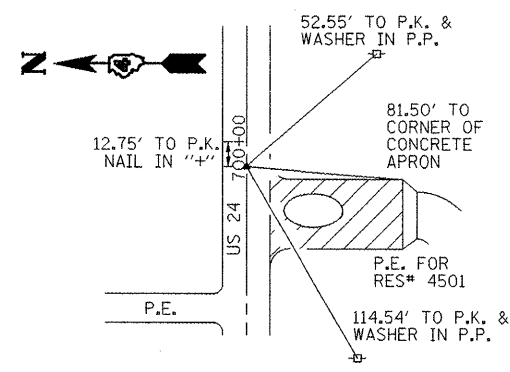
P.T. STA. 669+74.30



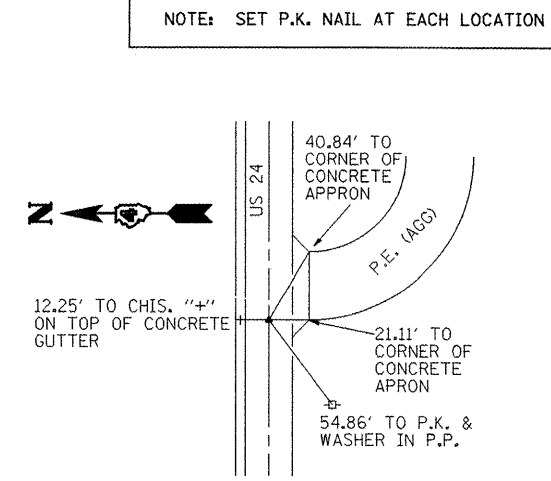
P.O.T. STA. 679+99.91



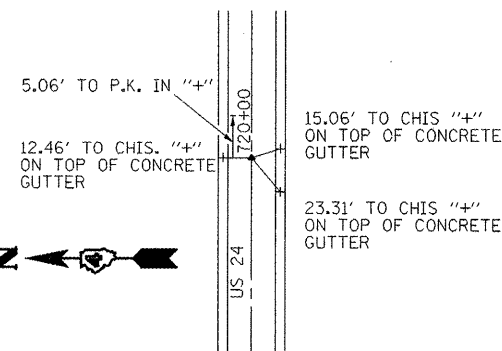
P.O.T. STA. 690+00.00



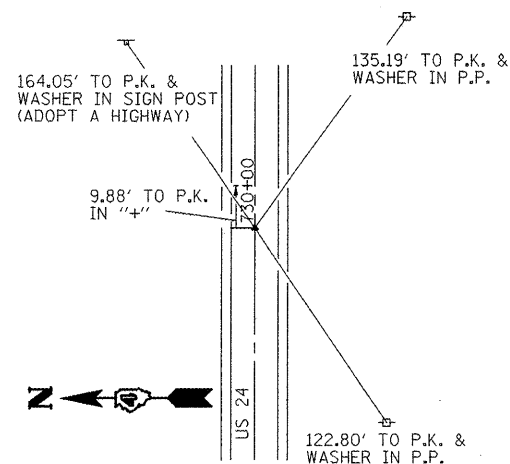
P.O.T. STA. 700+00.00



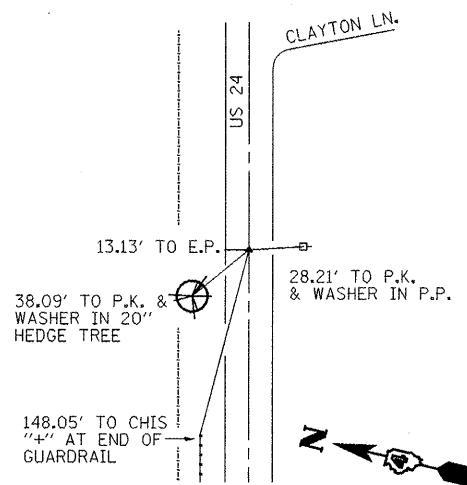
P.O.T. STA. 710+00.00



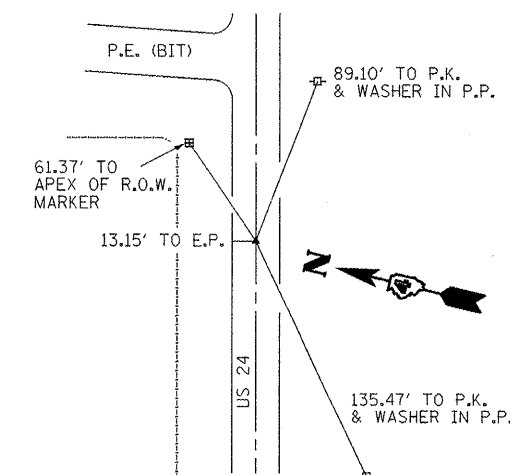
P.O.T. STA. 720+00.00



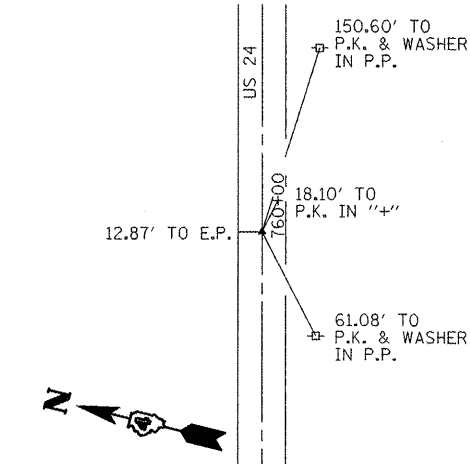
P.O.T. STA. 730+00.00



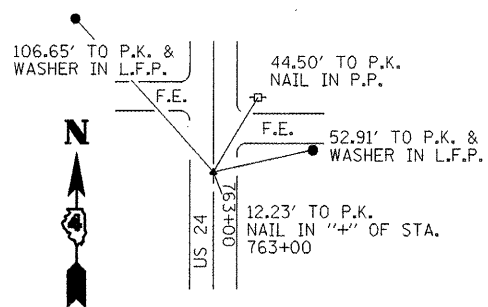
P.O.T. STA. 740+00.00



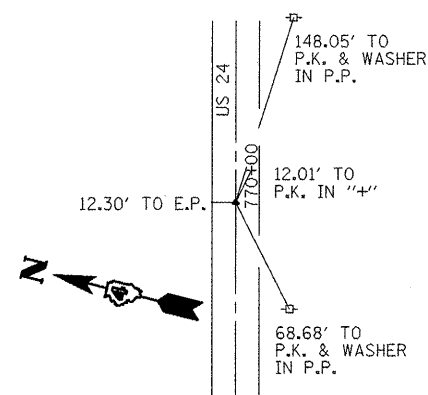
P.O.T. STA. 750+00.00



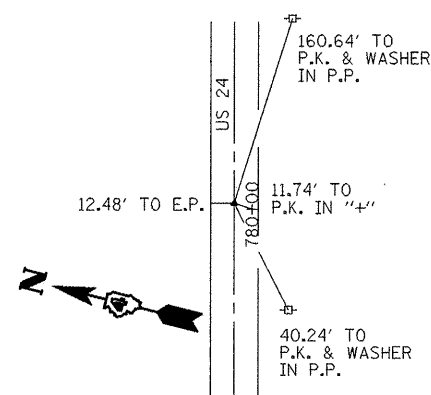
P.O.T. STA. 760+00.00



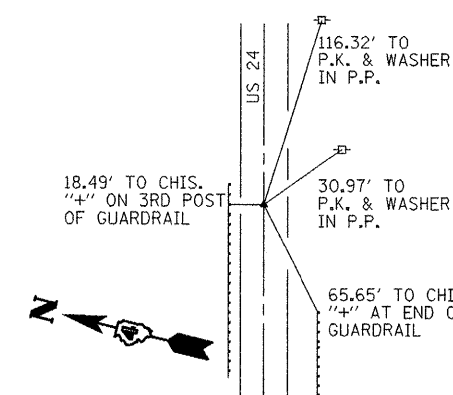
P.O.T. STA. 762+87.21 (BK) =
STA. 763+00.00 (AH)



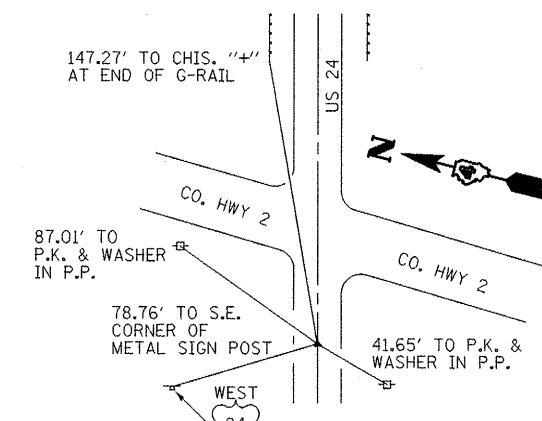
P.O.T. STA. 770+00.00



P.O.T. STA. 780+00.00



P.O.T. STA. 790+00.00



P.O.T. STA. 800+00.00

FILE NAME = miscellaneous_sheets.dgn	USER NAME = jochums.jg	DESIGNED -	REVISED -
		DRAWN - JGJ	REVISED -
		CHECKED - KGH	REVISED -
		DATE - 08/18/08	REVISED -

STATE OF ILLINOIS
DEPARTMENT OF TRANSPORTATION

ALIGNMENT SURVEY TIES & BENCHMARKS

SCALE: SHEET NO. OF SHEETS STA. TO STA.

F.A.P. RTE.	SECTION	COUNTY	TOTAL SHEETS	SHEET NO.
317	16W-2,RS-4,1TW-1,RS-3	FULTON	240	34
FED. ROAD DIST. NO. ILLINOIS FED. AID PROJECT			CONTRACT NO. 88703	