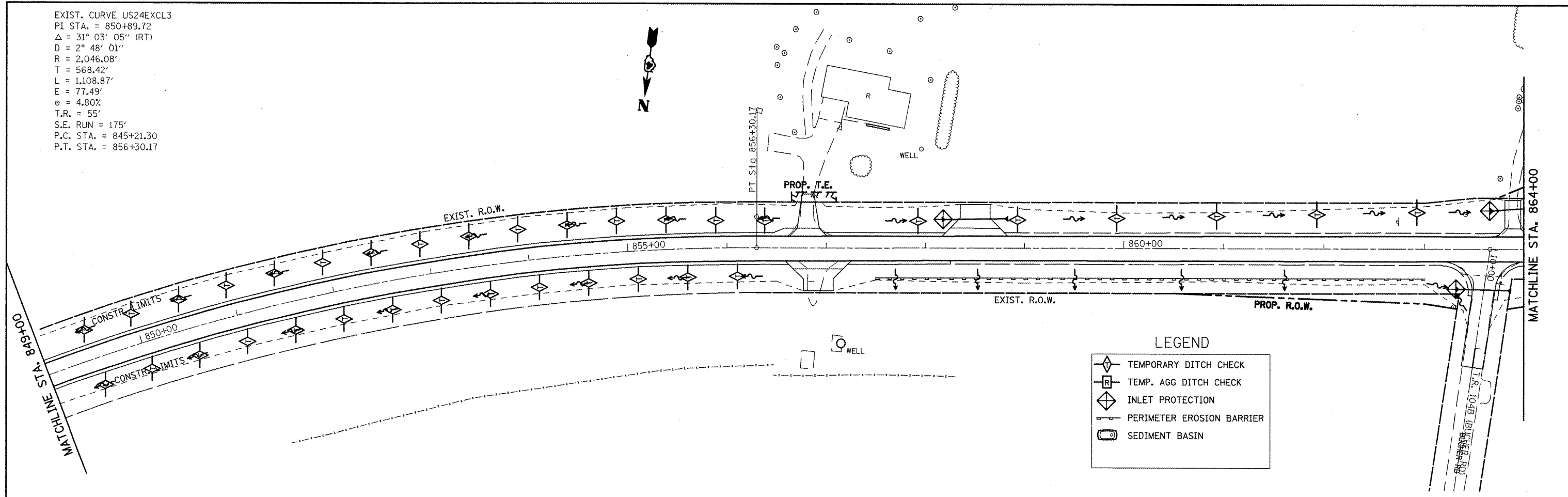
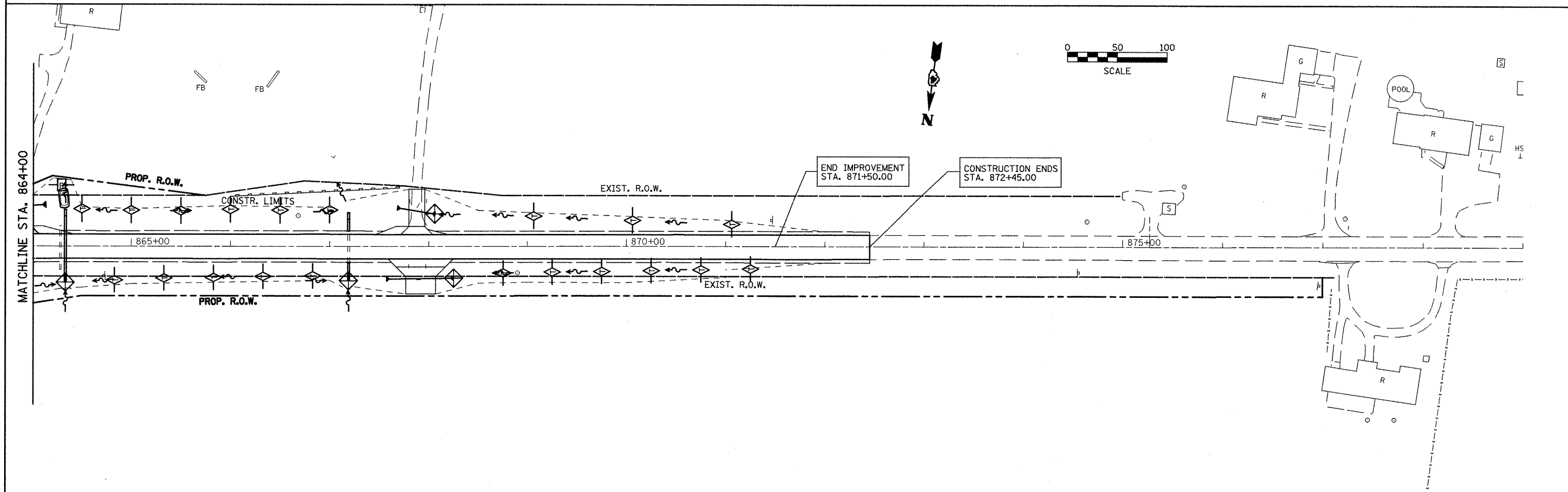


EXIST. CURVE US24EXCL3
 PI STA. = 850+89.72
 $\Delta = 31^\circ 03' 05''$ (RT)
 $D = 2^\circ 48' 01''$
 $R = 2,046.08'$
 $T = 568.42'$
 $L = 1,108.87'$
 $E = 77.49'$
 $e = 4.80\%$
 $T.R. = 55'$
 $S.E. RUN = 175'$
 $P.C. STA. = 845+21.30$
 $P.T. STA. = 856+30.17$



LEGEND

- TEMPORARY DITCH CHECK
- TEMP. AGG DITCH CHECK
- INLET PROTECTION
- PERIMETER EROSION BARRIER
- SEDIMENT BASIN



FILE NAME =
 eroscontrol.dgn

USER NAME = jochumejg
 PLOT SCALE = 1/8" = 100.0000' / IN.
 PLOT DATE = 3/12/2010

DESIGNED - KJH	REVISED -
DRAWN - JGJ	REVISED -
CHECKED - KJH	REVISED -
DATE -	REVISED -

**STATE OF ILLINOIS
 DEPARTMENT OF TRANSPORTATION**

EROSION & SEDIMENT CONTROL

SCALE: SHEET NO. 7 OF 7 SHEETS STA. 849+00 TO STA. 871+90.00

F.A.P. RTE.	SECTION	COUNTY	TOTAL SHEETS	SHEET NO.
317	16W-2,RS-4;17W-1,RS-3	FULTON	240	67
FED. ROAD DIST. NO. [ILLINOIS] FED. AID PROJECT				

CONTRACT NO. 88703