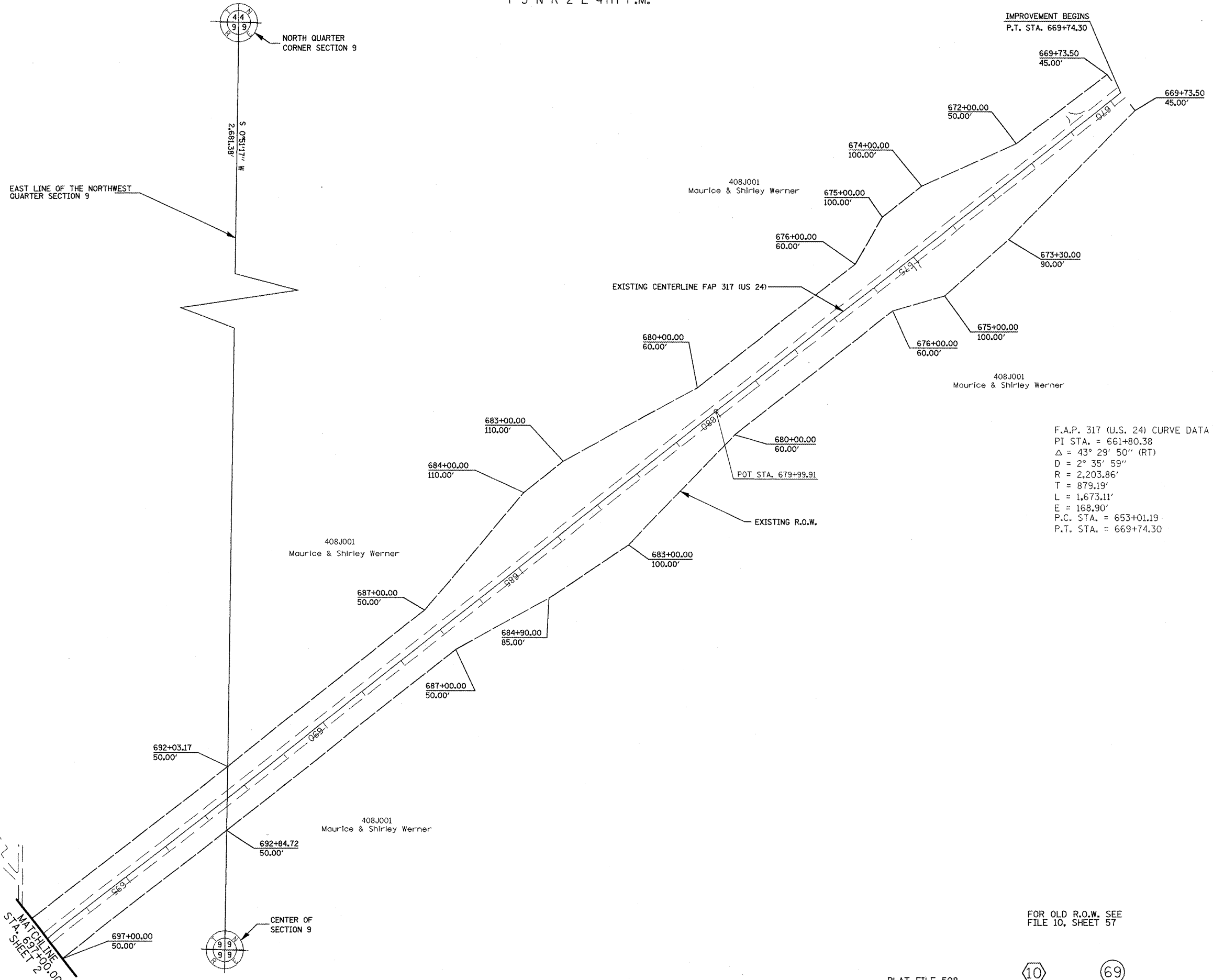


T 3 N R 2 E 4th P.M.

SECTION CORNER COORDINATES		
CORNER	NORTH	EAST
NORTH QUARTER CORNER SECTION 9	1,309,010.605	2,262,991.174
CENTER OF SECTION 9	1,306,329.524	2,262,951.179

LEGEND

PROPOSED R.O.W.	-----
PROPOSED TEMPORARY EASEMENT	
EXISTING R.O.W.	-----



F.A.P. 317 (U.S. 24) CURVE DATA  
 PI STA. = 661+80.38  
 $\Delta = 43^\circ 29' 50''$  (RT)  
 $D = 2^\circ 35' 59''$   
 $R = 2,203.86'$   
 $T = 879.19'$   
 $L = 1,673.11'$   
 $E = 168.90'$   
 P.C. STA. = 653+01.19  
 P.T. STA. = 669+74.30

FOR OLD R.O.W. SEE FILE 10, SHEET 57

PLAT FILE 508



FILE NAME: jobrow.gpk us24_astor10_summom.m32	USER NAME: ROBERT STICKELMAIER	DESIGNED: PCF	REVISED: -
		DRAWN: RTS	REVISED: -
		CHECKED: PCF	REVISED: -
		DATE: 04-09-2009	REVISED: -

**STATE OF ILLINOIS**  
**DEPARTMENT OF TRANSPORTATION**

RIGHT OF WAY PLANS	
PROJECT 24_88703	JOB NO. R-94-008-93
SHEET NO. 1 OF 7 SHEETS	STA. 669+74.30 TO STA. 697+00.00

F.A. RTE. 317	SECTION (15,16,17)RS-1,(15BR)3(15YB)1	COUNTY FULTON	TOTAL SHEETS 240	SHEET NO. 82
SCALE: 1"=100'		FED. ROAD DIST. NO. ILLINOIS	FED. AID PROJECT CONTRACT NO. 88703	