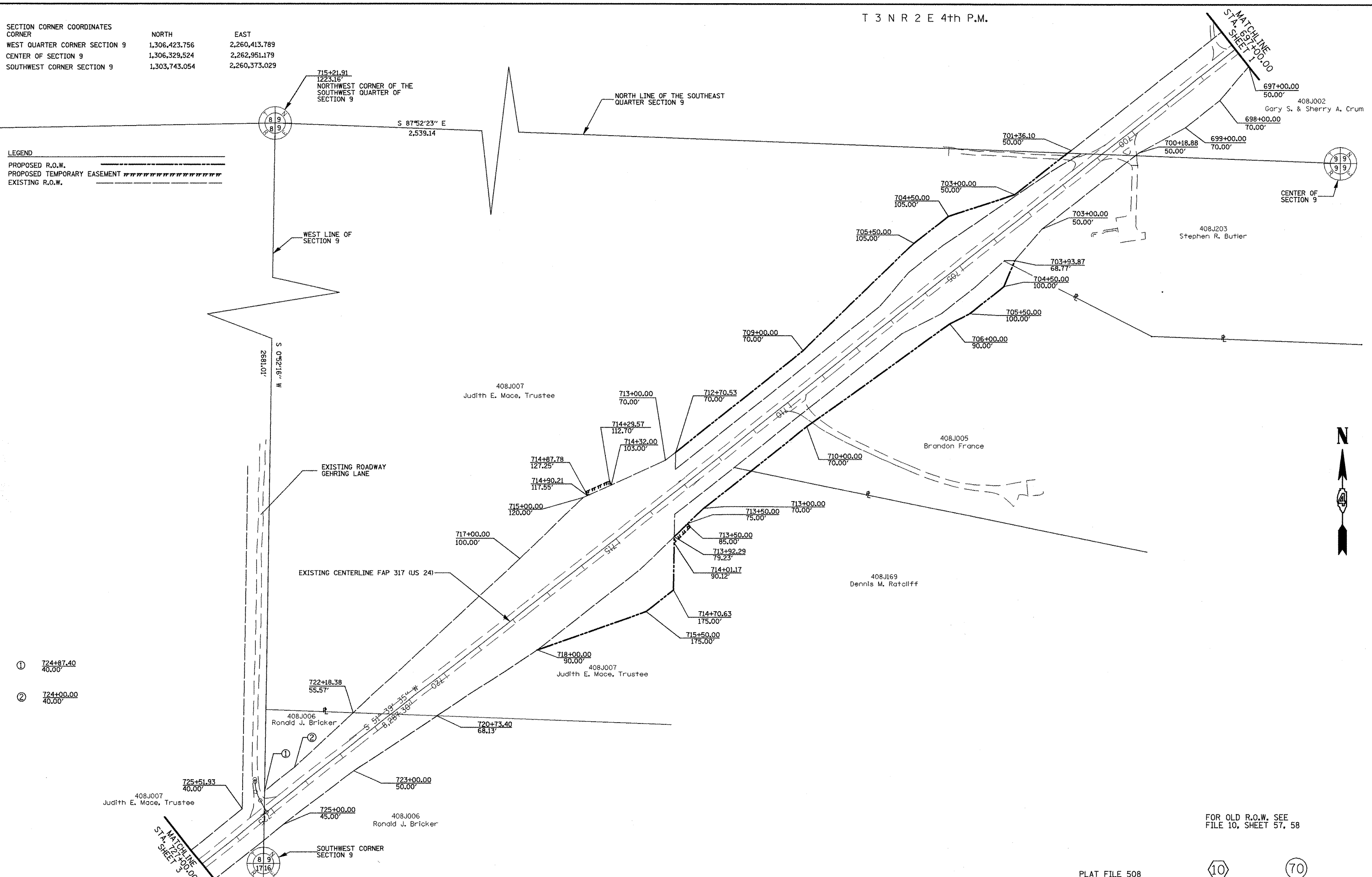


T 3 N R 2 E 4th P.M.

SECTION CORNER COORDINATES	NORTH	EAST
CORNER		
WEST QUARTER CORNER SECTION 9	1,306,423.756	2,260,413.789
CENTER OF SECTION 9	1,306,329,524	2,262,951.179
SOUTHWEST CORNER SECTION 9	1,303,743.054	2,260,373.029

LEGEND
 PROPOSED R.O.W.
 PROPOSED TEMPORARY EASEMENT
 EXISTING R.O.W.



- ① 724+87.40
40.00'
- ② 724+00.00
40.00'

FOR OLD R.O.W. SEE
FILE 10, SHEET 57, 58

PLAT FILE 508

10 70

FILE NAME
jobrow.gpk
us24a.ktl
us24_astoria_summom.m32

USER NAME = ROBERT STICKELMAIER	DESIGNED - PCF	REVISED -
PLOT SCALE = 1"=100'	DRAWN - RTS	REVISED -
PLOT DATE = 04-09-2009	CHECKED - PCF	REVISED -
	DATE - 04-09-2009	REVISED -

**STATE OF ILLINOIS
DEPARTMENT OF TRANSPORTATION**

RIGHT OF WAY PLANS	
PROJECT 24_88703	JOB NO. R-94-008-93
SCALE: 1"=100'	SHEET NO. 2 OF 7 SHEETS
STA. 697+00.00 TO STA. 725+00.00	

F.A. RTE.	SECTION	COUNTY	TOTAL SHEETS	SHEET NO.
317	(15,16,17)RS-1,(15BR)3(15YB)1	FULTON	240	83
CONTRACT NO. 88703				
FED. ROAD DIST. NO. ILLINOIS FED. AID PROJECT				