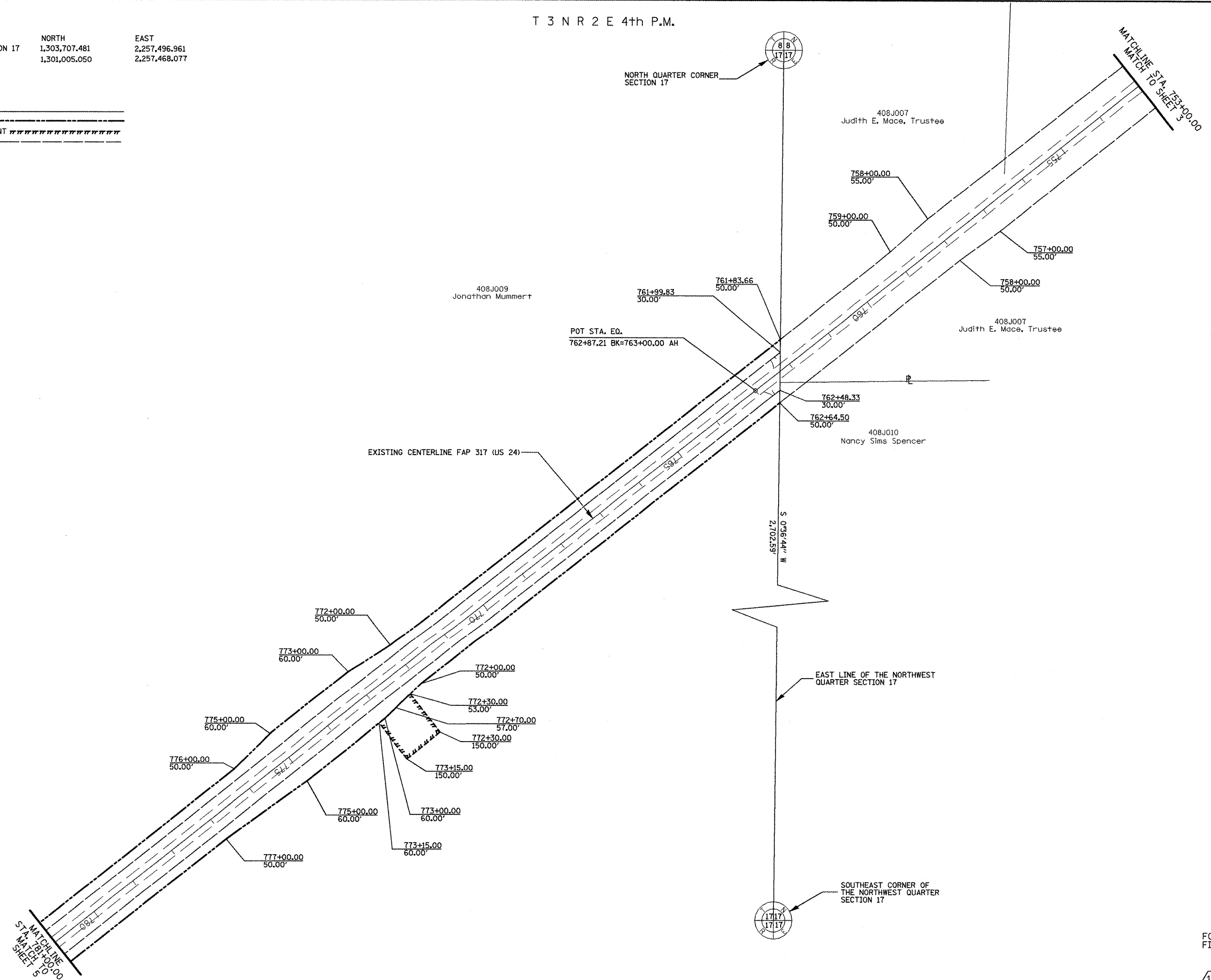


T 3 N R 2 E 4th P.M.

SECTION CORNER COORDINATES
 CORNER NORTH EAST
 NORTH QUARTER CORNER SECTION 17 1,303,707.481 2,257,496.961
 CENTER OF SECTION 17 1,301,005.050 2,257,468.077

LEGEND
 PROPOSED R.O.W.
 PROPOSED TEMPORARY EASEMENT
 EXISTING R.O.W.



FOR OLD R.O.W. SEE
 FILE 10, SHEET 58, 59

PLAT FILE 508

10

72

FILE NAME jobrow.gpk us24a.tkl us24_astorio_summom.m32	USER NAME = ROBERT STICKELMAIER	DESIGNED - PCF	REVISED -
		DRAWN - RTS	REVISED -
		CHECKED - PCF	REVISED -
		DATE - 04-09-2009	REVISED -

**STATE OF ILLINOIS
 DEPARTMENT OF TRANSPORTATION**

RIGHT OF WAY PLANS	
PROJECT 24-88703	JOB NO. R-94-008-93
SCALE: 1"=100'	SHEET NO. 4 OF 7 SHEETS
STA. 752+00.00 TO STA. 780+00.00	

F.A. RTE.	SECTION	COUNTY	TOTAL SHEETS	SHEET NO.
317	(15,16,17)RS-L,(15BR)3(15YB)1	FULTON	240	85
CONTRACT NO. 88703				
FED. ROAD DIST. NO. ILLINOIS FED. AID PROJECT				