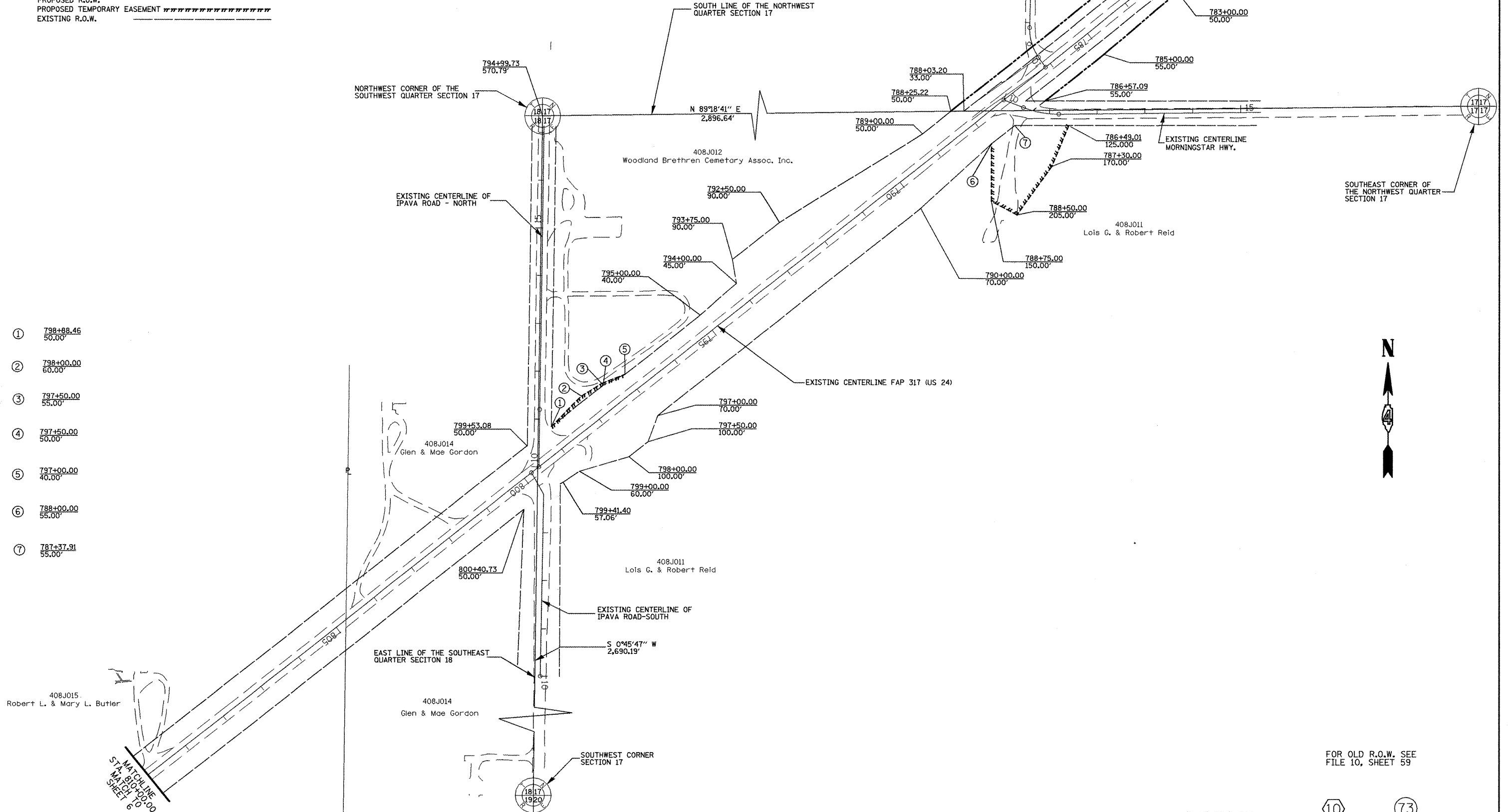


SECTION CORNER COORDINATES	NORTH	EAST
CORNER		
WEST QUARTER CORNER SECTION 17	1,300,970.240	2,254,571.649
CENTER OF SECTION 17	1,301,005.050	2,257,468.077
SOUTHWEST CORNER SECTION 17	1,298,280.289	2,254,535.827

**LEGEND**  
 PROPOSED R.O.W. \_\_\_\_\_  
 PROPOSED TEMPORARY EASEMENT -----  
 EXISTING R.O.W. -----

T 3 N R 2 E 4th P.M.



- ① 798+88.46  
50.00'
- ② 798+00.00  
60.00'
- ③ 797+50.00  
55.00'
- ④ 797+50.00  
50.00'
- ⑤ 797+00.00  
40.00'
- ⑥ 788+00.00  
55.00'
- ⑦ 787+37.91  
55.00'

FOR OLD R.O.W. SEE  
FILE 10, SHEET 59

PLAT FILE 508

10

73

FILE NAME Jobrow.gpk us24a.kk us24_astorfd_summom.m32	USER NAME = ROBERT STICKELMAIER	DESIGNED - PCF	REVISED -	<b>STATE OF ILLINOIS DEPARTMENT OF TRANSPORTATION</b>	<b>RIGHT OF WAY PLANS</b>			F.A. RTE.	SECTION	COUNTY	TOTAL SHEETS	SHEET NO.
	PLOT SCALE = 1"=100'	CHECKED - PCF	REVISED -		PROJECT 24.88703	JOB NO. R-94-008-93	317	(15,16,17)RS-1,(15BR)3(15YB)1	FULTON	240	86	
	PLOT DATE = 04-09-2009	DATE - 04-09-2009	REVISED -		SCALE: 1"=100'	SHEET NO. 5 OF 7 SHEETS	STA. 780+00.00 TO STA. 810+00.00	<b>CONTRACT NO. 88703</b>				
									FED. ROAD DIST. NO. ILLINOIS FED. AID PROJECT			